

03-09-12 LETTING ITEM 005

STATE OF ILLINOIS
DEPARTMENT OF TRANSPORTATION
DIVISION OF HIGHWAYS

**PROPOSED
HIGHWAY PLANS**

FAP 352 (ILLINOIS ROUTE 137)
SECTION 2011-023-1
18th STREET TO N OF MLK DRIVE/22nd STREET
PAVEMENT MARKING, MEDIAN BARRIER AND SIGNING

PROJECT : HSIP-0352(015)
LAKE COUNTY
C-91-491-11

F.A.P. RTE.	SECTION	COUNTY	TOTAL SHEETS	SHEET NO.
	2011-023-1	LAKE	15	1
		ILLINOIS	CONTRACT NO. 60P23	

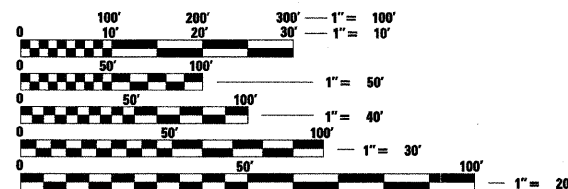
*15 + 1 = 16

FOR INDEX OF SHEETS, SEE SHEET NO. 2

TRAFFIC DATA

EXISTING ADT = 15,400 (2009)
SPEED LIMIT = 30 MPH

THE PROJECT IS LOCATED
WITHIN THE CITY OF NORTH CHICAGO

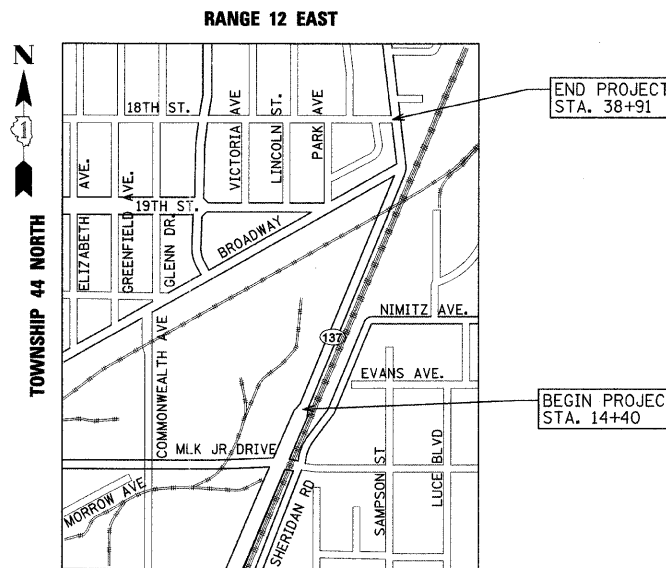


FULL SIZE PLANS HAVE BEEN PREPARED USING STANDARD ENGINEERING SCALES. REDUCED SIZED PLANS WILL NOT CONFORM TO STANDARD SCALES. IN MAKING MEASUREMENTS ON REDUCED PLANS, THE ABOVE SCALES MAY BE USED.

J.U.L.I.E.
JOINT UTILITY LOCATION INFORMATION FOR EXCAVATION
1-800-892-0123
OR 811

PROJECT ENGINEER: PETER JOHNSTON (GRAEF) 773-399-0112
PROJECT MANAGER: KEN ENG (IDOT) 847-705-4247

CONTRACT NO. 60P23



SHEILDS TOWNSHIP
GROSS LENGTH & NET LENGTH = 2,451 FT. (0.46 MILES)

PETER M. JOHNSTON
 062-047647
 STATE OF ILLINOIS
 Peter M. Johnston
 SIGNATURE
 11-8-11
 DATE

LICENSE EXPIRES 11-30-2013

STATE OF ILLINOIS
 DEPARTMENT OF TRANSPORTATION
 DIVISION OF HIGHWAYS
 SUBMITTED December 9, 2011
Diana M. O'Keefe
 DEPUTY DIRECTOR OF HIGHWAYS, REGION ENGINEER
February 3 2012
John D. Buannelli, P.E.
 acting ENGINEER OF DESIGN AND ENVIRONMENT
February 3 2012
William R. Flanagan
 acting DIRECTOR OF HIGHWAYS, CHIEF ENGINEER

PRINTED BY THE AUTHORITY
OF THE STATE OF ILLINOIS

GRAEF 8501 W. Higgins Road, Suite 30
Chicago, Illinois 60631
(773) 399-0112

INDEX OF SHEETS

SHEET NO.	DESCRIPTION
1	COVER SHEET
2	INDEX, HIGHWAY STANDARDS AND GENERAL NOTES
3	SUMMARY OF QUANTITIES
4	TYPICAL SECTIONS
5	SCHEDULE OF QUANTITIES
6	ALIGNMENT AND TIE
7	ROADWAY PLAN
8	PAVEMENT MARKING
9	ROADWAY SIGNING
10	CONCRETE BARRIER DETAIL
11	CONCRETE BARRIER TRANSITION GENERAL DETAILS AND CONCRETE BARRIER BASE (BD27)
12	RAISED REFLECTIVE PAVEMENT MARKERS (SNOW PLOW RESISTANT) (TC11)
13	DISTRICT ONE TYPICAL PAVEMENT MARKINGS (TC13)
14	PAVEMENT MARKINGS LETTERS AND SYMBOLS FOR TRAFFIC STAGING (TC16)
15	ARTERIAL ROAD INFORMATION SIGN (TC22)
15A	TRAFFIC CONTROL AND PROTECTION FOR SIDE ROADS, INTERSECTIONS, AND DRIVEWAYS

HIGHWAY STANDARDS

STD. NO.	TITLE
000001-06	STANDARD SYMBOLS, ABBREVIATIONS AND PATTERNS
637001-04	CONCRETE BARRIER, DOUBLE FACE, 32 in. HEIGHT
701101-02	OFF-ROAD OPERATIONS, MULTILANE, 15' (4.5 m) TO 24" (600 mm) FROM PAVEMENT EDGE
701601-07	URBAN LANE CLOSURE, MULTILANE, 1W OR 2W WITH NONTRAVERSABLE MEDIAN
701701-08	URBAN LANE CLOSURE, MULTILANE, INTERSECTION
701901-02	TRAFFIC CONTROL DEVICES
720001-01	SIGN PANEL MOUNTING DETAILS
720006-03	SIGN PANEL ERECTION DETAILS
731001-01	BASE FOR TELESCOPING STEEL SIGN SUPPORT
728001-01	TELESCOPING STEEL SIGN SUPPORT

GENERAL NOTES

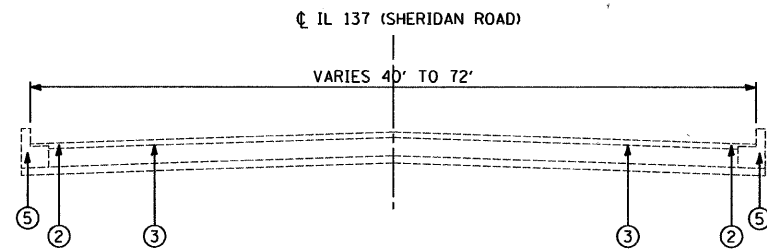
- BEFORE STARTING ANY EXCAVATION, THE CONTRACTOR SHALL CALL "J.U.L.I.E." AT 800-892-0123 OR "CUAN" (CHICAGO UTILITY ALERT NETWORK), 312-744-7000 FOR FIELD LOCATIONS OF BURIED ELECTRIC, TELEPHONE AND GAS FACILITIES (48 HOUR NOTIFICATION IS REQUIRED).
- THE CONTRACTOR SHALL COORDINATE CONSTRUCTION ACTIVITIES WITH UTILITY COMPANIES AND LOCAL AGENCIES.
- THE CONTRACTOR WILL NOT BE ALLOWED TO SET UP A YARD OR FIELD OFFICE ON STATE PROPERTY WITHOUT WRITTEN PERMISSION FROM THE DEPARTMENT.
- THE RESIDENT ENGINEER SHALL CONTACT THE TRAFFIC CONTROL SUPERVISOR AT (847) 705-4470 A MINIMUM 72 HOURS PRIOR TO THE PLACEMENT OF ANY TEMPORARY TRAFFIC CONTROL DEVICES.
- FOR PAVEMENT MARKING AND RAISED REFLECTIVE PAVEMENT MARKERS, REFER TO DISTRICT ONE TYPICAL MARKINGS FOR DETAILS NOT SHOWN.
- MATCH EXISTING PAVEMENT MARKINGS AT PROJECT LIMITS.
- THE RESIDENT ENGINEER SHALL CONTACT DEBBIE HANLON, AREA TRAFFIC FIELD ENGINEER, AT 847-438-2300 AT LEAST (2) WEEKS PRIOR TO PLACING PERMANENT PAVEMENT MARKINGS.
- BEFORE BEGINNING ANY WORK, THE CONTRACTOR SHALL RETAIN AND RECORD FOR FUTURE REFERENCE, ALL EXISTING PAVEMENT MARKING LINES (AND RAISED REFLECTIVE MARKINGS) IN ORDER THAT THESE LOCATIONS CAN BE REESTABLISHED FOR STRIPING. EXACT LOCATIONS OF ALL PAVEMENT MARKINGS SHALL BE AS DIRECTED BY THE ENGINEER.
- FOR WORK OUTSIDE THE LIMITS OF BRIDGE APPROACH PAVEMENT, ALL REFERENCES IN THE HIGHWAY STANDARDS AND STANDARD SPECIFICATIONS FOR REINFORCEMENT, DOWEL BARS AND TIE BARS IN PAVEMENT, SHOULDERS, CURB, GUTTER, COMBINATION CURB AND GUTTER AND MEDIAN, AND CHAIR SUPPORTS FOR CRC PAVEMENT, SHALL BE EPOXY COATED, UNLESS NOTED ON THE PLAN

SUMMARY OF QUANTITIES

90% FED.
10% STATE

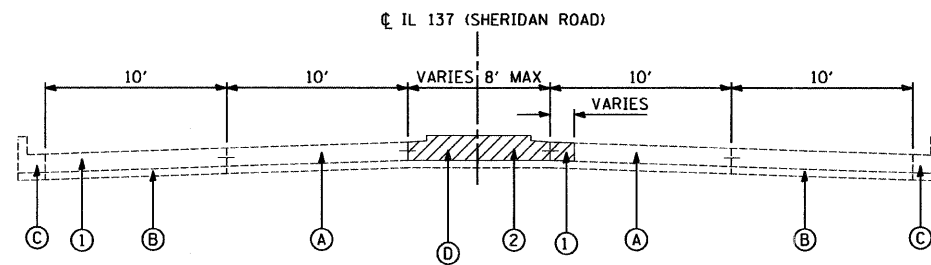
PAY ITEM NUMBER	DESCRIPTION	UNIT	URBAN TOTAL QUANTITY	0021 SAFETY
31101200	SUBBASE GRANULAR MATERIAL, TYPE B 4"	SQ YD	137	137
42000400	PORTLAND CEMENT CONCRETE PAVEMENT 9"	SQ YD	55	55
42001300	PROTECTIVE COAT	SQ YD	315	315
44000100	PAVEMENT REMOVAL	SQ YD	9	9
44003100	MEDIAN REMOVAL	SQ FT	1,762	1,762
60618320	CONCRETE MEDIAN SURFACE, 6 INCH	SQ FT	628	628
63700153	CONCRETE BARRIER, VARIABLE CROSS-SECTION, 32" HEIGHT	FOOT	35	35
63700155	CONCRETE BARRIER, SINGLE FACE, 32 INCH HEIGHT	FOOT	384	384
63700900	CONCRETE BARRIER BASE	FOOT	419	419
67000400	ENGINEER'S FIELD OFFICE, TYPE A	CAL MO	6	6
67100100	MOBILIZATION	L SUM	1	1
70102630	TRAFFIC CONTROL AND PROTECTION, STANDARD 701601	L SUM	1	1
70102635	TRAFFIC CONTROL AND PROTECTION, STANDARD 701701	L SUM	1	1
* 72000100	SIGN PANEL - TYPE 1	SQ FT	168	168
* 72400100	REMOVE SIGN PANEL ASSEMBLY - TYPE A	EACH	12	12
* 72400310	REMOVE SIGN PANEL - TYPE 1	SQ FT	67	67
* 72800100	TELESCOPING STEEL SIGN SUPPORT	FOOT	200	200
* 78000100	THERMOPLASTIC PAVEMENT MARKING - LETTERS AND SYMBOLS	SQ FT	73	73
* 78000200	THERMOPLASTIC PAVEMENT MARKING - LINE 4"	FOOT	4,692	4,692
* 78000400	THERMOPLASTIC PAVEMENT MARKING - LINE 6"	FOOT	405	405
* 78000600	THERMOPLASTIC PAVEMENT MARKING - LINE 12"	FOOT	237	237
* 78000650	THERMOPLASTIC PAVEMENT MARKING - LINE 24"	FOOT	23	23
* 78008310	POLYUREA PAVEMENT MARKING TYPE II - LINE 4"	FOOT	1,824	1,824
* 78008350	POLYUREA PAVEMENT MARKING TYPE II - LINE 12"	FOOT	83	83
* 78100100	RAISED REFLECTIVE PAVEMENT MARKER	EACH	107	107
78200520	BARRIER WALL MARKERS, TYPE B	EACH	12	12
78300200	RAISED REFLECTIVE PAVEMENT MARKER REMOVAL	EACH	132	132
78300100	PAVEMENT MARKING REMOVAL	SQ FT	1,287	1,287
Z0013798	CONSTRUCTION LAYOUT	L SUM	1	1
64300240	IMPACT ATTENUATORS (FULLY REDIRECTIVE, NARROW), TEST LEVEL 2	EACH	2	2
Z0030850	TEMPORARY INFORMATION SIGNING	SQ FT	77	77
Z0048665	RAILROAD PROTECTIVE LIABILITY INSURANCE	L SUM	1	1

* DENOTES SPECIALTY ITEM



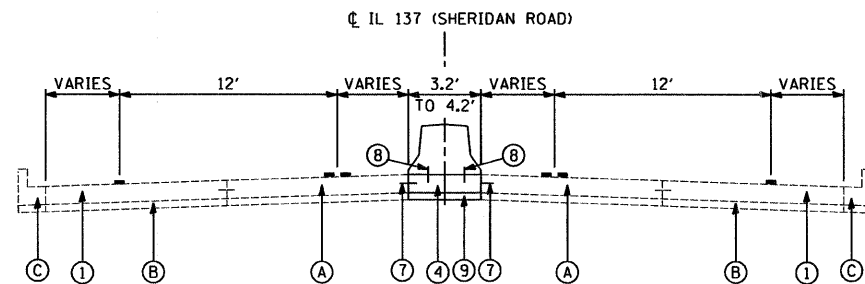
EXISTING TYPICAL SECTION

STA. 26+20 TO STA. 30+42
STA. 33+46 TO STA. 39+14



EXISTING TYPICAL SECTION

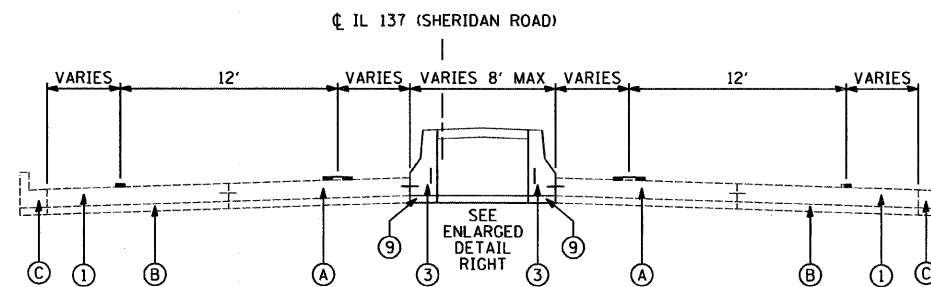
STA. 30+42 TO STA. 33+46



PROPOSED TYPICAL SECTION

STA. 30+21.2 TO STA. 30+48
STA. 32+40 TO STA. 32+48.4

NOTE:
FROM STA. 30+21.2 TO STA. 30+48
THE PAVEMENT HAS A HOT-
MIX ASPHALT OVERLAY



PROPOSED TYPICAL SECTION

STA. 30+42 TO STA. 32+46

EXISTING CONDITIONS:

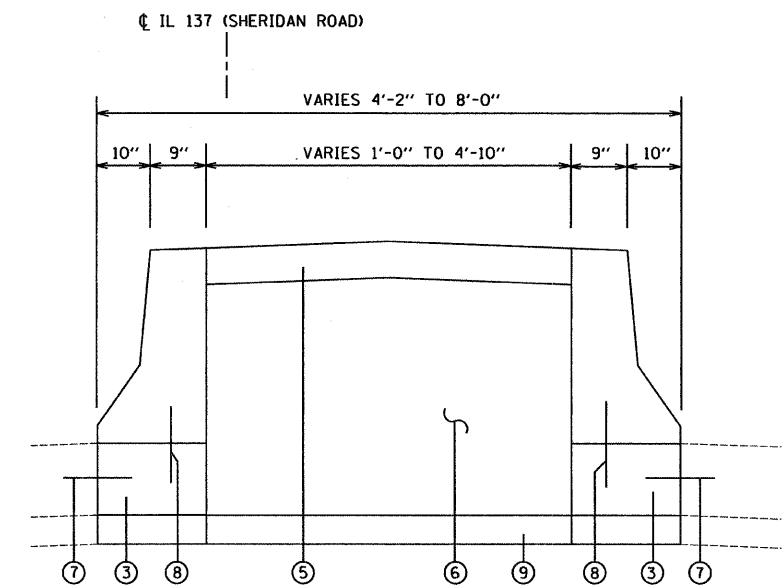
- (A) PCC PAVEMENT, 10"
- (B) STABILIZED SUB-BASE, 4"
- (C) COMBINATION CONCRETE CURB AND GUTTER, TYPE B-6.12
- (D) CONCRETE MEDIAN
- (E) COMBINATION CONCRETE CURB AND GUTTER, TYPE B-6.12

/// ITEMS TO BE REMOVED

PROPOSED IMPROVEMENTS:

- (1) PAVEMENT REMOVAL
- (2) MEDIAN REMOVAL
- (3) CONCRETE BARRIER BASE, AND CONCRETE BARRIER, SINGLE FACE, 32" HEIGHT
- (4) CONCRETE BARRIER BASE AND CONCRETE BARRIER, VARIABLE CROSS SECTION 32" HEIGHT
- (5) CONCRETE MEDIAN SURFACE, 6"
- (6) SAND BACKFILL. COST INCLUDED IN THE PAY ITEM CONCRETE MEDIAN SURFACE, 6"
- (7) EPOXY COATED, DEFORMED NO. 6 TIE BARS, 24" LONG @ 24" C-C. COST INCLUDED IN THE PAY ITEM CONCRETE BARRIER BASE
- (8) EPOXY COATED, DEFORMED NO. 6 TIE BARS, 12" LONG @ 30" C-C. COST INCLUDED IN THE PAY ITEM CONCRETE BARRIER BASE.
- (9) SUBBASE GRANULAR MATERIAL, TYPE B 4"
- PAVEMENT MARKING

REFER TO DISTRICT ONE " CONCRETE BARRIER TRANSITION & GENERAL DETAILS, CONCRETE BARRIER BASE" FOR ADDITIONAL INFORMATION NOT SHOWN HERE.



ENLARGED MEDIAN DETAIL

STA. 30+42 TO STA. 32+46

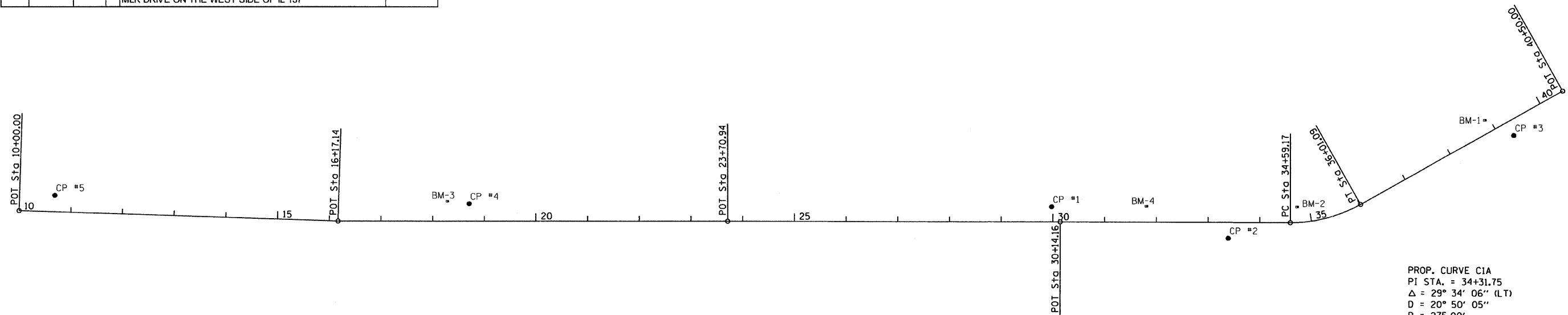
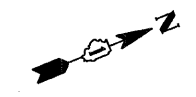
FILE NAME =	USER NAME = .USER.	DESIGNED - SRC	REVISED -	STATE OF ILLINOIS DEPARTMENT OF TRANSPORTATION	IL 137 - 18th STREET TO MARTIN LUTHER KING DRIVE TYPICAL SECTION	F.A.P. RTE.	SECTION	COUNTY	TOTAL SHEETS	SHEET NO.	
#FILEL*	PLOT SCALE = 50.0000' / IN.	DRAWN - SRC	REVISED -			352	2011-023-1	LAKE	15	4	
	PLOT DATE = 12/12/2011	CHECKED - RS	REVISED -			CONTRACT NO. 60P23					
		DATE - 12-12-2011	REVISED -			ILLINOIS FED. AID PROJECT					
					SCALE: 50	SHEET NO. 1 OF 1 SHEETS		STA.	TO STA.		

SCHEDULE OF QUANTITIES

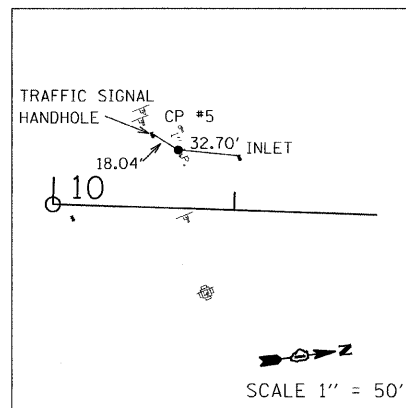
STATION	OFFSET		SIGN PANEL ASSEMBLY REMOVAL (EACH)	REMOVE SIGN PANEL - TYPE 1 (SQ FT)	Sign	SIGN ID #	SIZE (inches)	SIGN PANEL TYPE 1 (SQ.FT.)	TELESCOPING STEEL SIGN SUPPORT (FT.)
38+43	25.11	LT		7.50	SPEED LIMIT 30	R2-1	30x36	7.50	
36+98	25.09	LT		6.25	HORIZONTAL ALIGNMENT	W1-1	30x30	6.25	
				2.25	ADVISORY SPEED (25)	W13-1P	18x18	2.25	
				1.50	PARKING RESTRICTIONS	R7-1	12x18	1.50	
36+36	27.91	LT	1		CENTER PIER	W5-1(MODIFIED)	36x36	9.00	16.25
36+00	27.60	LT			MANDATORY MOVEMENT LANE CONTROL	R3-5R	30x36	7.50	15
35+76	28.85	RT	1		TWO-DIRECTION LARGE ARROW	W1-7	48x24	8.00	16
					CHEVRON LEFT	W1-8L	18x24	3.00	
					CHEVRON RIGHT	W1-8R	18x24	3.00	
35+00	30.21	RT	1		CHEVRON LEFT	W1-8L	18x24	3.00	16
					CHEVRON RIGHT	W1-8R	18x24	3.00	
34+64	28.84	RT	1		CHEVRON LEFT	W1-8L	18x24	3.00	16
					CHEVRON RIGHT	W1-8R	18x24	3.00	
34+30	28.70	RT	1		CHEVRON LEFT	W1-8L	18x24	3.00	14
					CHEVRON RIGHT	W1-8R	18x24	3.00	
33+67	29.69	RT	1		CHEVRON RIGHT	W1-8R	18x24	3.00	14
					LANE ENDS	W4-2R			
34+89	118.68	LT	1		SPEED LIMIT 25	R2-1	30x36	7.50	15
34+73	72.21	LT	1		STOP	R1-1	30x30	6.25	14.5
34+61	25.87	LT	1		LOW CLEARANCE (WITH ARROWS)- 13'-11"	W12-2	36x36	9.00	16.25
32+67	1.95	RT	1		KEEP RIGHT	R4-7	24x30		
30+95	2.10	RT	1		KEEP RIGHT	R4-7	24x30		
31+52	30.48	RT		6.25	HORIZONTAL ALIGNMENT	W1-1	30x30	6.25	
				2.25	ADVISORY SPEED (25)	W13-1P	18x18	2.25	
29+67	22.28	RT		9.00	CENTER PIER	W5-1(MODIFIED)	36x36	9.00	
38+43	25.11	LT		7.50	SPEED LIMIT 30	R2-1	30x36	7.50	
25+64	30.10	RT		9.00	LOW CLEARANCE (WITH ARROWS)- 13'-9"	W12-2	36x36	9.00	
27+22	29.86	RT		7.50	SPEED LIMIT 30	R2-1	30x36	7.50	
24+40	27.70	RT			LANE ENDS	W4-2L	36x36	9.00	16.25
19+80	28.20	RT			LEFT LANE ENDS	W9-1L	36x36	9.00	16.25
10+73	4.68	RT	1		MOVEMENT PROHIBITION	R3-2	24x24	4.00	14.5
					KEEP RIGHT	R4-7	24x30	5.00	
15+59	39.75	LT		7.50	SPEED LIMIT 30	R2-1	30x36	7.50	

BENCH MARKS

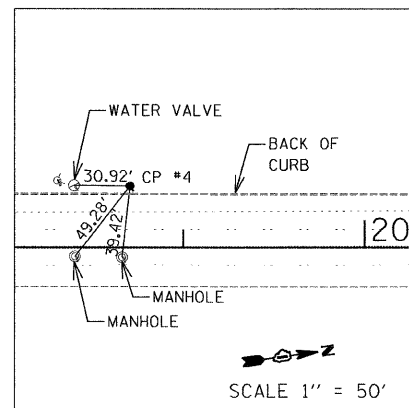
BM #	LOCATION		DESCRIPTION	ELEVATION
	STATION	OFFSET		
1	38+83.0	29.7' LT	CUT CROSS IN TOP SOUTHEAST BOLT IN BASE FOR TRAFFIC SIGNAL WITH MAST ARM AT THE SOUTHWEST CORNER OF IL 137 AND 18TH STREET	663.57
2	34+72.3	29.7' LT	CUT CROSS IN SOUTHWEST FLANGE BOLTON FIRE HYDRANT IN THE SOUTHWEST CORNER OF IL 137 AND BROADWAY	662.40
3	31+80.9	30.8' LT	CUT SQUARE AT THE NORTHEAST CORNER OF CONCRETE WALL AT THE NORTHWEST CORNER OF BRIDGE	661.29
4	18+30.6	37.2' LT	CUT CROSS IN FLANGE BOLT OF 2ND HYDRANT NORTH OF MLK DRIVE ON THE WEST SIDE OF IL 137	651.68



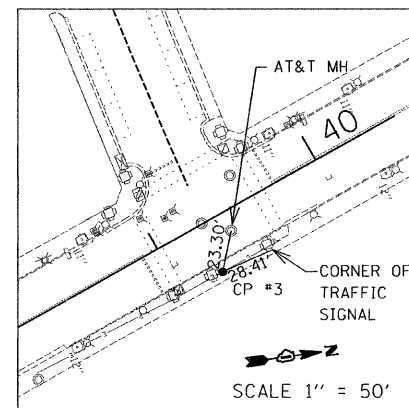
PROP. CURVE CIA
 PI STA. = 34+31.75
 Δ = 29° 34' 06" (LT)
 D = 20° 50' 05"
 R = 275.00'
 T = 72.58'
 L = 141.92'
 E = 9.42'
 e = -----
 T.R. = -----
 S.E. RUN = -----
 P.C. STA = 33+59.17
 P.T. STA = 35+01.09



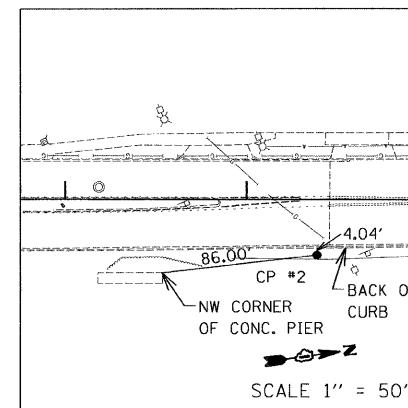
CONTROL POINT #5
 SET PK NAIL IN ASPHALT WALK
 STATION 10+68.12, 32.21' LT.
 N 2,059,424.20
 E 1,116,903.28
 ELEVATION: 650.39'



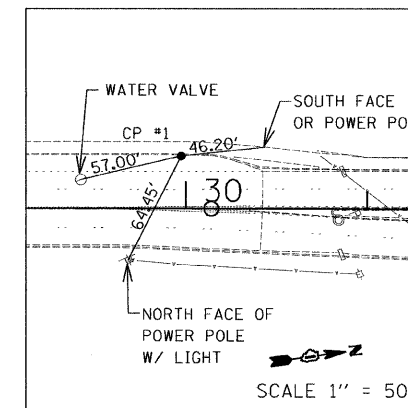
CONTROL POINT #4
 SET PK NAIL IN ASPHALT WALK
 STATION 18+70.64, 33.82' LT.
 N 2,060,159.25
 E 1,117,222.44
 ELEVATION: 649.66'



CONTROL POINT #3
 CHISELED 'X' IN CONCRETE WALK
 STATION 39+25.08, 28.70' RT.
 N 2,062,078.99
 E 1,117,866.89
 ELEVATION: 664.13'



CONTROL POINT #2
 SET REBAR IN GRASS ON EAST
 STATION 33+39.10, 30.60' RT.
 N 2,061,492.20
 E 1,117,841.99
 ELEVATION: 658.50'



CONTROL POINT #1
 SET PK NAIL IN ASPHALT SHOULDER
 STATION 29+97.57, 29.14' LT.
 N 2,061,199.45
 E 1,117,656.22
 ELEVATION: 656.24'

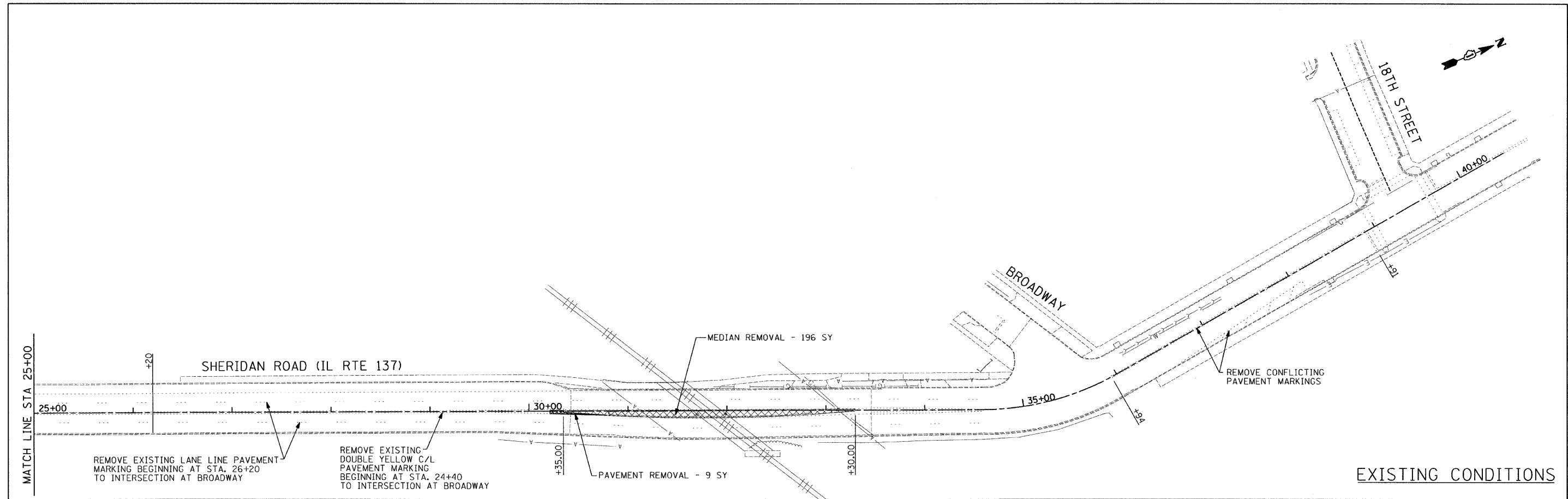
FILE NAME =	USER NAME = .USER.	DESIGNED - SRC	REVISED -
#FILE#		DRAWN - SRC	REVISED -
	PLOT SCALE = 100.0000' / IN.	CHECKED - RS	REVISED -
	PLOT DATE = 12/12/2011	DATE - 12-12-2011	REVISED -

STATE OF ILLINOIS
 DEPARTMENT OF TRANSPORTATION

IL 137 - 18th STREET TO MARTIN LUTHER KING DRIVE
 ALIGNMENT AND TIE

SCALE: 100 SHEET NO. 1 OF 1 SHEETS STA. TO STA.

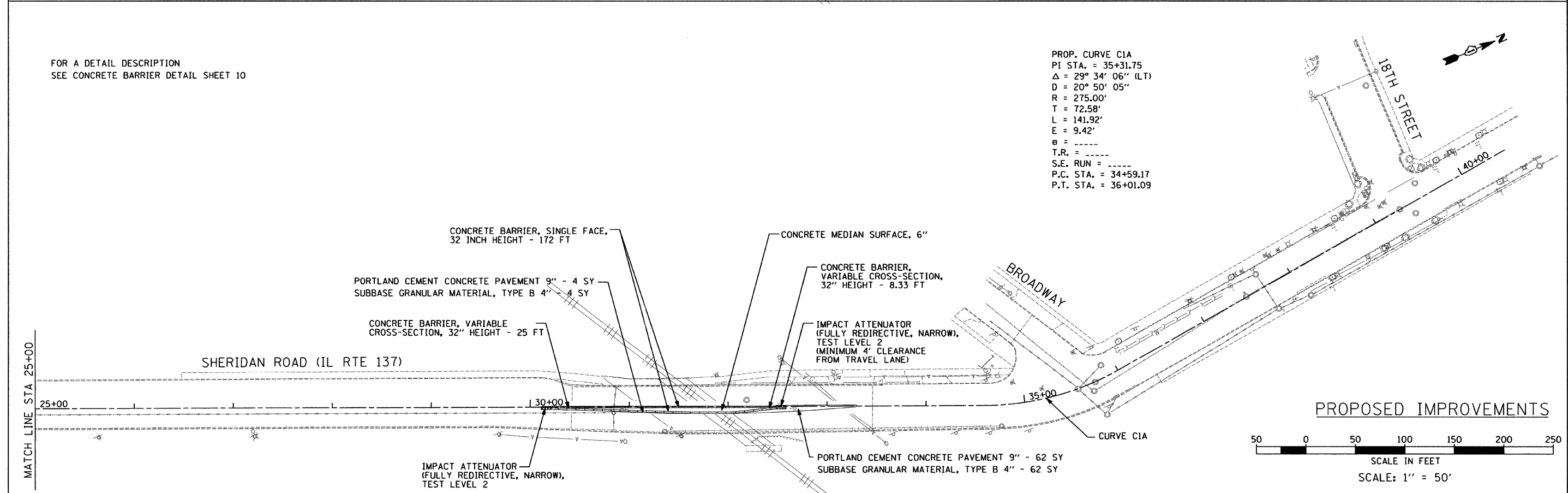
F.A.P. RTE.	SECTION	COUNTY	TOTAL SHEETS	SHEET NO.
352	2011-023-I	LAKE	15	6
CONTRACT NO. 60P23			ILLINOIS FED. AID PROJECT	



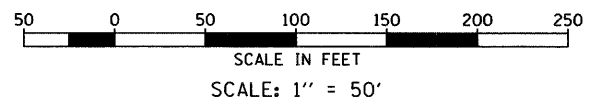
EXISTING CONDITIONS

FOR A DETAIL DESCRIPTION
SEE CONCRETE BARRIER DETAIL SHEET 10

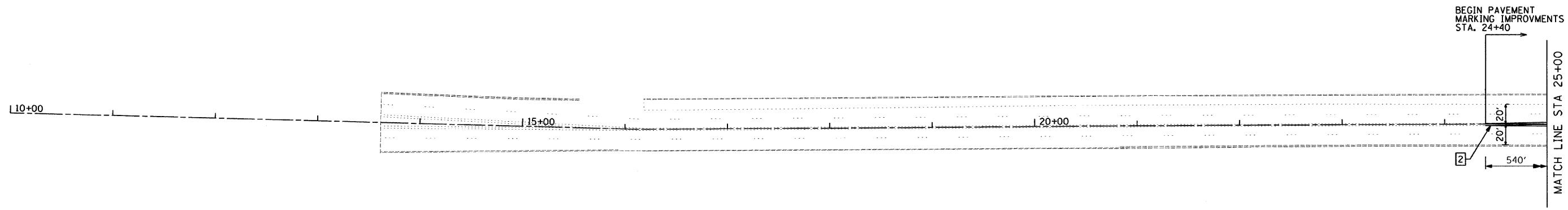
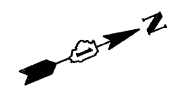
PROP. CURVE CIA
 PI STA. = 35+31.75
 $\Delta = 29^\circ 34' 06''$ (LT)
 $D = 20^\circ 50' 05''$
 $R = 275.00'$
 $T = 72.58'$
 $L = 141.92'$
 $E = 9.42'$
 $\theta = \text{---}$
 $T.R. = \text{---}$
 $S.E. \text{ RUN} = \text{---}$
 $P.C. \text{ STA.} = 34+59.17$
 $P.T. \text{ STA.} = 36+01.09$



PROPOSED IMPROVEMENTS



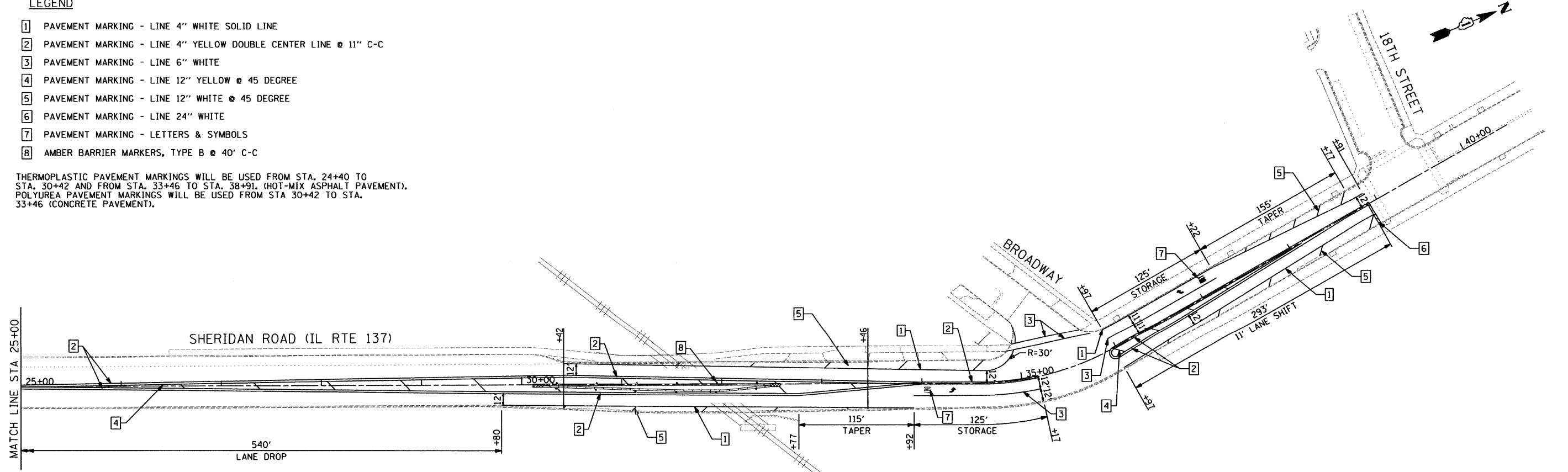
FILE NAME =	USER NAME = .USER.	DESIGNED - SRC	REVISED -	STATE OF ILLINOIS DEPARTMENT OF TRANSPORTATION	IL 137 - 18th STREET TO MARTIN LUTHER KING DRIVE EXISTING & PROPOSED CONDITIONS	F.A.P. RTE.	SECTION	COUNTY	TOTAL SHEETS	SHEET NO.	
#FILEL*	PLOT SCALE = 50.0000' / IN.	DRAWN - SRC	REVISED -			352	2011-023-I	LAKE	15	7	
	PLOT DATE = 12/12/2011	CHECKED - RS	REVISED -			CONTRACT NO. 60P23					
		DATE - 12-12-2011	REVISED -			ILLINOIS FED. AID PROJECT					
					SCALE: 50	SHEET NO. 1 OF 1 SHEETS		STA.	TO STA.		



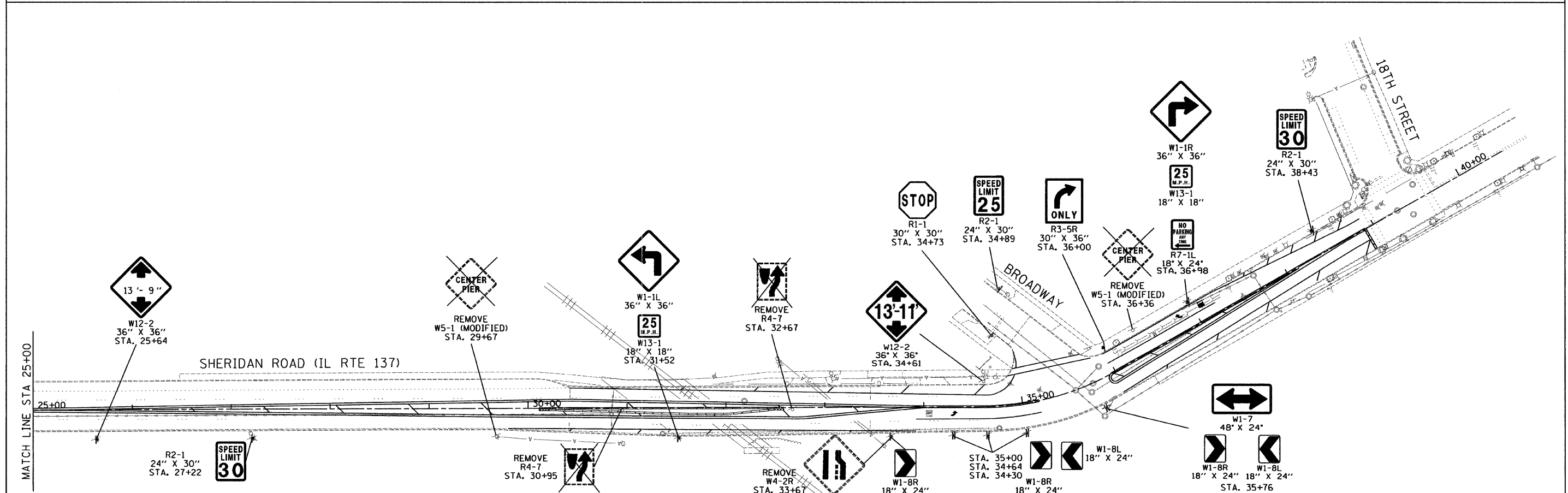
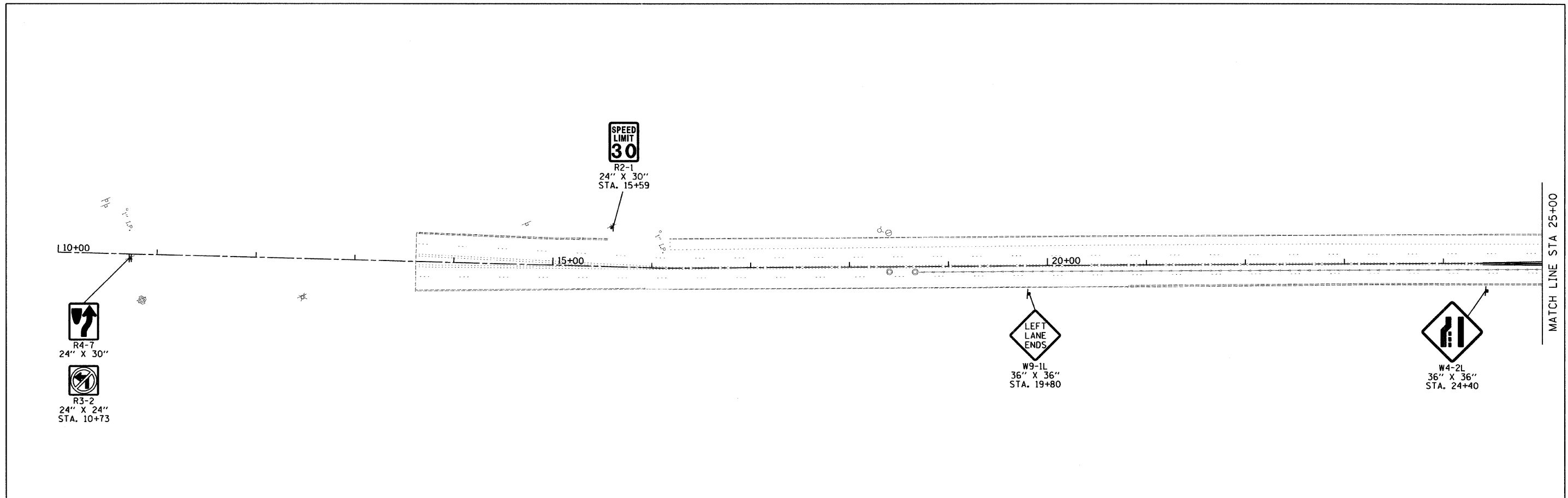
LEGEND

- 1 PAVEMENT MARKING - LINE 4" WHITE SOLID LINE
- 2 PAVEMENT MARKING - LINE 4" YELLOW DOUBLE CENTER LINE @ 11" C-C
- 3 PAVEMENT MARKING - LINE 6" WHITE
- 4 PAVEMENT MARKING - LINE 12" YELLOW @ 45 DEGREE
- 5 PAVEMENT MARKING - LINE 12" WHITE @ 45 DEGREE
- 6 PAVEMENT MARKING - LINE 24" WHITE
- 7 PAVEMENT MARKING - LETTERS & SYMBOLS
- 8 AMBER BARRIER MARKERS, TYPE B @ 40' C-C

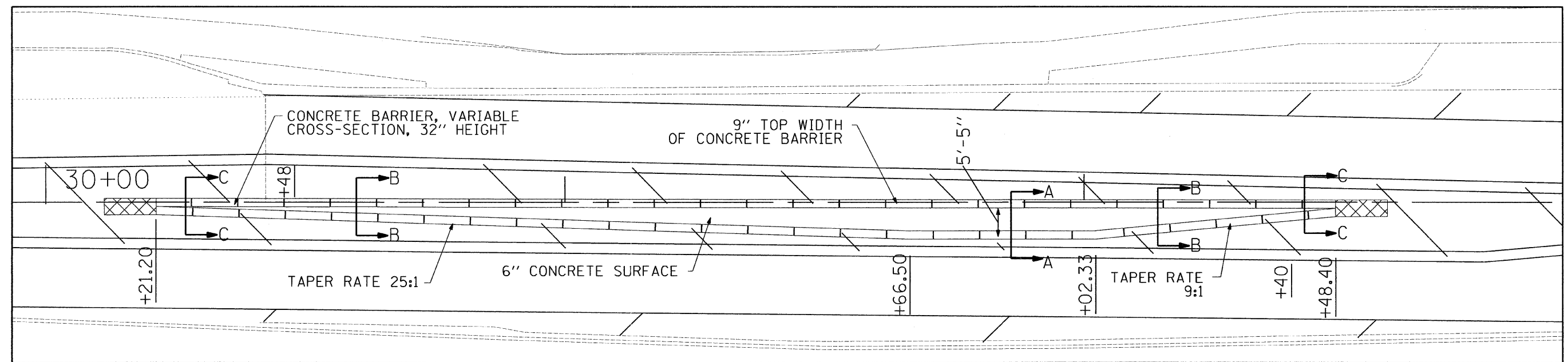
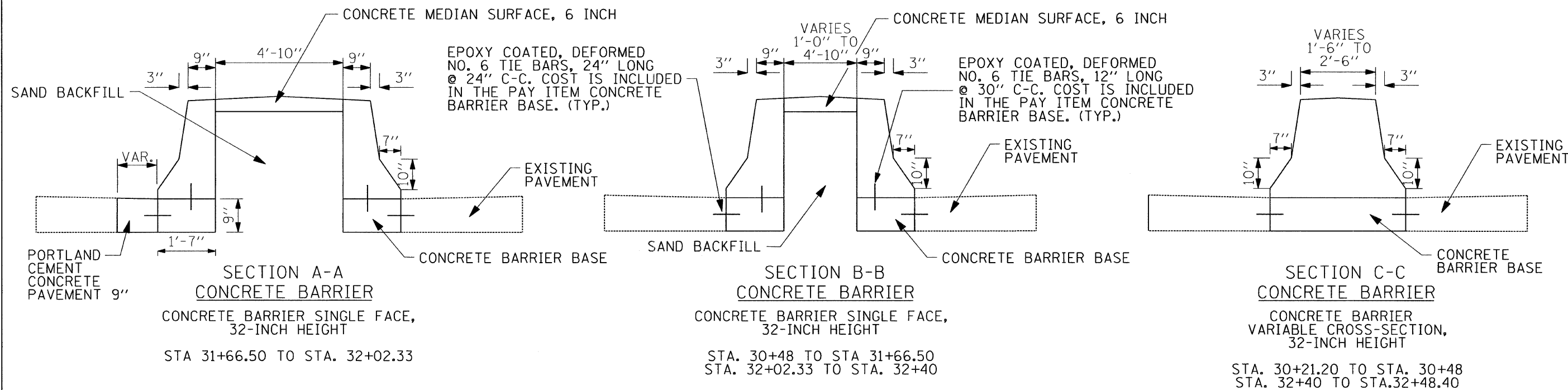
THERMOPLASTIC PAVEMENT MARKINGS WILL BE USED FROM STA. 24+40 TO STA. 30+42 AND FROM STA. 33+46 TO STA. 38+91. (HOT-MIX ASPHALT PAVEMENT). POLYUREA PAVEMENT MARKINGS WILL BE USED FROM STA. 30+42 TO STA. 33+46 (CONCRETE PAVEMENT).



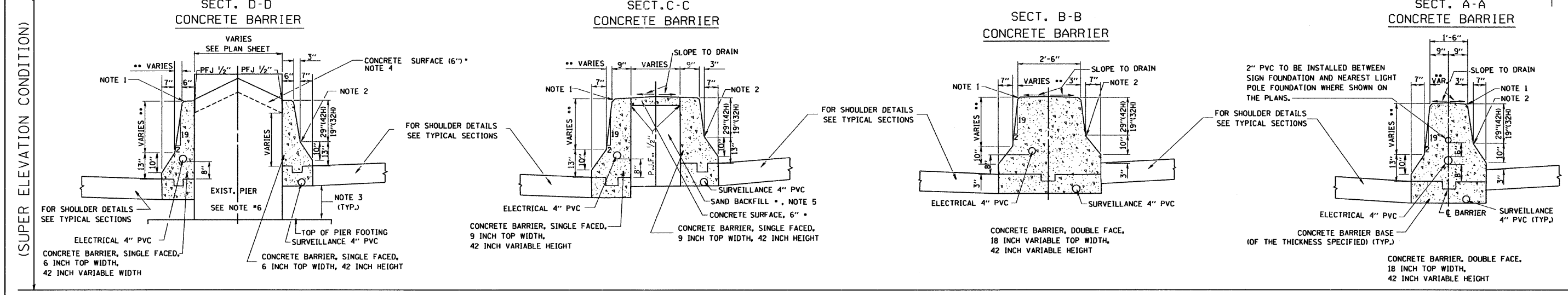
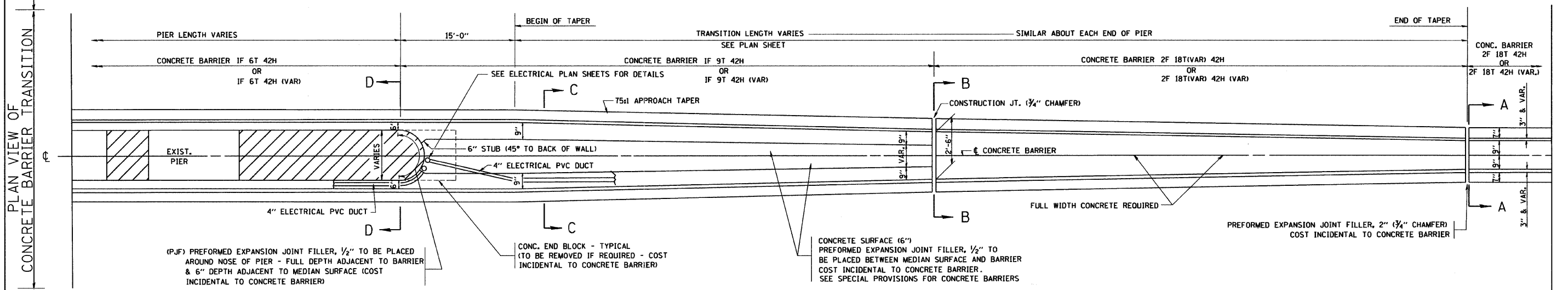
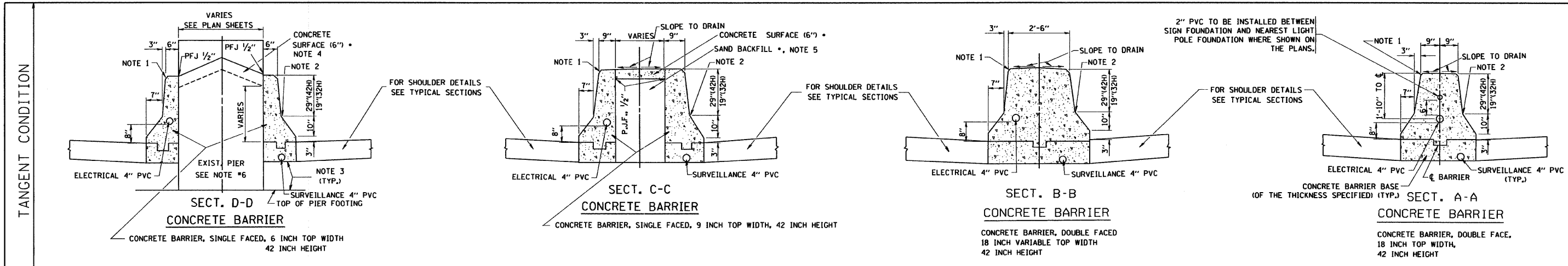
FILE NAME = #FILE#	USER NAME = .USER.	DESIGNED - SRC	REVISED -	STATE OF ILLINOIS DEPARTMENT OF TRANSPORTATION	IL 137 - 18th STREET TO MARTIN LUTHER KING DRIVE PAVEMENT MARKING PLAN	F.A.P. RTE. 352	SECTION 2011-023-1	COUNTY LAKE	TOTAL SHEETS 15	SHEET NO. 8	
PLOT SCALE = 50,0000' / IN.	CHECKED - RS	DATE - 12-12-2011	REVISED -			SCALE: 50	SHEET NO. 1 OF 1 SHEETS	STA. TO STA.	CONTRACT NO. 60P23		
PLOT DATE = 12/13/2011	DATE - 12-12-2011	REVISED -	REVISED -			ILLINOIS FED. AID PROJECT					



FILE NAME = *FILEL*	USER NAME = .USER.	DESIGNED - SRC	REVISED -	STATE OF ILLINOIS DEPARTMENT OF TRANSPORTATION	IL 137 - 18th STREET TO MARTIN LUTHER KING DRIVE SIGNING PLAN	F.A.P. RTE.	SECTION	COUNTY	TOTAL SHEETS	SHEET NO.	
	PLOT SCALE = 50.0000' / IN.	DRAWN - SRC	REVISED -			352	2011-023-1	LAKE	15	9	
	PLOT DATE = 12/13/2011	CHECKED - RS	REVISED -			CONTRACT NO. 60P23					
		DATE - 12-12-2011	REVISED -			ILLINOIS FED. AID PROJECT					



FILE NAME =	USER NAME = .USER.	DESIGNED - SRC	REVISED -	STATE OF ILLINOIS DEPARTMENT OF TRANSPORTATION	IL 137 - 18th STREET TO MARTIN LUTHER KING DRIVE CONCRETE BARRIER DETAIL	F.A.P. RTE.	SECTION	COUNTY	TOTAL SHEETS	SHEET NO.	
*FILE#		DRAWN - SRC	REVISED -			352	2011-023-1	LAKE	15	10	
	PLOT SCALE = 50.0000' / IN.	CHECKED - RS	REVISED -			CONTRACT NO. 60P23					
	PLOT DATE = 12/12/2011	DATE - 12-12-2011	REVISED -			ILLINOIS FED. AID PROJECT					
				SCALE: 50		SHEET NO. 1 OF 1 SHEETS		STA.		TO STA.	



GENERAL NOTES - FOR UNDERDRAIN DETAILS SEE TYPICAL SECTIONS

- PREFORMED JOINT FILLER SHALL BE INCIDENTAL TO THE CONCRETE BARRIER OF THE TYPE INVOLVED.
- FOR KEYWAY (K) DIMENSIONS, SEE TYPICAL SECTIONS
- CONCRETE BARRIER BASE PAY ITEM IS TO BE INCLUDED IF THE BARRIER IS CONSTRUCTED MONOLITHIC OR JOINTED TO BASE. IF JOINTED CONTRACTORS WILL HAVE THE OPTION OF USING A KEYWAY OR TIE BARS AT O.C.

NOTE 1 - 3/4" CHAMFER OR 1" RADIUS (OPTIONAL)

NOTE 2 - 10" RADIUS (OPTIONAL)

NOTE 3 - EXTEND BOTTOM OF BARRIER TO FOOTING ONLY WHEN DEPTH IS 6" OR LESS, OTHERWISE MAINTAIN SAME DEPTH AS BOTTOM OF SHOULDER

NOTE 4 - PIER FILLER MATERIAL TO BE CONCRETE IF MINIMUM 6" THICKNESS WILL BE MAINTAINED. IF 6" THICKNESS CANNOT BE MAINTAINED USE ASPHALT FILLER MATERIAL AS DIRECTED BY THE ENGINEER.

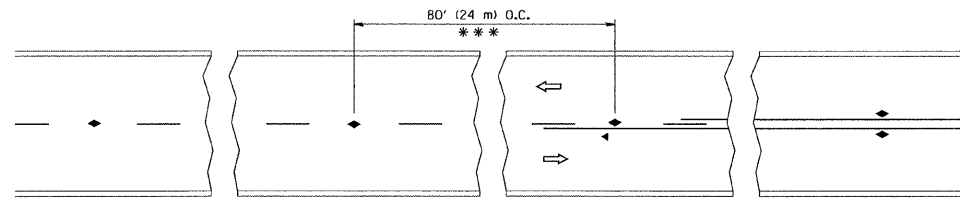
NOTE 5 - SAND BACKFILL AND CONCRETE SURFACE WILL BE REQUIRED. FILLING WITH CONCRETE WILL NOT BE ALLOWED.

NOTE 6 - IF PIER IS NEW CONSTRUCTION BARRIER WALL MAY BE MONOLITHIC

**** MAINTAIN SLOPE OF FACE AS SHOWN ON DETAIL. HEIGHT AND WIDTH OF BARRIER INCREASE WHERE A DIFFERENCE IN MEDIAN EDGE-OF-PAVEMENT GRADE ELEVATION EXISTS.**

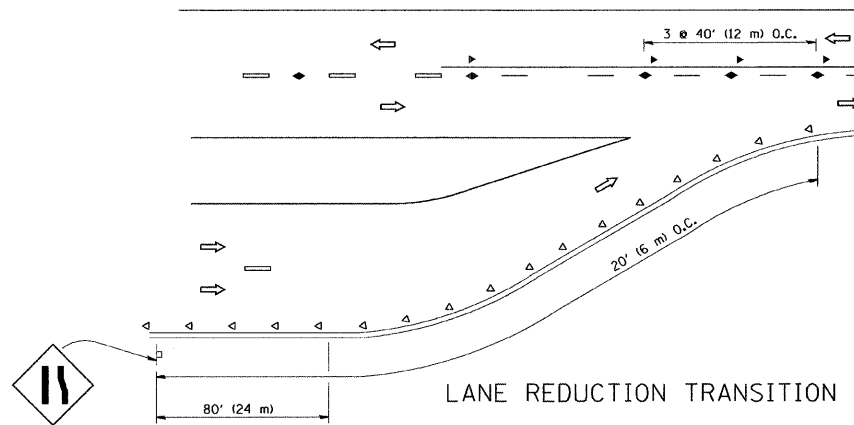
*** COST OF SAND BACKFILL, CONCRETE SURFACE (6"), AND PIER FILLER MATERIAL WILL NOT BE INCIDENTAL.**

FILE NAME = W:\diststd\22\34\bd27.dgn	USER NAME = geglianob	DESIGNED - FORD	REVISED - FORD 12-06-88	STATE OF ILLINOIS DEPARTMENT OF TRANSPORTATION	CONCRETE BARRIER TRANSITION & GENERAL DETAILS, CONCRETE BARRIER BASE		F.A.P. RTE. 352	SECTION 2011-023-1	COUNTY LAKE	TOTAL SHEETS 15	SHEET NO. 11
PLOT SCALE = 5/8" = 1' IN.	DRAWN -	CHECKED -	REVISED -		SCALE: NONE	SHEET NO. 1 OF 1 SHEETS	STA. TO STA.	BD-27		CONTRACT NO. 60P23	
PLOT DATE = 1/4/2008	DATE - 09-09-88	REVISI	REVISI				FED. ROAD DIST. NO. 1 (ILLINOIS) FED. AID PROJECT				

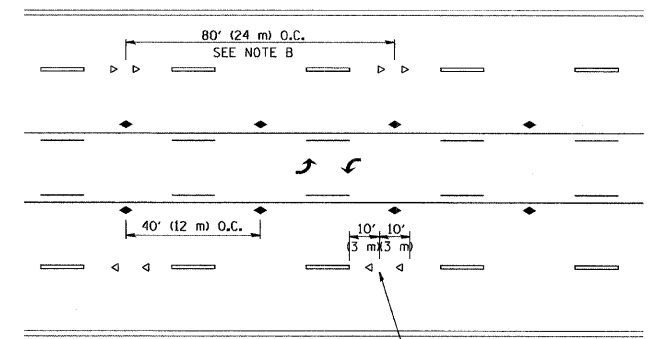


*** REDUCE TO 40' (12 m) O.C. ON CURVES WITH POSTED OR ADVISORY SPEED 45 M.P.H. (70 km/h) OR LESS.

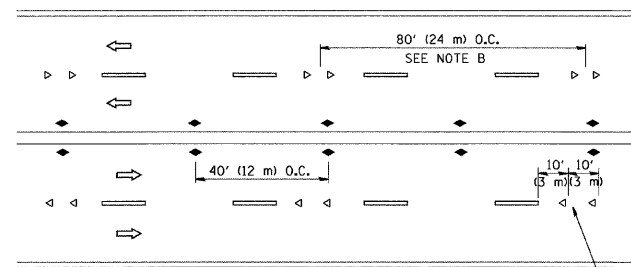
TWO-LANE/TWO-WAY



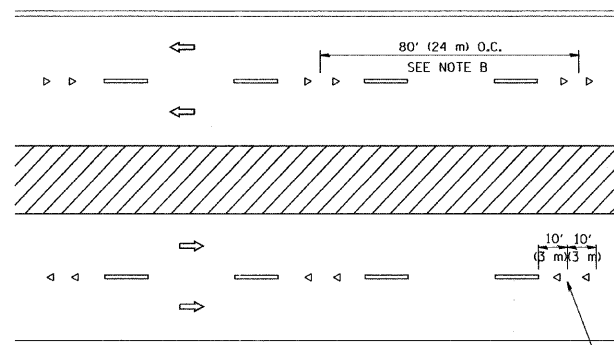
LANE REDUCTION TRANSITION



TWO-WAY LEFT TURN



MULTI-LANE/UNDIVIDED



MULTI-LANE/DIVIDED

GENERAL NOTES

1. MARKERS USED WITH DASHED LINES SHALL BE CENTERED IN THE GAP BETWEEN SEGMENTS.
2. MARKERS USED ADJACENT TO SOLID LINES SHALL BE OFFSET 2 TO 3 (50 TO 75) TOWARD TRAFFIC AS SHOWN.
3. MARKERS THROUGH TANGENTS LESS THAN 500' (150 m) IN LENGTH BETWEEN CURVES SHALL BE INSTALLED AT THE LESSER OF THE TWO CURVE SPACINGS.

SYMBOLS

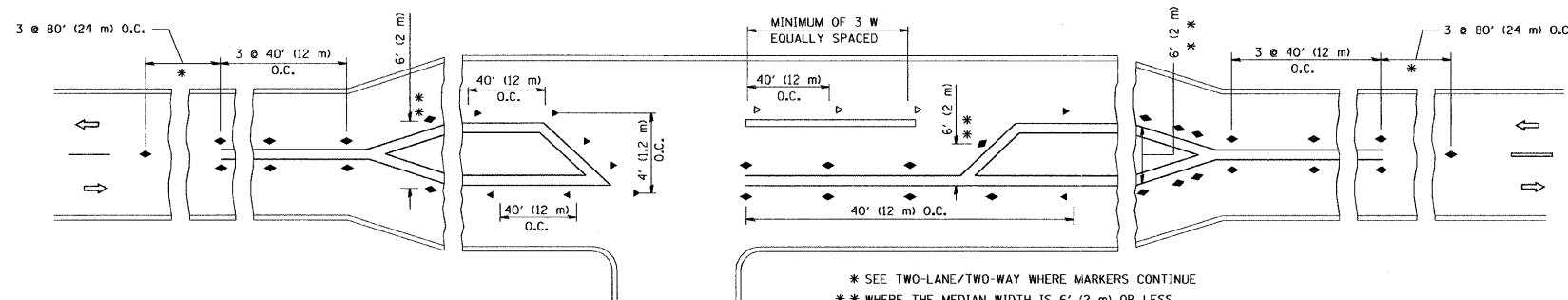
- YELLOW STRIPE
- WHITE STRIPE
- ◀ ONE-WAY AMBER MARKER
- ◁ ONE-WAY CRYSTAL MARKER (W/O)
- ◆ TWO-WAY AMBER MARKER

LANE MARKER NOTES

- A. USE DOUBLE LANE LINE MARKERS SPACED AS SHOWN.
- B. REDUCE TO 40' (12 m) O.C. ON CURVES WHERE ADVISORY SPEEDS ARE 10 M.P.H (20 km/h) LOWER THAN POSTED SPEEDS.

DESIGN NOTES

1. DOUBLE LANE LINE MARKERS SHALL BE USED UNLESS SPECIFIED OTHERWISE.
2. EXCEPT AS SHOWN ON THE LANE REDUCTION TRANSITION AND FREEWAY EXIT RAMP DETAIL, MARKERS ARE NOT TO BE SPECIFIED ON RIGHT EDGE LINES.
3. THE EXACT MARKER LIMITS, SPACING, AND COLOR SHOULD BE INCLUDED IN THE PLANS.
4. MARKERS SHOULD NOT BE USED ALONGSIDE CURBS EXCEPT FOR EXTREMELY SHORT SECTIONS OF CURBS WHERE NOT MORE THAN TWO MARKERS WOULD BE INVOLVED.



LEFT TURN

* SEE TWO-LANE/TWO-WAY WHERE MARKERS CONTINUE
 ** WHERE THE MEDIAN WIDTH IS 6' (2 m) OR LESS USE TWO-WAY MARKERS.

All dimensions are in inches (millimeters) unless otherwise shown.

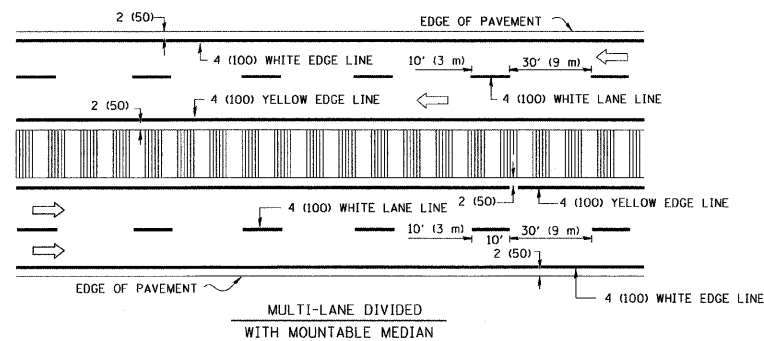
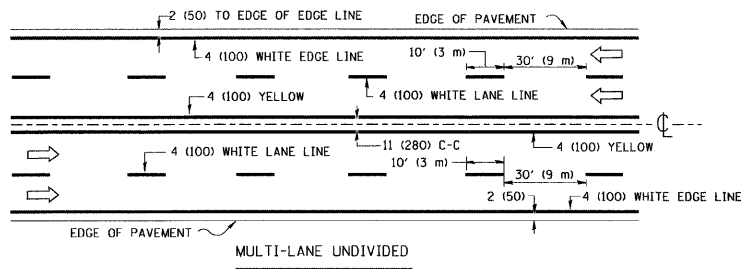
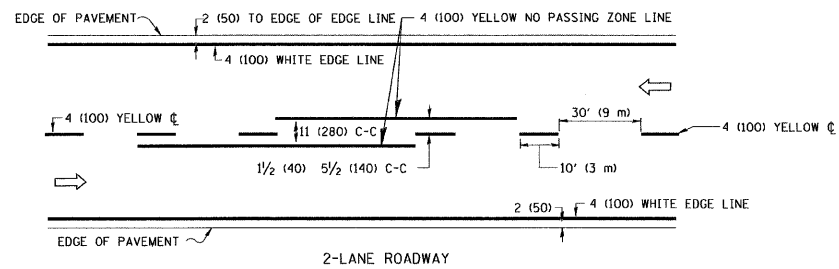
FILE NAME =	USER NAME = drivakosgn	DESIGNED -	REVISED - T. RAMMACHER 09-19-94
est\pwwork\pwwdot\drivakosgn\10108315\td.ltdgn		DRAWN -	REVISED - T. RAMMACHER 03-12-99
		CHECKED -	REVISED - T. RAMMACHER 01-06-00
		DATE -	REVISED - C. JUICIUS 09-09-09

STATE OF ILLINOIS
 DEPARTMENT OF TRANSPORTATION

TYPICAL APPLICATIONS
 RAISED REFLECTIVE PAVEMENT MARKERS (SNOW-PLOW RESISTANT)

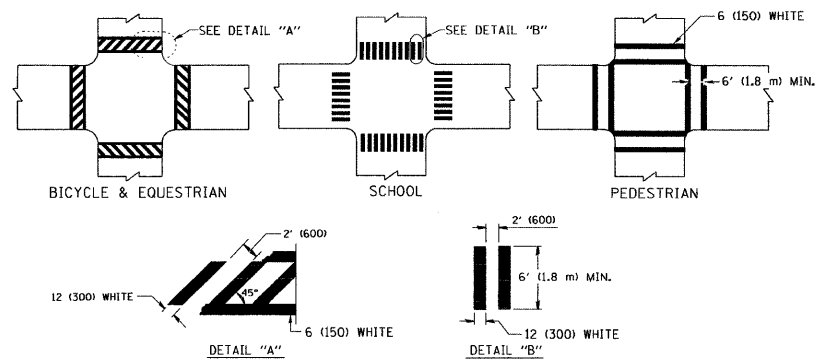
SCALE: NONE SHEET NO. 1 OF 1 SHEETS STA. TO STA.

F.A.P. RTE.	SECTION	COUNTY	TOTAL SHEETS	SHEET NO.
352	2011-023-I	LAKE	15	12
TC-11		CONTRACT NO. 60P23		
FED. ROAD DIST. NO. 1 ILLINOIS FED. AID PROJECT				

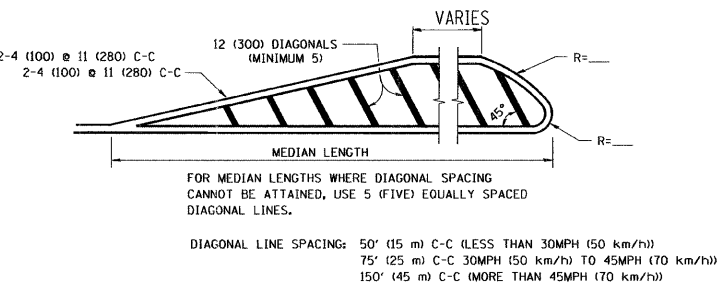
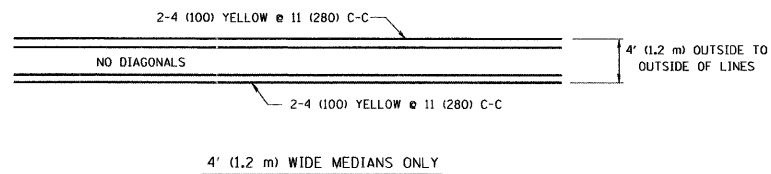


NOTE: MEDIANS WITH BARRIER CURB DO NOT REQUIRE AN EDGE LINE

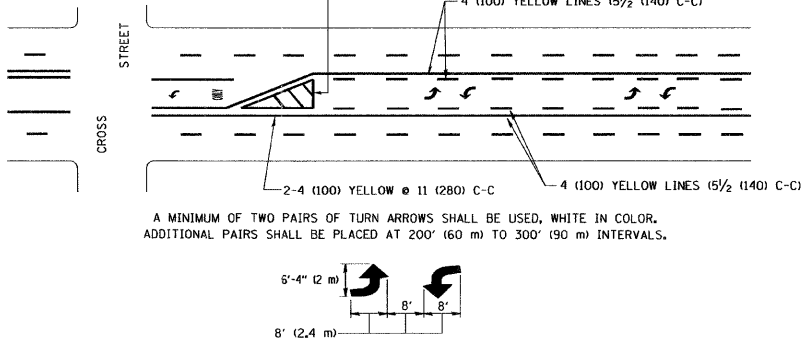
TYPICAL LANE AND EDGE LINE MARKING



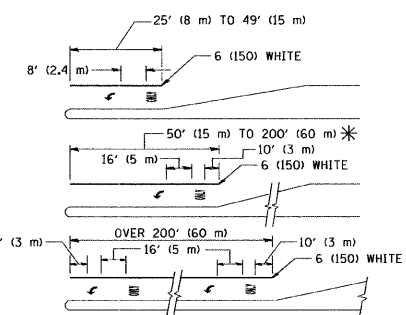
TYPICAL CROSSWALK MARKING



MEDIANS OVER 4' (1.2 m) WIDE

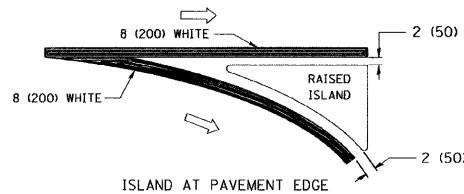
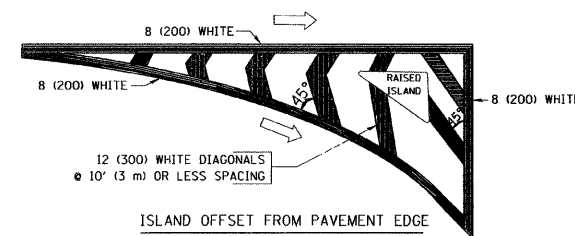


TYPICAL PAINTED MEDIAN MARKING



FULL SIZE LETTERS 8' (2.4 m) AND ARROWS SHALL BE USED.
 AREA = 15.6 SQ. FT. (1.5 m²) ONLY AREA = 20.8 SQ. FT. (1.9 m²)
 * TURN LANES IN EXCESS OF 400' (120 m) IN LENGTH MAY HAVE AN ADDITIONAL SET OF ARROW - "ONLY" INSTALLED MIDWAY BETWEEN THE OTHER TWO SETS OF ARROW - "ONLY".

TYPICAL TURN LANE MARKING



TYPICAL ISLAND MARKING

TYPE OF MARKING	WIDTH OF LINE	PATTERN	COLOR	SPACING / REMARKS
CENTERLINE ON 2 LANE PAVEMENT	4 (100)	SKIP-DASH	YELLOW	10' (3 m) LINE WITH 30' (9 m) SPACE
CENTERLINE ON MULTI-LANE UNDIVIDED PAVEMENT	2 @ 4 (100)	SOLID	YELLOW	11 (280) C-C
NO PASSING ZONE LINES: FOR ONE DIRECTION	4 (100)	SOLID	YELLOW	5 1/2 (140) C-C FROM SKIP-DASH CENTERLINE
FOR BOTH DIRECTIONS	2 @ 4 (100)	SOLID	YELLOW	11 (280) C-C OMIT SKIP-DASH CENTERLINE BETWEEN
LANE LINES	4 (100) 5 (125) ON FREEWAYS	SKIP-DASH SKIP-DASH	WHITE WHITE	10' (3 m) LINE WITH 30' (9 m) SPACE
DOTTED LINES (EXTENSIONS OF CENTER, LANE OR TURN LANE MARKINGS)	SAME AS LINE BEING EXTENDED	SKIP-DASH	SAME AS LINE BEING EXTENDED	2' (600) LINE WITH 6' (1.8 m) SPACE
EDGE LINES	4 (100)	SOLID	YELLOW-LEFT WHITE-RIGHT	OUTLINE MOUNTABLE MEDIANS IN YELLOW; EDGE LINES ARE NOT USED NEXT TO BARRIER CURB
TURN LANE MARKINGS	6 (150) LINE; FULL SIZE LETTERS & SYMBOLS (8' (2.4m))	SOLID	WHITE	SEE TYPICAL TURN LANE MARKING DETAIL
TWO WAY LEFT TURN MARKING	2 @ 4 (100) EACH DIRECTION	SKIP-DASH AND SOLID	YELLOW	10' (3 m) LINE WITH 30' (9 m) SPACE FOR SKIP-DASH; 5 1/2 (140) C-C BETWEEN SOLID LINE AND SKIP-DASH LINE
	8' (2.4m) LEFT ARROW	IN PAIRS	WHITE	SEE TYPICAL TWO-WAY LEFT TURN MARKING DETAIL
CROSSWALK LINES (PEDESTRIAN) A. DIAGONALS (BIKE & EQUESTRIAN) B. LONGITUDINAL BARS (SCHOOL)	2 @ 6 (150) 12 (300) @ 45° 12 (300) @ 90°	SOLID SOLID SOLID	WHITE WHITE WHITE	NOT LESS THAN 6' (1.8 m) APART 2' (600) APART 2' (600) APART SEE TYPICAL CROSSWALK MARKING DETAILS.
STOP LINES	24 (600)	SOLID	WHITE	PLACE 4' (1.2 m) IN ADVANCE OF AND PARALLEL TO CROSSWALK, IF PRESENT. OTHERWISE, PLACE AT DESIRED STOPPING POINT, PARALLEL TO CROSSROAD CENTERLINE, WHERE POSSIBLE
PAINTED MEDIANS	2 @ 4 (100) WITH 12 (300) DIAGONALS @ 45°	SOLID	YELLOW; TWO WAY TRAFFIC WHITE; ONE WAY TRAFFIC	11 (280) C-C FOR THE DOUBLE LINE SEE TYPICAL PAINTED MEDIAN MARKING.
CORE MARKING AND CHANNELIZING LINES	8 (200) WITH 12 (300) DIAGONALS @ 45°	SOLID	WHITE	DIAGONALS: 15' (4.5 m) C-C (LESS THAN 30MPH (50 km/h)) 20' (6 m) C-C 30MPH (50 km/h) TO 45MPH (70 km/h) 30' (9 m) C-C (OVER 45MPH (70 km/h))
RAILROAD CROSSING	24 (600) TRANSVERSE LINES; "RR" IS 6' (1.8 m) LINE FOR "X"	SOLID	WHITE	SEE STATE STANDARD 78001 AREA OF: "R"=3.6 SQ. FT. (0.33 m ²) EACH "X"=54.0 SQ. FT. (5.0 m ²)
SHOULDER DIAGONALS	12 (300) @ 45°	SOLID	WHITE - RIGHT YELLOW - LEFT	50' (15 m) C-C (LESS THAN 30MPH (50 km/h)) 75' (25 m) C-C (30 MPH (50 km/h) TO 45MPH (70 km/h)) 150' (45 m) C-C (OVER 45MPH (70 km/h))

FOR FURTHER DETAILS ON PAVEMENT MARKING REFER TO
 STANDARD SPECIFICATIONS FOR ROAD AND BRIDGE
 CONSTRUCTION AND STATE STANDARD 780001.

All dimensions are in inches (millimeters)
 unless otherwise shown.

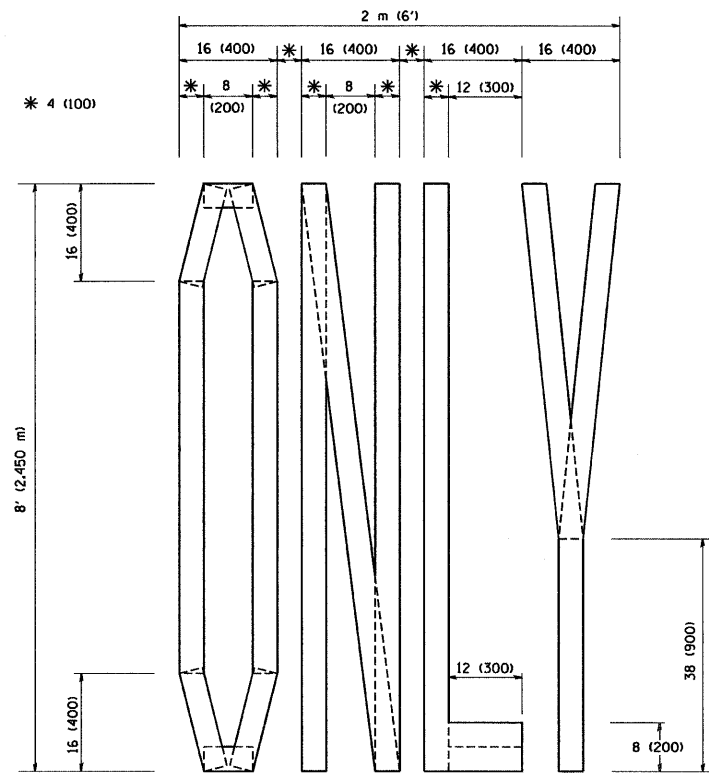
FILE NAME = c:\pwwork\pwwork\d\vivakosgn\ad0108315\te	USER NAME = drivakosgn 3.dgn	DESIGNED - EVERS	REVISED - T. RAMMACHER 10-27-94
		DRAWN -	REVISED - C. JUCIUS 09-09-09
	PLOT SCALE = 50,000 ' / IN.	CHECKED -	REVISED -
	PLOT DATE = 9/9/2009	DATE - 03-19-90	REVISED -

STATE OF ILLINOIS
 DEPARTMENT OF TRANSPORTATION

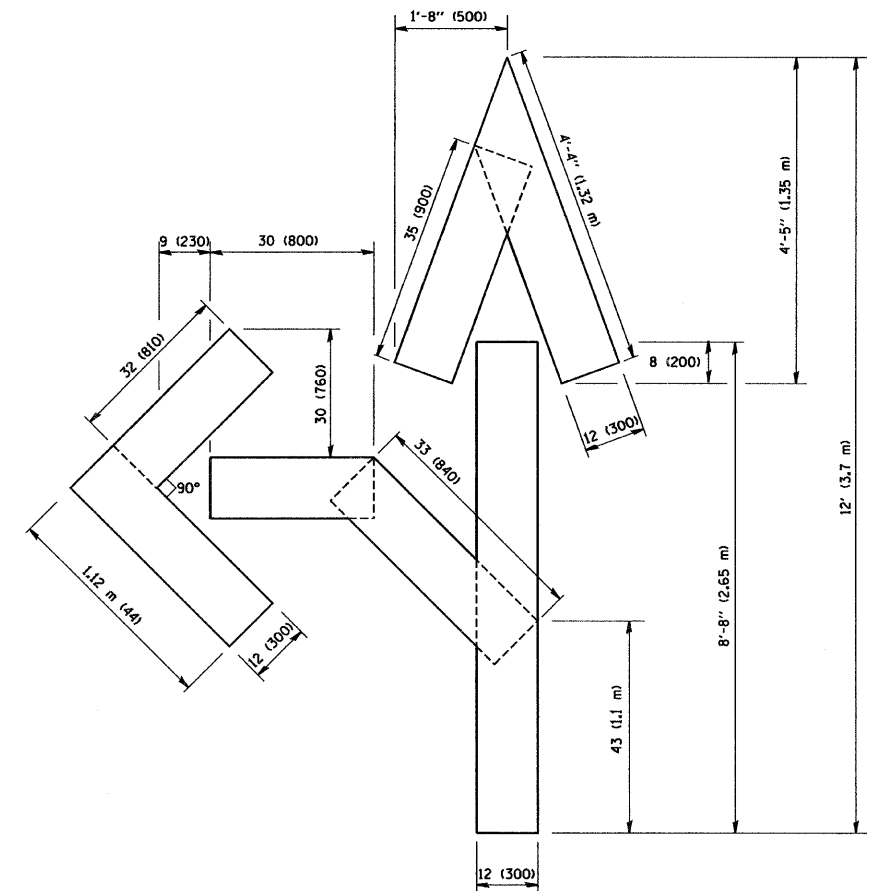
DISTRICT ONE
 TYPICAL PAVEMENT MARKINGS

SCALE: NONE SHEET NO. 1 OF 1 SHEETS STA. TO STA.

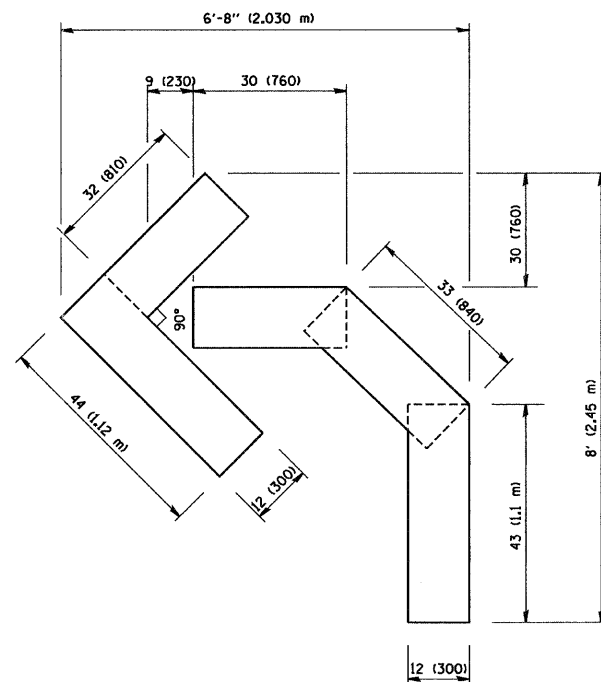
F.A.P. RTE. 352	SECTION 2011-023-I	COUNTY LAKE	TOTAL SHEETS 15	SHEET NO. 13
TC-13		CONTRACT NO. 60P23		
FED. ROAD DIST. NO. 1 ILLINOIS FED. AID PROJECT				



QUANTITY
 4 (100) LINE = 64.1 ft. (19.7 m)
 21.1 sq. ft. (1.97 sq. m)



QUANTITY
 4 (100) LINE = 82.5 ft. (25.3 m)
 27.5 sq. ft. (2.53 sq. m)



QUANTITY
 4 (100) LINE = 45.5 ft. (13.9 m)
 15.2 sq. ft. (1.39 sq. m)

All dimensions are in inches (millimeters) unless otherwise shown.

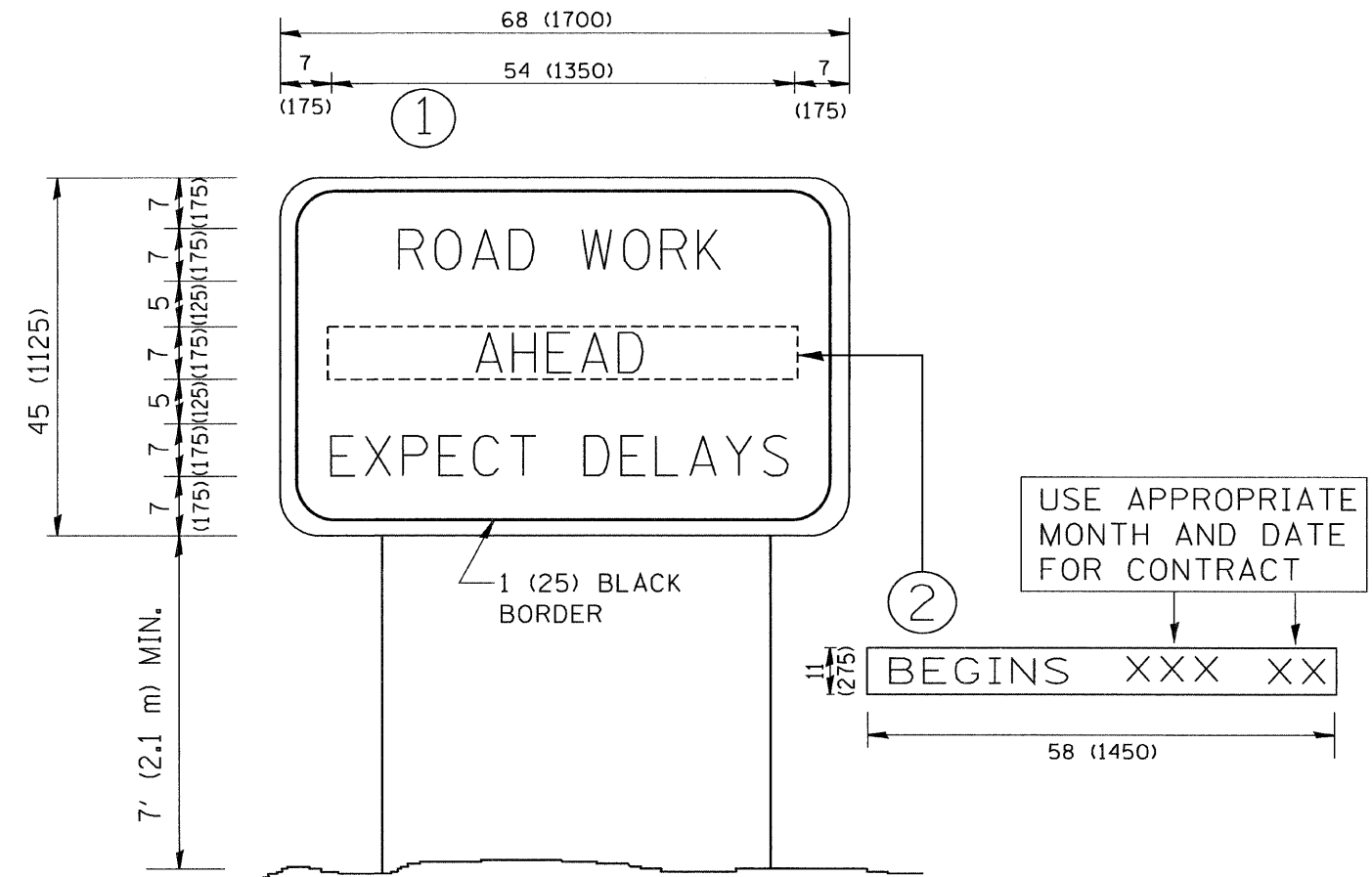
FILE NAME = W:\diststd\22x34\tcl6.dgn	USER NAME = geglianob	DESIGNED -	REVISED -T. RAMMACHER 06-05-96
		DRAWN -	REVISED -T. RAMMACHER 11-04-97
	PLOT SCALE = 50.0000 ' / IN.	CHECKED -	REVISED -T. RAMMACHER 03-02-98
	PLOT DATE = 1/4/2008	DATE - 09-18-94	REVISED -E. GOMEZ 08-28-00

STATE OF ILLINOIS
 DEPARTMENT OF TRANSPORTATION

PAVEMENT MARKING LETTERS AND SYMBOLS
 FOR TRAFFIC STAGING

SCALE: NONE SHEET NO. 1 OF 1 SHEETS STA. TO STA.

F.A.P. RTE.	SECTION	COUNTY	TOTAL SHEETS	SHEET NO.
352	2011-023-I	LAKE	15	14
TC-16			CONTRACT NO. 60P23	
FED. ROAD DIST. NO. 1 ILLINOIS FED. AID PROJECT				



NOTES:

1. USE BLACK LETTERING ON ORANGE BACKGROUND.
2. ERECT SIGNS IN ADVANCE OF THE LOCATION FOR THE "ROAD CONSTRUCTION AHEAD" SIGN AT LOCATIONS AS DIRECTED BY THE ENGINEER.
3. ERECT SIGN ① WITH INSTALLED PANEL ② ONE WEEK PRIOR TO THE START OF CONSTRUCTION.
4. REMOVE PANEL ② SOON AFTER THE START OF CONSTRUCTION.
5. SEE SPECIAL PROVISION FOR "TEMPORARY INFORMATION SIGNING" FOR ADDITIONAL INFORMATION.
6. ONE SIGN ASSEMBLY EQUALS 25.70 SQ. FT. (2.3 SQ. M.)
7. SHALL BE PAID FOR AS TEMPORARY INFORMATION SIGNING.

ALL DIMENSIONS ARE IN INCHES (MILLIMETERS) UNLESS OTHERWISE SHOWN.

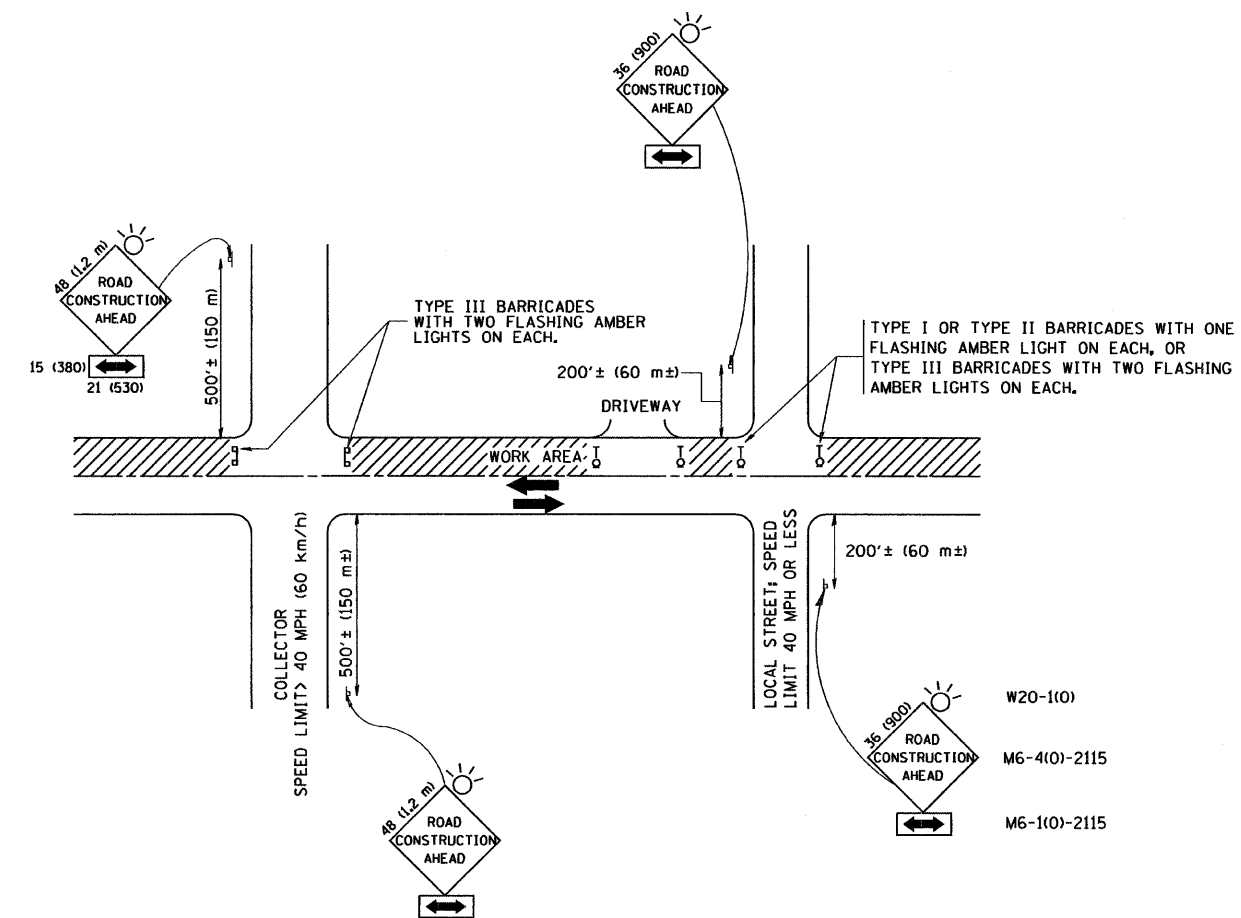
FILE NAME = W:\diststd\22x34\tc22.dgn	USER NAME = geglianobt	DESIGNED -	REVISED - R. MIRS 09-15-97
		DRAWN -	REVISED - R. MIRS 12-11-97
	PLOT SCALE = 50.000' / IN.	CHECKED -	REVISED - T. RAMMACHER 02-02-99
	PLOT DATE = 1/4/2008	DATE -	REVISED - C. JUCIUS 01-31-07

**STATE OF ILLINOIS
DEPARTMENT OF TRANSPORTATION**

**ARTERIAL ROAD
INFORMATION SIGN**

SCALE: NONE SHEET NO. 1 OF 1 SHEETS STA. TO STA.

F.A.P. RTE.	SECTION	COUNTY	TOTAL SHEETS	SHEET NO.
352	2011-023-1	LAKE	15	15
TC-22		CONTRACT NO. 60P23		
FED. ROAD DIST. NO. 1 ILLINOIS FED. AID PROJECT				



TRAFFIC CONTROL AND PROTECTION FOR SIDE ROADS, INTERSECTIONS, AND DRIVEWAYS

NOTES:

- A. FOR NO LANE RESTRICTION ON THE SIDE ROAD OR DRIVEWAYS
- SIDE ROAD WITH A SPEED LIMIT OF 40 MPH (60 km/h) OR LESS AS SHOWN ON THE DRAWING AND AS DIRECTED BY THE ENGINEER:
 - ONE ROAD CONSTRUCTION AHEAD SIGN 36 x 36 (900x900) WITH A FLASHER AND FLAG MOUNTED ON IT APPROXIMATELY 200' (60 m) IN ADVANCE OF THE MAIN ROUTE.
 - THE CLOSED PORTION OF THE MAIN ROUTE SHALL BE PROTECTED BY BLOCKING WITH TYPE I, TYPE II OR TYPE III BARRICADES, 1/3 OF THE CROSS SECTION OF THE CLOSED PORTION.
 - SIDE ROAD WITH A SPEED LIMIT GREATER THAN 40 MPH (60 km/h) AS SHOWN ON THE DRAWING AND AS DIRECTED BY THE ENGINEER:
 - ONE ROAD CONSTRUCTION AHEAD SIGN 48 x 48 (1.2 m x 1.2 m) WITH A FLASHER MOUNTED ON IT APPROXIMATELY 500' (150 m) IN ADVANCE OF THE MAIN ROUTE.
 - THE CLOSED PORTION OF THE MAIN ROUTE SHALL BE PROTECTED BY BLOCKING WITH TYPE III BARRICADES, 1/2 OF THE CROSS SECTION OF THE CLOSED PORTION.
 - WHEN THE SIDE ROAD LIES BETWEEN THE BEGINNING OF THE MAINLINE SIGNING AND THE WORK ZONE, A SINGLE HEADED ARROW (M6-1) SHALL BE USED IN LIEU OF THE DOUBLE HEADED ARROW (M6-4).
- B. FOR A LANE CLOSURE ON A SIDE ROAD OR DRIVEWAY:
- USE APPLICABLE PORTIONS OF THE TYPICAL APPLICATION OF TRAFFIC CONTROL DEVICES (STD. 70150), STD. 701606 OR THE APPROPRIATE STANDARD). THE SPACING OF SIGNS AND BARRICADES SHALL BE ADJUSTED FOR FIELD CONDITIONS AS DIRECTED BY THE ENGINEER. THE DIRECTIONAL ARROW SHALL BE COVERED OR REMOVED WHEN NO LONGER CONSISTENT WITH THE SIDE ROAD LANE CLOSURE.
- C. ADVANCE WARNING SIGNS ARE TO BE OMITTED ON DRIVEWAY UNLESS OTHERWISE NOTED.
- D. THE TRAFFIC CONTROL AND PROTECTION FOR SIDE ROADS, INTERSECTIONS, AND DRIVEWAYS SHALL BE INCIDENTAL TO THE COST OF SPECIFIED TRAFFIC CONTROL STANDARDS OR ITEMS.

All dimensions are in millimeters (inches) unless otherwise shown.

FILE NAME = W:\diststd\22x34\tcl0.dgn	USER NAME = goglionobz	DESIGNED - LHA	REVISED - J. OBERLE 10-18-95
		DRAWN -	REVISED - A. HOUSEH 03-06-96
	PLOT SCALE = 50,000' / IN.	CHECKED -	REVISED - A. HOUSEH 10-15-96
	PLOT DATE = 1/4/2008	DATE - 06-89	REVISED - T. RAMMACHER 01-06-00

STATE OF ILLINOIS
DEPARTMENT OF TRANSPORTATION

TRAFFIC CONTROL AND PROTECTION FOR SIDE ROADS, INTERSECTIONS, AND DRIVEWAYS	
SCALE: NONE	SHEET NO. 1 OF 1 SHEETS
STA.	TO STA.

F.A.P. RTE. 352	SECTION 2011-023-1	COUNTY LAKE	TOTAL SHEETS 15	SHEET NO. 15A
TC-10		CONTRACT NO. 60P23		
FED. ROAD DIST. NO. 1 ILLINOIS FED. AID PROJECT				