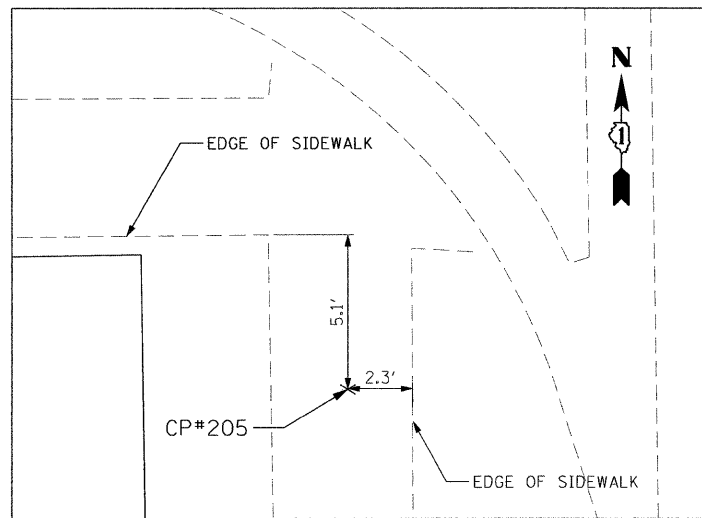


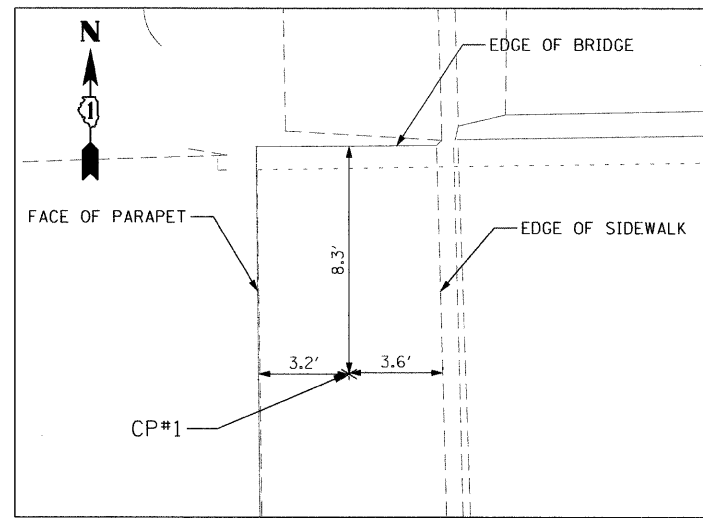
ROUTE 1 (HALSTED AVENUE) ALIGNMENT

POINT 102	N 1,782,687.854	E 1,175,073.343	STA 94+94.23
COURSE FROM 102 TO 105 N 0° 55' 39" W DISTANCE 620.043 FT			
POINT 105	N 1,783,307.816	E 1,175,063.305	STA 101+14.27
COURSE FROM 105 TO 103 N 2° 44' 48" W DISTANCE 389.958 FT			
POINT 103	N 1,783,697.326	E 1,175,044.619	STA 105+04.23



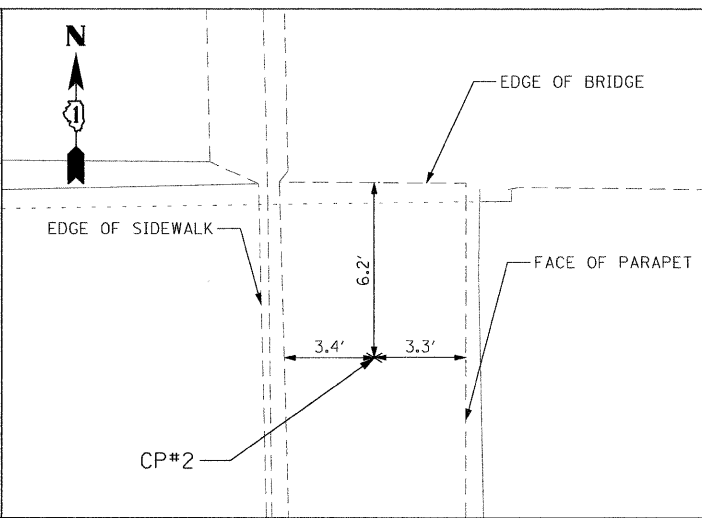
**CONTROL POINT 205**

SET CUT CROSS  
N 1782703.86, E 1175030.31  
STA 95+10.9 O/S 42.76' LT



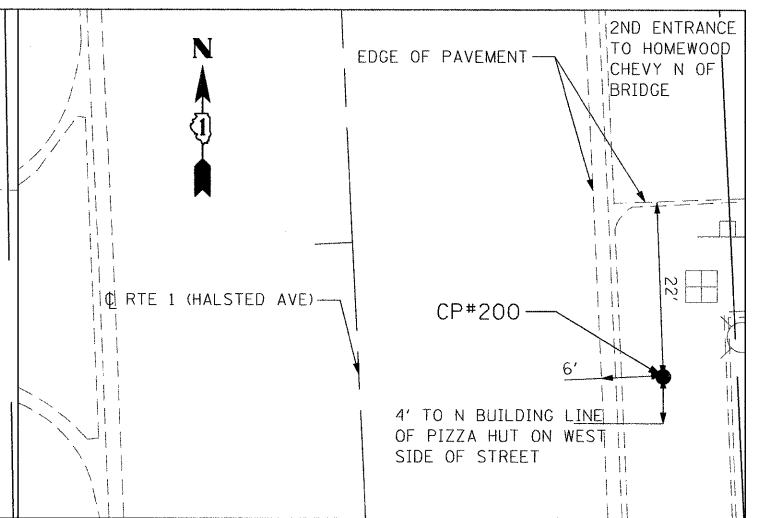
**CONTROL POINT 1**

FOUND CUT CROSS  
N 1783194.02 E 1175027.5  
STA 100+01.08 O/S 37.64' LT



**CONTROL POINT 2**

FOUND CUT CROSS  
N 1783194.02 E 1175027.5  
STA 100+02.83 O/S 37.77' RT



**CONTROL POINT 200**

FOUND IRON ROD WITH PLASTIC CAP  
N 1783475.57, E 1175095.55  
STA 102+80.3 O/S 49.2' RT

P:\2007\ME07088-Var-Ver-Ph1\Cadd\W030-IL-Rt1\Shvs\06-D160P38-sht-ATB.dgn  
 11/14/2011 10:00 AM  
 USER: NAME  
 MILLENNIA PROFESSIONAL SERVICES

200 22ND Street, Suite 216, Lombard, IL 60148  
630.705.0110 voice, 630.839.2566 fax  
www.mps-il.com  
**MILLENNIA PROFESSIONAL SERVICES**

DESIGNED	CJD	REVISED	-
DRAWN	CJD	REVISED	-
CHECKED	TVN	REVISED	-
DATE	11/14/2011	REVISED	-

**STATE OF ILLINOIS  
DEPARTMENT OF TRANSPORTATION**

**ILLINOIS ROUTE 1 (HALSTED ST)  
OVER IC RR (ABANDONED) (SN 016-2859)**

SCALE: 1"=50' SHEET NO. 1 OF 1 SHEETS STA. 99+00 TO STA. 102+00

F.A.P. RTE.	SECTION	COUNTY	TOTAL SHEETS	SHEET NO.
876	2011-032-BR	COOK	41	6
CONTRACT NO. 60P38				