

MAINTENANCE OF TRAFFIC GENERAL NOTES

1. THE SUGGESTED STAGES OF CONSTRUCTION AND TRAFFIC CONTROL PLANS SHALL SERVE AS A GUIDE FOR SAFE DIVERSION OF TRAFFIC DURING EXECUTION OF THIS CONTRACT. HOWEVER, THE CONTRACTOR MAY IMPROVE OR MODIFY THE TRAFFIC CONTROL PLANS TO MEET CONSTRUCTION NEEDS BUT NOT AT THE EXPENSE OF PUBLIC SAFETY OR CONVENIENCE. ANY CHANGES TO THE TRAFFIC CONTROL PLAN SHALL BE SUBMITTED TO THE ENGINEER FOR APPROVAL.
2. THE CONTRACTOR SHALL BE REQUIRED TO MAINTAIN TRAFFIC IN ACCORDANCE WITH THE TRAFFIC CONTROL PLANS, SPECIAL PROVISIONS, APPLICABLE STATE STANDARDS, AND AS DIRECTED BY THE ENGINEER.
3. CONTRACTOR SHALL MAINTAIN A MINIMUM OF ONE THROUGH LANE IN EACH DIRECTION THROUGH OUT THE PROJECT AREA AT ALL TIMES.
4. THE ENGINEER SHALL BE INFORMED 48 HOURS IN ADVANCE OF ANY CHANGE TO THE SUGGESTED STAGES OF CONSTRUCTION AND TRAFFIC CONTROL PLANS
5. TYPE II BARRICADES OR DRUMS SHALL BE PROVIDED AS SHOWN IN THE PLANS AND SPACED 50 FEET CENTER TO CENTER ON TANGENT, AND 25 FEET CENTER TO CENTER ON TAPERS AND CURVES.
6. THE CONTRACTOR SHALL PROVIDE ADEQUATE TEMPORARY DRAINAGE AND EROSION CONTROL PROTECTION DURING ALL PHASES OF CONSTRUCTION.
7. ALL EXISTING SIGNS THAT CONFLICT WITH THE TRAFFIC CONTROL PLAN SHALL BE COVERED OR REMOVED IN ACCORDANCE WITH ARTICLE 107.25 OF THE STANDARD SPECIFICATIONS.
8. THE CONTRACTOR SHALL PROVIDE, INSTALL, MAINTAIN AND REMOVE ALL SIGNS AND SIGN SUPPORTS REQUIRED FOR TRAFFIC CONTROL AND PROTECTION.
9. THE CONTRACTOR SHALL PLACE A CHANGEABLE MESSAGE SIGN AT EACH END OF THE PROJECT AND/OR AS DIRECTED BY THE ENGINEER TO INFORM MOTORISTS OF UPCOMING CONSTRUCTION ACTIVITIES. THE MESSAGE SIGNS WITH THE APPROPRIATE INFORMATION SHALL BE IN PLACED TWO WEEKS BEFORE START OF CONSTRUCTION ACTIVITY. THIS WORK IS TO BE PAID FOR AT THE CONTRACT UNIT PRICE PER CALENDAR MONTH, "CHANGEABLE MESSAGE SIGN".
10. THE CONTRACTOR SHALL MAINTAIN THE EROSION CONTROL MEASURES DURING CONSTRUCTION.

SEQUENCE OF CONSTRUCTION

PRE-STAGE

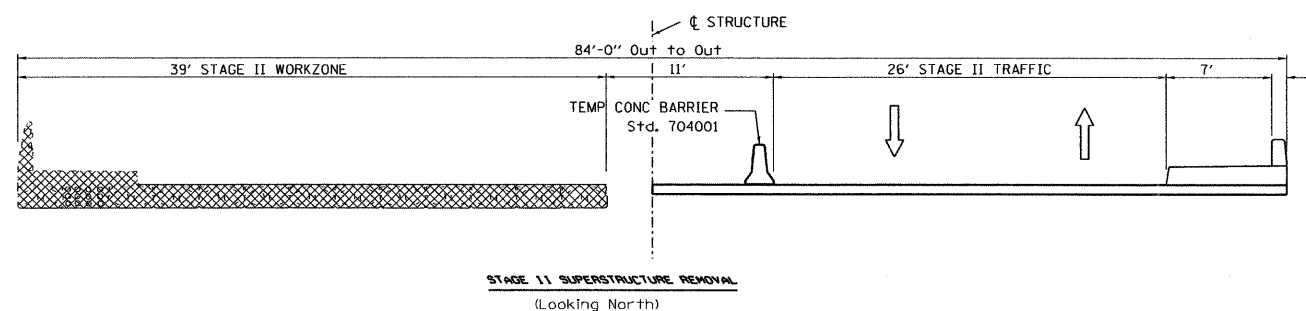
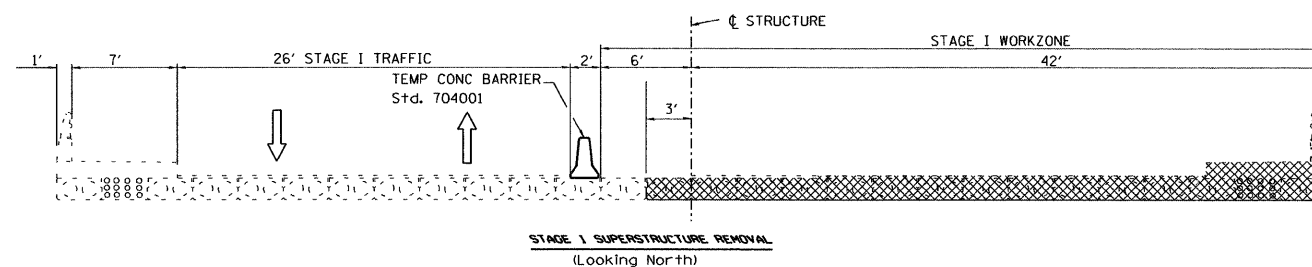
1. INSTALL EROSION CONTROL MEASURES.
2. PLACE STAGE I TRAFFIC CONTROL DEVICES AND TEMPORARY PAVEMENT MARKINGS PER PLAN.
3. UTILIZE IDOT STANDARD TRAFFIC CONTROL STANDARDS TO MAINTAIN TRAFFIC.

STAGE I

1. REMOVE EXISTING NORTHBOUND SUPERSTRUCTURE (SEE SHEET NO 22 FOR TYPICAL SECTION)
2. CONSTRUCT NORTHBOUND SUPERSTRUCTURE AND BRIDGE APPROACH PER PLAN
3. REMOVE AND INSTALL NORTHBOUND CURB AND GUTTER PER PLAN.
4. INSTALL PROPOSED SIDEWALK, DRIVEWAY AND GUARDRAIL ON THE EAST SIDE PER PLAN
5. SEE SUGGESTED STAGES OF CONSTRUCTION PLANS TO MAINTAIN TRAFFIC.
6. REMOVE STAGE I TRAFFIC CONTROL AND PLACE STAGE II TRAFFIC CONTROL DEVICES AND TEMPORARY PAVEMENT MARKINGS PER PLAN. UTILIZE IDOT STANDARD TRAFFIC CONTROL STANDARDS TO MAINTAIN TRAFFIC.

STAGE II

1. REMOVE EXISTING SOUTHBOUND SUPERSTRUCTURE (SEE SHEET NO 22 FOR TYPICAL SECTION)
2. CONSTRUCT SOUNDBOUND SUPERSTRUCTURE AND BRIDGE APPROACH PER PLAN
3. REMOVE AND INSTALL SOUHBOUND CURB AND GUTTER PER PLAN.
4. INSTALL PROPOSED SIDEWALK, DRIVEWAY AND GUARDRAIL ON THE WEST SIDE PER PLAN
5. SEE SUGGESTED STAGES OF CONSTRUCTION PLANS TO MAINTAIN TRAFFIC.
6. REMOVE STAGE I TRAFFIC CONTROL AND PLACE STAGE II TRAFFIC CONTROL DEVICES AND TEMPORARY PAVEMENT MARKINGS PER PLAN. UTILIZE IDOT STANDARD TRAFFIC CONTROL STANDARDS TO MAINTAIN TRAFFIC.
7. MILL AND RESURFACE PER PLAN.
8. INSTALL PERMANENT PAVEMENT MARKING AND LANDSCAPING PER PLAN.
9. UTILIZE IDOT STANDARD TRAFFIC CONTROL STANDARDS TO MAINTAIN TRAFFIC.



FILE NAME : P:\2007\MEB7080_Ver-Var-Phi\Cadd\W030_IL_Rt1\Shas\09-D160P38-sht-ST001-GNotes.dgn
 USER : MILES
 USER NAME : Millennium Professional Services



200 22ND Street, Suite 216, Lombard, IL 60148
 630.705.8110 voice, 630.839.2566 fax
 www.mps-il.com

MILLENNIA PROFESSIONAL SERVICES

DESIGNED - CJD	REVISED -
DRAWN - CJD	REVISED -
CHECKED - TVN	REVISED -
DATE - 11/14/2011	REVISED -

STATE OF ILLINOIS
DEPARTMENT OF TRANSPORTATION

ILLINOIS ROUTE 1 (HALSTED ST)
OVER IC RR (ABANDONED) (SN 016-2859)

SUGGESTED STAGES OF CONSTRUCTION
AND TRAFFIC CONTROL
GENERAL NOTES AND DESCRIPTION

F.A.P. RTE.	SECTION	COUNTY	TOTAL SHEETS	SHEET NO.
876	2011-032-BR	COOK	41	9
CONTRACT NO. 60P38				

SCALE: N/A SHEET NO. OF SHEETS STA. TO STA.

FED. ROAD DIST. NO. 1 [ILLINOIS] FED. AID PROJECT

P:\2007\MEB7080_Ver-Var-Phi\Cadd\W030_IL_Rt1\Shas\09-D160P38-sht-ST001-GNotes.dgn