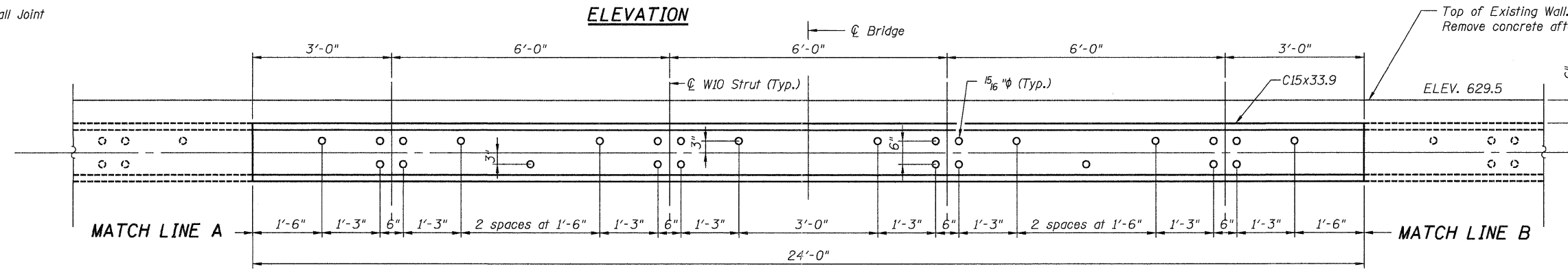
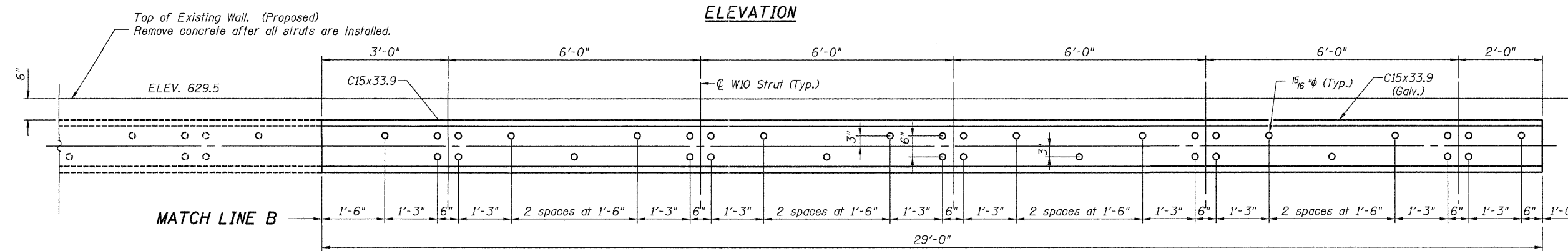


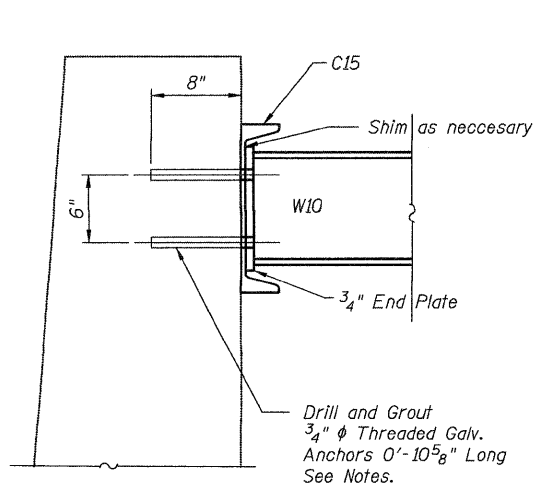
**ELEVATION**



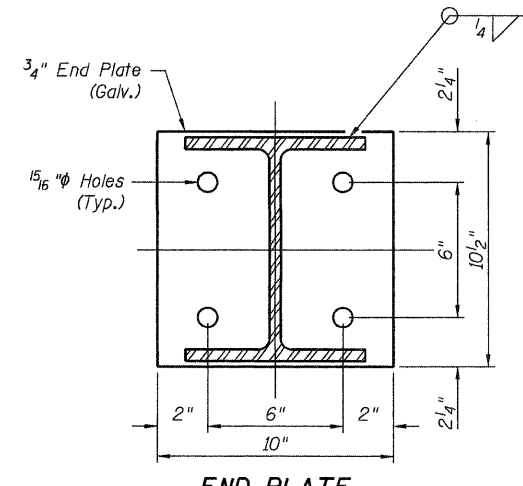
**ELEVATION**



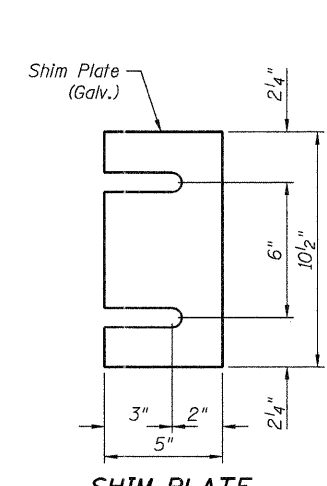
**ELEVATION**



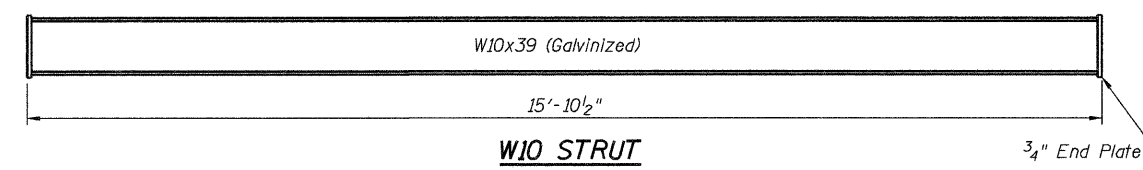
**SECTION A-A**



**END PLATE**



**SHIM PLATE**



**W10 STRUT**

**ABUTMENT  
BILL OF MATERIAL**

Furnishing and Erecting Structural Steel	Pound	14,860
--	-------	--------

**NOTES:**  
 Holes in the concrete for anchor bolts shall be drilled through the base plates to the diameter and depth shown or according to the manufacturer's recommendation after struts and channels have been erected and adjusted.  
 Prior to setting the struts, the holes shall be dry and all dust and loose particles shall be removed by the use of compressed air or vacuuming.  
 The anchor bolts, furnished and installed and including the epoxy grout or capsules shall not be paid for separately but shall be included in the unit bid price for Furnishing and Erecting Structural Steel.  
 Contractor to position channels and struts simultaneously.  
 Anchoring channel before positioning struts may cause struts to not clear anchor rods.  
 Grout threaded anchor rods after W10 struts are positioned.  
 Falsework shall not be supported by struts.