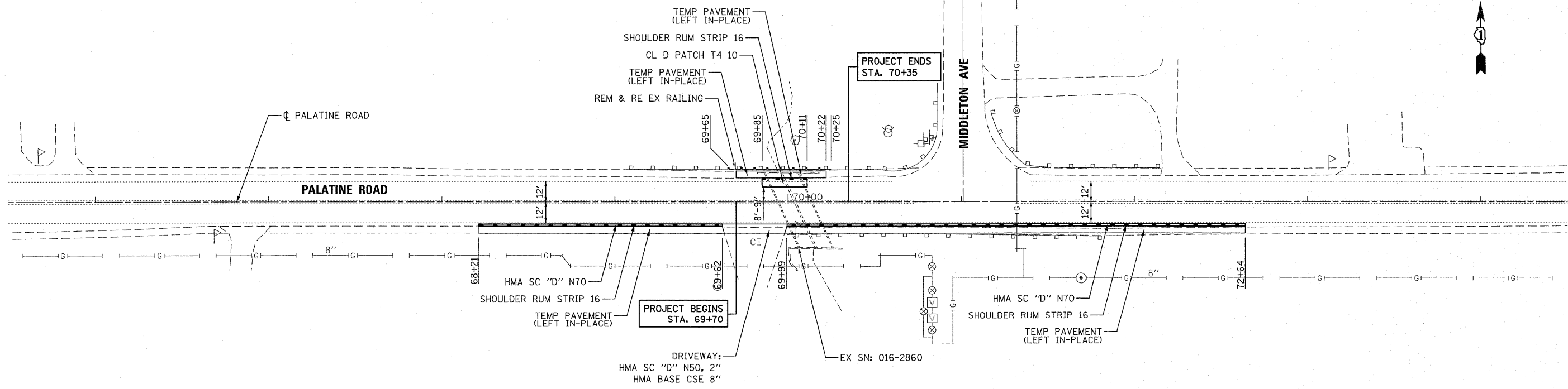


- LEGEND:**
- CLASS D PATCHES, TYPE IV, 10 INCH
 - DRIVEWAY PAVEMENT REMOVAL
 - EARTH EXCAVATION
 - SHOULDER RUMBLE STRIP REMOVAL
 - LINEAR ITEMS REMOVAL



FILE NAME =
...\\DISP39-shht-plen.dgn



DESIGNED - ADW	REVISED - RJD 11/15/2011
DRAWN - GEW	REVISED -
CHECKED - RJD	REVISED -
DATE - 12/12/2011	REVISED -

**STATE OF ILLINOIS
DEPARTMENT OF TRANSPORTATION**

**PALATINE ROAD OVER SALT CREEK
EXISTING & PROPOSED PLAN**

SCALE: 1"=30' SHEET NO. 1 OF 1 SHEETS STA. 69+70 TO STA. 70+35

F.A.U. RTE.	SECTION	COUNTY	TOTAL SHEETS	SHEET NO.
1285	2011-033-T	COOK	18	6
CONTRACT NO. 60P39				
ILLINOIS FED. AID PROJECT				