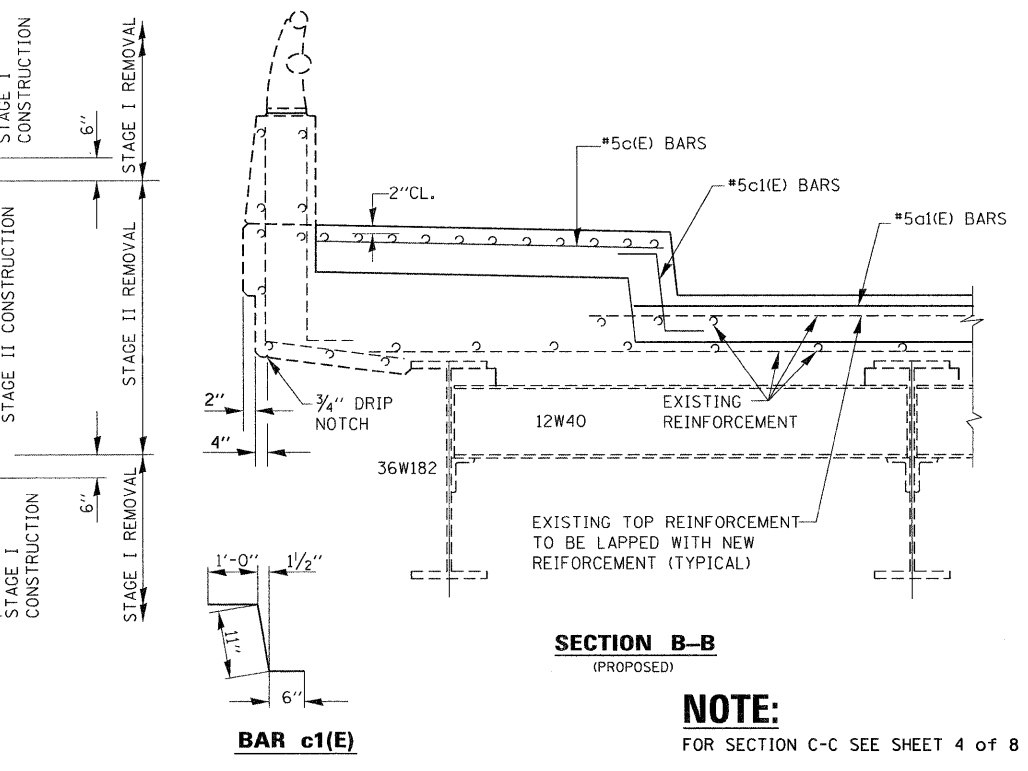
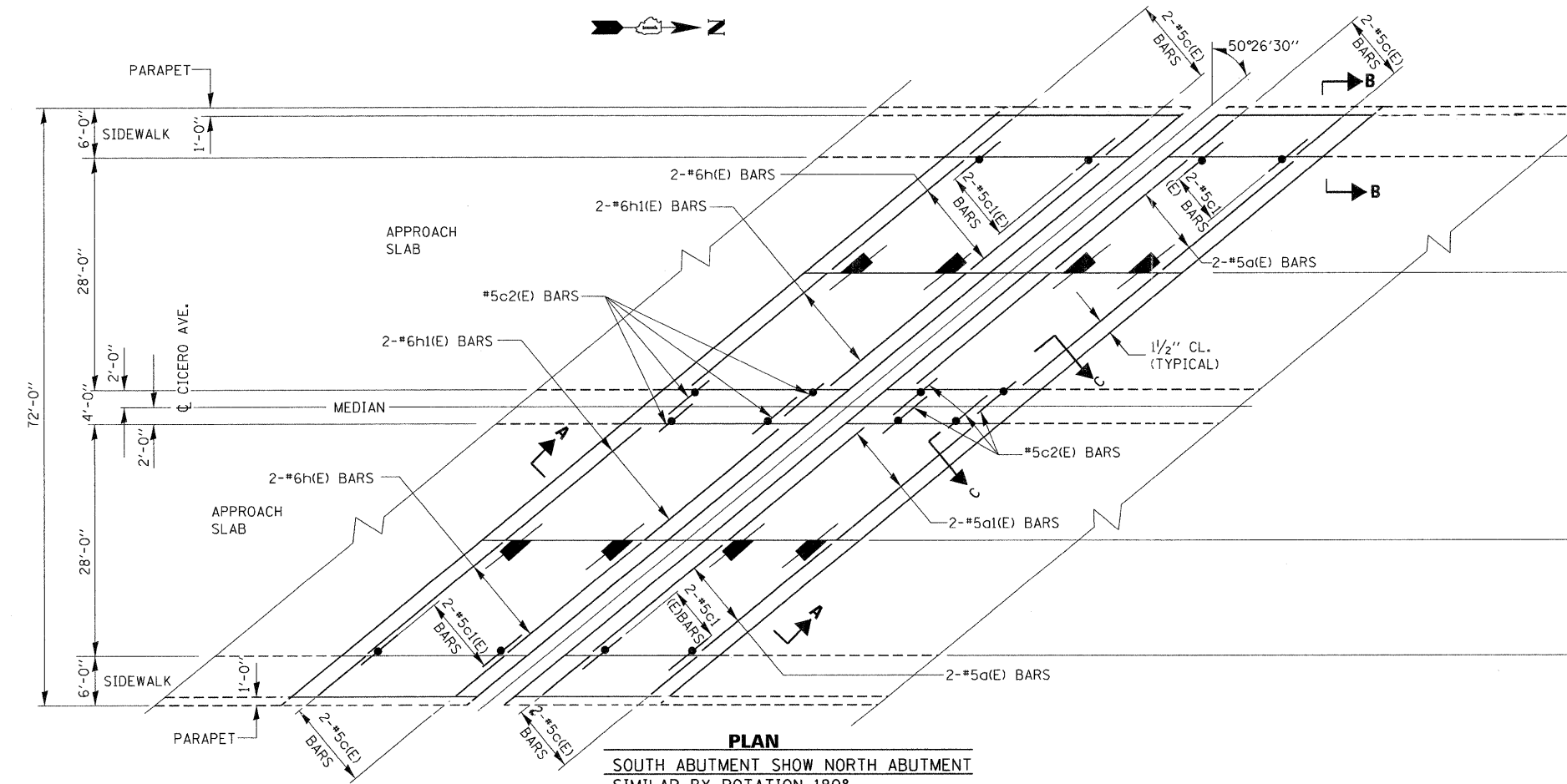


BILL OF MATERIALS

BAR	NO.	SIZE	LENGTH	SHAPE
a(E)	8	#5	21'-10"	—
a1(E)	8	#5	22'-0"	—
h(E)	8	#6	21'-10"	—
h1(E)	8	#6	22'-0"	—
c(E)	8	#5	9'-3"	—
c1(E)	8	#5	2'-5"	┘
c2(E)	16	#5	5'-11"	┘
REINFORCEMENT BARS (EPOXY COATED)		POUND	1090	
CONCRETE REMOVAL		CU.YD.	9.4	
CONCRETE SUPERSTRUCTURE		CU.YD.	9.4	
BAR SPLICERS		EACH	16	

LEGEND:
 CONCRETE REMOVAL



NOTE:
 FOR SECTION C-C SEE SHEET 4 OF 8