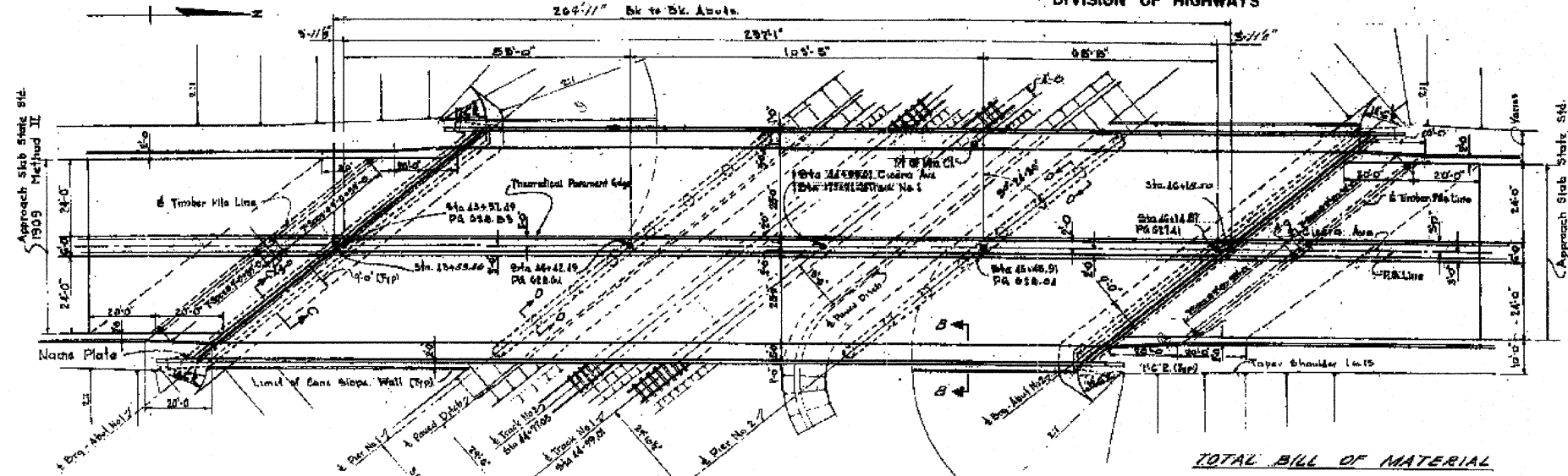


ROUTE	SECTION	COUNTY	TOTAL SHEETS	SHEET NUMBER
FAP 350	2011-064-1	COOK	28	17

CONTRACT NO.: 60P83

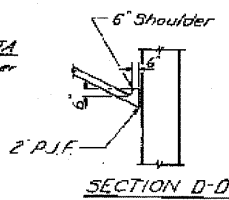
STATE OF ILLINOIS
DEPARTMENT OF PUBLIC WORKS & BUILDINGS
DIVISION OF HIGHWAYS

FOR INFORMATION ONLY



GENERAL NOTES
All reinforcement bars shall be lapped 24 dia. unless otherwise shown.
Diaphragm connections may be adopted to shop welding subject to approval by the Engineer.
Field welding of construction accessories will not be permitted to the bottom flange of beams or girders nor to the top flange for a distance equal to 24 times the span length each way from the field supports. Field welding in other areas will be permitted only when approved by the Engineer. Anchor bolts shall be set before bolting diaphragms over supports.
Slope wall shall be reinforced with welded wire fabric 6"x6" mesh, weighing 50# per 100 sq. ft.
The Contractor shall drive a steel test pile in a permanent location at Abut. #1 & Pier #2 as directed by the Engineer before ordering the remainder of piles.
Class A Excavation for structures includes excavation for slope wall.
Protective Coat shall not be applied to surfaces to which Coal Tar Interlayer Protective Coat is applied.

APPROACH PILE DATA
Type - Crossed Timber
No. Piles - 32
Pile Length - 25 FT



TOTAL BILL OF MATERIAL

Item	Unit	Sub.	Super	Total
Protective Coat	Sq. Yds.	670		670
Coal Tar Interlayer Prot. Coat	Sq. Yds.		1617	1617
Class A Excavation for Structures	CY	854		854
Class X Concrete	CY	870.7	660.7	1531.4
Reinforcement Bars	Lbs.	89,520	171,350	260,870
Structural Steel	L.S.			1
Aluminum Roofing	LF		520	520
Furnishing & Driving Steel Piles (2 B.P.S.)	LF	4444		4444
Steel Test Piles B.P.S.	LF	2		2
Slope Wall	Sq. Yds.			1408
Name Plates	Lbs.			1
Furnishing & Driving Crossed Piles	LF	800		800
2" Bridge Seal Spikes	L.S.			1.5

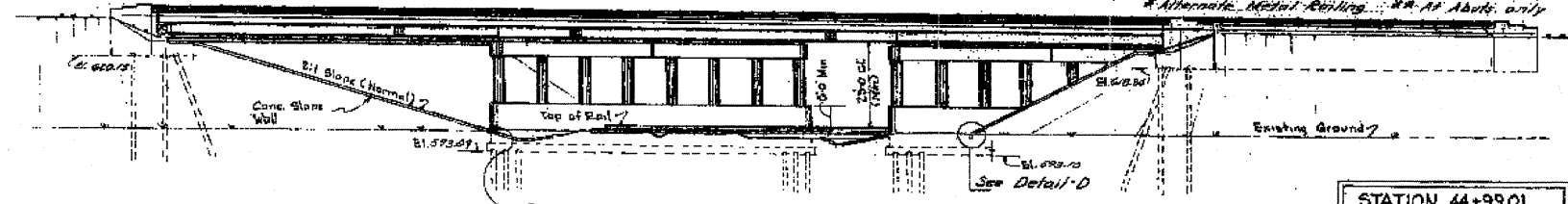
Calculated plan weight of Structural Steel = 713,360 lbs.
Fasteners shall be high strength bolts; bolts 4" dia; open holes 1/4" dia, unless otherwise noted.

The Basic Lead Silico Chromate paint system shall be used for shop and field painting of structural steel.

The concrete rail section above the mandatory construction joint at the top of the slab shall be constructed of Class X Concrete, except the aggregates shall conform to the requirements of Normal Concrete.

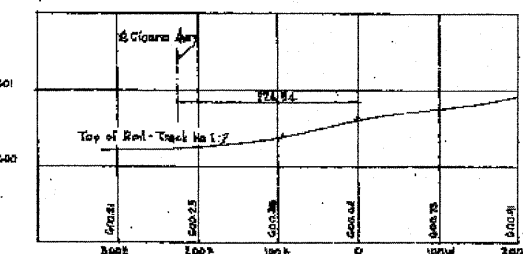
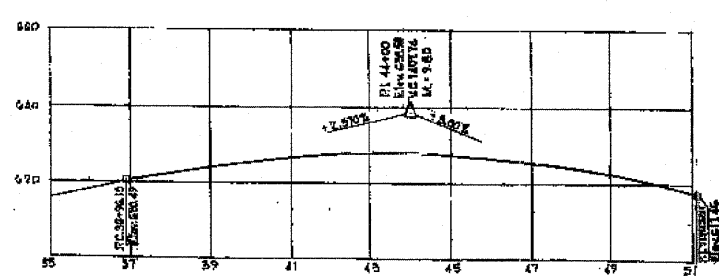
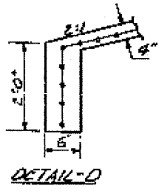
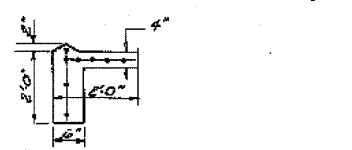
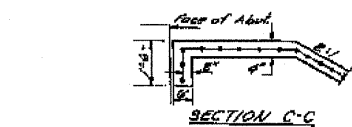
The embankment configuration shown shall be the minimum embankment that must be constructed prior to construction of the piers.

Item	Unit	Sub.	Super	Total
Bif. Conc. Surf. Course Class I	Tons		131	131



STATION 44+99.01
BUILT 19 BY
STATE OF ILLINOIS
S.B.I. RTE 50 SEC. 3068-2VB
F.A. PROJ. U-141(21)
LOADING HS 20

NAME PLATE LETTERING
For details see Std. Dwg. 2115



DESIGNED	N.C.E.	EXAMINED	IMPLEMENTS OF THE DESIGN
CHECKED	S.S.	PREPARED	DESIGN OF WORK
DRAWN	N.C.E.	APPROVED	DESIGN OF WORK
CHECKED	S.S.		

Revised Total Bill of Material, N. Abut. Sta. 44+19.71 to Sta. 44+18.20
S. Abut. Sta. 44+26.55 to Sta. 44+25.56 S.P.M. 12-22-69

Design Loading
HS 20-44
Design Stresses
F_c = 1400 psi (1200 slab)
F_s = 20,000 psi A-36 steel
F_s = 20,000 psi reinforcement
v = 75 p.s.i. 175 psi
A allow = 4000
n = 10
Future Wearing Surface = 25' dia

APPROVED
FOR STRUCTURAL ACCOUNT ONLY
Carl E. Graef
REGISTERED PROFESSIONAL ENGINEER

GENERAL PLAN AND ELEVATION
S.B.I. RTE 50 CICERO AVENUE BRIDGE
OVER B. O. C.T.R.R. TRACKS
PROJECT U-UG-141(21)
F.A. RTE. 99 SEC. 3068-2-VB 4W

COOK COUNTY
STATION 44+99.01
KNOERLE, GRAEF, BENDER AND ASSOCIATES INC.
CONSULTING ENGINEERS - CHICAGO, ILLINOIS