

STATE OF ILLINOIS  
DEPARTMENT OF TRANSPORTATION  
DIVISION OF HIGHWAYS

**PROPOSED  
HIGHWAY PLANS**

LOCATION 1: FAP ROUTE 391: 39TH ST AT RACINE & RR  
LOCATION 2: FAI ROUTE 90/94: I-90/94 AT ASHLAND AVE.  
SECTION: 2011-068-BR  
SUBSTRUCTURE REPAIRS  
COOK COUNTY

C-91-625-11

F.A.I. R.T.E.	SECTION	COUNTY	TOTAL SHEETS	SHEET NO.
90/94	2011-068-BR	COOK	21	1
		ILLINOIS	CONTRACT NO. 60P87	

FOR INDEX OF SHEETS, SEE SHEET NO. 2

IMPROVEMENTS ARE LOCATED IN THE CITY OF CHICAGO.

**TRAFFIC DATA**

39TH ST. (PERSHING RD):  
2006 ADT = 17,000  
POSTED SPEED LIMIT = 30 MPH

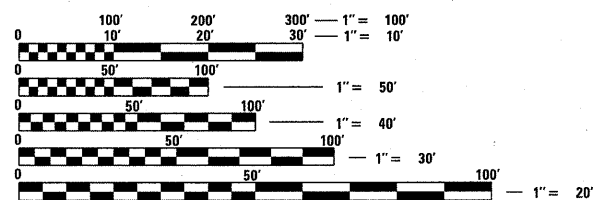
RACINE AVE:  
2010 ADT = 2,900  
POSTED SPEED LIMIT = 30 MPH

I-90/94:  
2009 ADT = 323,400  
POSTED SPEED LIMIT = 55 MPH

ASHLAND AVE:  
2010 ADT = 34,100  
POSTED SPEED LIMIT = 20 MPH

CORTLAND ST:  
2010 ADT = 13,200  
POSTED SPEED LIMIT = 20 MPH

LOCATION 2: SN 016-0133  
I-90/94 OVER ASHLAND AVE.

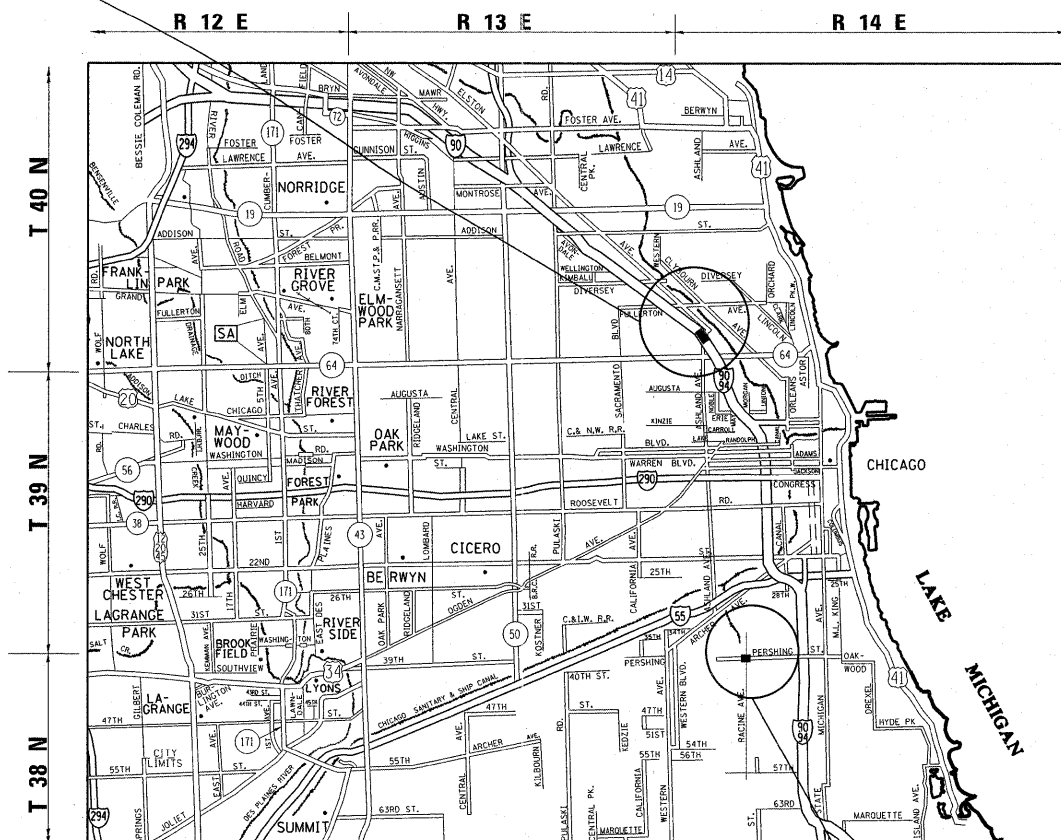


FULL SIZE PLANS HAVE BEEN PREPARED USING STANDARD ENGINEERING SCALES. REDUCED SIZED PLANS WILL NOT CONFORM TO STANDARD SCALES. IN MAKING MEASUREMENTS ON REDUCED PLANS, THE ABOVE SCALES MAY BE USED.

C.U.A.N.  
CHICAGO UTILITY ALERT NETWORK  
(312) 744-7000

PROJECT ENGINEER ROBERT BORO (847) 705-4237  
PROJECT MANAGER ISSAM RAYYAN

CONTRACT NO. 60P87



LOCATION 1:  
GROSS LENGTH = NET LENGTH = 652.20FT. = 0.124MILE  
LOCATION 2:  
GROSS LENGTH = NET LENGTH = 1547.40FT. = 0.293MILE  
TOTAL LENGTH = 2199.60FT. = 0.417MILE

LOCATION 1: SN 016-0396  
39TH ST OVER RACINE AVE. & RR



STATE OF ILLINOIS  
DEPARTMENT OF TRANSPORTATION  
DIVISION OF HIGHWAYS

SUBMITTED 12-23 20 11

*Dean Okin*  
DEPUTY DIRECTOR OF HIGHWAYS, REGION ENGINEER

February 3 20 12  
*John D. Baranzelli, P.E.*  
acting ENGINEER OF DESIGN AND ENVIRONMENT

February 3 20 12  
*William R. Frye, Jr.*  
acting DIRECTOR OF HIGHWAYS, CHIEF ENGINEER

PRINTED BY THE AUTHORITY  
OF THE STATE OF ILLINOIS