

STATE OF ILLINOIS
DEPARTMENT OF TRANSPORTATION
DIVISION OF HIGHWAYS

**PROPOSED
HIGHWAY PLANS**

VARIOUS ROUTES
SECTION: 2011-093-GRR
VARIOUS LOCATIONS IN CENTRAL COOK COUNTY
GUARDRAIL IMPROVEMENTS
PROJECT: HSIP-0005(876)
COOK COUNTY
C-91-048-12

F.A. RTE.	SECTION	COUNTY	TOTAL SHEETS	SHEET NO.
*	2011-093-GRR	COOK	* 26	1
		ILLINOIS	CONTRACT NO. 60R21	
			* 2041 = 27	

FOR INDEX OF SHEETS, SEE SHEET NO. 2

TRAFFIC DATA

31st STREET OVER THE DES PLAINES RIVER

EXISTING ADT = 11,600 (2010)

SPEED LIMIT = 35 MPH

87th STREET BETWEEN IL ROUTE 50 AND PULASKI ROAD

EXISTING ADT = 20,000 (2010)

SPEED LIMIT = 35 MPH

87th STREET BETWEEN WESTERN AVENUE AND DAMEN AVENUE

EXISTING ADT = 31,800 (2010)

SPEED LIMIT = 35 MPH

ARCHER AVENUE AT IL ROUTE 171

EXISTING ADT = 14,200 - 17,700 (2010)

SPEED LIMIT = 45 MPH

IL ROUTE 171 AT I-55

EXISTING ADT = 36,300 (2010)

SPEED LIMIT = 50 MPH

43rd STREET (JOLIET ROAD) OVER THE DES PLAINES RIVER

EXISTING ADT = 12,700 (2010)

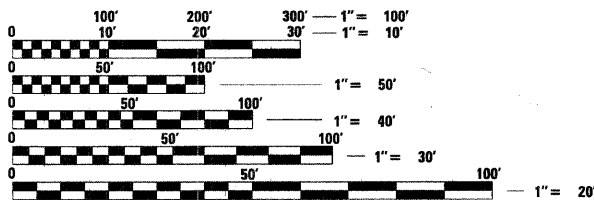
SPEED LIMIT = 40 MPH

WILLOW SPRINGS ROAD / GILBERT AVENUE OVER THE
SANITARY AND SHIP CANAL

EXISTING ADT = 12,900 (2010)

SPEED LIMIT = 40 MPH

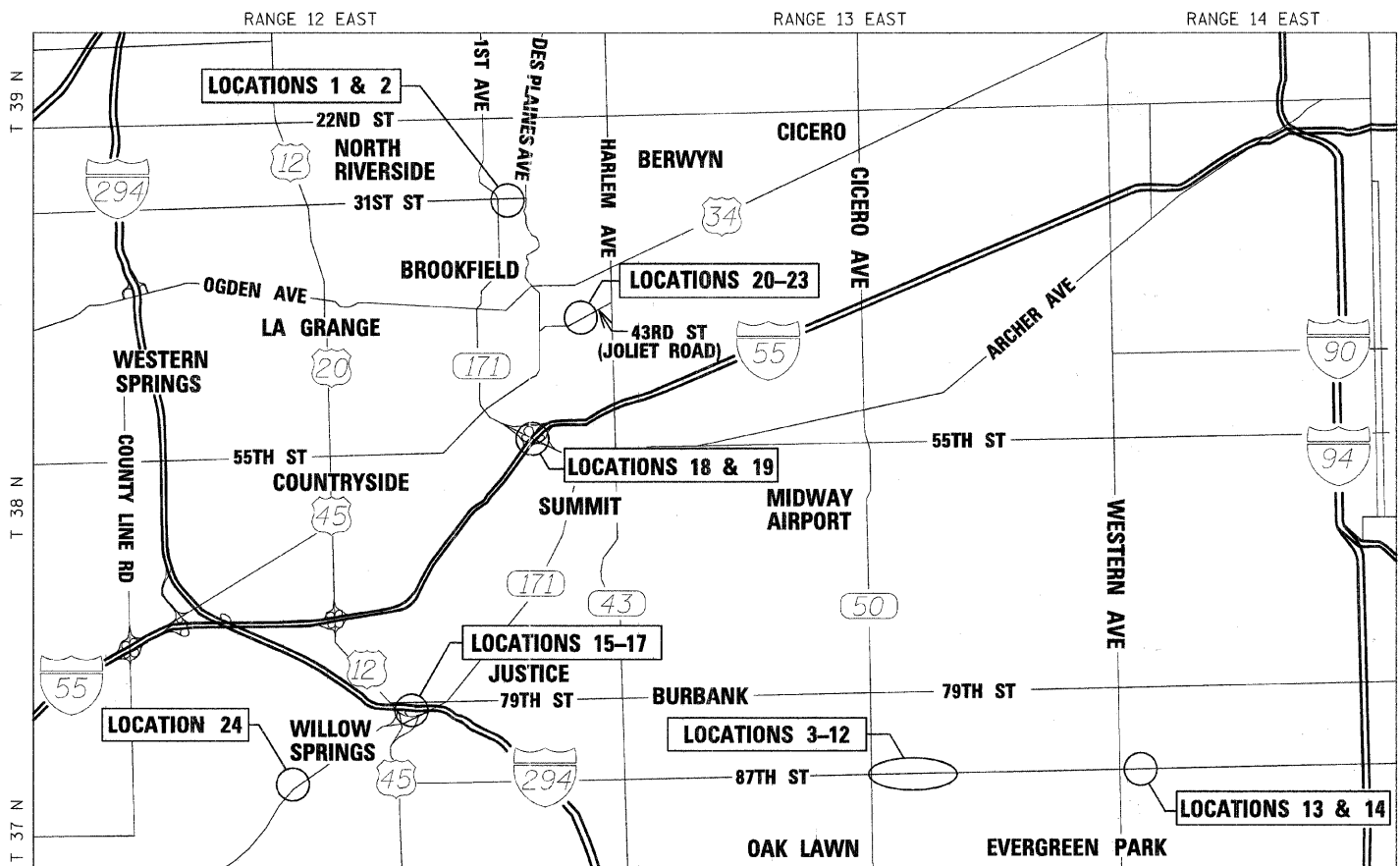
THIS PROJECT IS LOCATED IN THE
CITIES OF CHICAGO AND HOMETOWN
AND IN THE VILLAGES OF JUSTICE,
LYONS, RIVERSIDE, SUMMIT, AND WILLOW
SPRINGS



FULL SIZE PLANS HAVE BEEN PREPARED USING STANDARD
ENGINEERING SCALES. REDUCED SIZED PLANS WILL NOT
CONFORM TO STANDARD SCALES. IN MAKING MEASUREMENTS
ON REDUCED PLANS, THE ABOVE SCALES MAY BE USED.

J.U.L.I.E.
JOINT UTILITY LOCATION INFORMATION FOR EXCAVATION
1-800-892-0123
OR 811
C.U.A.N.
CHICAGO UTILITY ALERT NETWORK
(312) 744-7000

PROJECT ENGINEER: SHIRAZ TARIQUE (LIN) 630-323-5168
PROJECT MANAGER: KEN ENG (IDOT) 847-705-4247
CONTRACT NO. 60R21



CALUMET, LYONS, PALOS, RIVERSIDE, WORTH TOWNSHIPS



PREPARED BY:
LIN ENGINEERING, LTD.
WESTMONT, ILLINOIS
(630) 323-5168

Jeffrey Elvers
exp. 11-30-15

SEAL
JEFFREY ELVERS
062-063942
LICENSED PROFESSIONAL ENGINEER
OF ILLINOIS

STATE OF ILLINOIS
DEPARTMENT OF TRANSPORTATION
DIVISION OF HIGHWAYS

SUBMITTED DECEMBER 15, 2011

Diane M. O'Keefe or
DEPUTY DIRECTOR OF HIGHWAYS, REGION ENGINEER

February 3, 2012
John D. Baramelli, P.E.
acting ENGINEER OF DESIGN AND ENVIRONMENT

February 3, 2012
William R. Frey
acting DIRECTOR OF HIGHWAYS, CHIEF ENGINEER

PRINTED BY THE AUTHORITY
OF THE STATE OF ILLINOIS

INDEX OF SHEETS

SHEET NO.	DESCRIPTION
1	COVER SHEET
2	INDEX, HIGHWAY STANDARDS, AND GENERAL NOTES
3	SUMMARY OF QUANTITIES
4	LOCATION MAP
5-15	ROADWAY PLANS
16-23	END PARAPET RECONSTRUCTION DETAILS
24	DETAILS FOR DEPRESSED CURB AND GUTTER AND SHOULDER TREATMENT AT TBT TY 1 SPL (BD34)
25	TRAFFIC CONTROL DETAILS FOR FREEWAY SHOULDER CLOSURES AND PARTIAL RAMP CLOSURES (TC17)
26	ARTERIAL ROAD INFORMATION SIGNING (TC22)

26A TRAFFIC CONTROL FOR SIDE ROADS, INTERSECTIONS AND DRIVEWAYS (TC 10) 

HIGHWAY STANDARDS

STD. NO.	TITLE
000001-06	STANDARD SYMBOLS, ABBREVIATIONS AND PATTERNS
001001-02	AREAS OF REINFORCEMENT BARS
001006	DECIMAL OF AN INCH AND OF A FOOT
606001-04	CONCRETE CURB TYPE B AND COMBINATION CONCRETE CURB AND GUTTER
630001-10	STEEL PLATE BEAM GUARDRAIL
630301-05	SHOULDER WIDENING FOR TYPE 1 (SPECIAL) GUARDRAIL TERMINALS
631011-08	TRAFFIC BARRIER TERMINAL, TYPE 2
631031-10	TRAFFIC BARRIER TERMINAL, TYPE 6
635006-03	REFLECTOR AND TERMINAL MARKER PLACEMENT
635011-02	REFLECTOR AND MARKER MOUNTING DETAILS
701001-02	OFF-RD OPERATIONS, 2L, 2W, MORE THAN 15' (4.5 m) AWAY
701006-03	OFF-RD OPERATIONS, 2L, 2W, 15' (4.5 m) TO 24" (600 mm) FROM PAVEMENT EDGE
701011-02	OFF-RD MOVING OPERATIONS, 2L, 2W, DAY ONLY
701101-02	OFF-ROAD OPERATIONS, MULTI LANE, 15' (4.5 m) TO 24" (600 mm) FROM PAVEMENT EDGE
701106-02	OFF-RD OPERATIONS, MULTILANE, MORE THAN 15' (4.5 m) AWAY
701301-04	LANE CLOSURE, 2L, 2W, SHORT TIME OPERATIONS
701411-08	LANE CLOSURE, MULTILANE, AT ENTRANCE OR EXIT RAMP, FOR SPEEDS ≥ 45 MPH
701422-04	LANE CLOSURE, MULTILANE, FOR SPEEDS ≥ 45 MPH TO 55 MPH
701426-04	LANE CLOSURE, MULTILANE, INTERMITTENT OR MOVING OPER., FOR SPEEDS ≥ 45 MPH
701427	LANE CLOSURE, MULTILANE, INTERMITTENT OR MOVING OPER., FOR SPEEDS ≤ 40 MPH
701456-02	PARTIAL EXIT RAMP CLOSURE FREEWAY / EXPRESSWAY
701606-08	URBAN LANE CLOSURE, MULTILANE, 2W WITH MOUNTABLE MEDIAN
701901-02	TRAFFIC CONTROL DEVICES

GENERAL NOTES

- BEFORE STARTING ANY EXCAVATIONS, THE CONTRACTOR SHALL CALL "J.U.L.I.E." AT 800-892-0123 OR "CUAN" (CHICAGO UTILITY ALERT NETWORK), 312-744-7000 FOR FIELD LOCATIONS OF BURIED ELECTRIC, TELEPHONE AND GAS FACILITIES (48 HOUR NOTIFICATION IS REQUIRED).
- THE CONTRACTOR SHALL COORDINATE CONSTRUCTION ACTIVITIES WITH UTILITY COMPANIES AND LOCAL AGENCIES.
- THE CONTRACTOR WILL NOT BE ALLOWED TO SET UP A YARD OR FIELD OFFICE ON STATE PROPERTY WITHOUT WRITTEN PERMISSION FROM THE DEPARTMENT.
- THE RESIDENT ENGINEER SHALL CONTACT THE TRAFFIC CONTROL SUPERVISOR AT (847) 705-4470 A MINIMUM OF 72 HOURS PRIOR TO THE PLACEMENT OF ANY TEMPORARY TRAFFIC CONTROL DEVICES.
- IMPROVEMENTS ARE NOT PLANNED AT LOCATION 17. SHEETS FOR THIS LOCATION ARE NOT INCLUDED.
- FOR WORK OUTSIDE THE LIMITS OF BRIDGE APPROACH PAVEMENT, ALL REFERENCES IN THE HIGHWAY STANDARDS AND STANDARD SPECIFICATIONS FOR REINFORCEMENT, DOWEL BARS AND TIE BARS IN PAVEMENT, SHOULDERS, CURB, GUTTER, COMBINATION CURB AND GUTTER AND MEDIAN, AND CHAIR SUPPORTS FOR CRC PAVEMENT, SHALL BE EPOXY COATED, UNLESS NOTED ON THE PLAN.

7. THE CONTRACTOR SHALL ONLY PERFORM WORK ON ONE SIDE OF THE ROADWAY AT ANY TIME.

8. THE CONTRACTOR SHALL SUSPEND GUARDRAIL REMOVAL OPERATIONS WHENEVER THE AMOUNT OF REMOVED GUARDRAIL EXCEEDS TWO DAYS' PRODUCTION TO REPLACE THE GUARDRAIL.

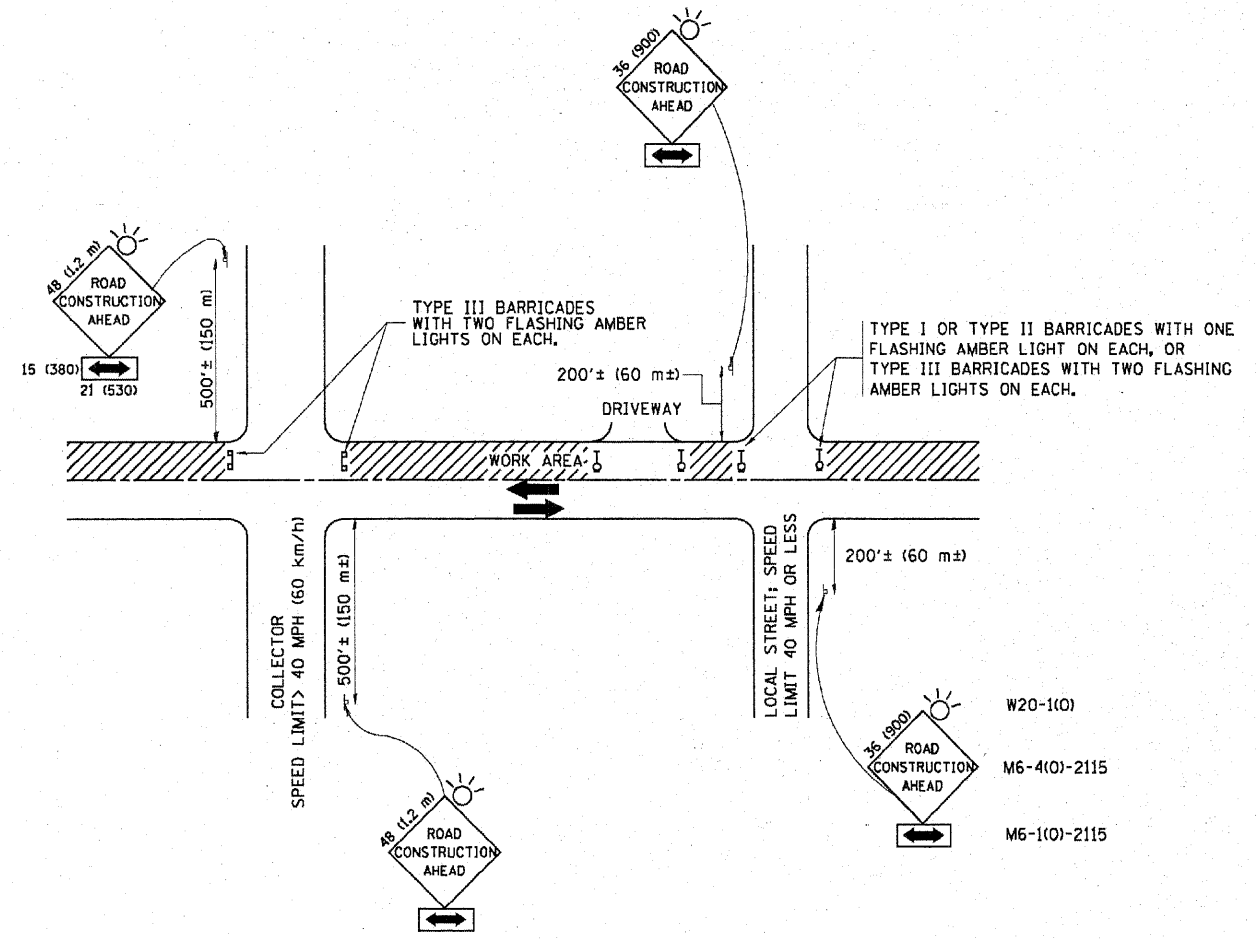
IMPROVEMENTS	
	AIR VOIDS
SHOULDER, 6"	4% @ 50 Gyr.
HMA SHOULDER (HMA BINDER IL-19mm) (2 LIFTS)	4% @ 50 Gyr.

THE AC TYPE FOR POLYMERIZED HMA MIXTURES SHALL BE "SBS/SBR PG 76-22" AND FOR NON-POLYMERIZED HMA THE "AC TYPE" SHALL BE "PG 64-22" UNLESS MODIFIED BY DISTRICT ONE SPECIAL PROVISIONS.

FOR PERCENT OF RAP SEE DISTRICT ONE SPECIAL PROVISIONS.

THE UNIT WEIGHT USED TO CALCULATE ALL HMA SURFACE MIXTURE QUANTITIES IS 112 LBS/SQ YD/IN.

Rev. 2-23-12



TRAFFIC CONTROL AND PROTECTION FOR SIDE ROADS, INTERSECTIONS, AND DRIVEWAYS

NOTES:

A. FOR NO LANE RESTRICTION ON THE SIDE ROAD OR DRIVEWAYS

1. SIDE ROAD WITH A SPEED LIMIT OF 40 MPH (60 km/h) OR LESS AS SHOWN ON THE DRAWING AND AS DIRECTED BY THE ENGINEER:

a) ONE ROAD CONSTRUCTION AHEAD SIGN 36 x 36 (900x900) WITH A FLASHER AND FLAG MOUNTED ON IT APPROXIMATELY 200' (60 m) IN ADVANCE OF THE MAIN ROUTE.

b) THE CLOSED PORTION OF THE MAIN ROUTE SHALL BE PROTECTED BY BLOCKING WITH TYPE I, TYPE II OR TYPE III BARRICADES, 1/3 OF THE CROSS SECTION OF THE CLOSED PORTION.

2. SIDE ROAD WITH A SPEED LIMIT GREATER THAN 40 MPH (60 km/h) AS SHOWN ON THE DRAWING AND AS DIRECTED BY THE ENGINEER:

a) ONE ROAD CONSTRUCTION AHEAD SIGN 48 x 48 (1.2 m x 1.2 m) WITH A FLASHER MOUNTED ON IT APPROXIMATELY 500' (150 m) IN ADVANCE OF THE MAIN ROUTE.

b) THE CLOSED PORTION OF THE MAIN ROUTE SHALL BE PROTECTED BY BLOCKING WITH TYPE III BARRICADES, 1/2 OF THE CROSS SECTION OF THE CLOSED PORTION.

3. WHEN THE SIDE ROAD LIES BETWEEN THE BEGINNING OF THE MAINLINE SIGNING AND THE WORK ZONE, A SINGLE HEADED ARROW (M6-1) SHALL BE USED IN LIEU OF THE DOUBLE HEADED ARROW (M6-4).

B. FOR A LANE CLOSURE ON A SIDE ROAD OR DRIVEWAY:

USE APPLICABLE PORTIONS OF THE TYPICAL APPLICATION OF TRAFFIC CONTROL DEVICES (STD. T01501, STD. T01606 OR THE APPROPRIATE STANDARD). THE SPACING OF SIGNS AND BARRICADES SHALL BE ADJUSTED FOR FIELD CONDITIONS AS DIRECTED BY THE ENGINEER. THE DIRECTIONAL ARROW SHALL BE COVERED OR REMOVED WHEN NO LONGER CONSISTENT WITH THE SIDE ROAD LANE CLOSURE.

C. ADVANCE WARNING SIGNS ARE TO BE OMITTED ON DRIVEWAY UNLESS OTHERWISE NOTED.

D. THE TRAFFIC CONTROL AND PROTECTION FOR SIDE ROADS, INTERSECTIONS, AND DRIVEWAYS SHALL BE INCIDENTAL TO THE COST OF SPECIFIED TRAFFIC CONTROL STANDARDS OR ITEMS.

Added 2-23-12

All dimensions are in millimeters (inches) unless otherwise shown.

USER NAME = Plotted by Fred 576	DESIGNED - GRE	REVISED -
PLOT SCALE = 2,000' / IN.	DRAWN - GRE	REVISED -
PLOT DATE = 2/15/2012	CHECKED - ST	REVISED -
	DATE - 12/20/11	REVISED -

F.A.P. RTE.	SECTION	COUNTY	TOTAL SHEETS	SHEET NO.
	2011-093-GRR	COOK	26	26A
			CONTRACT NO. 60R21	