

STATE OF ILLINOIS  
DEPARTMENT OF TRANSPORTATION  
DIVISION OF HIGHWAYS

**PROPOSED  
HIGHWAY PLANS**

VARIOUS ROUTES  
SECTION: 2011-093-GRR  
VARIOUS LOCATIONS IN CENTRAL COOK COUNTY  
GUARDRAIL IMPROVEMENTS  
PROJECT: HSIP-0005(876)  
COOK COUNTY  
C-91-048-12

F.A. RTE.	SECTION	COUNTY	TOTAL SHEETS	SHEET NO.
*	2011-093-GRR	COOK	26	1
		ILLINOIS	CONTRACT NO. 60R21	

FOR INDEX OF SHEETS, SEE SHEET NO. 2

**TRAFFIC DATA**

31st STREET OVER THE DES PLAINES RIVER  
EXISTING ADT = 11,600 (2010)  
SPEED LIMIT = 35 MPH

87th STREET BETWEEN IL ROUTE 50 AND PULASKI ROAD  
EXISTING ADT = 20,000 (2010)  
SPEED LIMIT = 35 MPH

87th STREET BETWEEN WESTERN AVENUE AND DAMEN AVENUE  
EXISTING ADT = 31,800 (2010)  
SPEED LIMIT = 35 MPH

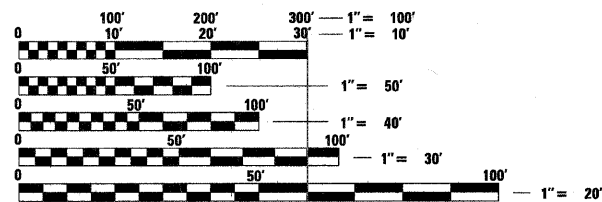
ARCHER AVENUE AT IL ROUTE 171  
EXISTING ADT = 14,200 - 17,700 (2010)  
SPEED LIMIT = 45 MPH

IL ROUTE 171 AT I-55  
EXISTING ADT = 36,300 (2010)  
SPEED LIMIT = 50 MPH

43rd STREET (JOLIET ROAD) OVER THE DES PLAINES RIVER  
EXISTING ADT = 12,700 (2010)  
SPEED LIMIT = 40 MPH

WILLOW SPRINGS ROAD / GILBERT AVENUE OVER THE  
SANITARY AND SHIP CANAL  
EXISTING ADT = 12,900 (2010)  
SPEED LIMIT = 40 MPH

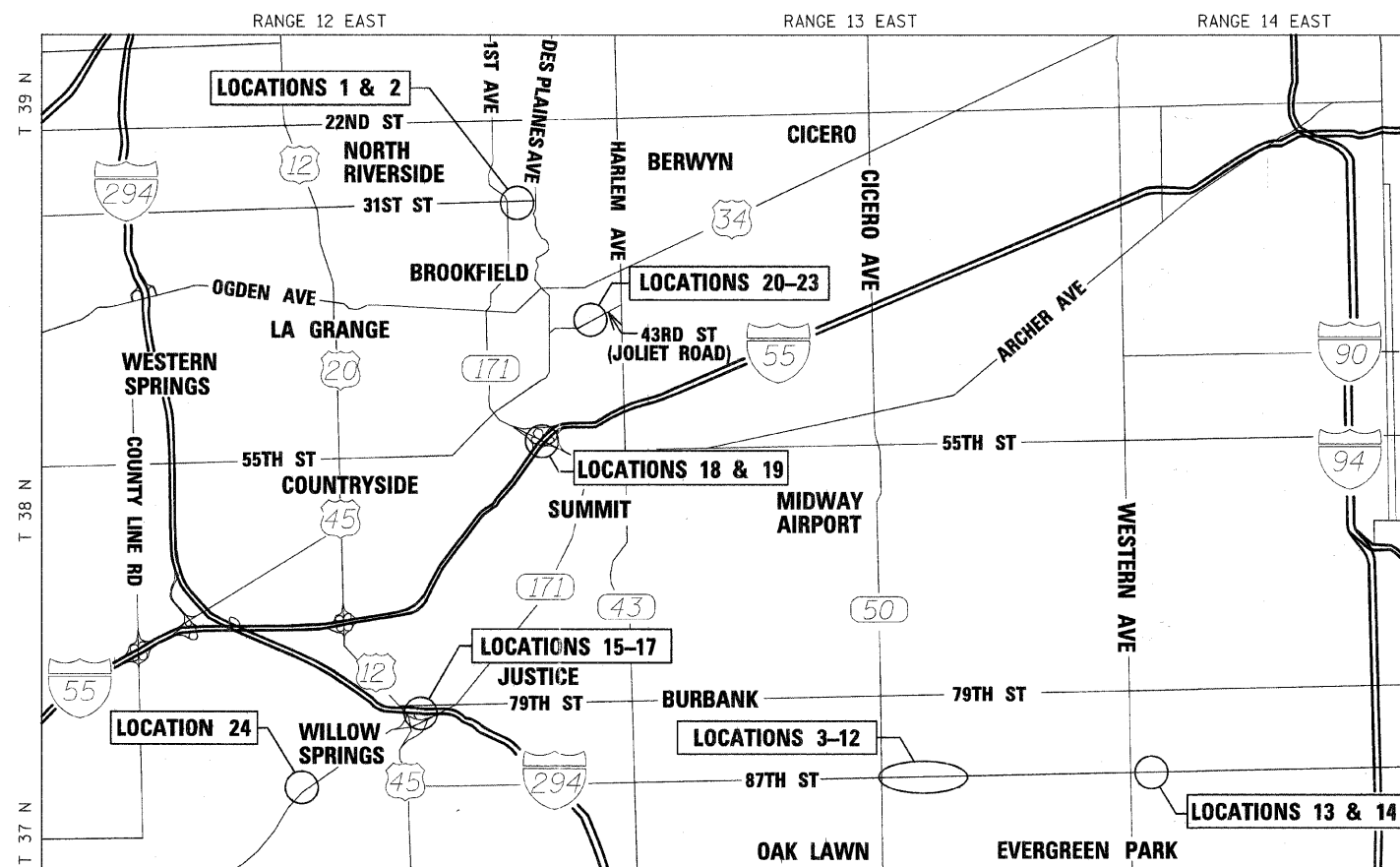
**THIS PROJECT IS LOCATED IN THE  
CITIES OF CHICAGO AND HOMETOWN  
AND IN THE VILLAGES OF JUSTICE,  
LYONS, RIVERSIDE, SUMMIT, AND WILLOW  
SPRINGS**



FULL SIZE PLANS HAVE BEEN PREPARED USING STANDARD  
ENGINEERING SCALES. REDUCED SIZED PLANS WILL NOT  
CONFORM TO STANDARD SCALES. IN MAKING MEASUREMENTS  
ON REDUCED PLANS, THE ABOVE SCALES MAY BE USED.

J.U.L.I.E.  
JOINT UTILITY LOCATION INFORMATION FOR EXCAVATION  
1-800-892-0123  
OR 811  
C.U.A.N.  
CHICAGO UTILITY ALERT NETWORK  
(312) 744-7000

PROJECT ENGINEER: SHIRAZ TARIQUE (LIN) 630-323-5168  
PROJECT MANAGER: KEN ENG (IDOT) 847-705-4247  
CONTRACT NO. 60R21



CALUMET, LYONS, PALOS, RIVERSIDE, WORTH TOWNSHIPS



PREPARED BY:  
LIN ENGINEERING, LTD.  
WESTMONT, ILLINOIS  
(630) 323-5168

*Jeffrey Elfers*  
Expires 11-30-13

062-063942  
LICENSED  
PROFESSIONAL  
ENGINEER  
OF  
ILLINOIS  
**SEAL**

STATE OF ILLINOIS  
DEPARTMENT OF TRANSPORTATION  
DIVISION OF HIGHWAYS

SUBMITTED DECEMBER 15, 2011

Diane M. O'Malley DEPUTY DIRECTOR OF HIGHWAYS, REGION ENGINEER

February 3, 2012

John D. Baranowski, P.E. acting ENGINEER OF DESIGN AND ENVIRONMENT

February 3, 2012

William R. Frey, Jr. acting DIRECTOR OF HIGHWAYS, CHIEF ENGINEER

**PRINTED BY THE AUTHORITY  
OF THE STATE OF ILLINOIS**