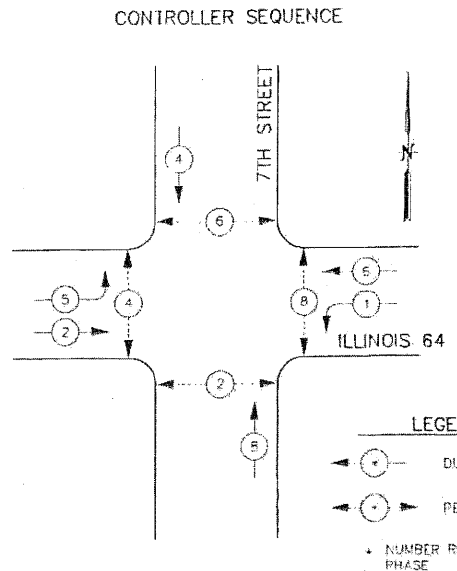
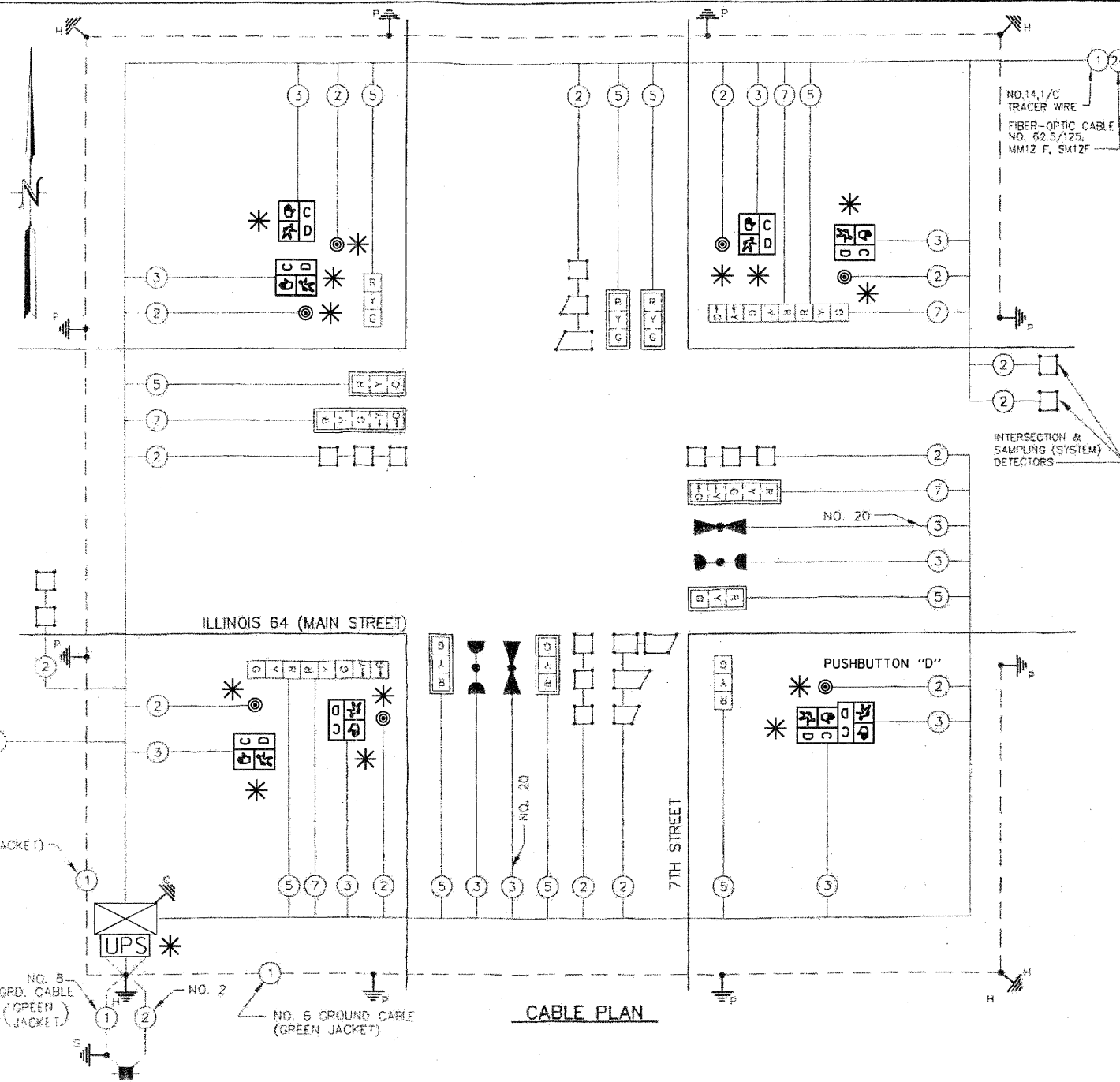
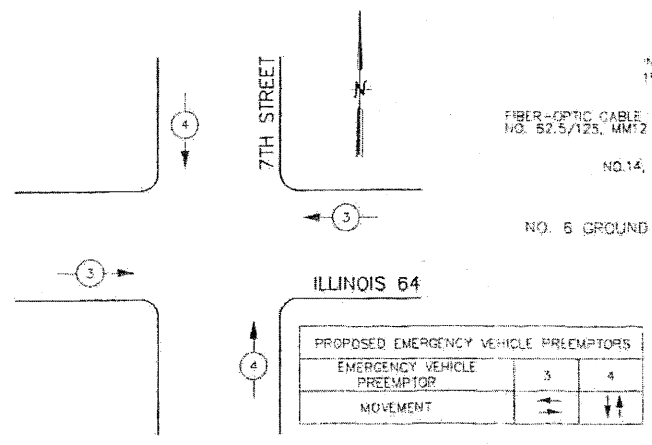


F.A.P. ROUTE	COUNTY SECTION	COUNTY	TOTAL SHEETS	SHEET NO.
307	STATE SECTION	KANE	17	8
TRAFFIC SIGNALS				
F.H.W.A. REG.5 ILLINOIS PROJECT STPM-				



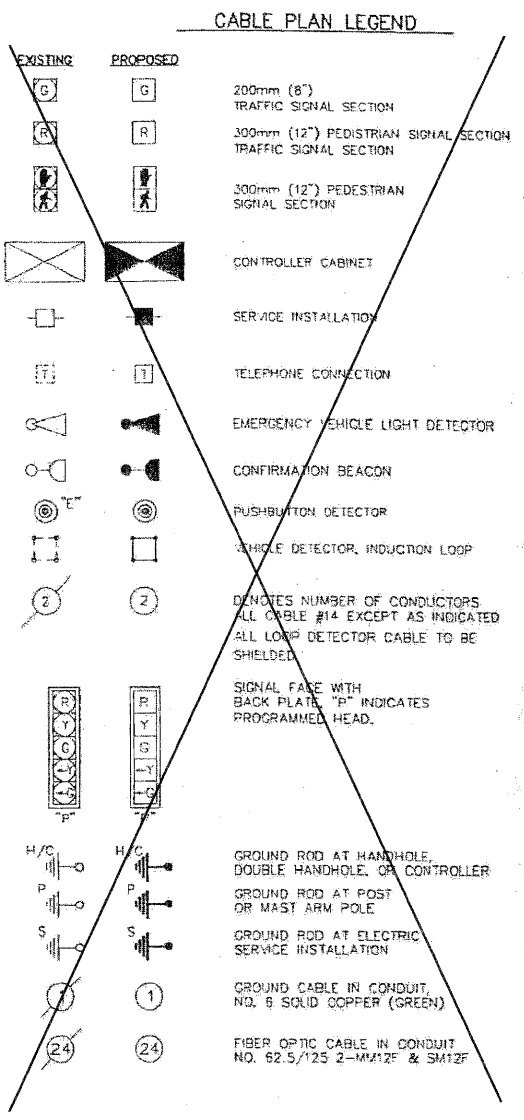
PHASE DESIGNATION DIAGRAM

EMERGENCY VEHICLE PREEMPTION SEQUENCE



CABLE PLAN

NOTE:
 PUSHBUTTON "D" SHALL PLACE A CALL IN PHASES 2 AND 8.



* SCHEDULE OF QUANTITIES

ITEM	UNIT	QUANTITY
MAINTENANCE OF EXISTING TRAFFIC SIGNAL INSTALLATION	EACH	1
PEDESTRIAN SIGNAL HEAD, LED, 1-FACE, BRACKET MOUNTED WITH COUNTDOWN TIMER	EACH	6
PEDESTRIAN SIGNAL HEAD, LED, 2-FACE, BRACKET MOUNTED WITH COUNTDOWN TIMER	EACH	1
PEDESTRIAN PUSH-BUTTON	EACH	7
REMOVE EXISTING TRAFFIC SIGNAL EQUIPMENT	EACH	1
UNINTERRUPTIBLE POWER SUPPLY SPECIAL	EACH	1

* INDICATES WORK FOR CONTRACT 60R33

RWA	08/2011	ILLINOIS DEPARTMENT OF TRANSPORTATION
CABLE PLAN		
PHASE DESIGNATION DIAGRAM		
SCHEDULE OF QUANTITIES		
ILLINOIS 64 & 7TH STREET		
NAME	DATE	SCALE: NONE
REVISIONS		DATE: 3-10-00
		DRAWN BY: AMS
		CHECKED BY: DMH

* RESTORATION OF WORK AREA: RESTORATION OF THE TRAFFIC SIGNAL WORK AREA SHALL BE INCLUDED IN THE RELATED PAY ITEM SUCH AS FOUNDATION, CONDUIT, HANDHOLE, TRENCH AND BACKFILL, ETC., AND NO EXTRA COMPENSATION SHALL BE ALLOWED. ALL ROADWAY SURFACES SUCH AS SHOULDERS, MEDIAN, SIDEWALKS, PAVEMENT ETC. SHALL BE REPLACED IN KIND. ALL DAMAGE TO MOWED LAWNS SHALL BE REPLACED WITH AN APPROVED SOD, AND ALL DAMAGE TO UNMOWED FIELDS SHALL BE SEEDD IN ACCORDANCE WITH STANDARD SPECIFICATIONS 252 AND 250 RESPECTIVELY.