



F.A.P. RTE.	SECTION	COUNTY	TOTAL SHEETS	SHEET NO.
307	1288-R-2	KANE	128	113
STA.		TO STA.		
FED. ROAD DIST. NO.		ILLINOIS FED. AID PROJECT		
C-91-236-87				

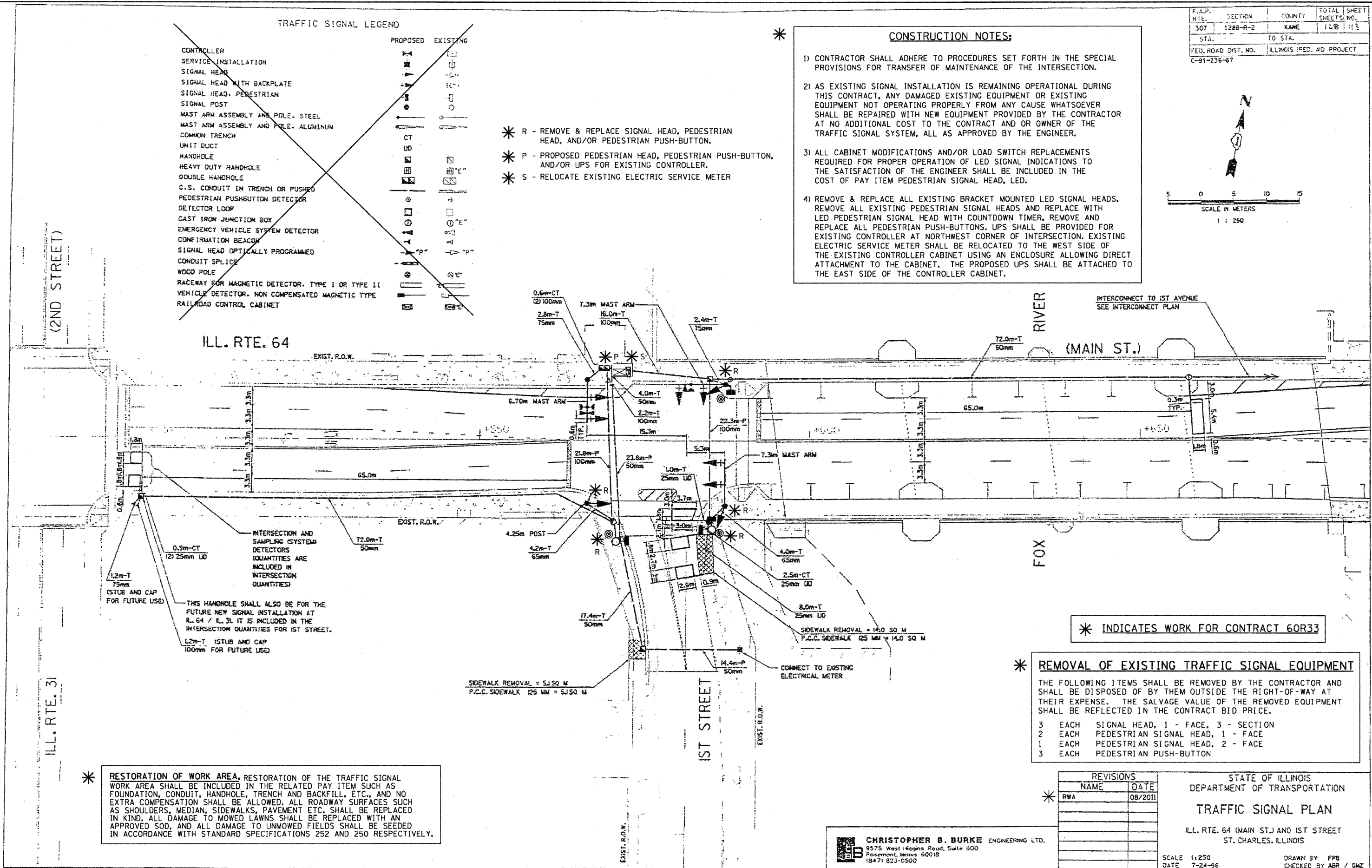
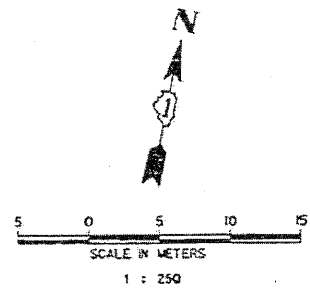
TRAFFIC SIGNAL LEGEND

	PROPOSED	EXISTING
CONTROLLER	[Symbol]	[Symbol]
SERVICE INSTALLATION	[Symbol]	[Symbol]
SIGNAL HEAD	[Symbol]	[Symbol]
SIGNAL HEAD WITH BACKPLATE	[Symbol]	[Symbol]
SIGNAL HEAD, PEDESTRIAN	[Symbol]	[Symbol]
SIGNAL POST	[Symbol]	[Symbol]
MAST ARM ASSEMBLY AND POLE, STEEL	[Symbol]	[Symbol]
MAST ARM ASSEMBLY AND POLE, ALUMINUM	[Symbol]	[Symbol]
COMMON TRENCH	[Symbol]	[Symbol]
UNIT DUCT	[Symbol]	[Symbol]
HANDHOLE	[Symbol]	[Symbol]
HEAVY DUTY HANDHOLE	[Symbol]	[Symbol]
DOUBLE HANDHOLE	[Symbol]	[Symbol]
G.S. CONDUIT IN TRENCH OR PUSHED	[Symbol]	[Symbol]
PEDESTRIAN PUSHBUTTON DETECTOR	[Symbol]	[Symbol]
DETECTOR LOOP	[Symbol]	[Symbol]
CAST IRON JUNCTION BOX	[Symbol]	[Symbol]
EMERGENCY VEHICLE SYSTEM DETECTOR	[Symbol]	[Symbol]
CONFIRMATION BEACON	[Symbol]	[Symbol]
SIGNAL HEAD OPTICALLY PROGRAMMED	[Symbol]	[Symbol]
CONDUIT SPLICE	[Symbol]	[Symbol]
WOOD POLE	[Symbol]	[Symbol]
RACEWAY FOR MAGNETIC DETECTOR, TYPE I OR TYPE II	[Symbol]	[Symbol]
VEHICLE DETECTOR, NON COMPENSATED MAGNETIC TYPE	[Symbol]	[Symbol]
RAILROAD CONTROL CABINET	[Symbol]	[Symbol]

- * R - REMOVE & REPLACE SIGNAL HEAD, PEDESTRIAN HEAD, AND/OR PEDESTRIAN PUSH-BUTTON.
- * P - PROPOSED PEDESTRIAN HEAD, PEDESTRIAN PUSH-BUTTON, AND/OR UPS FOR EXISTING CONTROLLER.
- * S - RELOCATE EXISTING ELECTRIC SERVICE METER

CONSTRUCTION NOTES:

- 1) CONTRACTOR SHALL ADHERE TO PROCEDURES SET FORTH IN THE SPECIAL PROVISIONS FOR TRANSFER OF MAINTENANCE OF THE INTERSECTION.
- 2) AS EXISTING SIGNAL INSTALLATION IS REMAINING OPERATIONAL DURING THIS CONTRACT, ANY DAMAGED EXISTING EQUIPMENT OR EXISTING EQUIPMENT NOT OPERATING PROPERLY FROM ANY CAUSE WHATSOEVER SHALL BE REPAIRED WITH NEW EQUIPMENT PROVIDED BY THE CONTRACTOR AT NO ADDITIONAL COST TO THE CONTRACT AND OR OWNER OF THE TRAFFIC SIGNAL SYSTEM, ALL AS APPROVED BY THE ENGINEER.
- 3) ALL CABINET MODIFICATIONS AND/OR LOAD SWITCH REPLACEMENTS REQUIRED FOR PROPER OPERATION OF LED SIGNAL INDICATIONS TO THE SATISFACTION OF THE ENGINEER SHALL BE INCLUDED IN THE COST OF PAY ITEM PEDESTRIAN SIGNAL HEAD, LED.
- 4) REMOVE & REPLACE ALL EXISTING BRACKET MOUNTED LED SIGNAL HEADS, REMOVE ALL EXISTING PEDESTRIAN SIGNAL HEADS AND REPLACE WITH LED PEDESTRIAN SIGNAL HEAD WITH COUNTDOWN TIMER, REMOVE AND REPLACE ALL PEDESTRIAN PUSH-BUTTONS. UPS SHALL BE PROVIDED FOR EXISTING CONTROLLER AT NORTHWEST CORNER OF INTERSECTION. EXISTING ELECTRIC SERVICE METER SHALL BE RELOCATED TO THE WEST SIDE OF THE EXISTING CONTROLLER CABINET USING AN ENCLOSURE ALLOWING DIRECT ATTACHMENT TO THE CABINET. THE PROPOSED UPS SHALL BE ATTACHED TO THE EAST SIDE OF THE CONTROLLER CABINET.



* INDICATES WORK FOR CONTRACT 60R33

*** REMOVAL OF EXISTING TRAFFIC SIGNAL EQUIPMENT**

THE FOLLOWING ITEMS SHALL BE REMOVED BY THE CONTRACTOR AND SHALL BE DISPOSED OF BY THEM OUTSIDE THE RIGHT-OF-WAY AT THEIR EXPENSE. THE SALVAGE VALUE OF THE REMOVED EQUIPMENT SHALL BE REFLECTED IN THE CONTRACT BID PRICE.

3	EACH	SIGNAL HEAD, 1 - FACE, 3 - SECTION
2	EACH	PEDESTRIAN SIGNAL HEAD, 1 - FACE
1	EACH	PEDESTRIAN SIGNAL HEAD, 2 - FACE
3	EACH	PEDESTRIAN PUSH-BUTTON

* RESTORATION OF WORK AREA, RESTORATION OF THE TRAFFIC SIGNAL WORK AREA SHALL BE INCLUDED IN THE RELATED PAY ITEM SUCH AS FOUNDATION, CONDUIT, HANDHOLE, TRENCH AND BACKFILL, ETC., AND NO EXTRA COMPENSATION SHALL BE ALLOWED. ALL ROADWAY SURFACES SUCH AS SHOULDERS, MEDIAN, SIDEWALKS, PAVEMENT ETC. SHALL BE REPLACED IN KIND. ALL DAMAGE TO MOWED LAWNS SHALL BE REPLACED WITH AN APPROVED SOD, AND ALL DAMAGE TO UNMOWED FIELDS SHALL BE SEEDD IN ACCORDANCE WITH STANDARD SPECIFICATIONS 252 AND 250 RESPECTIVELY.

REVISIONS	
NAME	DATE
RWA	08/2011

STATE OF ILLINOIS
 DEPARTMENT OF TRANSPORTATION
TRAFFIC SIGNAL PLAN
 ILL. RTE. 64 (MAIN ST.) AND 1ST STREET
 ST. CHARLES, ILLINOIS

CHRISTOPHER B. BURKE ENGINEERING LTD.
 9575 West Higgins Road, Suite 600
 Rosemont, Illinois 60018
 (847) 823-0500

SCALE 1:250
 DATE 7-24-96
 DRAWN BY FFB
 CHECKED BY ABR / GMZ

FILE NAME =	USER NAME = USERNAME	DESIGNED - DW	REVISED -	STATE OF ILLINOIS DEPARTMENT OF TRANSPORTATION	IL ROUTE 64 (MAIN ST) AT 1st STREET TRAFFIC SIGNAL MODERNIZATION PLAN	SCALE: N.T.S.	SHEET NO. 1 OF 2 SHEETS	STA. TO STA.	F.A.P. RTE.	SECTION	COUNTY	TOTAL SHEETS	SHEET NO.
ka:\projects\11043\design\sheet files\164pro1stdgn		DRAWN - JDH	REVISED -						307	2011-100-TS	KANE	23	15
PLOT SCALE = 28.0000' / IN.		CHECKED - KMM	REVISED -						CONTRACT NO. 60R33				
PLOT DATE = 12/14/2011		DATE -	REVISED -						ILLINOIS FED. AID PROJECT				