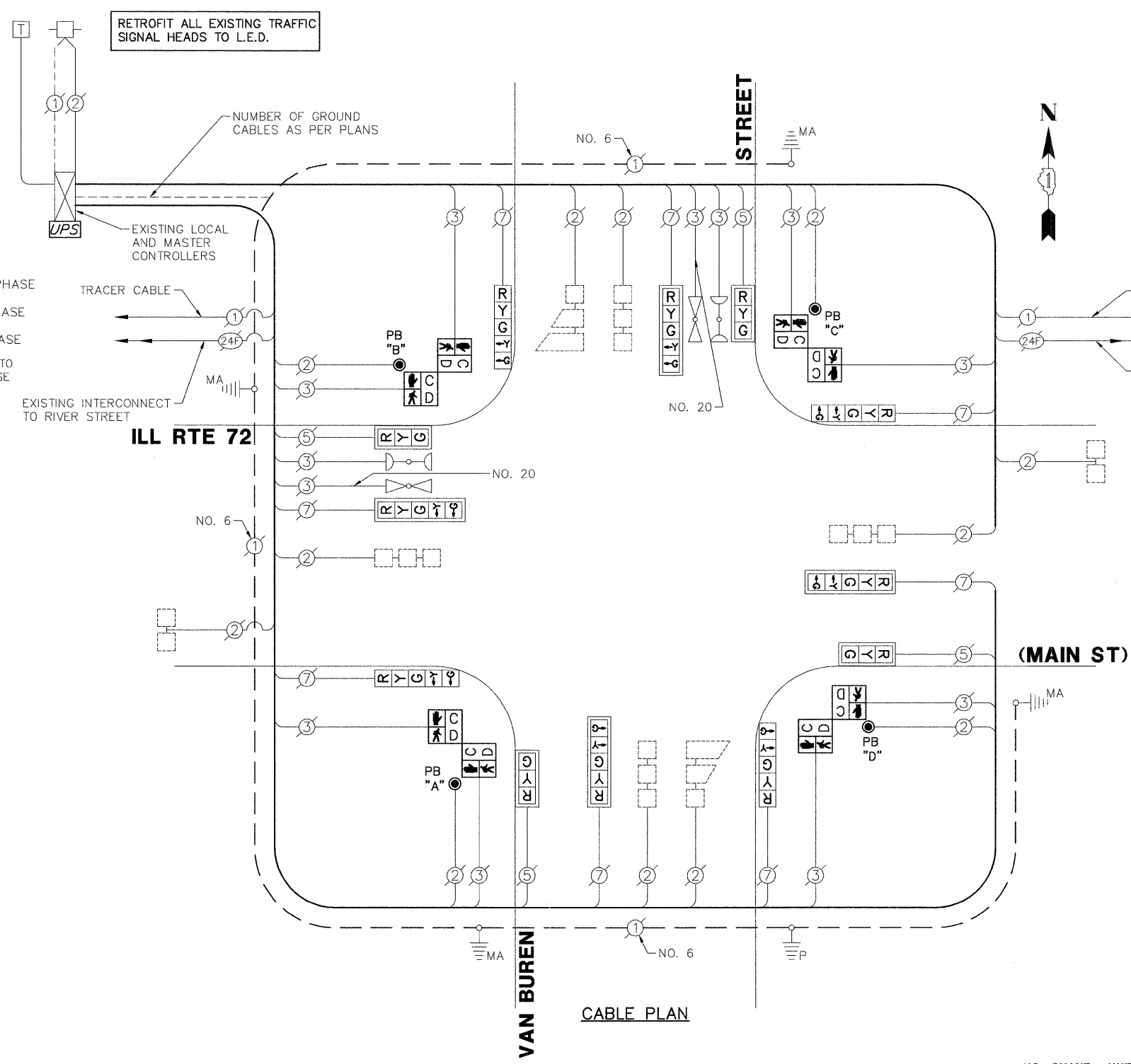


**EXISTING EMERGENCY VEHICLE PREEMPTORS**

EMERGENCY VEHICLE PREEMPTOR	3	4
MOVEMENT	←	→



**NOTE:**

PUSH BUTTON "A" SHALL PLACE A CALL IN PHASES 2 AND 4

PUSH BUTTON "B" SHALL PLACE A CALL IN PHASES 4 AND 6

PUSH BUTTON "C" SHALL PLACE A CALL IN PHASES 6 AND 8

PUSH BUTTON "D" SHALL PLACE A CALL IN PHASES 2 AND 8

THE FOLLOWING ITEMS SHALL BE REMOVED BY THE CONTRACTOR AND SHALL BE DISPOSED OF BY THEM OUTSIDE THE RIGHT-OF-WAY AT THEIR EXPENSE. THE SALVAGE VALUE OF THE REMOVED EQUIPMENT SHALL BE REFLECTED IN THE CONTRACT BID PRICE.

8 EACH PEDESTRIAN SIGNAL HEAD

4 EACH PEDESTRIAN PUSH-BUTTON

**I.D.O.T. TRAFFIC SIGNAL INSTALLATION ELECTRICAL SERVICE REQUIREMENTS**

TYPE	NO. LAMPS	WATTAGE		% OPERATION	TOTAL WATTAGE
		INCAND.	L.E.D.		
SIGNAL (RED)	12	135	17	0.50	102.0
SIGNAL (YELLOW)	12	135	25	0.25	25.0
SIGNAL (GREEN)	12	135	15	0.25	45.0
ARROW	16	135	12	0.10	19.2
PED. SIGNAL	8	90	25	1.00	200.0
CONTROLLER	1	-	100	1.00	100.0
LUMINAIRE	-	-	250	0.50	-
L.E.D. ST. NAME SIGN	-	-	64	0.50	-
VIDEO SYSTEM	-	-	150	1.00	-
BATTERY BACKUP	1	-	25	1.00	25.0
ILLUMINATED SIGN	-	-	25	0.05	-
<b>TOTAL =</b>					<b>566.2</b>

ENERGY COSTS - BILLED TO: VILLAGE OF EAST DUNDEE  
 (ADDRESS) 120 BARRINGTON AVENUE  
 (ADDRESS) EAST DUNDEE, IL 60118

ENERGY SUPPLY - CONTACT: \_\_\_\_\_  
 PHONE: \_\_\_\_\_  
 COMPANY: \_\_\_\_\_

**SCHEDULE OF QUANTITIES**  
ILL RTE 72 (MAIN ST) AT VAN BUREN STREET

NO.	QUANT.	UNIT	DESCRIPTION
1.	1	EACH	MAINTENANCE OF EXISTING TRAFFIC SIGNAL INSTALLATION
2.	4	EACH	PEDESTRIAN SIGNAL HEAD, LED, 2-FACE, BRACKET MOUNTED WITH COUNTDOWN TIMER
3.	1	EACH	MODIFY EXISTING CONTROLLER CABINET
4.	1	EACH	REMOVE EXISTING TRAFFIC SIGNAL EQUIPMENT
5.	1	EACH	UNINTERRUPTIBLE POWER SUPPLY, SPECIAL
6.	4	EACH	SIGNAL HEAD, LED, 1-FACE, 3-SECTION, MAST ARM MOUNTED, RETROFIT
7.	4	EACH	SIGNAL HEAD, LED, 1-FACE, 5-SECTION, MAST ARM MOUNTED, RETROFIT
8.	4	EACH	PEDESTRIAN PUSH-BUTTON, NON-LATCHING
9.	4	EACH	SIGNAL HEAD, LED, 1-FACE, 5-SECTION, BRACKET MOUNTED, RETROFIT