

F.A.P. RTE.	SECTION	COUNTY	TOTAL SHEETS	SHEET NO.
856	01-00170-26-TL	WILL	171	1
CONTRACT NO: 63570				

STATE OF ILLINOIS
DEPARTMENT OF TRANSPORTATION
DIVISION OF HIGHWAYS

PLANS FOR PROPOSED FEDERAL AID HIGHWAY

DESIGN DESIGNATION (WEBER ROAD)
2700 (28) ARTERIAL
DESIGN DESIGNATION (RENWICK ROAD)
1400 (28) ARTERIAL

TRAFFIC DATA

2002 ADT = 20,260 (WEBER ROAD)
2002 ADT = 10,430 (RENWICK ROAD)

2030 ADT = 36,000 (WEBER ROAD)
2030 ADT = 18,680 (RENWICK ROAD)

SPEED LIMIT

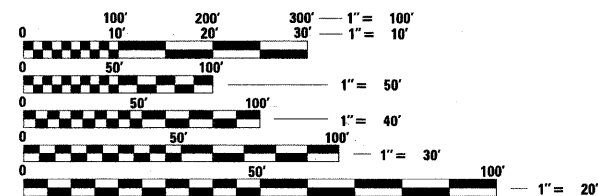
WEBER ROAD = 45 MPH
RENWICK ROAD = 45 MPH

**FAP ROUTE 856 (WEBER ROAD) (CH 88) AT
FAP ROUTE 351 (RENWICK ROAD) (CH 36)
INTERSECTION IMPROVEMENT, TRAFFIC SIGNAL MODERNIZATION,
DRAINAGE IMPROVEMENT AND LIGHTING IMPROVEMENT
WILL COUNTY
C-91-162-03**

**SECTION 01-00170-26-TL
PROJECT M-CMF-0005(409)**

FOR INDEX OF SHEETS, SEE SHEET NO. 2

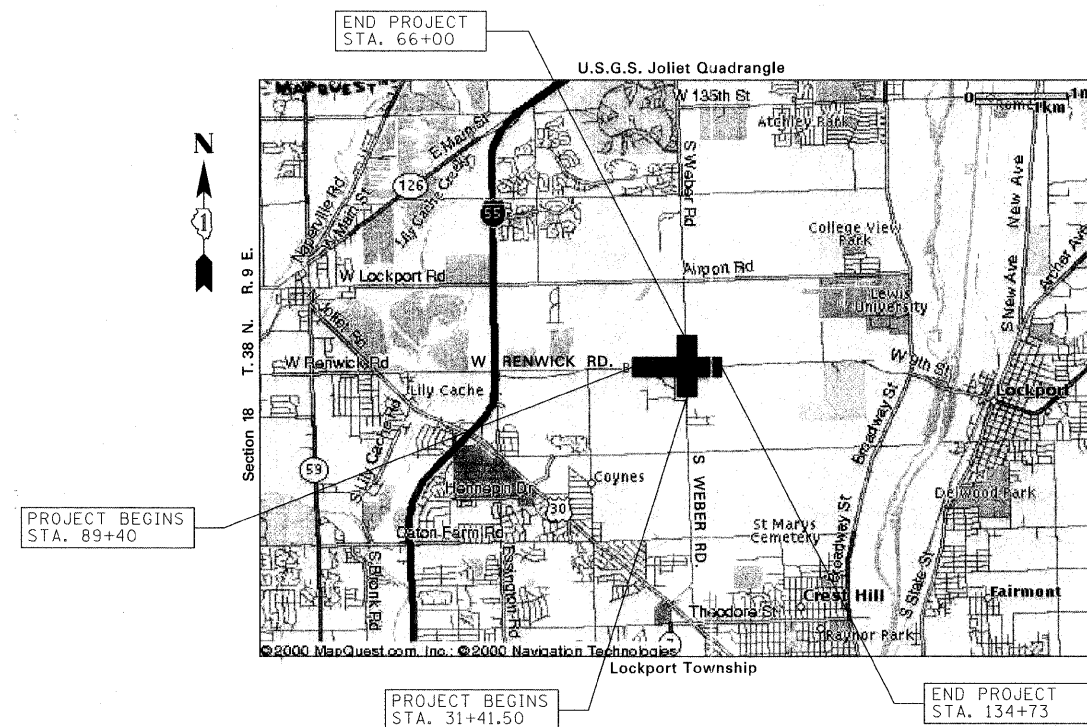
**PROJECT LOCATED IN
UNINCORPORATED WILL COUNTY,
VILLAGE OF ROMEVILLE, AND
CITY OF CREST HILL**



FULL SIZE PLANS HAVE BEEN PREPARED USING STANDARD ENGINEERING SCALES. REDUCED SIZED PLANS WILL NOT CONFORM TO STANDARD SCALES. IN MAKING MEASUREMENTS ON REDUCED PLANS, THE ABOVE SCALES MAY BE USED.

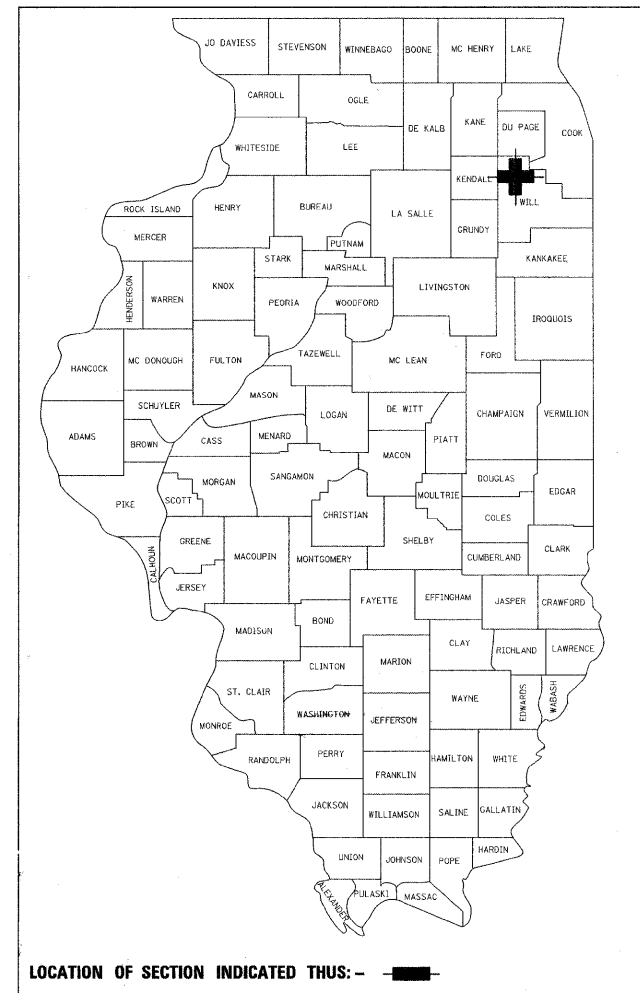
J.U.L.I.E.
JOINT UTILITY LOCATION INFORMATION FOR EXCAVATION
1-800-892-0123 OR 811

CONTRACT NO. 63570

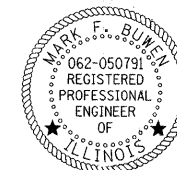


LOCATION MAP
NOT TO SCALE

TOTAL GROSS LENGTH OF PROJECT = 7992 FT. = 1.51 MI.
TOTAL NET LENGTH OF PROJECT = 7992 FT. = 1.51 MI.



LOCATION OF SECTION INDICATED THUS: - ■ -



Mark F. Buwen 08/22/11
MARK F. BUWEN, P.E. DATE
LICENSE EXPIRES: NOVEMBER 30, 2011
CONSULTANT PROJECT MANAGER



Jeffrey J. Sandberg 8/23/11
JEFFREY J. SANDBERG, P.E. DATE
LICENSE EXPIRES: NOVEMBER 30, 2011
FOR SHEETS: 89-106



Richard W. Hassman 8/22/2011
RICHARD W. HASSMAN, P.E. DATE
LICENSE EXPIRES: NOVEMBER 30, 2011
FOR SHEETS: 114-115

STATE OF ILLINOIS DEPARTMENT OF TRANSPORTATION DIVISION OF HIGHWAYS	
Approved	<i>August 25TH</i> 20 11
Passed	<i>SEPTEMBER 2</i> 20 11 <i>Chet</i> District I Engineer of Local Roads & Streets
Releasing for Bid Based on Limited Review	<i>SEPTEMBER 2</i> 20 11 <i>Diane M. O'Keefe</i> Deputy Director of Highways, Region I Engineer

**PRINTED BY THE AUTHORITY
OF THE STATE OF ILLINOIS**

DESIGN CONSULTANT:



303 E. WACKER DR., SUITE 900
CHICAGO, IL 60601
TEL: 312-373-7700
FAX: 312-938-1109

PROGRAM & OFFICE ENGINEER: CHARES F. RIDDLER, P.E. 847-705-4406 SCHAUMBURG, IL