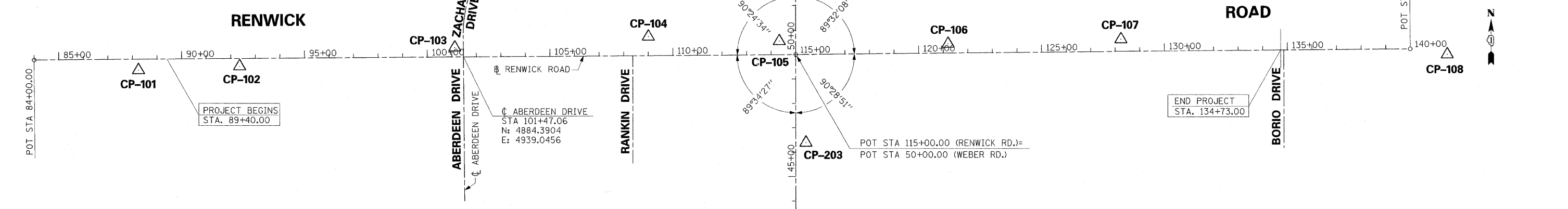
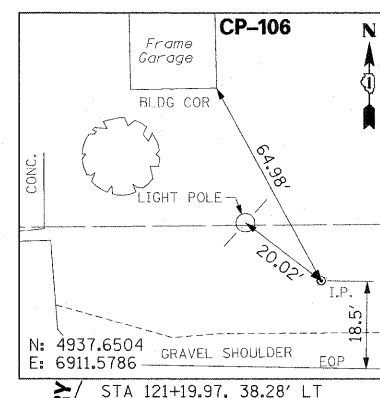
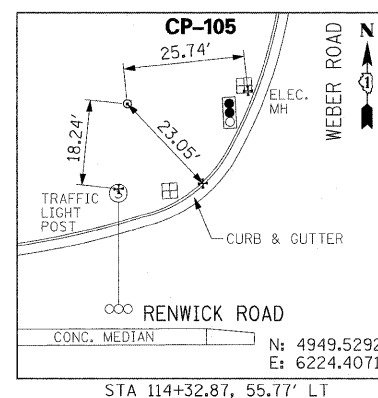
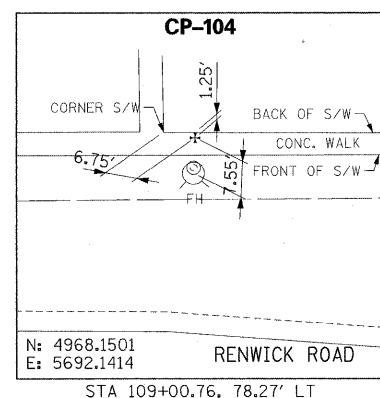
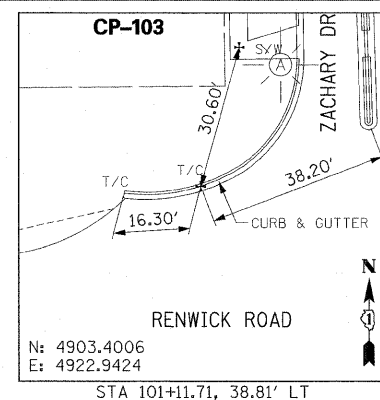
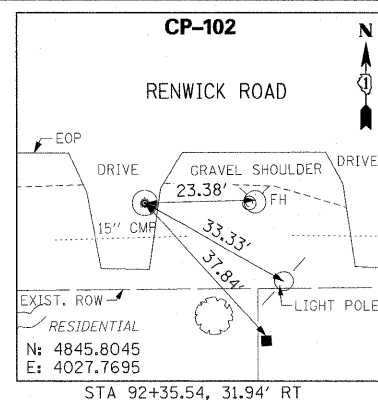
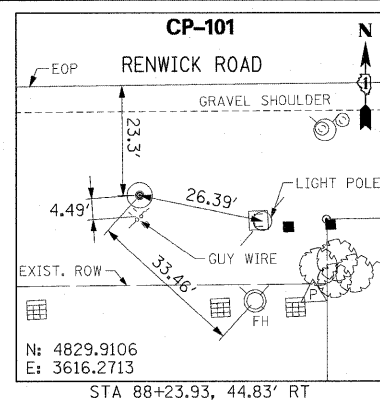
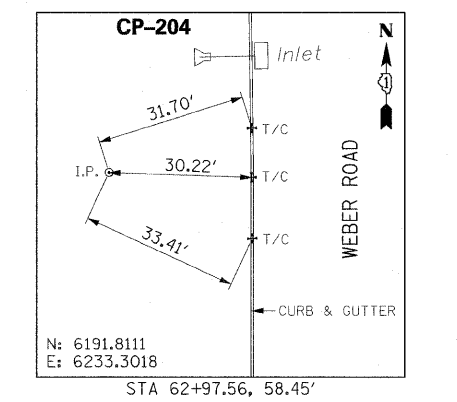
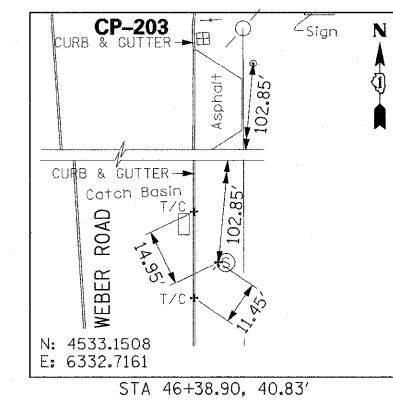
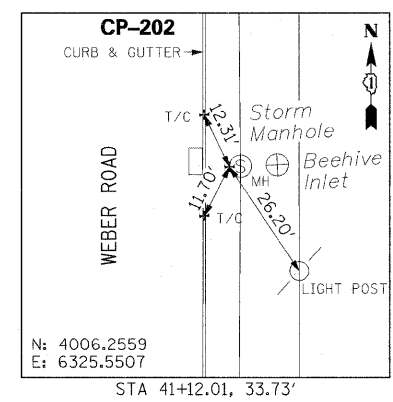
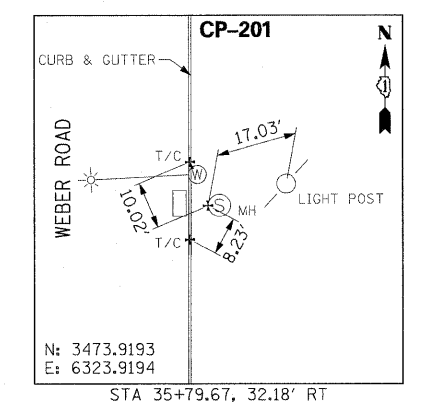
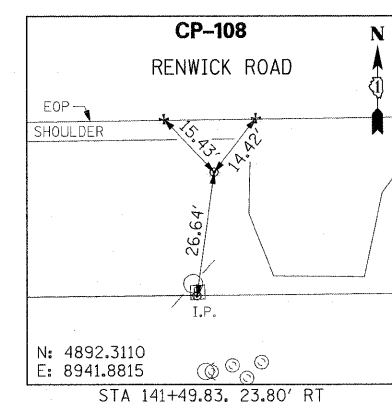
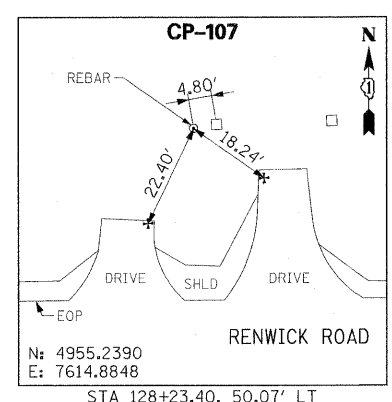
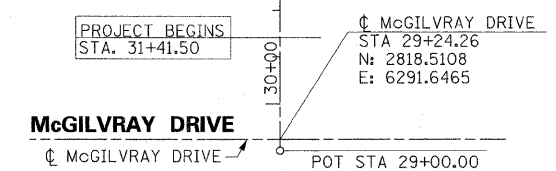


F.A.P. RTE.	SECTION	COUNTY	TOTAL SHEETS	SHEET NO.
856	01-00170-26-TL	WILL	171	14
STA.	TO STA.			
FED. ROAD DIST. NO.	ILLINOIS	FED. AID PROJECT		
CONTRACT NO: 63570				



- BENCHMARKS**
- BENCHMARK No. 2
STA. 41+12, 35' RT.
"+" Set In West Edge of Storm Manhole Rim.
Elevation = 643.78
 - BENCHMARK No. 3
STA. 46+39, 42' RT.
"+" Set In West Edge of Storm Manhole Rim.
Elevation = 649.86
 - BENCHMARK No. 3A
STA. 45+82, 85' RT.
Northwest Top Bolt on Hydrant.
Elevation = 651.19
 - BENCHMARK No. 4
STA. 48+68, 59' LT.
Square cut in Northeast Corner of Concrete Pad.
Elevation = 654.88
 - BENCHMARK No. 5
STA. 107+97, 48' RT.
Nail set in North face of Wood Service Pole 2 feet above grade.
Elevation = 649.40
 - BENCHMARK No. 6
STA. 101+71, 48' RT.
RR Spike in North face of Wood Service Pole.
Elevation = 643.97
 - BENCHMARK No. 7
STA. 92+65, 58' RT.
Square cut in Northeast corner of Ameritech Circuit Station No. 21120R.
Elevation = 638.43
 - BENCHMARK No. 8
STA. 88+48, 67' RT.
Southeast Flange Bolt on Hydrant.
Elevation = 633.99
 - BENCHMARK No. 9
STA. 122+42, 60' RT.
East Northeast Flange Bolt on Hydrant.
Elevation = 650.42
 - BENCHMARK No. 10
STA. 127+18, 47' RT.
RR Spike in North Face of Wood Service Pole.
Elevation = 647.30
 - BENCHMARK No. 11
STA. 131+22, 47' RT.
RR Spike in North Face of Wood Service Pole.
Elevation = 648.63
 - BENCHMARK No. 12
STA. 135+21, 47' RT.
RR Spike in North Face of Wood Service Pole.
Elevation = 644.74
 - BENCHMARK No. 13
STA. 145+71, 58' LT.
Southwest Corner of Brick Yard Light.
Elevation = 652.91
 - BENCHMARK No. 14
STA. 57+48, 49' RT.
RR Spike in West Face of Wood Service Pole.
Elevation = 648.67
 - BENCHMARK No. 15
STA. 61+40, 48' RT.
RR Spike in West Face of Wood Service Pole.
Elevation = 647.04
 - BENCHMARK No. 16
STA. 63+22, 28.5' RT.
"+" cut in T/C at Inlet.
Elevation = 646.34

ALL ELEVATIONS ARE BASED ON NGVD1929.



REVISIONS	
NAME	DATE

ILLINOIS DEPARTMENT OF TRANSPORTATION
WEBER ROAD & RENWICK ROAD ALIGNMENT, TIES & BENCHMARKS
 SCALE: 1" = 200'
 DATE: APRIL, 2011
 DRAWN BY: CO
 CHECKED BY: MFB

8/22/2011 P:\79766\cadd\arwings\014141\ign\ies.dgn