

F.A.P. RTE.	SECTION	COUNTY	TOTAL SHEETS	SHEET NO.
856	01-00170-26-TL	WILL	171	18
STA. 45+00		TO STA. 51+00		
FED. ROAD DIST. NO.		ILLINOIS	FED. AID PROJECT	
CONTRACT NO: 63570				

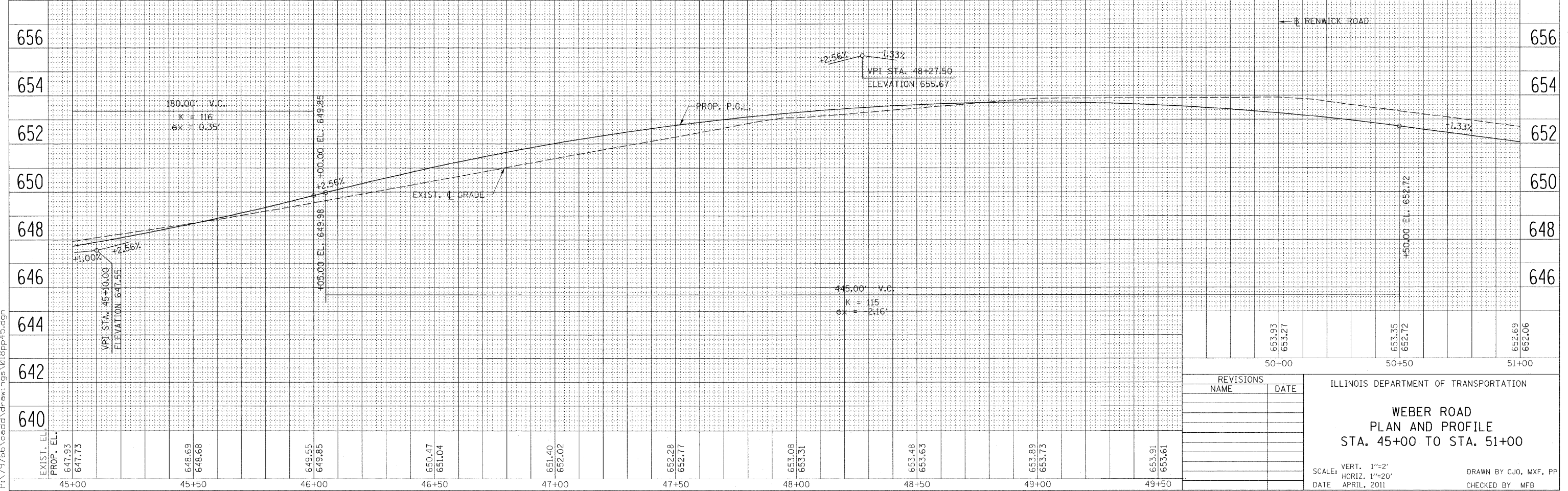
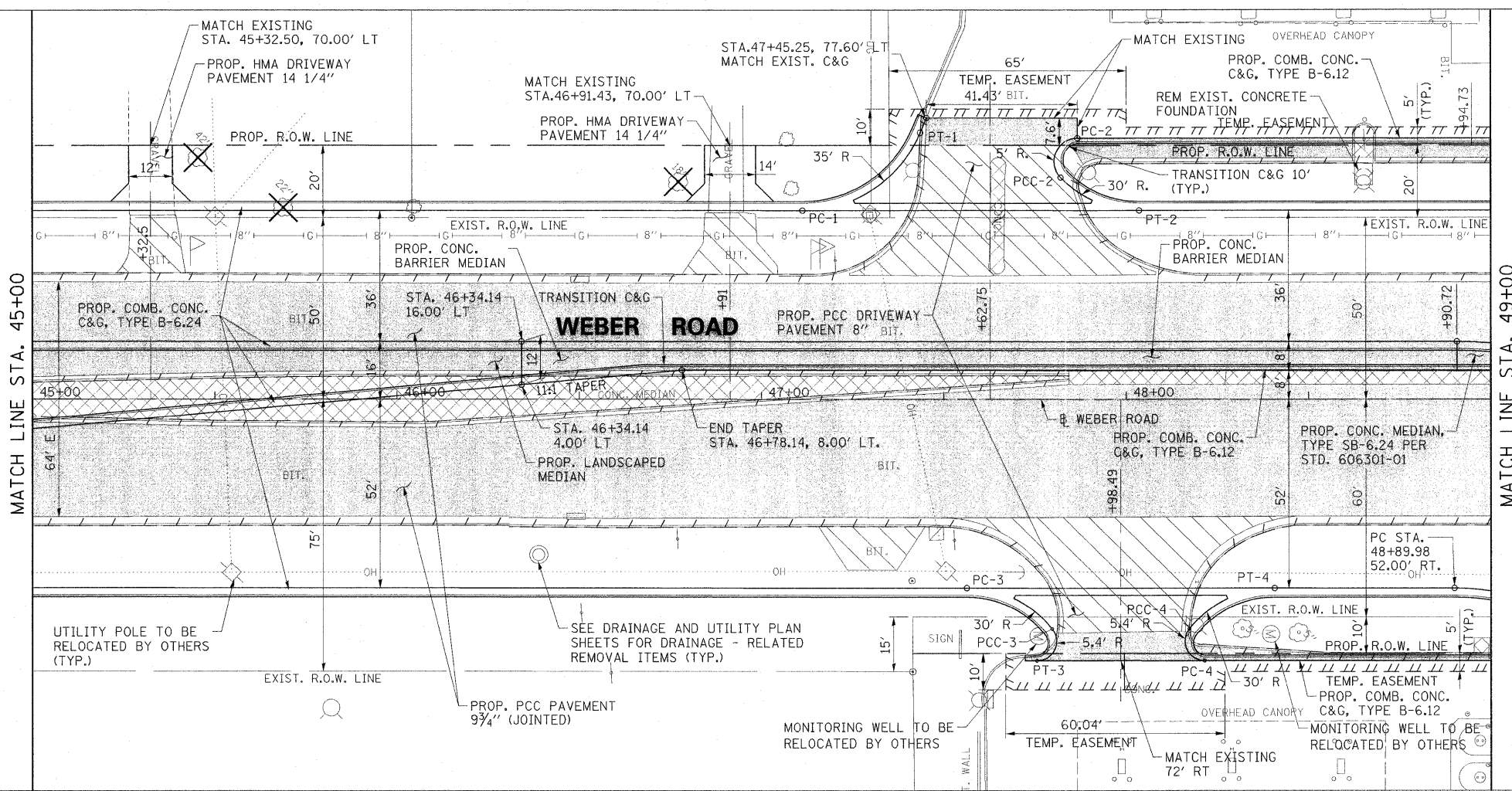
REMOVAL LEGEND:

- SIDEWALK REMOVAL
- MEDIAN REMOVAL
- SHOULDER REMOVAL
- DRIVEWAY PAVEMENT REMOVAL
- BITUMINOUS SURFACE REMOVAL
- PAVEMENT REMOVAL
- COMB. CONC. C&G REMOVAL
- TREE REMOVAL

POINT	STATION	OFFSET
PC-1	47+11.24	52.00' LT
PT-1	47+43.53	73.48' LT
PC-2	47+86.68	72.00' LT
PCC-2	47+82.07	61.10' LT
PT-2	48+03.59	52.00' LT
PC-3	47+56.31	52.00' RT
PCC-3	47+79.70	63.22' RT
PT-3	47+75.49	72.00' RT
PC-4	48+21.49	72.00' RT
PCC-4	48+17.28	63.22' RT
PT-4	48+40.68	52.00' RT

TABLE NOTE:
STATION AND OFFSET ARE AT THE EDGE OF PAVEMENT

NOTES:
SEE SHEETS 22 TO 30 FOR RENWICK ROAD PLAN AND PROFILE
SEE SHEET 26 FOR INTERSECTION PLAN AND PROFILE



REVISIONS		ILLINOIS DEPARTMENT OF TRANSPORTATION
NAME	DATE	
		WEBER ROAD PLAN AND PROFILE STA. 45+00 TO STA. 51+00

SCALE: VERT. 1"=2'
HORIZ. 1"=20'
DATE: APRIL, 2011

DRAWN BY CJO, MXF, PP
CHECKED BY MFB

8/22/2011 P:\79766\cedd\drawings\018pp45.dgn