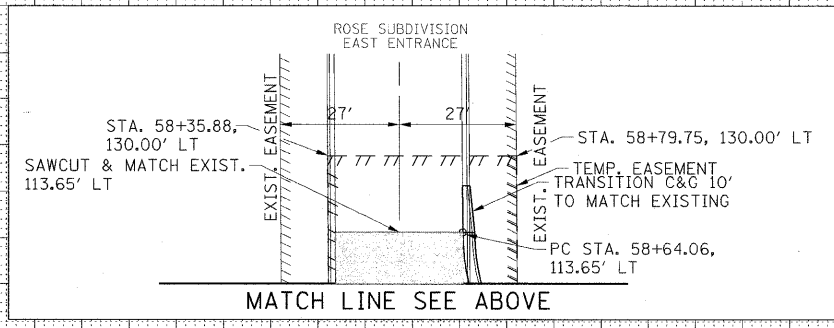
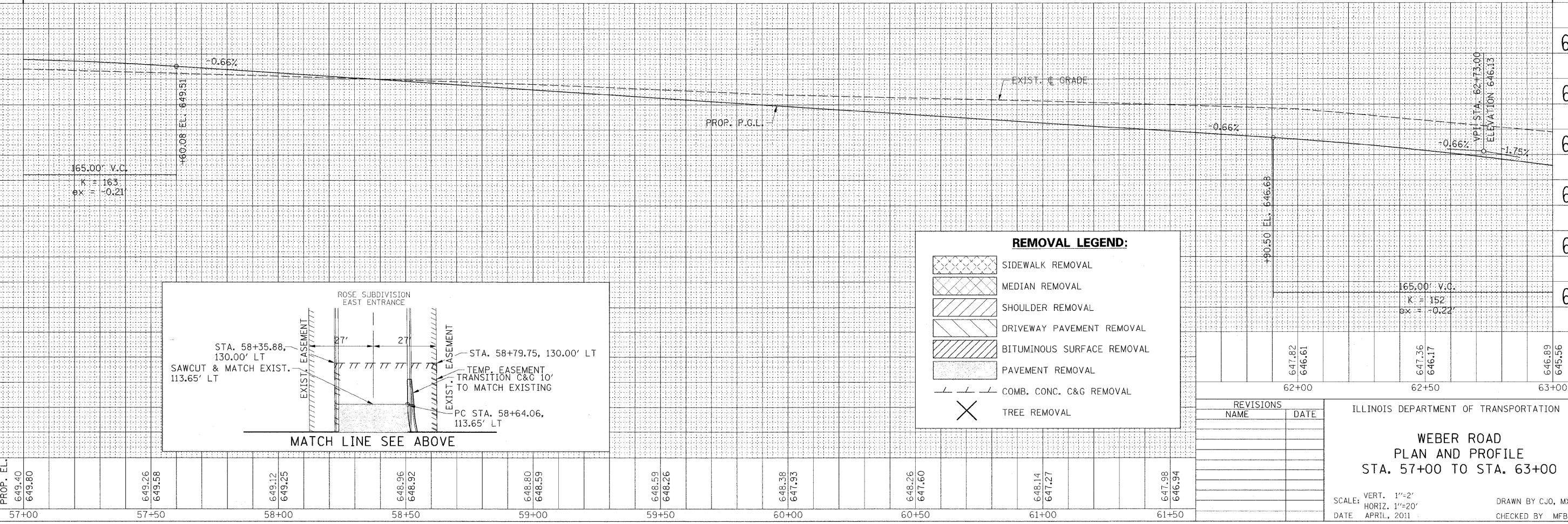
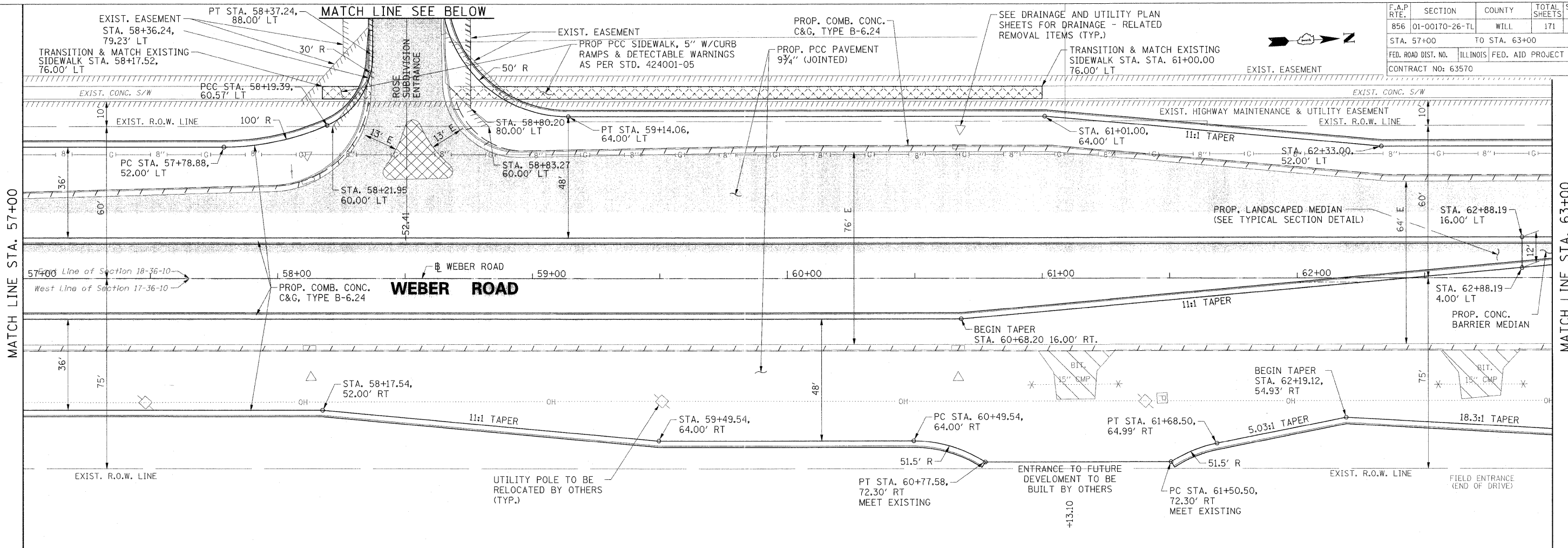


F.A.P. RTE.	SECTION	COUNTY	TOTAL SHEETS	SHEET NO.
856	01-00170-26-TL	WILL	171	20
STA. 57+00 TO STA. 63+00				
FED. ROAD DIST. NO. ILLINOIS FED. AID PROJECT				
CONTRACT NO: 63570				



**REMOVAL LEGEND:**

- SIDEWALK REMOVAL
- MEDIAN REMOVAL
- SHOULDER REMOVAL
- DRIVEWAY PAVEMENT REMOVAL
- BITUMINOUS SURFACE REMOVAL
- PAVEMENT REMOVAL
- COMB. CONC. C&G REMOVAL
- TREE REMOVAL

REVISIONS	
NAME	DATE

ILLINOIS DEPARTMENT OF TRANSPORTATION

**WEBER ROAD**  
**PLAN AND PROFILE**  
**STA. 57+00 TO STA. 63+00**

SCALE: VERT. 1"=2'  
 HORIZ. 1"=20'

DATE: APRIL, 2011

DRAWN BY CJO, MXF, PP  
 CHECKED BY MFB

8/22/2011 P:\79766\cadd\drawings\020pp\57.dgn