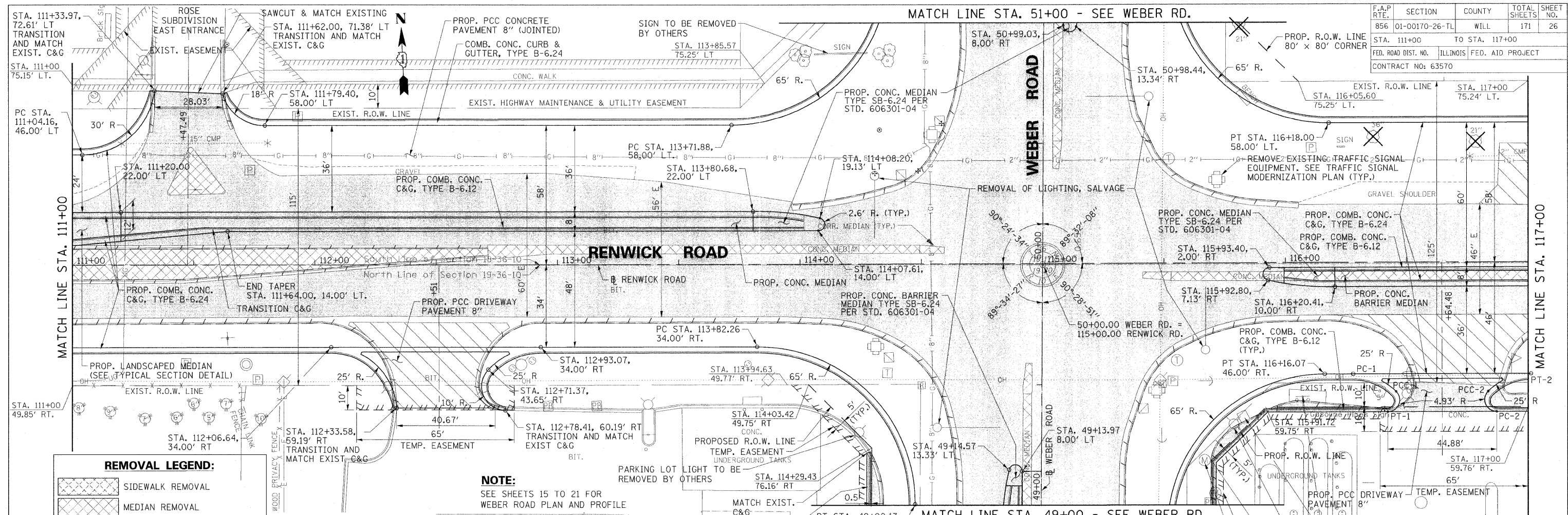


F.A.P. RTE.	SECTION	COUNTY	TOTAL SHEETS	SHEET NO.
856	01-00170-26-TL	WILL	171	26
STA. 111+00	TO STA. 117+00			
FED. ROAD DIST. NO.	ILLINOIS	FED. AID PROJECT		
CONTRACT NO: 63570				



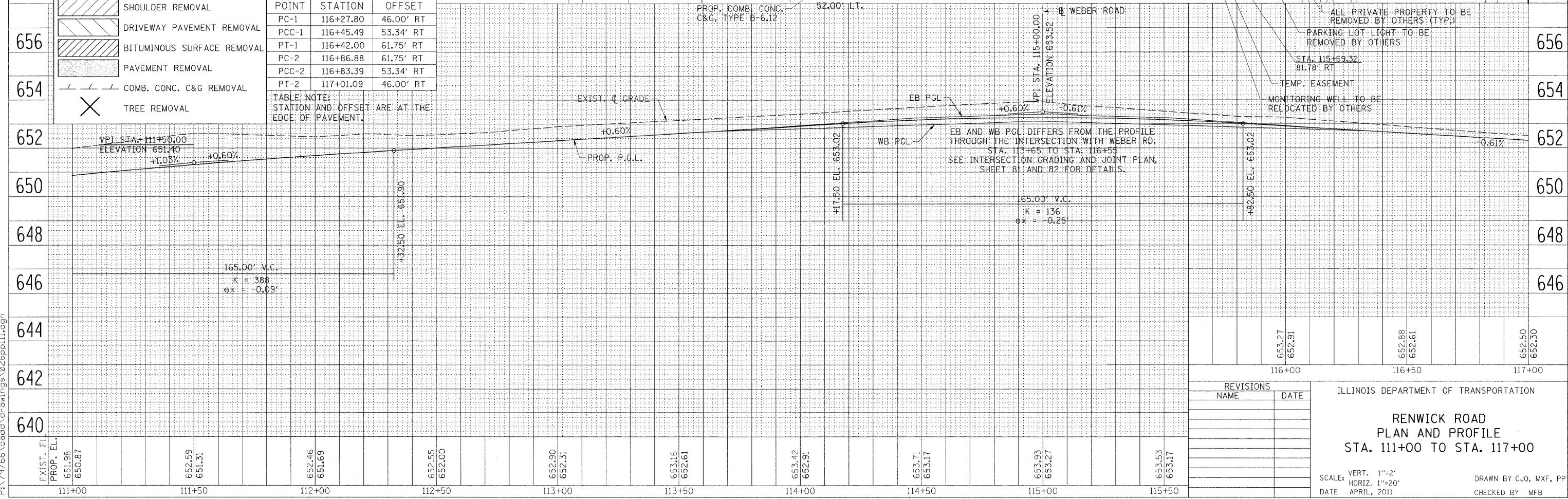
**REMOVAL LEGEND:**

- SIDEWALK REMOVAL
- MEDIAN REMOVAL
- SHOULDER REMOVAL
- DRIVEWAY PAVEMENT REMOVAL
- BITUMINOUS SURFACE REMOVAL
- PAVEMENT REMOVAL
- COMB. CONC. C&G REMOVAL
- TREE REMOVAL

POINT	STATION	OFFSET
PC-1	116+27.80	46.00' RT
PCC-1	116+45.49	53.34' RT
PT-1	116+42.00	61.75' RT
PC-2	116+86.88	61.75' RT
PCC-2	116+83.39	53.34' RT
PT-2	117+01.09	46.00' RT

TABLE NOTE:  
STATION AND OFFSET ARE AT THE  
EDGE OF PAVEMENT.

**NOTE:**  
SEE SHEETS 15 TO 21 FOR  
WEBER ROAD PLAN AND PROFILE



REVISIONS		NAME	DATE
NO.	DESCRIPTION		

ILLINOIS DEPARTMENT OF TRANSPORTATION

**RENWICK ROAD  
PLAN AND PROFILE  
STA. 111+00 TO STA. 117+00**

SCALE: VERT. 1"=2'  
HORIZ. 1"=20'

DATE: APRIL, 2011

DRAWN BY CJO, MXF, PP  
CHECKED BY MFB

B:\22\2011\p\79766\cead\drawings\026pp11.dgn