

ENVIRONMENTAL CONTROL NOTES

EROSION AND SEDIMENT CONTROL NOTES:

MINIMIZE AIR POLLUTION BY REQUIRING USE OF PROPERLY OPERATING COMBUSTION EMISSION CONTROL DEVICES ON CONSTRUCTION VEHICLES AND EQUIPMENT AND ENCOURAGE SHUTDOWN OF MOTORIZED EQUIPMENT NOT IN USE.

DO NOT BURN TRASH ON CONSTRUCTION SITE.

PRIOR TO START OF CONSTRUCTION IN ANY AREA:

SEQUENCE THE CONSTRUCTION AS IT RELATES TO INSTALLATION, PHASING, AND REMOVAL OF SEDIMENT CONTROL MEASURES.

PROVIDE EROSION CONTROL MEASURES, IN PLACE, BEFORE COMMENCING WORK ON PROJECT SITE.

1. MAINTAIN EROSION CONTROL MEASURE DURING COURSE OF CONSTRUCTION.
2. REMOVE EROSION CONTROL MEASURES UPON ESTABLISHMENT OF PERMANENT, SURFACE STABILIZATION.

MAINTAIN THE EROSION CONTROL BARRIER IN EFFECTIVE OPERATING CONDITION, REMOVING ACCUMULATIONS OF SILT AND INSPECTING AT LEAST WEEKLY AND AFTER EVERY RAINFALL OF 0.5 INCHES OR GREATER. SHOULD THE BARRIER DETERIORATE OR BECOME INEFFECTIVE THEY SHALL BE REPLACED AT THE CONTRACTOR'S EXPENSE. SEDIMENT DEPOSITS SHALL BE REMOVED WHEN: THEY IMPAIR THE FUNCTION OF THE BARRIER OR AFFECT DRAINAGE, THE BARRIER SHOWS SIGNS OF COLLAPSE, THE DOWN-STREAM AREA IS ENDANGERED, OR THE DEPOSITS ARE INTERFERING WITH PEDESTRIAN OR VEHICULAR TRAFFIC.

ANY SEDIMENT REMAINING AFTER THE EROSION CONTROL BARRIER IS REMOVED SHALL BE REMOVED AND THE AREA SODDED.

CATCH BASINS & INLETS:

INSTALL DRAINAGE STRUCTURE INLET FILTERS ON ALL INLETS AND CATCH BASINS RECEIVING RUN-OFF FROM THE PROJECT. INSPECT THE FILTERS AT LEAST DAILY DURING PROLONGED RAINFALL AND AFTER EVERY RAINFALL. THE COST OF THIS WORK SHALL BE INCLUDED IN THE CONTRACT UNIT PRICE EACH FOR INLET FILTERS.

STREETS:

PROVIDE DUST CONTROL IN ACCORDANCE WITH ARTICLE 107.36. ANY ACCUMULATIONS OF DUST OR MUD ON STREETS SHALL BE REMOVED DAILY.

NOISE:

CONDUCT OPERATIONS TO CAUSE LEAST ANNOYANCE TO RESIDENTS IN VICINITY OF WORK, AND COMPLY WITH APPLICABLE LOCAL ORDINANCES.

EQUIP COMPRESSORS, HOISTS, AND OTHER APPARATUS WITH MECHANICAL DEVICES NECESSARY TO MINIMIZE NOISE AND DUST. EQUIP COMPRESSORS WITH SILENCERS ON INTAKE LINES.

EQUIP GASOLINE OR OIL-OPERATED EQUIPMENT WITH SILENCERS OR MUFFLERS ON INTAKE AND EXHAUST LINES.

IF PILES ARE REQUIRED, USE ONLY PILEDRIVER HAMMERS WITH MUFFLERS CAPABLE OF SIGNIFICANTLY REDUCING NOISE AND USE BARRIERS OR SHIELDING TECHNIQUES AS NECESSARY TO COMPLY WITH APPLICABLE FEDERAL, STATE, AND LOCAL ORDINANCES.

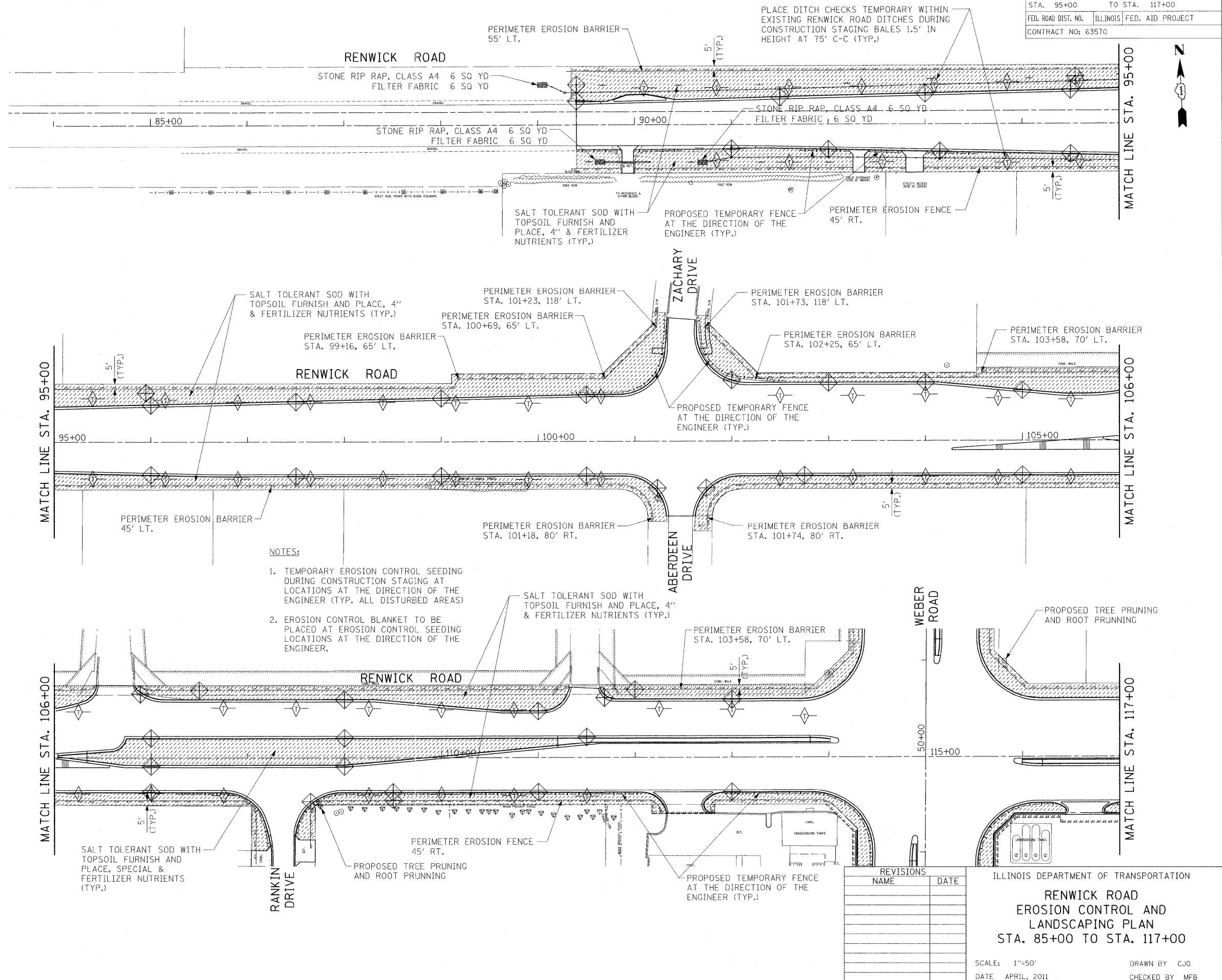
FUEL AND LUBRICANTS:

REPORT SPILLS OR LEAKS FROM FUELING EQUIPMENT OR CONSTRUCTION EQUIPMENT TO OWNER AND CLEANUP AS REQUIRED.

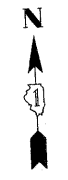
ENGINEER MAY REQUIRE CONTRACTOR TO REMOVE DAMAGED OR LEAKING EQUIPMENT FROM PROJECT SITE.

LANDSCAPING LEGEND

- SALT TOLERANT SOD
- EXISTING SHADE TREE
- EXISTING EVERGREEN TREE
- EXISTING BUSH
- PERIMETER EROSION BARRIER
- INLET AND PIPE PROTECTION
- DITCH CHECK TEMPORARY



F.A.P. RTE.	SECTION	COUNTY	TOTAL SHEETS	SHEET NO.
856	01-00170-26-TL	WILL	171	50
STA. 95+00	TO STA. 117+00			
FED. ROAD DIST. NO.	ILLINOIS	FED. AID PROJECT		
CONTRACT NO: 63570				



NOTES:

1. TEMPORARY EROSION CONTROL SEEDING DURING CONSTRUCTION STAGING AT LOCATIONS AT THE DIRECTION OF THE ENGINEER (TYP. ALL DISTURBED AREAS)
2. EROSION CONTROL BLANKET TO BE PLACED AT EROSION CONTROL SEEDING LOCATIONS AT THE DIRECTION OF THE ENGINEER.

REVISIONS	
NAME	DATE

ILLINOIS DEPARTMENT OF TRANSPORTATION
**RENWICK ROAD
 EROSION CONTROL AND
 LANDSCAPING PLAN**
 STA. 85+00 TO STA. 117+00

SCALE: 1"=50'
 DATE: APRIL, 2011

DRAWN BY: CJO
 CHECKED BY: MFB

8/22/2011 P:\79766\cadd\drawings\0501_landscape.dgn