

FILE NAME -
#FILEL*

USER NAME - #USER#
DESIGNED -
DRAWN -
CHECKED -
DATE -

REVISOR -
REVISOR -
REVISOR -
REVISOR -

DESIGNED -
DRAWN -
CHECKED -
DATE -

STATE OF ILLINOIS
DEPARTMENT OF TRANSPORTATION

LAKE COUNTY DIVISION OF TRANSPORTATION
STANDARD DETAILS

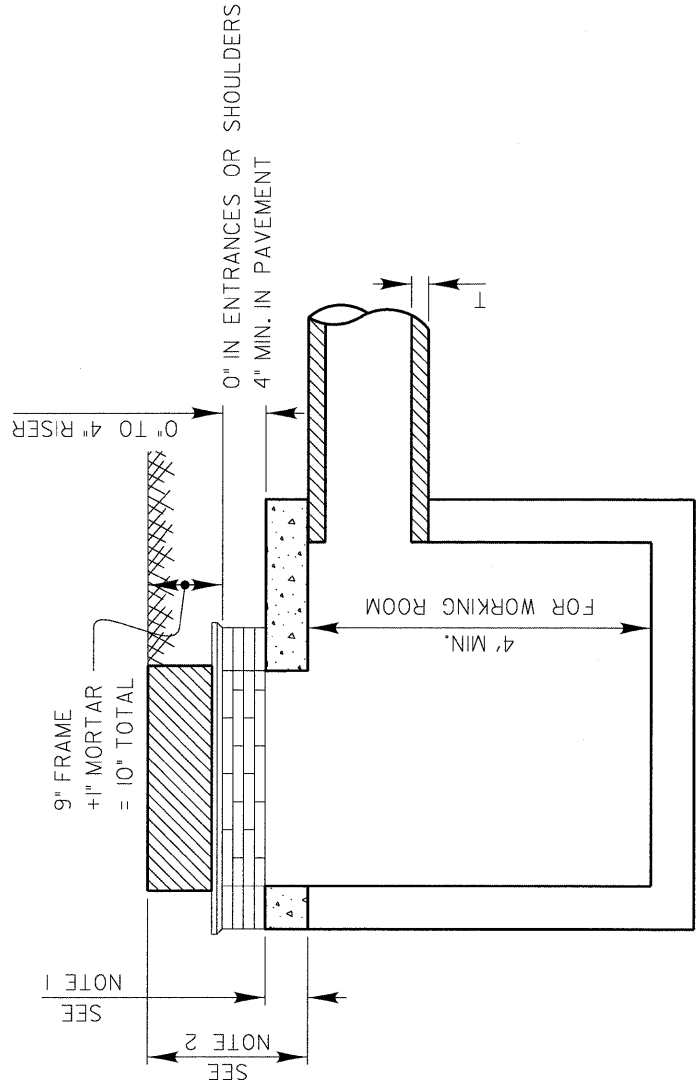
SCALE: NONE SHEET NO. 6 OF 9 SHEETS STA. TO STA.

F.A.U. RTE.	SECTION	COUNTY	TOTAL SHEETS	SHEET NO.
2605	09-00171-13-BT	LAKE	59	55
CONTRACT NO. 63619				

ILLINOIS FED. AID PROJECT

NOTE 1:
6" - 4' DIA. M.H.
8" - 5' DIA. M.H.

NOTE 2:
4' M.H. 1'-8" DESIRABLE
1'-4" MIN.
5' M.H. 1'-10" DESIRABLE
1'-6" MIN.



PIPE DIA.	T	MINIMUM DEPTH	
		4' DIAMETER	5' DIAMETER
10"	2"	2.33'	2.50'
12"	2"	2.50'	2.67'
15"	2 1/4"	2.77'	2.94'
18"	2 1/2"	3.04'	3.21'
21"	2 3/4"	-	3.48'
24"	3"	-	3.75'
30"	3 1/2"	-	4.29'
36"	4"	-	4.83'
42"	4 1/2"	-	5.38'

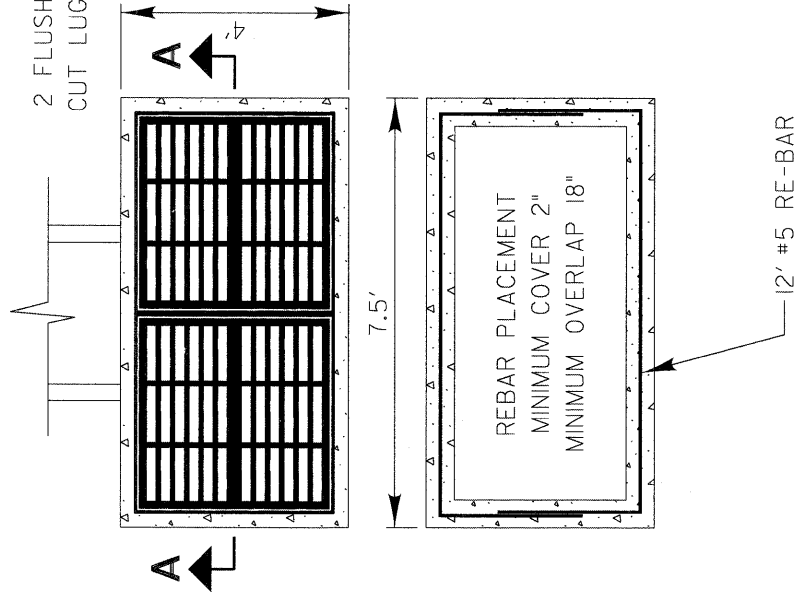
STRUCTURES REQUIRE SUMP FOR HEADROOM

SCALE: 1"=2'

REVISIONS	DATE	APPROVED BY: M. G. ZEMAITIS	DATE: APRIL 1, 2007

RESTRICTED DEPTH MANHOLE

LC6000



DRILL AND TAP FOR 2 EACH 5/8" MACHINE SCREWS

BILL OF MATERIALS

MACHINE SCREWS 5/8" x 1/4" = 2 EACH
 #5 REBAR = 24'
 STD. 542546 STEEL FRAME and GRATE = 2 EACH
 PORTLAND CEMENT CONCRETE (+5%) = CU YD

SEE IDOT STD. 542546 FOR TYPICAL DETAILS OF STD. FLUSH INLET BOX FOR MEDIAN

SCALE: 1" = 3'

REVISIONS	DATE	APPROVED BY: M. G. ZEMAITIS	DATE: APRIL 1, 2007

INLET SPECIAL, STANDARD 542546, DOUBLE (FLAT GRATES)

LC6001