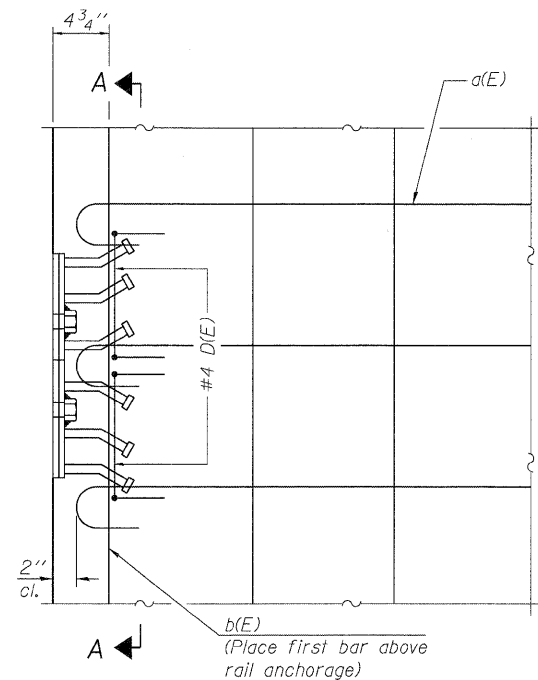
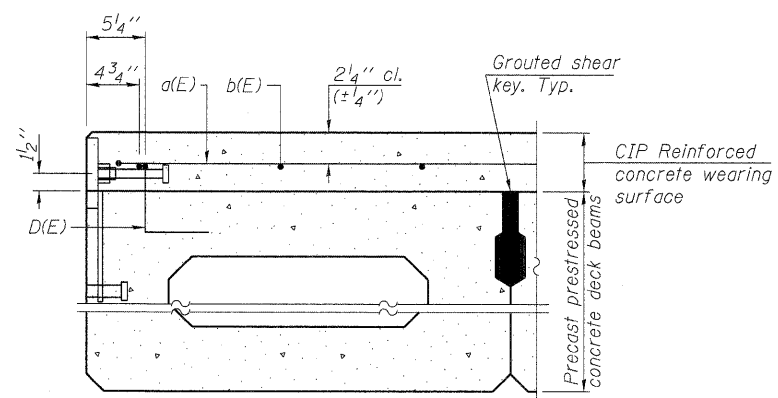


PLOT DATE = 12/12/2011  
 FILE NAME = S:\N\13\2245-9088\_Prairie Street\0405\Sheets\Paira 06 - Superstructure Details.dgn  
 USER NAME = mcr-trl

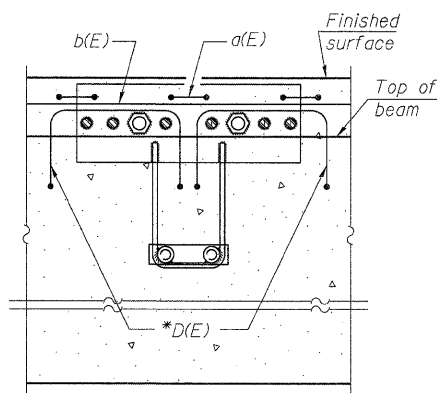


**PLAN**

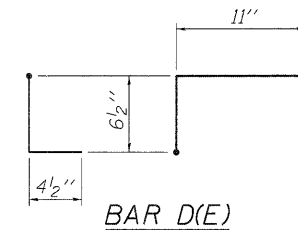
Notes:  
 Formwork necessary for the wearing surface may be secured utilizing the bottom rail anchorage inserts and/or additional inserts cast into the beam.



**SECTION THRU FASCIA BEAM**

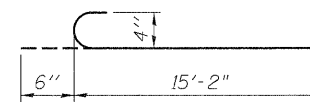


**SECTION A-A**



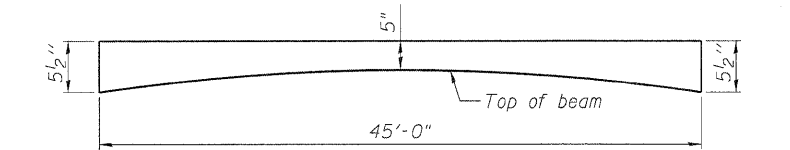
**BAR D(E)**

\* Place 2-#4 D(E) bars in beam at each post location as shown. D(E) bar included in cost of beam.



**BAR a(E)**

**MINIMUM BAR LAP**  
 #4 bar = 2'-7"



**ANTICIPATED CONCRETE WEARING SURFACE PROFILE**  
 (For information only)

**SUPERSTRUCTURE BILL OF MATERIAL**

Bar	No.	Size	Length	Shape
a(E)	272	#4	15'-8"	C
b(E)	145	#4	29'-1"	—
Reinforcement Bars, Epoxy Coated			Pound	5,670
Concrete Wearing Surface, 5"			Sq. Yd.	421

Bars indicated thus 29 x 5-#4 etc. indicates 29 lines of bars with 5 lengths per line.



DESIGNED - LM	REVISED -
CHECKED - GG	REVISED -
DRAWN - LM	REVISED -
CHECKED - DSB	REVISED -

**STATE OF ILLINOIS  
 DEPARTMENT OF TRANSPORTATION**

**SUPERSTRUCTURE DETAILS  
 STRUCTURE NO. 045-3094**

SHEET NO. 6 OF 17 SHEETS

F.A.U. RTE.	SECTION	COUNTY	TOTAL SHEETS	SHEET NO.
3895	08-15104-01-BR	KANE	38	19
			CONTRACT NO. 63661	
ILLINOIS FED. AID PROJECT				