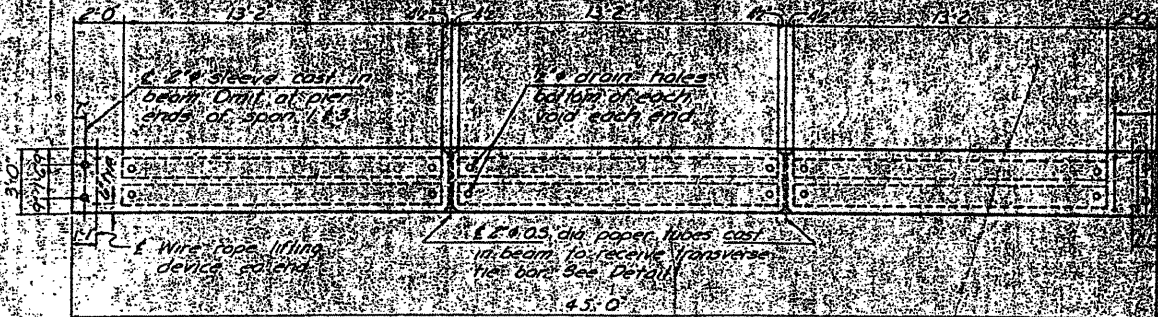
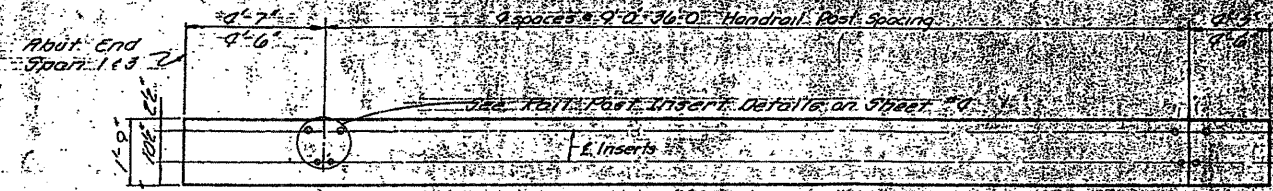


CROSS SECTION

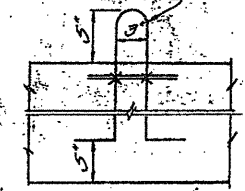


TYPICAL PLAN OF BEAM

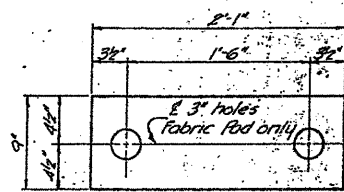


ELEVATION OF OUTSIDE BEAMS

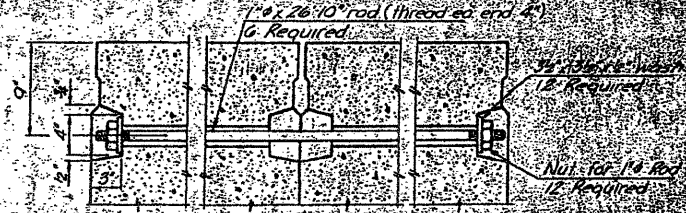
2-7/8" x 5/16" strand 1000. Coops shall be burned or fer. beams have been erected.



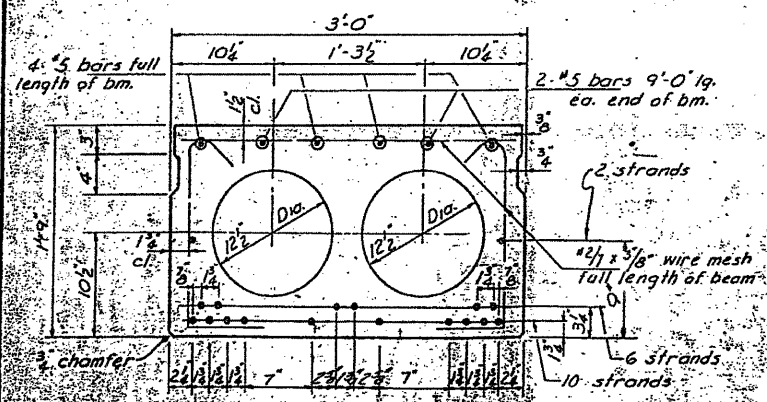
LIFTING LOOP DETAILS



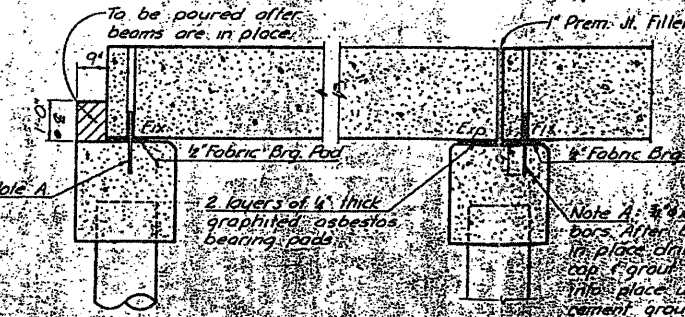
PLAN OF BEARING PADS



TYPICAL TRANSVERSE TIE ASSEMBLY



TYPICAL SECTION THRU BEAM



SECTION AT ABUTS

SECTION AT PIERS

BILL OF MATERIAL SUPERSTRUCTURE

Item	Quantity
Precast Prestressed Concrete Deck Beams	10
Steel Rail Ties	10
Bituminous Materials (Prime Coat, Guss Coat, Bituminous Mixture - Class B)	10

Item	Quantity
Steel Rail Ties	10
Bituminous Materials (Prime Coat, Guss Coat, Bituminous Mixture - Class B)	10

FOR INFORMATION ONLY

USER NAME = mcrapl  
 PLOT DATE = 1/29/2012  
 FILE NAME = X:\P\113-2245-2008 Projects Streets\CDV\S\Shawna\Project 14 - Existing Plans Ildgn



DESIGNED - LM	REVISED -
CHECKED - GG	REVISED -
DRAWN - LM	REVISED -
CHECKED - DSB	REVISED -

STATE OF ILLINOIS  
DEPARTMENT OF TRANSPORTATION

EXISTING PLANS (2 OF 5)  
STRUCTURE NO. 045-3094

SHEET NO. 14 OF 17 SHEETS

F.A.U. RTE.	SECTION	COUNTY	TOTAL SHEETS	SHEET NO.
3895	08-15104-01-BR	KANE	38	27
				CONTRACT NO. 63661

ILLINOIS FED. AID PROJECT