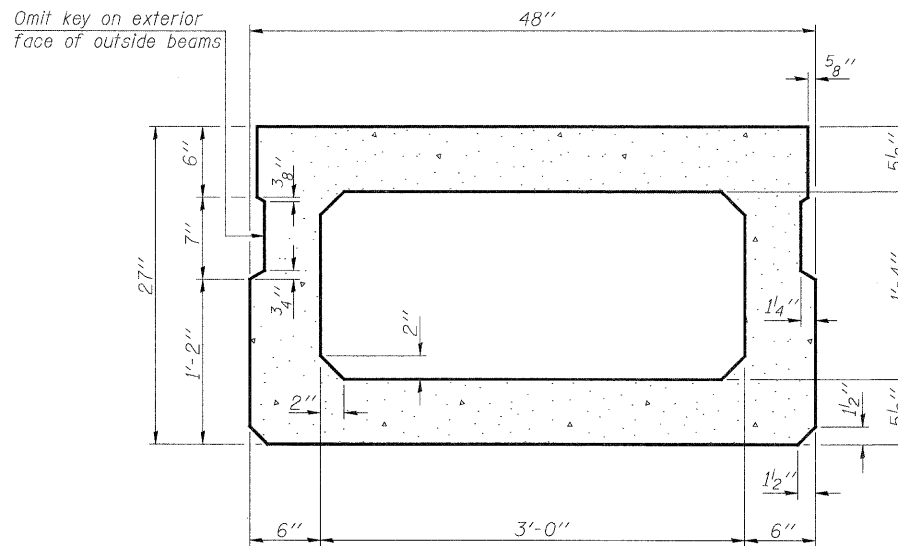
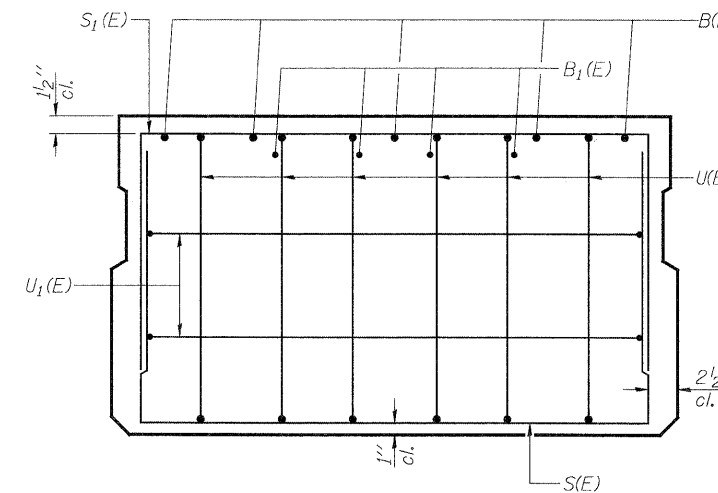


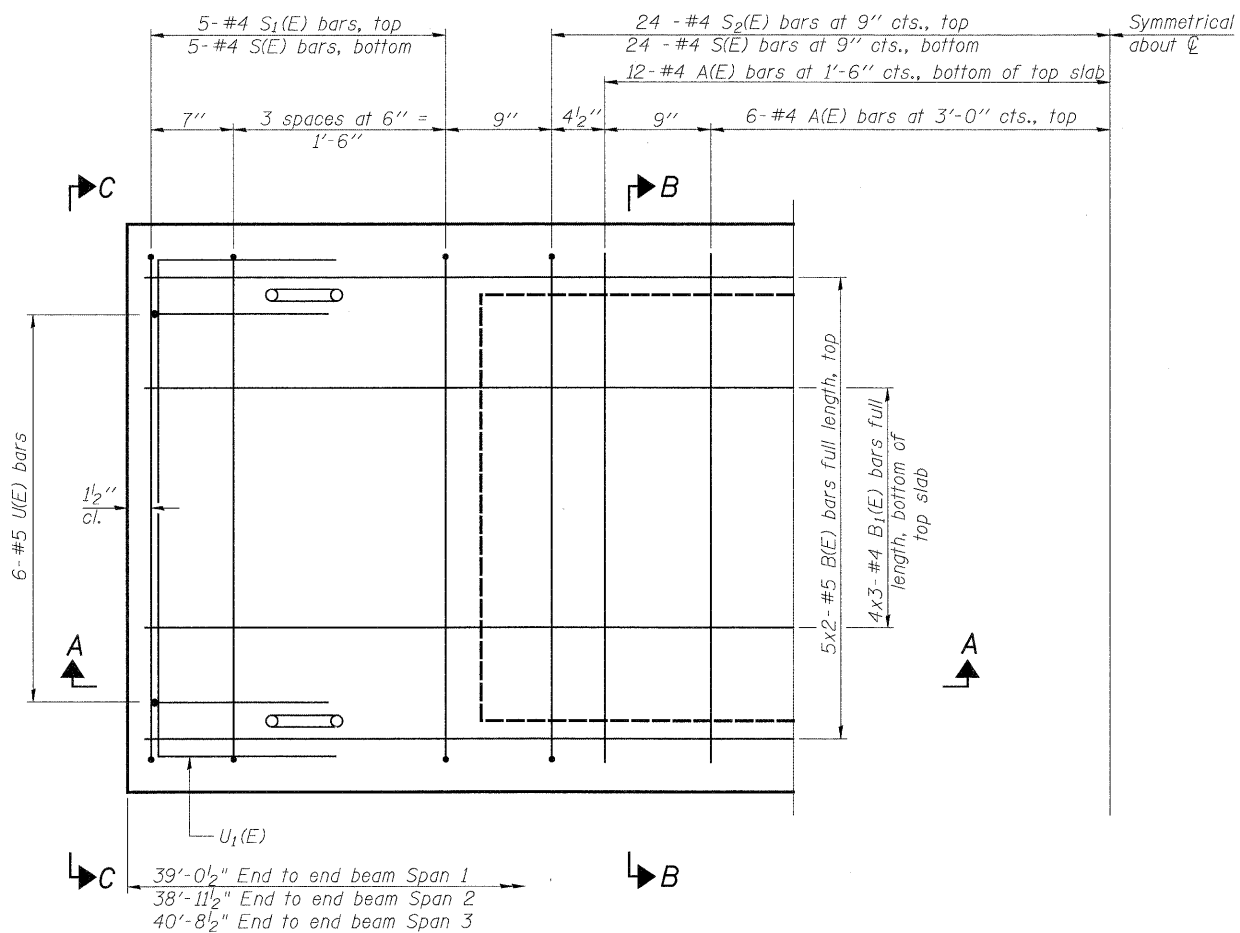
SECTION A-A



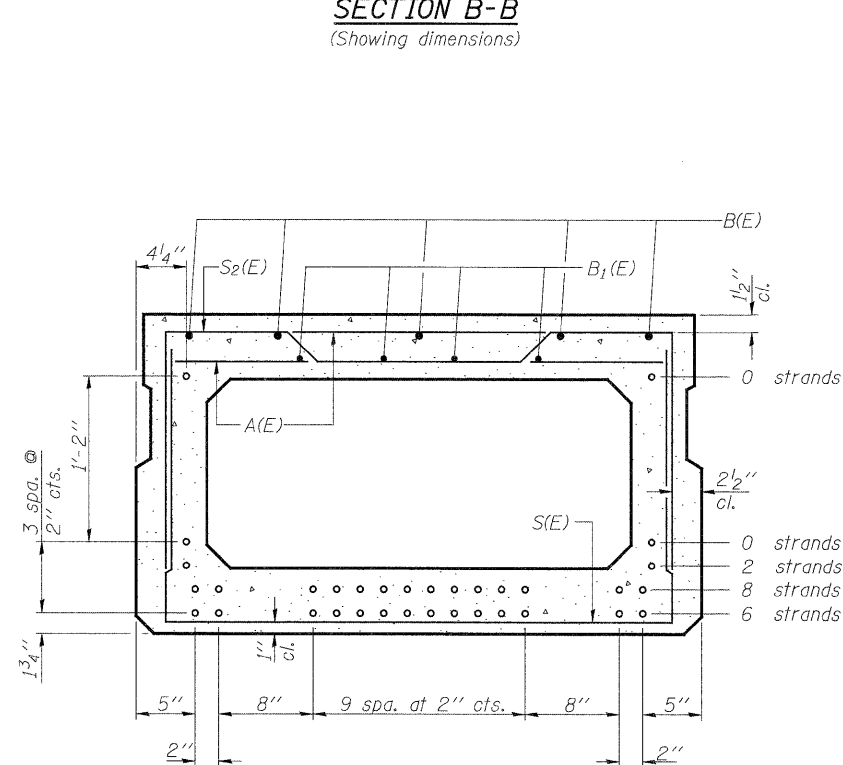
SECTION B-B
(Showing dimensions)



VIEW C-C



PLAN VIEW



SECTION B-B
(Showing reinforcement and permissible strand locations)

Note: Place the number of strands specified in each row symmetrically about the centerline of beam in the permissible strand locations shown.

BAR LIST
ONE BEAM ONLY

(For information only)

Bar	No.	Size	Length	Shape
A(E)	36	#4	3'-7"	—
B(E)	10	#5	21'-6"	—
B1(E)	12	#4	14'-9"	—
D(E)	56	#4	5'-6"	□*
S(E)	58	#4	7'-5"	□
S1(E)	10	#4	6'-11"	□
S2(E)	48	#4	7'-2"	□
U(E)	12	#5	4'-6"	□
U1(E)	4	#4	6'-0"	□

Note: See sheet S15 of S24 for additional details and Bill of Material.

* Exterior beams only, see Sheet S-13 for details.

Note: Spacing of S(E) and S2(E) bars may be adjusted up to 4" in the immediate area of the transverse tie diaphragms to miss the block outs for the transverse ties.

MINIMUM BAR LAP

#4 bar = 2'-0"
#5 bar = 2'-6"

PD-2748-0

7-1-10

PATRICK ENGINEERING INC.
4970 VARSITY DRIVE
LISLE, IL 60532
patrickengineering.com

USER NAME =
PLOT CONFIG =
PLOT SCALE =
PLOT DATE =

DESIGNED - RDW
CHECKED - RLD
DRAWN - APD
CHECKED - RLD

REVISED -
REVISED -
REVISED -
REVISED -

DUPAGE COUNTY
DIVISION OF TRANSPORTATION

DECK BEAM DETAILS I
75TH STREET OVER EAST BRANCH DUPAGE RIVER

SHEET NO. S14 OF S24 SHEETS

FAP RTE.	SECTION	COUNTY	TOTAL SHEETS	SHEET NO.
0369	08-00162-03-BR	DUPAGE	58	37
				CONTRACT NO. 63662

ILLINOIS FED. AID PROJECT