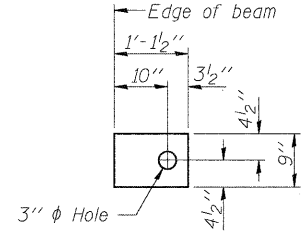


FABRIC BEARING PAD
(Interior)

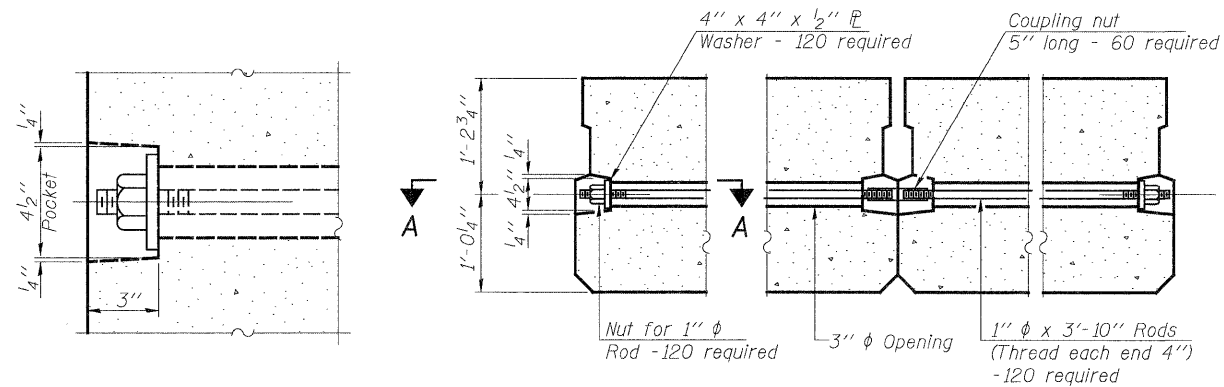


FABRIC BEARING PAD
(Exterior)

FIXED

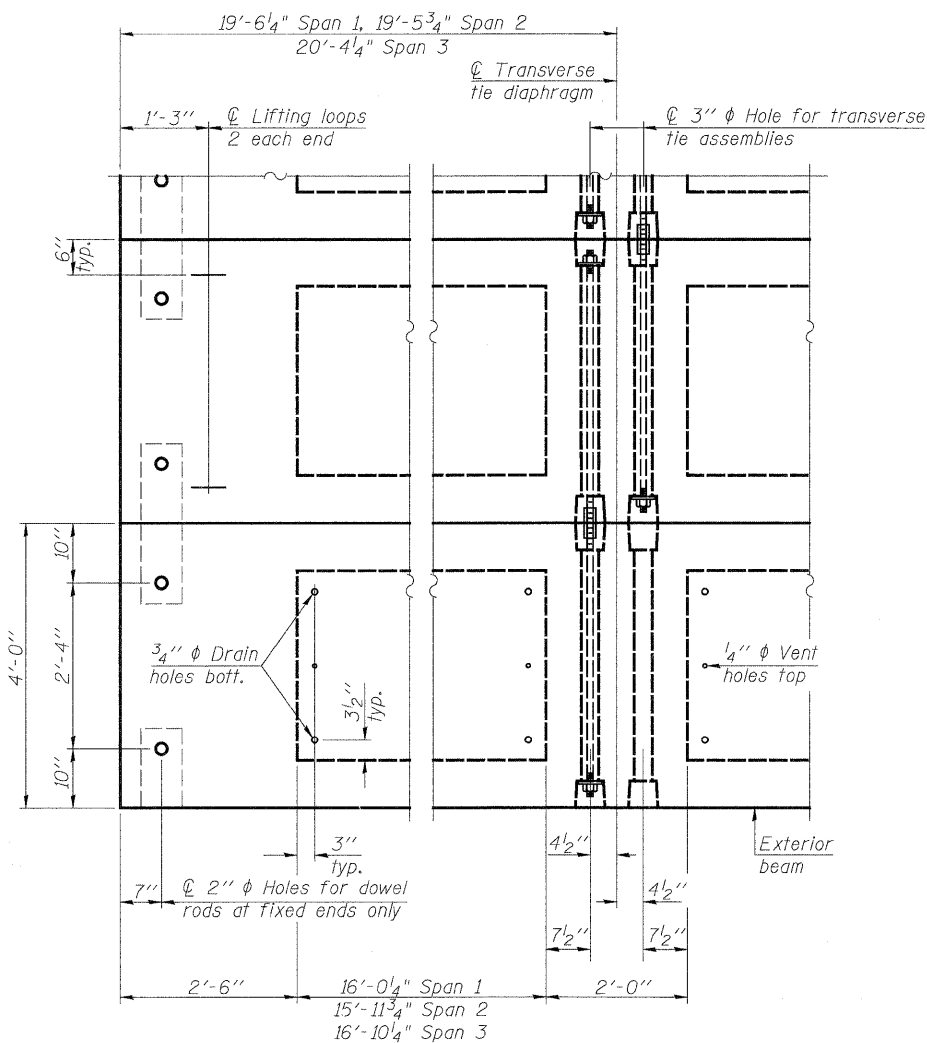
Notes:

All bearing pads shall be 1" thick.
Omit holes when using expansion bearings.
Expansion bearing pad shall be bonded to the substructure.



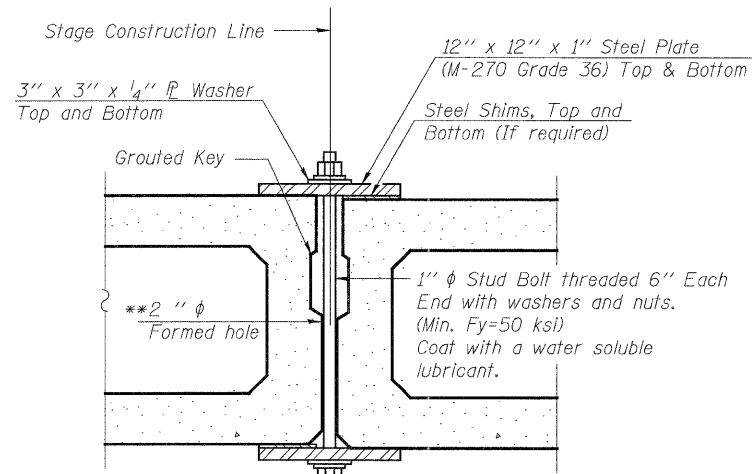
SECTION A-A

TYPICAL TRANSVERSE TIE ASSEMBLY



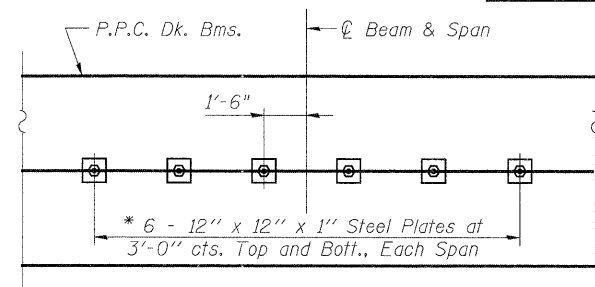
PLAN VIEW

Note: Connect beams in pairs with the transverse tie configuration shown.



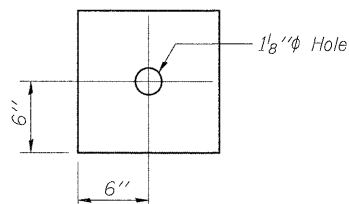
SECTION

SHEAR KEY CLAMPING DETAILS AT STAGE CONST. JT.

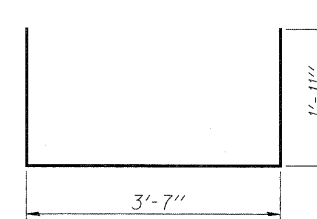


PLAN

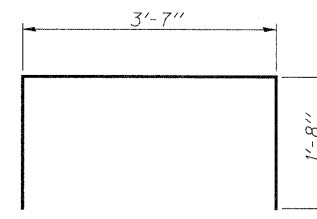
* Space plates to miss Temporary Bridge Rail Posts.



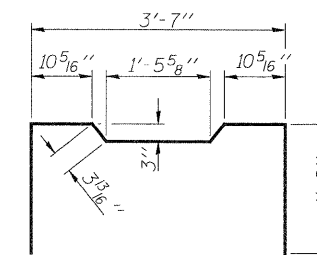
CLAMPING PLATE



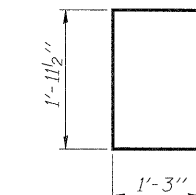
BAR S(E)



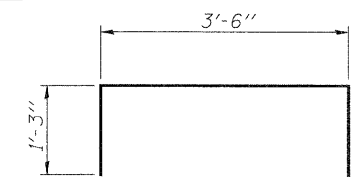
BAR S1(E)



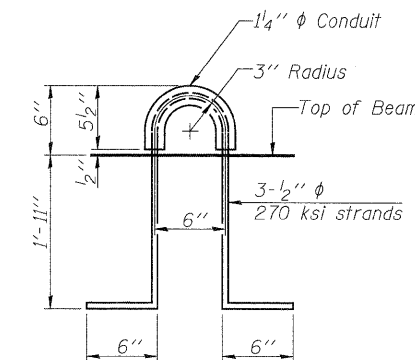
BAR S2(E)



BAR U(E)



BAR U1(E)



LIFTING LOOP DETAIL

NOTES

Prestressing steel shall be uncoated high strength, low relaxation 7-wire strand, Grade 270. The nominal diameter shall be 1/2" and the nominal cross-sectional area shall be 0.153 sq. in.

The 1" rods in the transverse tie assembly shall be tightened to a snug fit and the threads set. Pockets on exterior faces of bridge shall be filled with grout after transverse tie assembly is in place.

Reinforcement bars shall conform to ASTM A 706, Grade 60. (See Special Provisions).

Two 5/8" fabric adjusting shims of the dimensions of the exterior bearing pad shall be provided for each bearing pad location.

A minimum 2 1/2" diameter lifting pin shall be used to engage the lifting loops during handling.

Corrosion Inhibitor, per Article 1020.05(b)(12) and 1021.06 of the Standard Specifications, shall be used in the concrete for precast prestressed concrete deck beams.

Compressive strength of prestressed concrete, f'c, shall be 6000 psi.

Compressive strength of prestressed concrete at release, f'ci, shall be 5000 psi.

After beams have been erected, holes shall be drilled into substructure and anchor dowels placed. Dowel holes shall be filled with non-shrink grout to top of beam and allowed to cure min. 24 hrs. prior to grouting shear keys.

BILL OF MATERIAL

Precast Prestressed Conc. Deck Bms. (27" depth)	Sq. Ft.	9,972
---	---------	-------

PD-2748-0D

7-1-10

PATRICK ENGINEERING INC.
4970 VARSITY DRIVE
LISLE, IL 60532
patrickengineering.com

USER NAME =	DESIGNED - RDW	REVISED -
PLOT CONFIG =	CHECKED - RLD	REVISED -
PLOT SCALE =	DRAWN - APD	REVISED -
PLOT DATE =	CHECKED - RLD	REVISED -

DESIGNED - RDW	REVISED -
CHECKED - RLD	REVISED -
DRAWN - APD	REVISED -
CHECKED - RLD	REVISED -

DUPAGE COUNTY
DIVISION OF TRANSPORTATION

DECK BEAM DETAILS II
75TH STREET OVER EAST BRANCH DUPAGE RIVER

SHEET NO. S15 OF S24 SHEETS

FAP R.T.E.	SECTION	COUNTY	TOTAL SHEETS	SHEET NO.
0369	08-00162-03-BR	DUPAGE	58	38
CONTRACT NO. 63662				
ILLINOIS FED. AID PROJECT				