

**STANDARD BAR SPLICER ASSEMBLY**

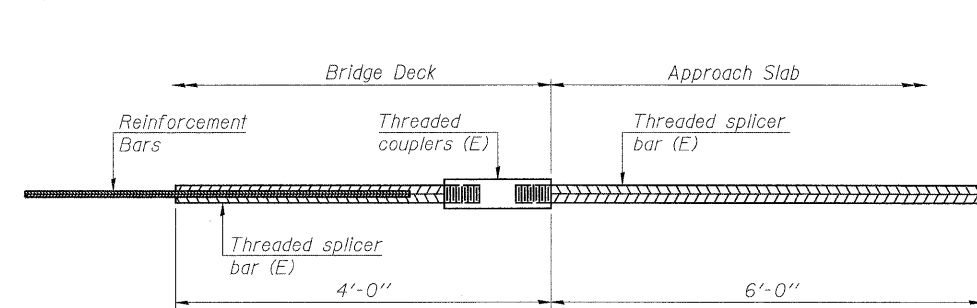
Minimum Lap Lengths					
Bar size to be spliced	Table 1	Table 2	Table 3	Table 4	Table 5
3, 4	1'-5"	1'-11"	2'-1"	2'-4"	2'-3"
5	1'-9"	2'-5"	2'-7"	2'-11"	2'-10"
6	2'-1"	2'-11"	3'-1"	3'-6"	3'-4"
7	2'-9"	3'-10"	4'-2"	4'-8"	4'-6"
8	3'-8"	5'-1"	5'-5"	6'-2"	5'-10"
9	4'-7"	6'-5"	6'-10"	7'-9"	7'-5"

- Table 1: Black bar, 0.8 Class C
- Table 2: Black bar, Top bar lap, 0.8 Class C
- Table 3: Epoxy bar, 0.8 Class C
- Table 4: Epoxy bar, Top bar lap, 0.8 Class C
- Table 5: Epoxy bar, Top bar lap, Class B

Threaded splicer bar length = min. lap length + 1/2" + thread length

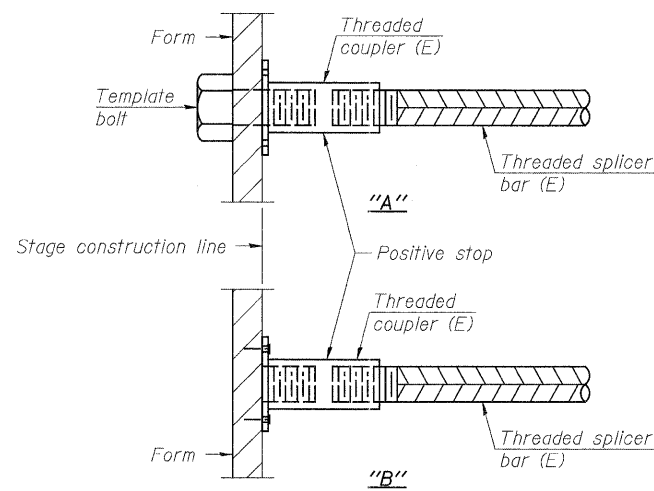
\* Epoxy not required on Bar Splicer Assembly components used in conjunction with black bars.

Location	Bar size	No. assemblies required	Table for minimum lap length
Deck	#4	120	Table 3
Diaphragm (at abutments)	#6	-	Table 3
Abutments	#5	30	Table 3
Piers (cap)	#5	16	Table 3
Piers (cap)	#7	-	Table 3
Piers (stem)	#5	-	Table 3
Approach slab	#4	50	Table 3
Approach slab	#5	92	Table 3
Approach footing	#5	80	Table 3



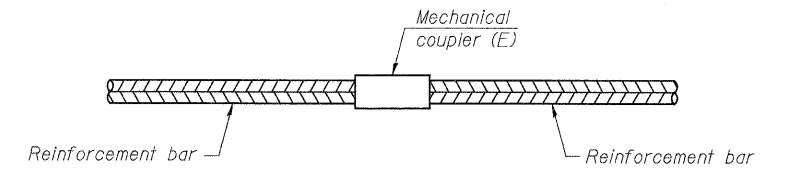
**BAR SPLICER ASSEMBLY FOR #5 BAR ON INTEGRAL OR SEMI-INTEGRAL ABUTMENTS**

No. required =

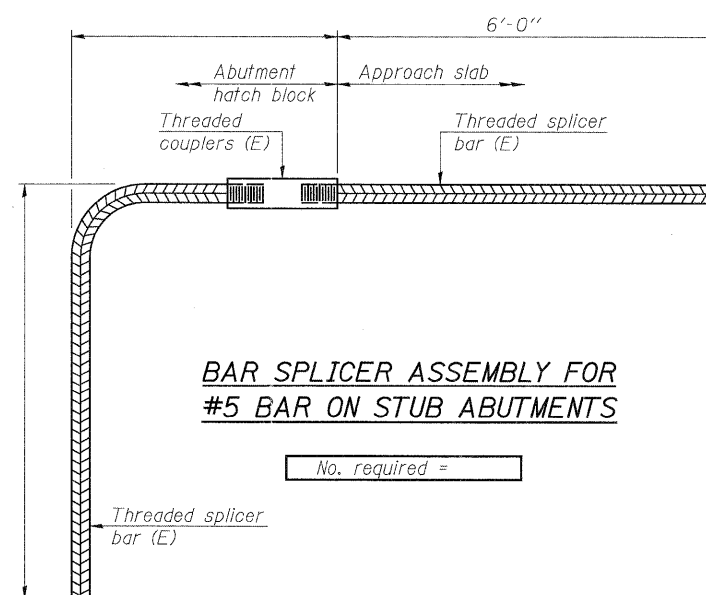


**INSTALLATION AND SETTING METHODS**

- "A" : Set bar splicer assembly by means of a template bolt.
- "B" : Set bar splicer assembly by nailing to wood forms or cementing to steel forms.
- (E) : Indicates epoxy coating.



**STANDARD MECHANICAL SPLICER**



**BAR SPLICER ASSEMBLY FOR #5 BAR ON STUB ABUTMENTS**

No. required =

**NOTES**

- Splicer bars shall be deformed with threaded ends and have a minimum 60 ksi yield strength.
- All reinforcement shall be lapped and tied to the splicer bars.
- Bar splicer assemblies shall be epoxy coated according to the requirements for reinforcement bars. See Section 508 of the Standard Specifications.
- See special provision for Mechanical Splicers.
- See approved list of bar splicer assemblies and mechanical splicers for alternatives.

BSD-1

7-1-10

<p>PATRICK ENGINEERING INC. 4970 VARSITY DRIVE LISLE, IL 60532 patrickengineering.com</p>	USER NAME =	DESIGNED - RDW	REVISED -	<b>DUPAGE COUNTY DIVISION OF TRANSPORTATION</b>	<b>BAR SPLICER ASSEMBLY AND MECHANICAL SPLICER DETAIL 75TH STREET OVER EAST BRANCH DUPAGE RIVER</b>	FAP RTE.	SECTION	COUNTY	TOTAL SHEETS	SHEET NO.
	PLOT CONFIG	CHECKED - APD	REVISED -			0369	08-00162-03-BR	DUPAGE	58	45
	PLOT SCALE =	DRAWN - RDW	REVISED -			CONTRACT NO. 63662				
	PLOT DATE =	CHECKED - APD	REVISED -			SHEET NO. S22 OF S24 SHEETS				
						ILLINOIS FED. AID PROJECT				