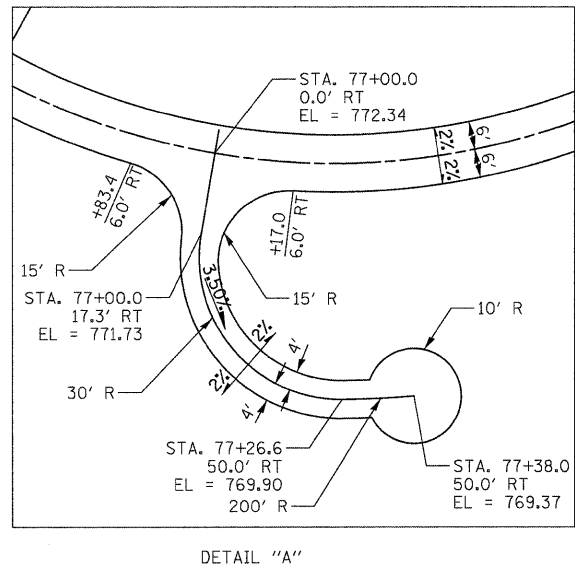
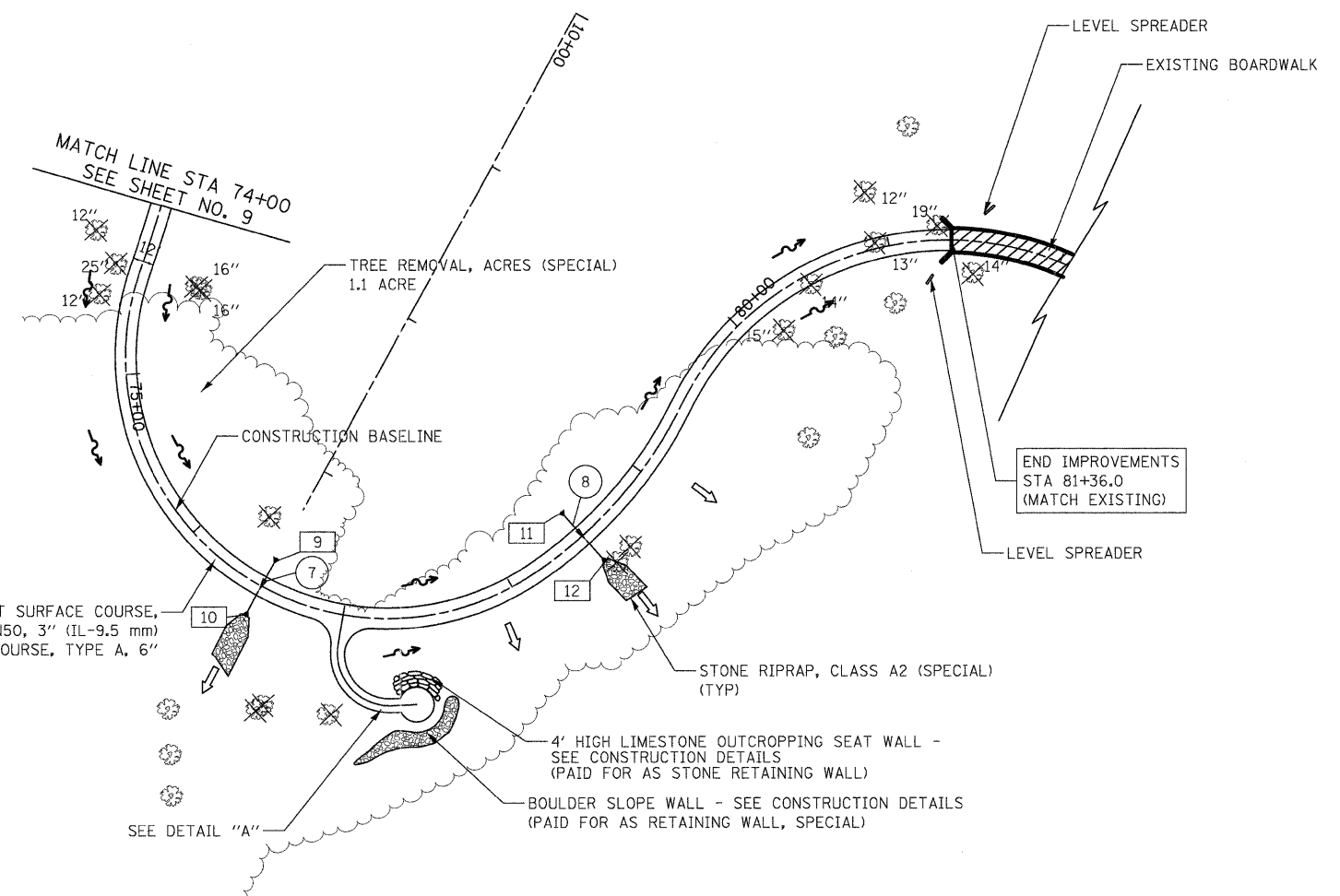


DATE	
BY	
SURVEYED	
PLOTTED	
TEMPLATE	
NOTE BOOK	
AREAS CHECKED	
NO.	



- LEGEND:
- PERMANENT DITCH
 - OVERLAND FLOW
 - REMOVAL
 - TREE REMOVAL AND DIAMETER

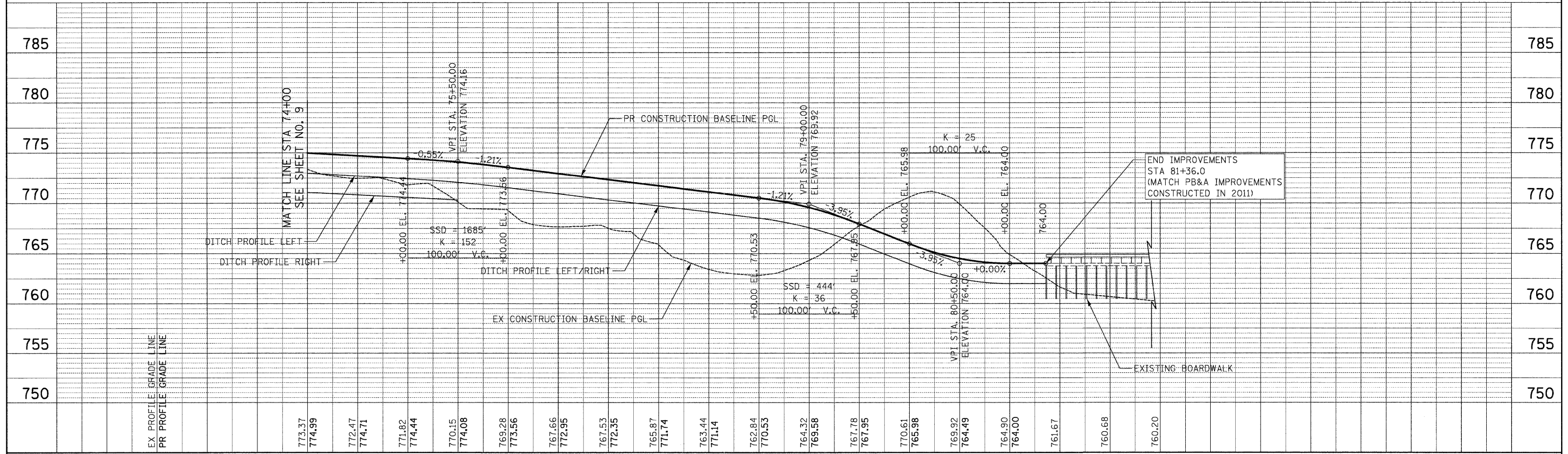
HOT-MIX ASPHALT SURFACE COURSE,
MIX "D", N50, 3" (IL-9.5 mm)
AGGREGATE BASE COURSE, TYPE A, 6"



- 7 38' - STORM SEW CL B 1, 12" @ 1.00%
TBF = 3 CU YD
- 8 38' - STORM SEW CL B 1, 12" @ 1.00%
TBF = 3 CU YD
- 9 STA 76+50.00, 18.32' LT
MET END SEC 12
INV 770.95 (NE)
- 10 STA 76+50.00, 19.85' RT
MET END SEC 12
INV 770.57 (SW)
- 11 STA 78+50.00, 18.32' LT
MET END SEC 12
INV 768.53 (N)
- 12 STA 78+50.00, 19.85' RT
MET END SEC 12
INV 768.15 (S)

MILLENNIUM TRAIL

DATE	
BY	
SURVEYED	
PLOTTED	
TEMPLATE	
NOTE BOOK	
AREAS CHECKED	
NO.	



USER NAME = pk	DESIGNED - PK	REVISED -	STATE OF ILLINOIS DEPARTMENT OF TRANSPORTATION	VERT. 0 5 10 HORIZ. 50 100 SCALES	MILLENNIUM TRAIL - PLAN & PROFILE GRAND AVENUE UNDERPASS	F.A.P. RTE. 0541	SECTION 10-F3000-00-BT	COUNTY LAKE	TOTAL SHEETS 91	SHEET NO. 12
FILE NAME ...\2322_PP_02_Bikepath.dgn	DRAWN - PK	REVISED -				CONTRACT NO. 63665				
PLOT SCALE 50,0000' / 1"	CHECKED - RTM	REVISED -				FED. ROAD DIST. NO. 1 ILLINOIS FED. AID PROJECT				
PLOT DATE = 12/14/2011	DATE - 12/19/2011	REVISED -				SHEET NO. 2 OF 2 SHEETS STA. 74+00 TO STA. 81+47				