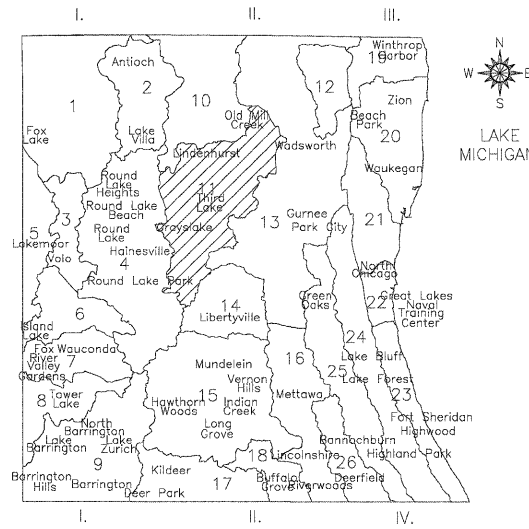


SEDIMENTATION AND EROSION CONTROL NOTES

- SOIL DISTURBANCE SHALL BE CONDUCTED IN SUCH A MANNER AS TO MINIMIZE EROSION. SOIL STABILIZATION MEASURES SHALL CONSIDER THE TIME OF YEAR, SITE CONDITIONS AND THE USE OF TEMPORARY OR PERMANENT MEASURES.
- SOIL EROSION AND SEDIMENT CONTROL FEATURES SHALL BE CONSTRUCTED PRIOR TO THE COMMENCEMENT OF HYDROLOGIC DISTURBANCE OF UPLAND AREAS.
- DISTURBED AREAS SHALL BE STABILIZED WITH TEMPORARY OR PERMANENT MEASURES WITHIN 14 CALENDAR DAYS OF THE END OF ACTIVE HYDROLOGIC DISTURBANCE, OR REDISTURBANCE.
- AREAS OR EMBANKMENTS HAVING SLOPES GREATER THAN OR EQUAL TO 3H:1V, AND APPROVED BY THE ENFORCEMENT OFFICER, SHALL BE STABILIZED WITH EROSION CONTROL BLANKET (SPECIAL) IN COMBINATION WITH SEEDING AS SPECIFIED ON THE PLANS.
- EROSION CONTROL BLANKET SHALL BE REQUIRED ON ALL INTERIOR DETENTION BASIN SIDE SLOPES BETWEEN NORMAL WATER LEVEL AND HIGH WATER LEVEL.
- ALL STORM SEWERS THAT ARE OR WILL BE FUNCTIONING DURING CONSTRUCTION SHALL BE PROTECTED BY AN APPROPRIATE SEDIMENT CONTROL MEASURE.
- ALL TEMPORARY EROSION AND SEDIMENT CONTROL MEASURES SHALL BE REMOVED WITHIN 30 DAYS AFTER FINAL SITE STABILIZATION IS ACHIEVED OR AFTER THE TEMPORARY MEASURES ARE NO LONGER NEEDED.
- ALL TEMPORARY AND PERMANENT EROSION CONTROL MEASURES MUST BE MAINTAINED AND REPAIRED AS NEEDED. THE PROPERTY OWNER SHALL BE ULTIMATELY RESPONSIBLE FOR MAINTENANCE AND REPAIR.
- A STABILIZED MAT OF AGGREGATE UNDERLAIN WITH FILTER CLOTH (OR OTHER APPROPRIATE MEASURE) SHALL BE LOCATED AT ANY POINT WHERE TRAFFIC WILL BE ENTERING OR LEAVING A CONSTRUCTION SITE TO OR FROM A PUBLIC RIGHT-OF-WAY, STREET, ALLEY OR PARKING AREA. ANY SEDIMENT OR SOIL REACHING AN IMPROVED PUBLIC RIGHT-OF-WAY, STREET, ALLEY OR PARKING AREA SHALL BE REMOVED BY SCRAPING OR STREET CLEANING AS ACCUMULATIONS WARRANT AND TRANSPORTED TO A CONTROLLED SEDIMENT DISPOSAL AREA.
- SOIL STOCKPILES SHALL NOT BE LOCATED IN A FLOOD PRONE AREA OR A DESIGNATED BUFFER PROTECTING WATERS OF THE UNITED STATES OR ISOLATED WATERS OF LAKE COUNTY.
- IF DEWATERING SERVICES ARE USED, ADJOINING PROPERTIES AND DISCHARGE LOCATIONS SHALL BE PROTECTED FROM EROSION. DISCHARGES SHALL BE ROUTED THROUGH AN EFFECTIVE SEDIMENT CONTROL MEASURES (E.G. SEDIMENT TRAP, SEDIMENT BASIN, OR OTHER APPROPRIATE MEASURE).
- THE EROSION CONTROL MEASURES INDICATED ON THE PLANS ARE THE MINIMUM REQUIREMENTS. ADDITIONAL MEASURES MAY BE REQUIRED, AS DIRECTED BY THE ENGINEER OR GOVERNING AGENCY.
- QUANTITIES HAVE BEEN PROVIDED FOR EROSION CONTROL MAT, FLOCCULATION LOGS, FLOCCULATION POWDER, AND TEMPORARY FENCE TO BE USED AT THE DIRECTION OF THE RESIDENT ENGINEER.

DRAINAGE BASINS OF LAKE COUNTY

- I. FOX RIVER WATERSHED**
 - UPPER FOX RIVER
 - SEQUOIT CREEK
 - FISH LAKE DRAIN
 - SQUAW CREEK
 - LOWER FOX RIVER
 - MUTTON CREEK
 - SLOCUM LAKE DRAIN
 - TOWER LAKE DRAIN
 - FLINT CREEK
- II. DES PLAINES RIVER WATERSHED**
 - NORTH MILL CREEK
 - MILL CREEK
 - NEWPORT DRAINAGE DITCH
 - UPPER DES PLAINES RIVER
 - BULL CREEK
 - INDIAN CREEK
 - LOWER DES PLAINES RIVER
 - BUFFALO CREEK
 - APTAKISIC CREEK
- III. LAKE MICHIGAN WATERSHED**
 - KELLOGG CREEK
 - DEAD RIVER
 - WAUKEGAN RIVER
 - PETTIBONE CREEK
 - BLUFF/RAVINE
- IV. CHICAGO RIVER WATERSHED**
 - SKOKIE RIVER
 - MIDDLE FORK
 - WEST FORK



NOTES

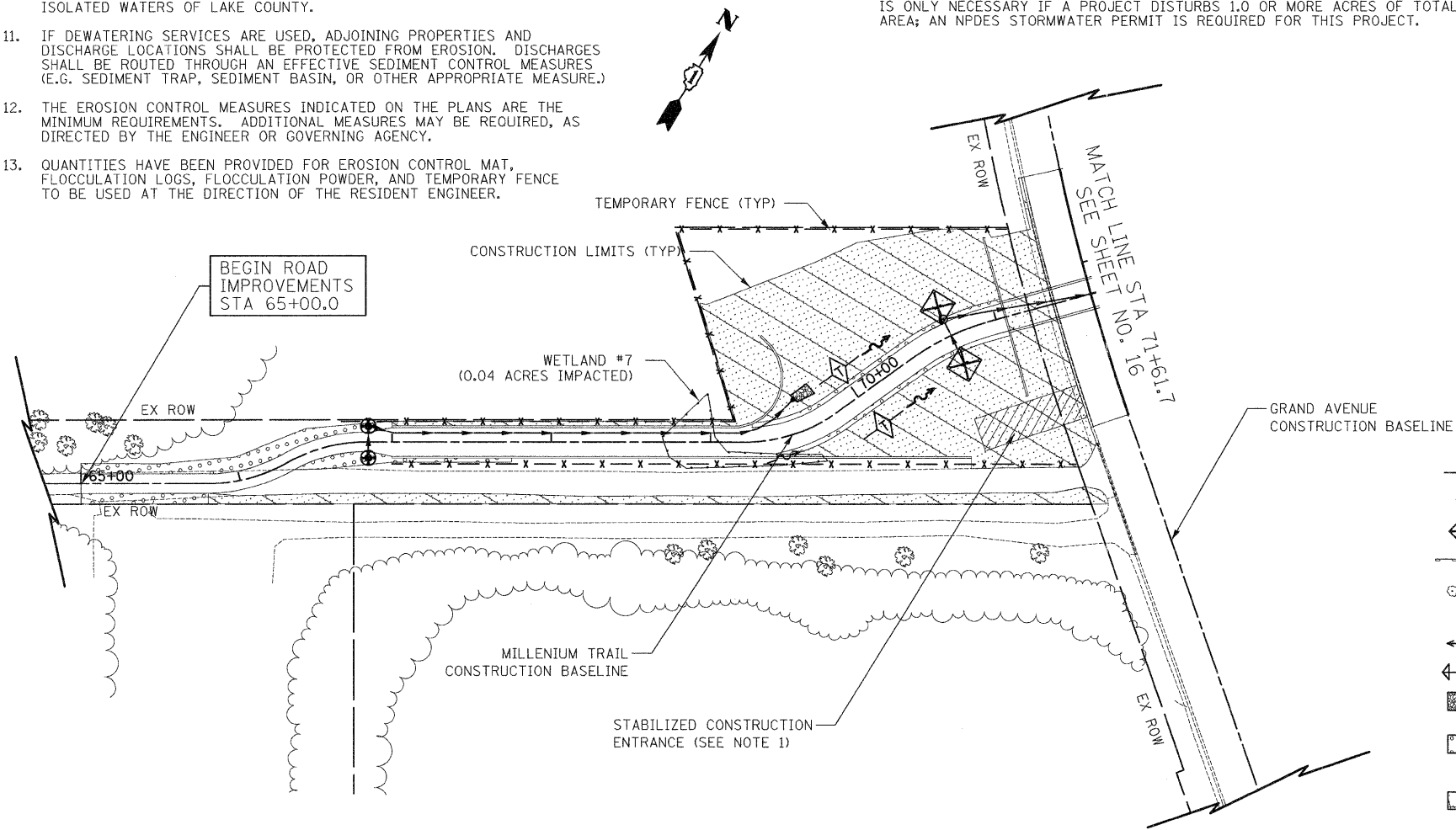
- STABILIZED CONSTRUCTION ENTRANCES SHALL BE CONSTRUCTED AT LOCATIONS DESIGNATED BY THE ENGINEER.
- SHOULDER AREAS THRU BACKSIDE OF THE SWALE SHALL BE RESTORED WITH SEEDING, CLASS 2 (MODIFIED) AND ALL OTHER AREAS SHALL BE RESTORED WITH SEEDING, CLASS 3 (MODIFIED).
- QUANTITIES HAVE BEEN PROVIDED FOR EROSION CONTROL BLANKET (SPECIAL), HEAVY DUTY EROSION CONTROL BLANKET SPECIAL, FLOCCULATION LOGS, FLOCCULATION POWDER, MULCH METHOD 2, TEMPORARY SEEDING, AND EARTH EXCAVATION FOR EROSION CONTROL TO BE USED AT THE DIRECTION OF THE RESIDENT ENGINEER.

SMC TYPICAL CONSTRUCTION SEQUENCE

- INSTALLATION OF SOIL EROSION AND SEDIMENT CONTROL SE/SC MEASURES
 - SELECTIVE VEGETATION REMOVAL FOR SILT FENCE INSTALLATION
 - SILT FENCE INSTALLATION
 - CONSTRUCTION FENCING AROUND AREAS NOT TO BE DISTURBED
 - STABILIZED CONSTRUCTION ENTRANCE
 - TREE REMOVAL WHERE NECESSARY (CLEAR & GRUB)
 - CONSTRUCT SEDIMENT TRAPPING DEVICES (SEDIMENT TRAPS, BASINS*)
 - CONSTRUCT DETENTION FACILITIES AND OUTLET CONTROL STRUCTURE WITH RESTRICTOR & TEMPORARY PERFORATED RISER
 - STRIP TOPSOIL, STOCKPILE TOPSOIL AND GRADE SITE
 - TEMPORARILY STABILIZE TOPSOIL STOCKPILES (SEED AND SILT FENCE AROUND TOE OF SLOPE)
 - INSTALL STORM SEWER, SANITARY SEWER, WATER AND ASSOCIATED INLET & OUTLET PROTECTION
 - PERMANENTLY STABILIZE DETENTION BASINS WITH SEED AND EROSION CONTROL BLANKET
 - TEMPORARILY STABILIZE ALL AREAS INCLUDING LOTS THAT HAVE REACHED TEMPORARY GRADE
 - INSTALL ROADWAYS
 - PERMANENTLY STABILIZE ALL OUTLOT AREAS
 - INSTALL STRUCTURES AND GRADE INDIVIDUAL LOTS
 - PERMANENTLY STABILIZE LOTS
 - REMOVE ALL TEMPORARY SE/SC MEASURES AFTER THE SITE IS STABILIZED WITH VEGETATION
- * SOIL EROSION AND SEDIMENT CONTROL MAINTENANCE MUST OCCUR EVERY TWO WEEKS AND AFTER EVERY 1/2 OR GREATER RAINFALL EVENT

NPDES STATEMENT:

THIS PROJECT DISTURBS 5.9 ACRES OF TOTAL LAND AREA. COMPLIANCE WITH THE NATIONAL POLLUTION DISCHARGE ELIMINATION SYSTEM (NPDES) STORMWATER PERMIT IS ONLY NECESSARY IF A PROJECT DISTURBS 1.0 OR MORE ACRES OF TOTAL LAND AREA; AN NPDES STORMWATER PERMIT IS REQUIRED FOR THIS PROJECT.



LEGEND

- TEMPORARY DITCH CHECKS
- INLET FILTERS
- INLET AND PIPE PROTECTION
- PERIMETER EROSION BARRIER
- EXISTING TREES
- TREE PROTECTION & PRESERVATION
- ROADWAY SWALE FLOW
- HIGH POINT DITCH FLOW
- STONE RIPRAP, CLASS A1
- SEEDING, CLASS 2 (MODIFIED)
- EROSION CONTROL BLANKET (SPECIAL)
- TOPSOIL EXCAVATION AND PLACEMENT
- SEEDING, CLASS 3 (MODIFIED)
- EROSION CONTROL BLANKET (SPECIAL)
- TOPSOIL EXCAVATION AND PLACEMENT

ESTIMATED QUANTITIES

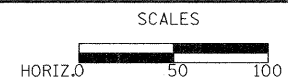
- 918 FEET - PERIMETER EROSION BARRIER
- 224 FEET - TEMPORARY DITCH CHECKS
- 4 EACH - INLET AND PIPE PROTECTION
- 6 EACH - INLET FILTERS
- 87 SQ YD - STONE RIPRAP, CLASS A2 (SPECIAL)
- 105 SQ YD - FILTER FABRIC
- 0.50 ACRE - SEEDING, CLASS 2 (MODIFIED)
- 5.25 ACRE - SEEDING, CLASS 3 (MODIFIED)
- 655 POUND - TEMPORARY EROSION CONTROL SEEDING
- 31,702 SQ YD - EROSION CONTROL BLANKET (SPECIAL)
- 8,066 CU YD - TOPSOIL EXCAVATION AND PLACEMENT
- 1,010 FOOT - TEMPORARY FENCE
- 134 SQ YD - HEAVY DUTY EROSION CONTROL BLANKET, SPECIAL
- 20 EACH - FLOCCULATION LOGS
- 104 POUND - FLOCCULATION POWDER
- 334 SQ YD - STABILIZED CONSTRUCTION ENTRANCE

DATE	
BY	
SURVEYED	
PLOTTED	
TEMPLATE	
NOTE BOOK	
AREAS CHECKED	
NO.	

DATE	
BY	
SURVEYED	
PLOTTED	
TEMPLATE	
NOTE BOOK	
AREAS CHECKED	
NO.	

USER NAME = pk	DESIGNED - PK	REVISED -
FILE NAME = ...2322_Erosion_Control_01.dgn	DRAWN - PK	REVISED -
PLOT SCALE = 5/8"=1' @ 11"	CHECKED - RTM	REVISED -
PLOT DATE = 12/14/2011	DATE - 12/19/2011	REVISED -

**STATE OF ILLINOIS
DEPARTMENT OF TRANSPORTATION**



**LANDSCAPING AND EROSION CONTROL
GRAND AVENUE UNDERPASS**

SHEET NO. 1 OF 2 SHEETS STA. 65+80 TO STA. 71+61.7

F.A.P. RTE.	SECTION	COUNTY	TOTAL SHEETS	SHEET NO.
0541	10-F3000-00-BT	LAKE	91	18
CONTRACT NO. 63665			FED. ROAD DIST. NO. 1 ILLINOIS FED. AID PROJECT	