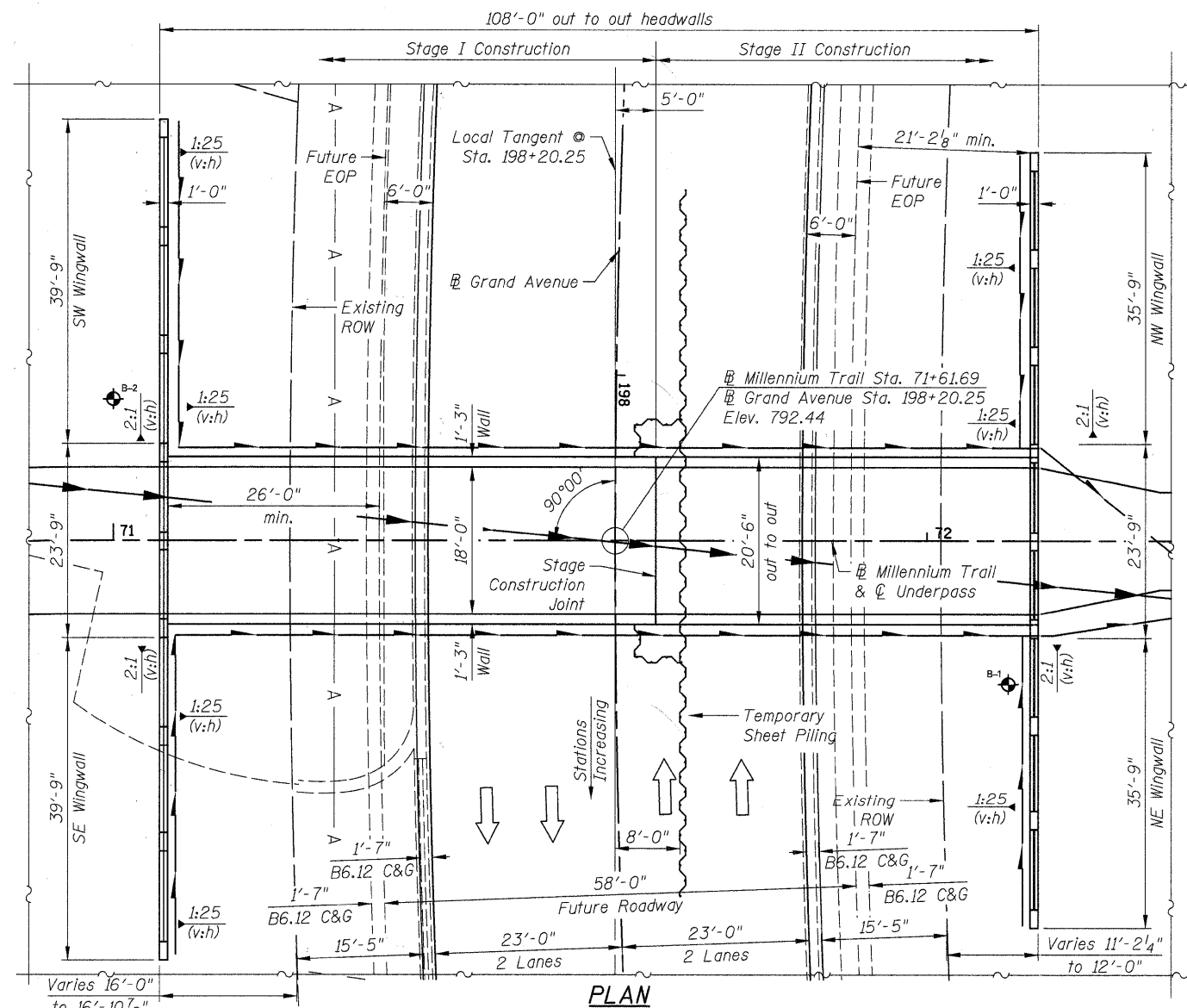
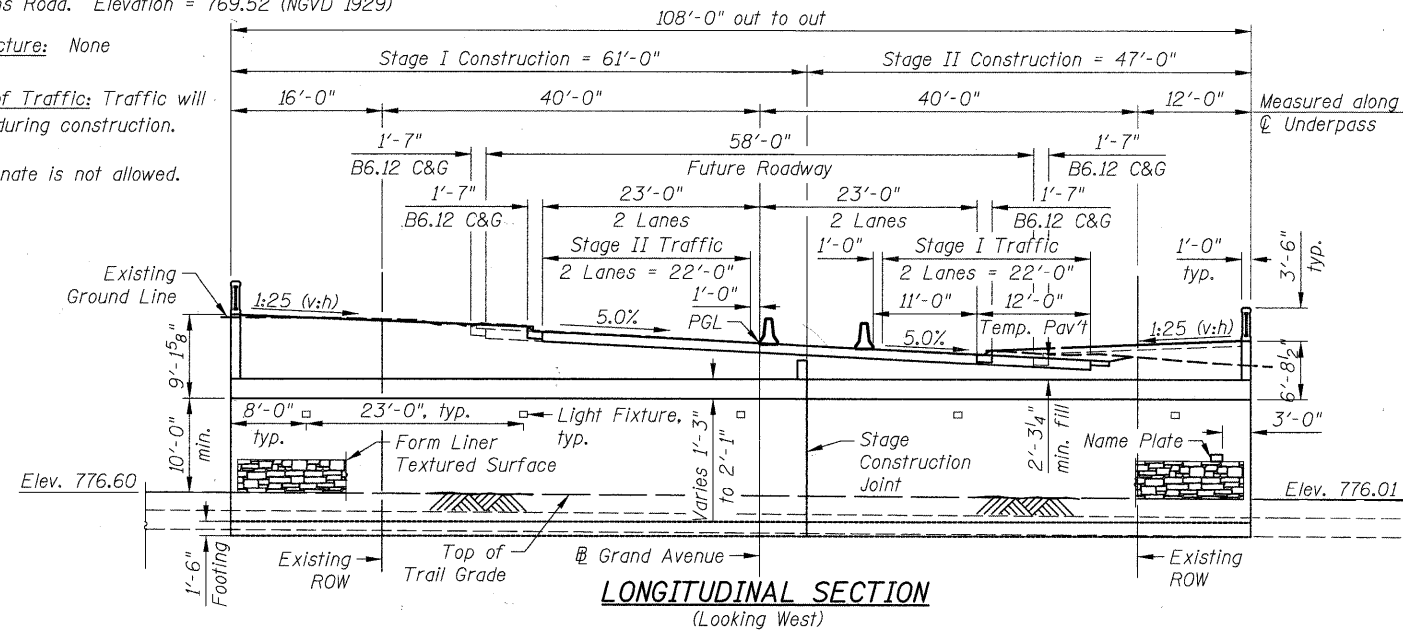


Benchmark: Cut square "□" in concrete at the southwest corner of parapet wall on the south side of Rollins Road across from 19714 Rollins Road. Elevation = 769.52 (NGVD 1929)

Existing Structure: None

Maintenance of Traffic: Traffic will be staged during construction.

Precast alternate is not allowed.

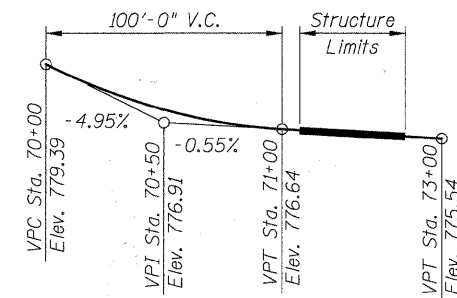


INDEX OF SHEETS

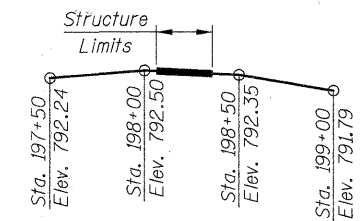
- S1 General Plan & Longitudinal Section
- S2 General Data
- S3 Underpass Plan & Elevation
- S4 Underpass Details
- S5 South Wingwalls
- S6 North Wingwalls
- S7 Wingwall Details
- S8 Architectural Details
- S9 Bar Splicer Assembly Details
- S10 "Intentionally Left Blank"
- S11 Underpass Soil Boring Logs

GRAND AVENUE
BUILT 201 BY
LAKE COUNTY FOREST
PRESERVE DISTRICT
SEC 10-F3000-00-BT
F.A.P. 0541 STA. 198+20.25
STR. NO. 049-9003 LOADING HS20

NAME PLATE
See Std. 515001



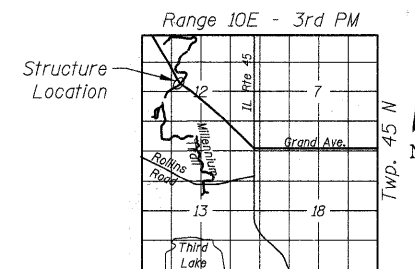
PROPOSED PROFILE GRADE
MILLENNIUM TRAIL
(Along ϕ Millennium Trail)



EXISTING PROFILE OF GRAND AVENUE
(Along ϕ Grand Avenue)

CURVE DATA

GRAND AVENUE
 $\Delta = 23^\circ 20' 35"$ (Lt.)
 $D = 3^\circ 59' 57"$
 $T = 295.95'$
 $L = 583.69'$
 $E = 30.25'$
 $R = 1,432.69'$
S.E. = 5.0%
P.C. = Sta. 193+24.76
P.T. = Sta. 199+08.46
P.I. = Sta. 196+20.71



CIVILTECH ENGINEERING, INC.
GREGORY J. HATLESTAD, S.E.



G. J. Hatlestad
GREGORY J. HATLESTAD, S.E.
081-005562

EXP 11/30/2012

DATE 1/27/2012

APPROVED
FOR STRUCTURAL ADEQUACY ONLY

J. Carl Papp (PE)
Engineer of Bridges and Structures

LEGEND

- A — Aerial Power Line
- Proposed Pipe Underdrain
- Proposed Storm Sewer
- ◆ Soil Boring

SEISMIC DATA

Seismic Performance Category (SPC) = A
Bedrock Acceleration Coefficient (A) = 0.04g
Site Coefficient = 1.0

DESIGN SPECIFICATIONS

2002 AASHTO Standard Spec. for Highway Bridges, 17th Ed.

DESIGN STRESSES

FIELD UNITS

$f'_c = 3,500$ psi
 $f_y = 60,000$ psi (Reinforcement)

LOADING HS20-44

Allow 50 psf for Future Wearing Surface.

GENERAL PLAN & LONGITUDINAL SECTION
GRAND AVENUE OVER MILLENNIUM TRAIL

F.A.P. RTE. 0541

SEC. 10-F3000-00-BT

LAKE COUNTY

STATION 198+20.25

STRUCTURE NUMBER 049-9003

GENERAL PLAN & LONGITUDINAL SECTION
GRAND AVENUE OVER MILLENNIUM TRAIL
STRUCTURE NO. 049-9003
SHEET NO. S1 OF S11 SHEETS

F.A.P. RTE.	SECTION	COUNTY	TOTAL SHEETS	SHEET NO.
0541	10-F3000-00-BT	LAKE	91	26
				CONTRACT NO.
				63665

STATE OF ILLINOIS
DEPARTMENT OF TRANSPORTATION

DRAWN	K. BOCHNOWSKI	REVISED	
DESIGNED	M. LANGE	REVISED	
CHECKED	G. HATLESTAD	REVISED	
DATE	JANUARY 27, 2012	REVISED	

CIVILTECH
450 E Devon Ave, Suite 300
Itasca, Illinois 60143
Tel: 630.773.3900 Fax: 630.773.3975
www.civiltechinc.com

3:59:40 PM J:\2322\cod\struct\Underpass\01.gpe_rev.dgn
 1/26/2012