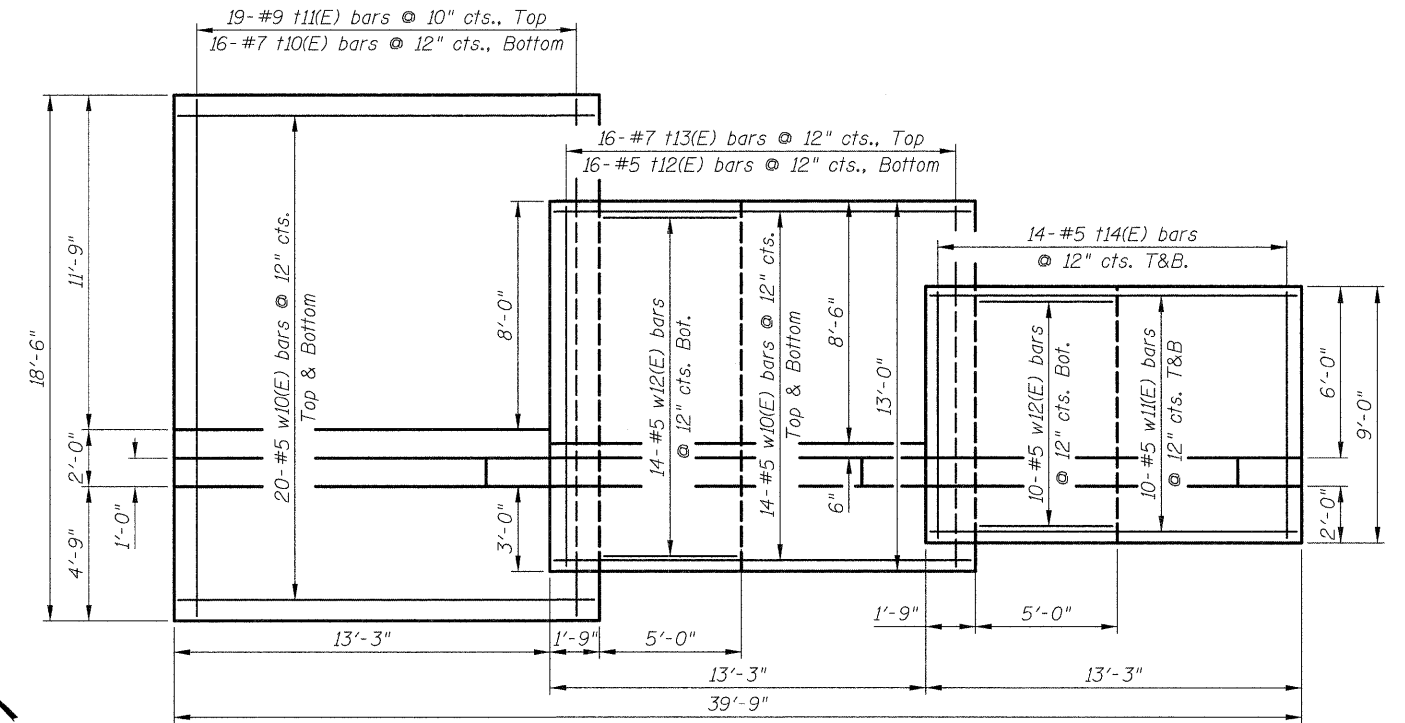


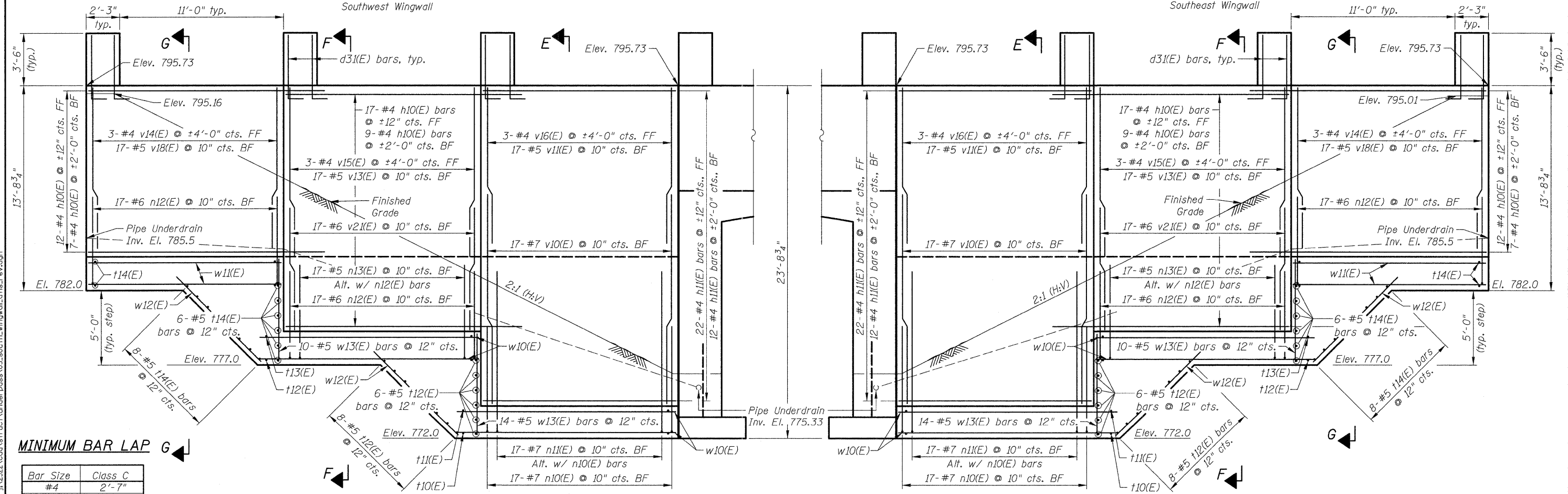
**PLAN**

Southwest Wingwall



**PLAN**

Southeast Wingwall



**ENTRANCE ELEVATION**

South Entrance

**MINIMUM BAR LAP**

Bar Size	Class C
#4	2'-7"
#5	3'-3"
#6	3'-10"
#7	5'-2"
#8	6'-9"
#9	8'-7"

Notes:  
 1. See sheet S7 for Bill of Material and Sections E-E, F-F, and G-G.  
 2. See sheet S8 for pilaster details and Bill of Material.

3/26/2012 3:59:55 PM J:\2322\cad\struct\undrpass\05\_south\_wingwall.dwg

**CIVILTECH**  
 450 E Devon Ave, Suite 300  
 Itasca, Illinois 60143  
 Tel: 630.773.3900 Fax: 630.773.3975  
 www.civiltechinc.com

DRAWN	- K. BOCHNOWSKI	REVISED	-
DESIGNED	- M. LANGE	REVISED	-
CHECKED	- G. HATLESTAD	REVISED	-
DATE	- JANUARY 27, 2012	REVISED	-

**STATE OF ILLINOIS**  
**DEPARTMENT OF TRANSPORTATION**

**SOUTH WINGWALLS**  
**GRAND AVENUE OVER MILLENNIUM TRAIL**  
**STRUCTURE NO. 049-9003**  
 SHEET NO. S5 OF S11 SHEETS

F.A.P. RTE.	SECTION	COUNTY	TOTAL SHEETS	SHEET NO.
0541	10-F3000-00-BT	LAKE	91	30
				CONTRACT NO.
ILLINOIS FED. AID PROJECT				