

R2-12
24"x36"
202+00
15' LT

ROAD CONSTRUCTION AHEAD
W20-1103(O)
36"x36"
192+00
15' RT

SPEED LIMIT 35
W3-5
36"x36"
195+50
15' RT

WORK ZONE
G20-5aP
24"x18"
R2-1
24"x30"
R2-6P
24"x18"
199+00
15' RT

WORK ZONE
G20-5aP
24"x18"
R2-1
24"x30"
R2-6P
24"x18"
221+50
25' RT

WORK ZONE
G20-5aP
24"x18"
R2-1
24"x30"
R2-6P
24"x18"
224+00
20' RT

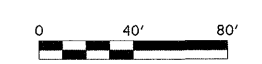
WORK ZONE
G20-5aP
24"x18"
R2-1
24"x30"
R2-6P
24"x18"
251+00
15' LT

SPEED LIMIT 35
W3-5
36"x36"
254+50
15' LT

ROAD CONSTRUCTION AHEAD
W20-1103(O)
36"x36"
258+00
15' LT

END WORK ZONE
SPEED LIMIT
R2-12
24"x36"
249+50
15' RT

LEGEND
TEMPORARY PAVEMENT



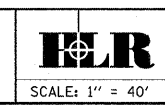
FILE NAME =
P:\070116\cod\phase 2\dwg\070116-sht-pre-stage1.dgn

USER NAME = #USER#
PLOT SCALE = #SCALE#
PLOT DATE = 1/5/2012

DESIGNED - CM
DRAWN - JM
CHECKED - CM
DATE - FEBRUARY 2009

REVISED -
REVISED -
REVISED -
REVISED -

STATE OF ILLINOIS
DEPARTMENT OF TRANSPORTATION



PRE-STAGE 1 PLANS - PLAINFIELD NAPERVILLE ROAD
PLAINFIELD NAPERVILLE RD AT 119TH ST/RODEO DR
SCALE: 1" = 40'
SHEET NO. 1 OF 1 SHEETS
STA. 202+50 TO STA. 232+00

F.A.U. RTE.	SECTION	COUNTY	TOTAL SHEETS	SHEET NO.
324	04-00036-22-TL	WILL	152	27
CONTRACT NO. 63671			ILLINOIS FED. AID PROJECT	