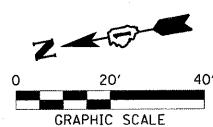
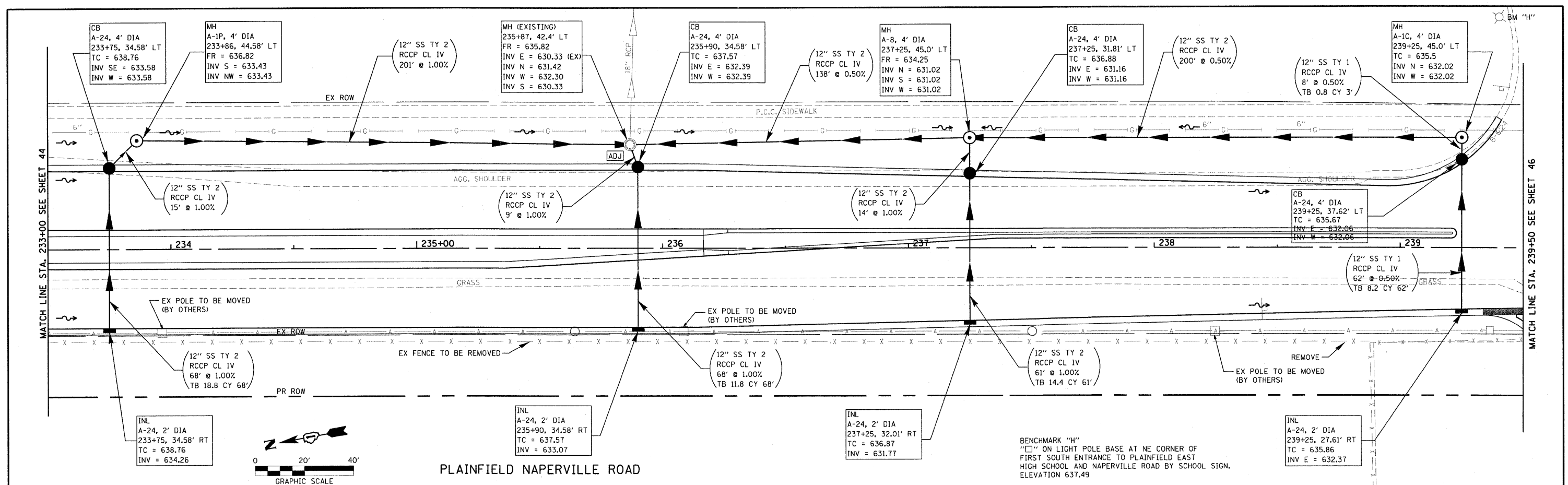
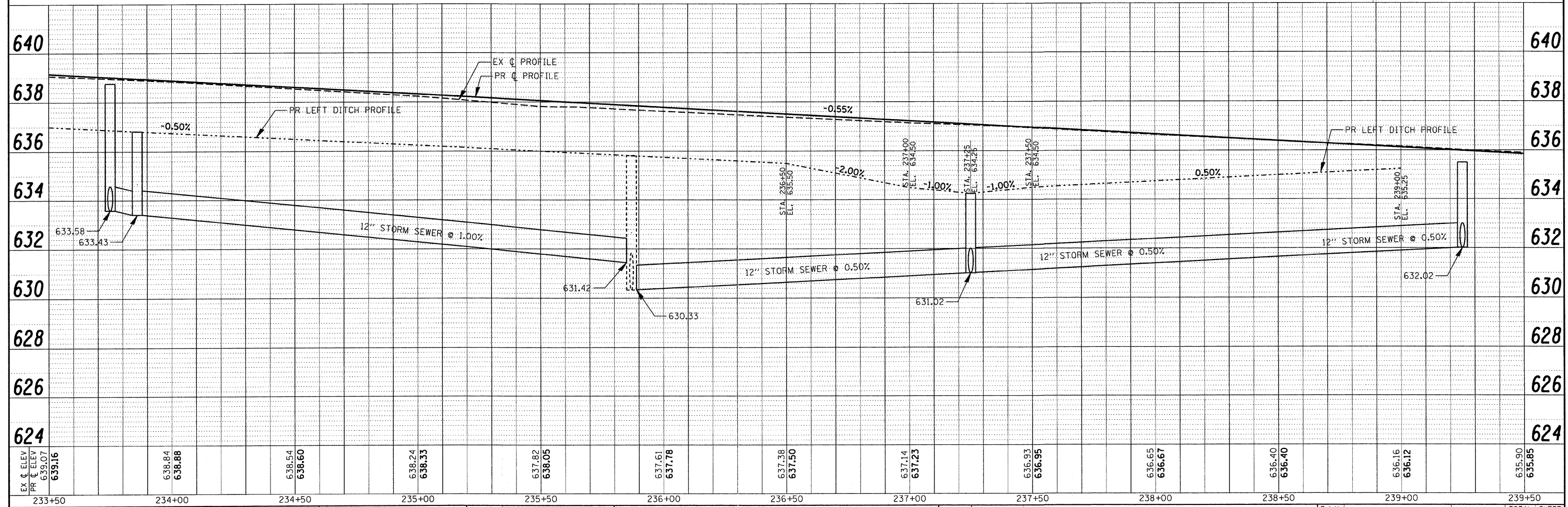


DATE: \_\_\_\_\_ BY: \_\_\_\_\_  
 SURVEYED: \_\_\_\_\_ PLOTTED: \_\_\_\_\_  
 NOTE BOOK NO. \_\_\_\_\_ CHECKED: \_\_\_\_\_  
 STRUCTURE NOTATIONS CHFD  
 CAD FILE NAME: \_\_\_\_\_

DATE: \_\_\_\_\_ BY: \_\_\_\_\_  
 SURVEYED: \_\_\_\_\_ PLOTTED: \_\_\_\_\_  
 NOTE BOOK NO. \_\_\_\_\_ CHECKED: \_\_\_\_\_  
 STRUCTURE NOTATIONS CHFD



BENCHMARK "H"  
 "H" ON LIGHT POLE BASE AT NE CORNER OF  
 FIRST SOUTH ENTRANCE TO PLAINFIELD EAST  
 HIGH SCHOOL AND NAPERVILLE ROAD BY SCHOOL SIGN.  
 ELEVATION 637.49



FILE NAME =	USER NAME = #USER#	DESIGNED - RN	REVISED -	<b>STATE OF ILLINOIS</b> <b>DEPARTMENT OF TRANSPORTATION</b>		UTILITY PLAN & PROFILE		F.A.U. RTE.	SECTION	COUNTY	TOTAL SHEETS	SHEET NO.
pr:\070116\cad\phase 2\dwg\070116-sht-Plain	pr:\pp06.dgn	DRAWN - JH	REVISED -			324	04-00036-22-TL	WILL	152	45		
PLOT SCALE = #SCALE#	CHECKED - RN	REVISOR -	REVISED -			CONTRACT NO. 63671						
PLOT DATE = 12/28/2011	DATE - FEBRUARY 2009	REVISED -	REVISED -			ILLINOIS FED. AID PROJECT						