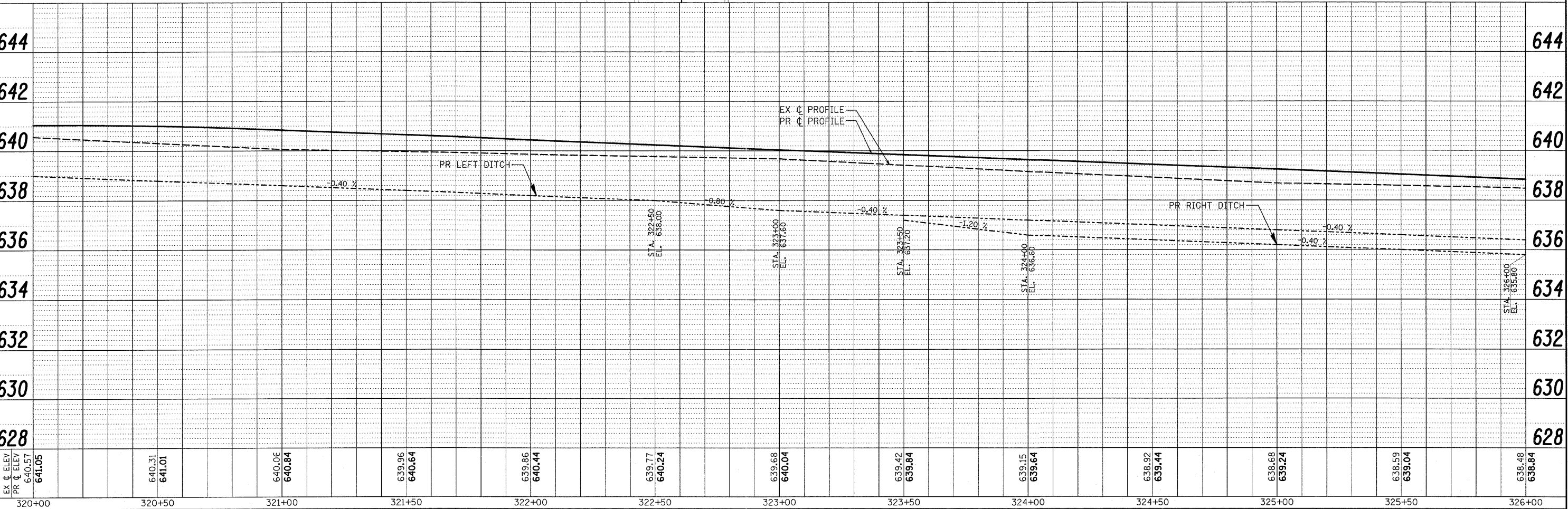
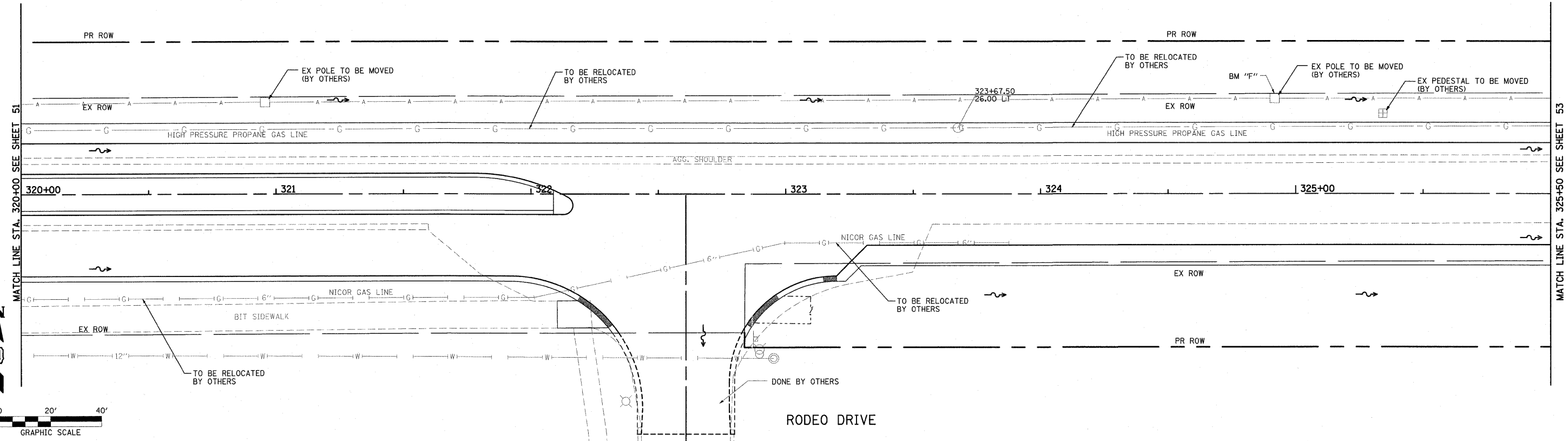


BENCHMARK "F"
RR SPIKE IN 7TH PP EAST OF NAPERVILLE PLAINFIELD ROAD
ON NORTH SIDE OF 119TH STREET.
ELEVATION 639.77



EX C ELEV PR C ELEV	640.57 641.05	640.31 641.01	640.06 640.84	639.96 640.64	639.86 640.44	639.77 640.24	639.68 640.04	639.42 639.84	639.15 639.64	638.92 639.44	638.68 639.24	638.59 639.04	638.48 638.84
STATION	320+00	320+50	321+00	321+50	322+00	322+50	323+00	323+50	324+00	324+50	325+00	325+50	326+00

DATE	BY
REVISIONS	
NO.	DESCRIPTION
1	ISSUED FOR PERMITS
2	REVISED
3	REVISED
4	REVISED
5	REVISED
6	REVISED
7	REVISED
8	REVISED
9	REVISED
10	REVISED

DATE	BY
REVISIONS	
NO.	DESCRIPTION
1	ISSUED FOR PERMITS
2	REVISED
3	REVISED
4	REVISED
5	REVISED
6	REVISED
7	REVISED
8	REVISED
9	REVISED
10	REVISED

STATE OF ILLINOIS
DEPARTMENT OF TRANSPORTATION



UTILITY PLAN & PROFILE
PLAINFIELD NAPERVILLE RD AT 119TH ST/RODEO DR

F.A.U. R.T.E.	SECTION	COUNTY	TOTAL SHEETS	SHEET NO.
3767	04-00036-22-TL	WILL	152	52
CONTRACT NO. 63671			ILLINOIS FED. AID PROJECT	

SCALE: 1" = 20'
SHEET NO. 6 OF 7 SHEETS STA. 320+00 TO STA. 326+00