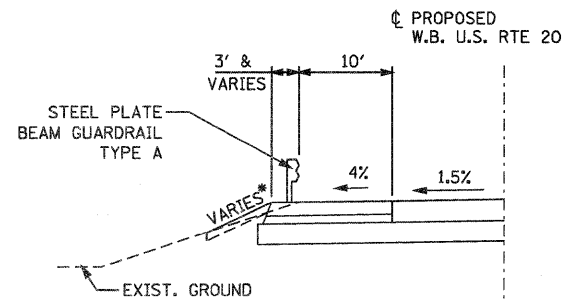
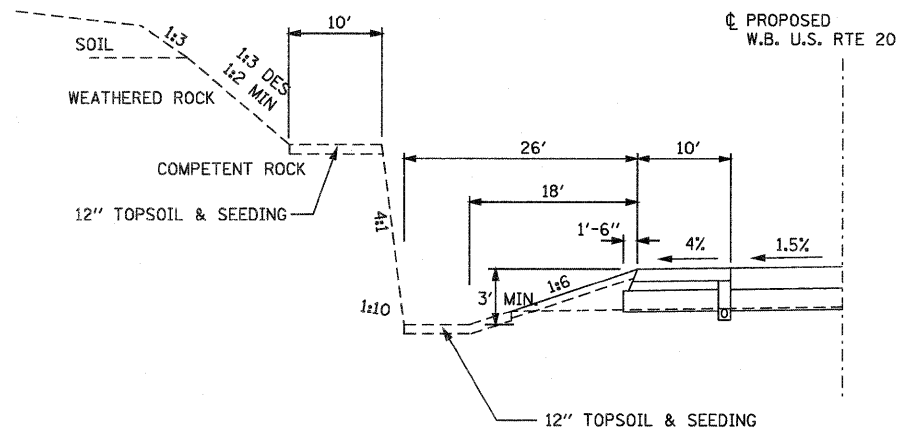


U.S. ROUTE 20 MAINLINE
TYPICAL HIGH FILL SECTION
(FILL HEIGHT > 30' AND USED TO MINIMIZE WETLAND IMPACTS)
STA. 544+38.73 TO STA. 578+62.43

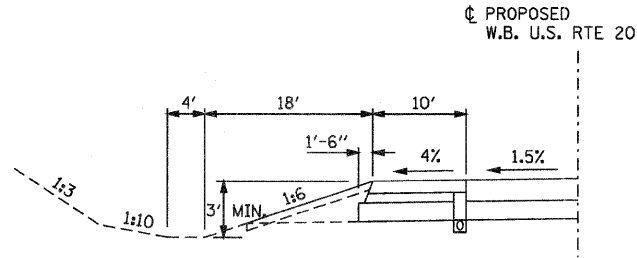


U.S. ROUTE 20 MAINLINE
TYPICAL SECTION WITH GUARDRAIL
STA. 504+61.34 TO STA. 509+51.34
STA. 516+80.41 TO STA. 520+45.41
STA. 596+26.41 TO STA. 600+41.31

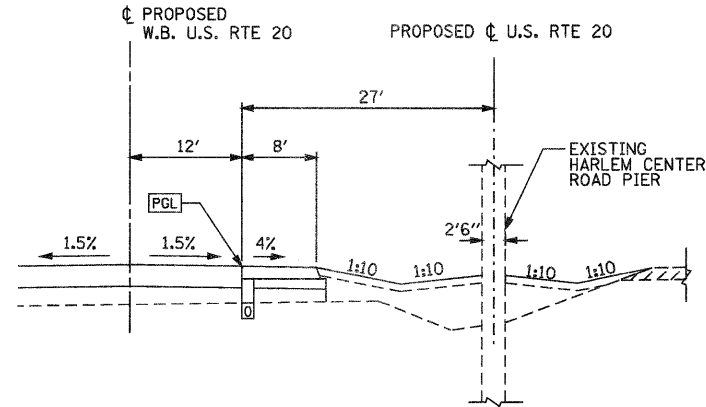
NOTE:
* FOR SLOPE STEEPER THAN 1:3, AND THE DISTANCE FROM BACK OF POST IS LESS THAN 24", 9' POSTS SHALL BE USED. (SEE HIGHWAY STANDARD 630001-10, SECTION A-A.)



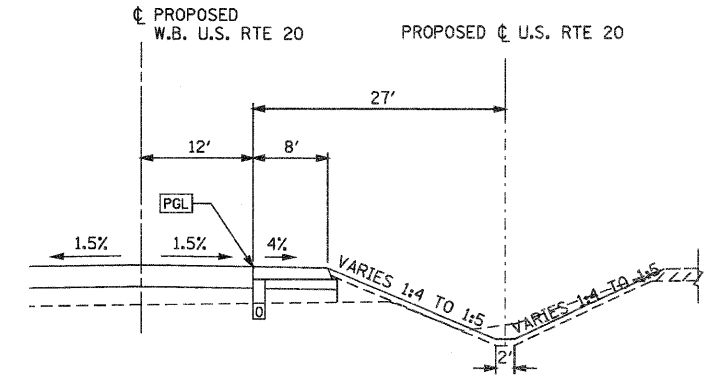
U.S. ROUTE 20 MAINLINE
TYPICAL ROCK CUT SECTION
STA. 634+00.00 TO STA. 638+00.00



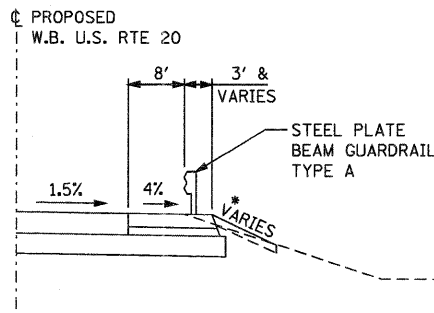
U.S. ROUTE 20 MAINLINE
CUT SECTION
STA. 478+00.00 TO STA. 502+00.00
STA. 507+00.00 TO STA. 512+00.00
STA. 519+00.00 TO STA. 530+00.00
STA. 604+00.00 TO STA. 634+00.00



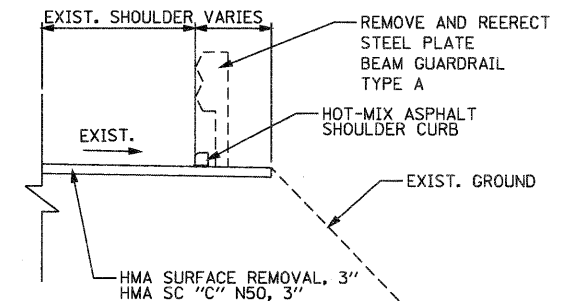
U.S. ROUTE 20 MAINLINE TYPICAL SECTION
SPECIAL DITCH AROUND HARLEM CENTER ROAD PIER
STA. 504+25 TO STA. 506+05



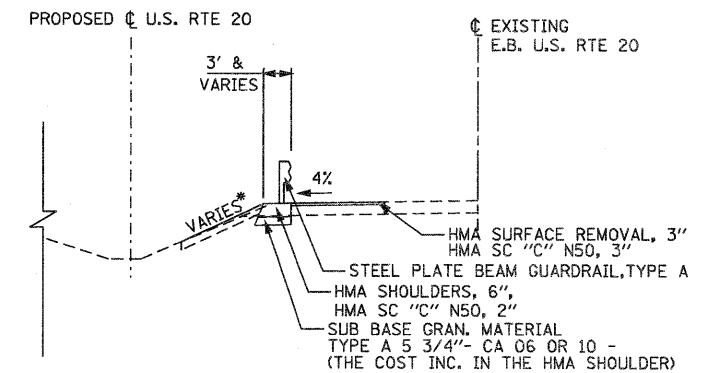
U.S. ROUTE 20 MAINLINE TYPICAL SECTION
SPECIAL DITCH AROUND HARLEM CENTER ROAD PIER
STA. 504+00 TO STA. 504+25
STA. 506+25 TO STA. 508+00



U.S. ROUTE 20 MAINLINE
TYPICAL SECTION WITH GUARDRAIL
STA. 505+21.89 TO STA. 509+11.89
STA. 544+61.25 TO STA. 549+08.72
STA. 570+77.75 TO STA. 575+31.55



U.S. ROUTE 20 EB MAINLINE
TYPICAL DETAIL FOR BITUMINOUS CURB
STA. 570+85 TO STA. 571+25



U.S. ROUTE 20 MAINLINE
TYPICAL SECTION WITH GUARDRAIL
STA. 502+02.60 TO STA. 505+02.60 (EB)

- NOTES:
1. IF ROCK CUT IS GREATER THAN 8 FOOT HEIGHT, A 10 FOOT BENCH IS REQUIRED AT THE TOP
 2. IF ROCK CUT EXCEEDS 20 FOOT HEIGHT, A 10 FOOT BENCH IS REQUIRED AT 1/2 THE TOTAL HEIGHT, IN ADDITION TO THE BENCH AT THE TOP
 3. WEIGHT OF BITUMINOUS MATERIAL = 112 LBS/IN./SY.

T:\18184\CA\1\PAV\Plan\28PA\typ05.dgn

PARSONS BRINCKERHOFF
280 West Monroe St., Suite 200
Chicago, IL 60606, (312) 783-8160

USER NAME = MMS	DESIGNED - MMS	REVISED -
PLOT SCALE = 10.00' / IN.	DRAWN - MMS	REVISED -
PLOT DATE = 9/28/11	CHECKED - RMH	REVISED -
	DATE -	REVISED -

**STATE OF ILLINOIS
DEPARTMENT OF TRANSPORTATION**

TYPICAL SECTIONS
U.S. 20 MAINLINE

SCALE: NONE SHEET NO. 5 OF 5 SHEETS STA. TO STA.

F.A. RTE.	SECTION	COUNTY	TOTAL SHEETS	SHEET NO.
301	177-2-1	STEPHENSON	211	14
FINAL SUBMITTAL			CONTRACT NO. 64860	
[ILLINOIS] FED. AID PROJECT P-92-014-03				

Rev. 7-22-12