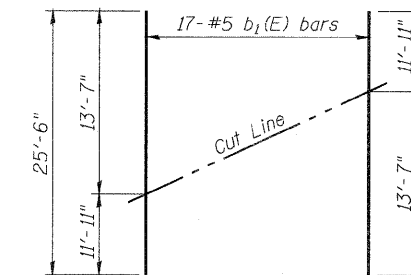


FIELD CUTTING DIAGRAM
Order b(E) bars full length. Cut as shown and use remainder of bars in opposite approach slab.



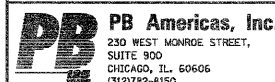
FIELD CUTTING DIAGRAM
Order b₁(E) bars full length. Cut as shown and use remainder of bars in opposite approach slab.

BILL OF MATERIAL

Bar	No.	Size	Length	Shape
a(E)	92	#5	9'-8"	—
b(E)	17	#5	24'-11"	—
b ₁ (E)	17	#5	25'-6"	—
d(E)	24	#5	2'-0"	—
Approach Slab Removal			Sq. Yd.	53
P.C. Concrete Bridge Approach Shoulder Pavement			Sq. Yd.	53

Note:
Reinforcement bars are shown for information only.

T:\16814A\Struct\Cadd\Approaches repair\US20_RRBR_app-04-dt.dgn
17-FEB-2012 11:35



FILE NAME = US20_RRBR_app-04-dt.dgn
PLOT SCALE = NONE
PLOT DATE = 2/17/2012

DESIGNED - J. Muhammad
CHECKED - M. Shaikh
DRAWN - D. C. Patel
CHECKED - J. Gralnowl

REVISED -
REVISED -
REVISED -
REVISED -

**STATE OF ILLINOIS
DEPARTMENT OF TRANSPORTATION**

**BRIDGE APPROACH PAVEMENT
(DRAIN DETAIL)**

SHEET NO. 2 OF 2 SHEETS

F.A.P. RTE.	SECTION	COUNTY	TOTAL SHEETS	SHEET NO.
301	177-2-1	STEPHENSON	211	104E
CONTRACT NO. 64860			Added 2-22-12	

ILLINOIS FED. AID PROJECT