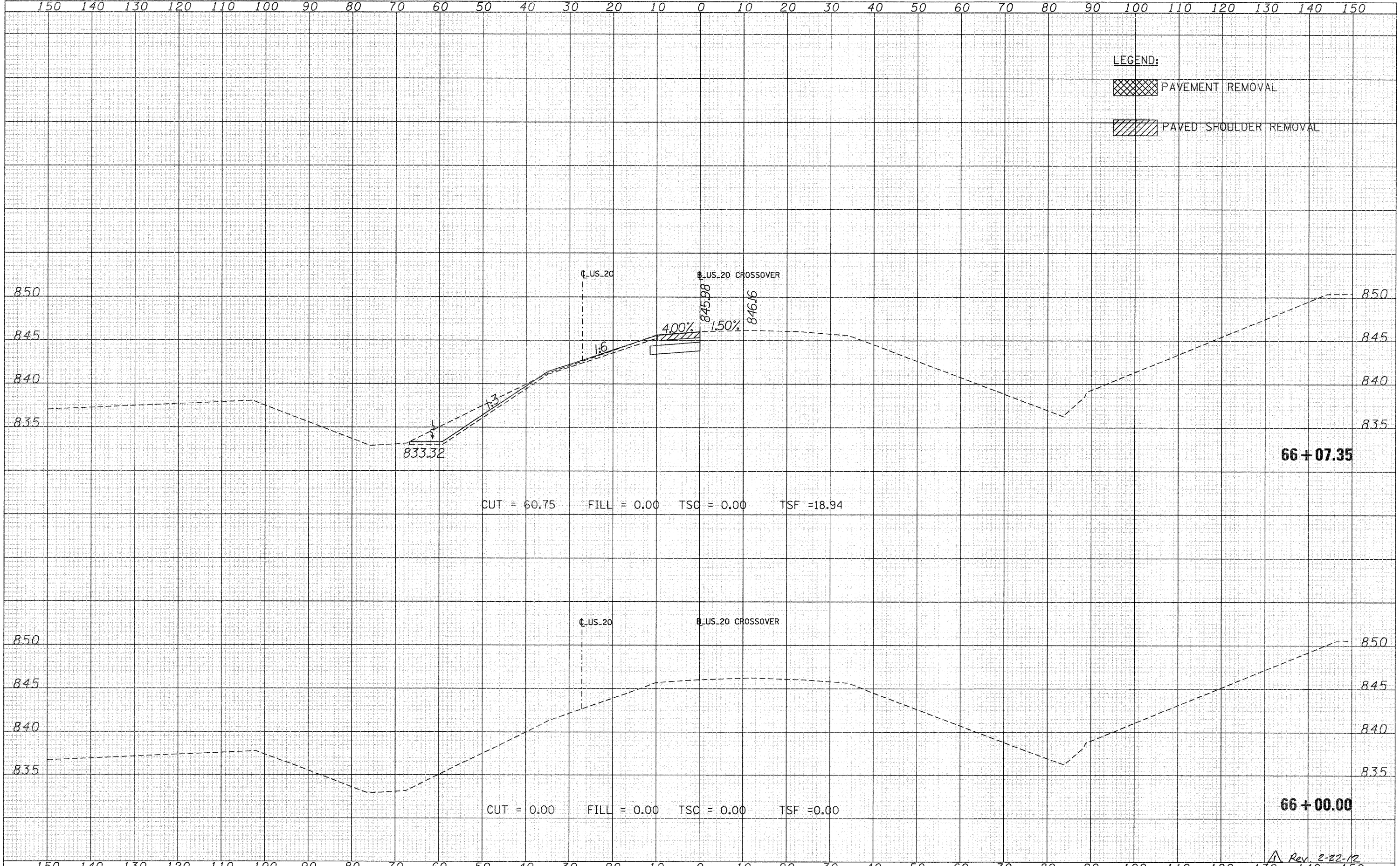


DATE	
BY	
SURVEYED	
PLOTTED	
NOTE BOOK	
AREAS CHECKED	
NO.	

DATE	
BY	
SURVEYED	
PLOTTED	
NOTE BOOK	
AREAS CHECKED	
NO.	



FILE NAME = T:\18814\civil\PAV_Xshta\28PAV_XDMS-sheets.dgn	USER NAME = MMS	DESIGNED -	REVISED -	<b>STATE OF ILLINOIS DEPARTMENT OF TRANSPORTATION</b>	<b>CROSS SECTIONS US 20 CROSSOVER</b>		F.A.P. RTE. 301	SECTION 177-2-1	COUNTY STEPHENSON	TOTAL SHEETS 211	SHEET NO. 122	
PLOT SCALE = 10.00' / IN.	CHECKED -	REVISED -	REVISED -		SCALE:	SHEET NO. OF SHEETS	STA. 66+00.00 TO STA. 66+07.35	CONTRACT NO. 64860				
PLOT DATE = 9/28/11	DATE -	REVISED -	REVISED -		ILLINOIS FED. AID PROJECT							
Rev. 2-22-12												