

F.A.P. RTE.	SECTION	COUNTY	TOTAL SHEETS	SHEET NO.
301		JO DAVIESS	309	1

\*(43B, 44B, 44HB, 45B)D

D-92-032-07

STATE OF ILLINOIS  
DEPARTMENT OF TRANSPORTATION  
DIVISION OF HIGHWAYS

# PROPOSED HIGHWAY PLANS

FAP ROUTE 301 (US 20)  
SECTION (43B, 44B, 44HB, 45B)D  
PROJECT: **ACNHF-ACBHF-0301(071)**  
BRIDGE DECK REPLACEMENT  
JO DAVIESS COUNTY  
C-92-126-10

**INDEX OF SHEETS**

SEE SHEET NO. 2

**DECK REPLACEMENT  
OVER LITTLE MEMONINEE RIVER**  
STA. 328 + 90.74 (WB)  
SN 043-0005  
PROJECT BEGINS STA. 324 + 82  
PROJECT ENDS STA. 338 + 08

**DECK REPLACEMENT  
OVER MEMONINEE RIVER**  
STA. 225 + 31.03 (WB)  
SN 043-0003  
PROJECT BEGINS STA. 222 + 40  
PROJECT ENDS STA. 229 + 69

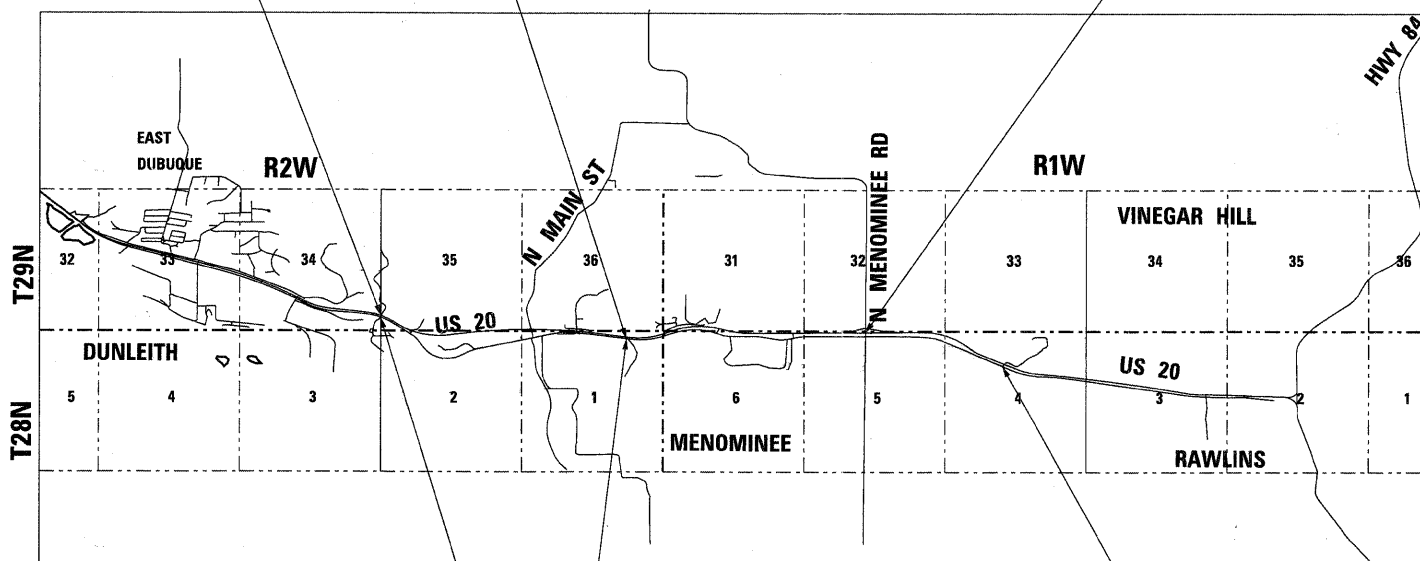
**DECK REPLACEMENT  
OVER MEMONINEE ROAD**  
STA. 414 + 42.31 (WB)  
SN 043-0006  
PROJECT BEGINS STA. 412 + 90  
PROJECT ENDS STA. 419 + 11

**HIGHWAY STANDARDS**

SEE SHEET NO. 2

**DISTRICT 2 STANDARDS**

SEE SHEET NO. 2

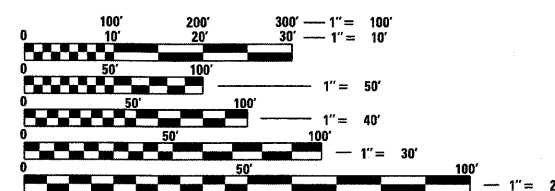


GROSS LENGTH = 5,652.00 FT. = 1.08 MILE  
NET LENGTH = 5,652.00 FT. = 1.08 MILE

**DECK REPLACEMENT  
OVER MEMONINEE RIVER**  
STA. 225 + 91.23 (EB)  
SN 043-0002  
PROJECT BEGINS STA. 221 + 04  
PROJECT ENDS STA. 228 + 60.00

**DECK REPLACEMENT OVER  
LITTLE MEMONINEE RIVER**  
STA. 337 + 15.59 (EB)  
SN 043-0004  
IMPROVEMENT BEGINS STA. 332 + 72  
PROJECT BEGINS STA. 333 + 11.50  
PROJECT /IMPROVEMENT ENDS STA. 344 + 33

**DECK REPLACEMENT  
OVER SINSINAWA RIVER**  
STA. 487 + 04.59 (EB)  
SN 043-0007  
PROJECT BEGINS STA. 482 + 06  
PROJECT ENDS STA. 492 + 42



FULL SIZE PLANS HAVE BEEN PREPARED USING STANDARD ENGINEERING SCALES. REDUCED SIZED PLANS WILL NOT CONFORM TO STANDARD SCALES. IN MAKING MEASUREMENTS ON REDUCED PLANS, THE ABOVE SCALES MAY BE USED.

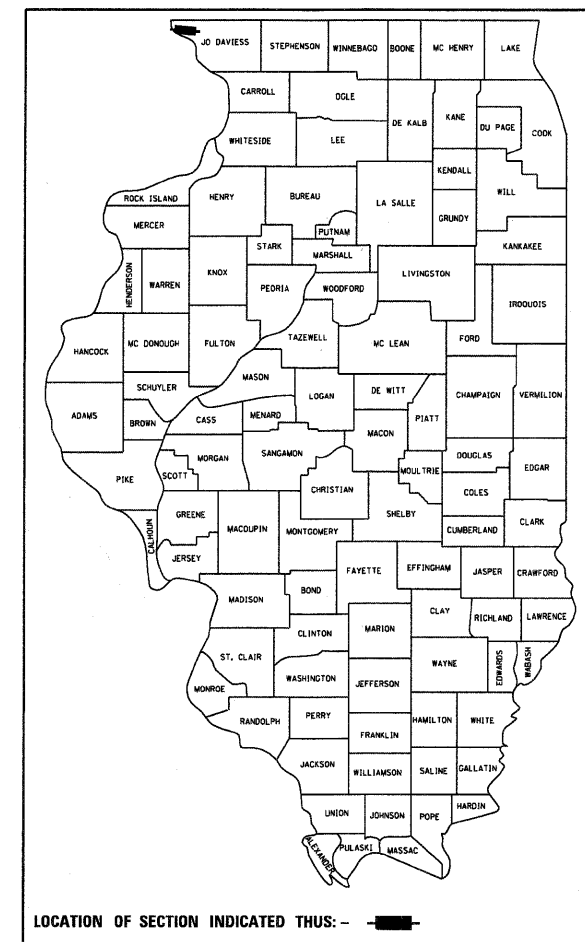
J.U.L.I.E.  
JOINT UTILITY LOCATION INFORMATION FOR EXCAVATION  
1-800-892-0123  
OR 811

PROJECT ENGINEER: MASOOD AHMAD  
PROJECT MANAGER: SAMEER ABDULLAH (815) 284-5935  
CONTRACT NO. 64C94  
CATALOG NO.

**WHKS & CO.**  
ENGINEERING  
1701 ROUTE 35 NORTH  
EAST DUBUQUE, IL 61025  
(815) 747-8833  
DESIGN FIRM #184001036



James A. Colbrooke, Jr. 12-1-11  
Expires: 11/30/2013



FUNCTIONAL CLASSIFICATION:  
OTHER PRINCIPAL ARTERIAL  
DESIGN SPEED: 65 MPH  
POSTED SPEED: 65 MPH  
ADT: 10,025 (2012); 14,200 (2032)  
14.7% TRUCKS

STATE OF ILLINOIS  
DEPARTMENT OF TRANSPORTATION  
DIVISION OF HIGHWAYS

SUBMITTED Dec 12 2011

*Eric S. Thibault*  
DEPUTY DIRECTOR OF HIGHWAYS, REGION ENGINEER

February 3, 2012  
*John D. Bauannelli, P.E.*  
ENGINEER OF DESIGN AND ENVIRONMENT

February 3, 2012  
*William B. Frey, Jr.*  
DIRECTOR OF HIGHWAYS, CHIEF ENGINEER

**PRINTED BY THE AUTHORITY  
OF THE STATE OF ILLINOIS**

CONSULTANT: TONY ZELINSKAS (815) 747-8833

PROJECT ENGINEER: MASOOD AHMAD

DISTRICT TWO - BUREAU OF DESIGN  
SENIOR SQUAD LEADER: SAMEER ABDULLAH (815) 284-5935