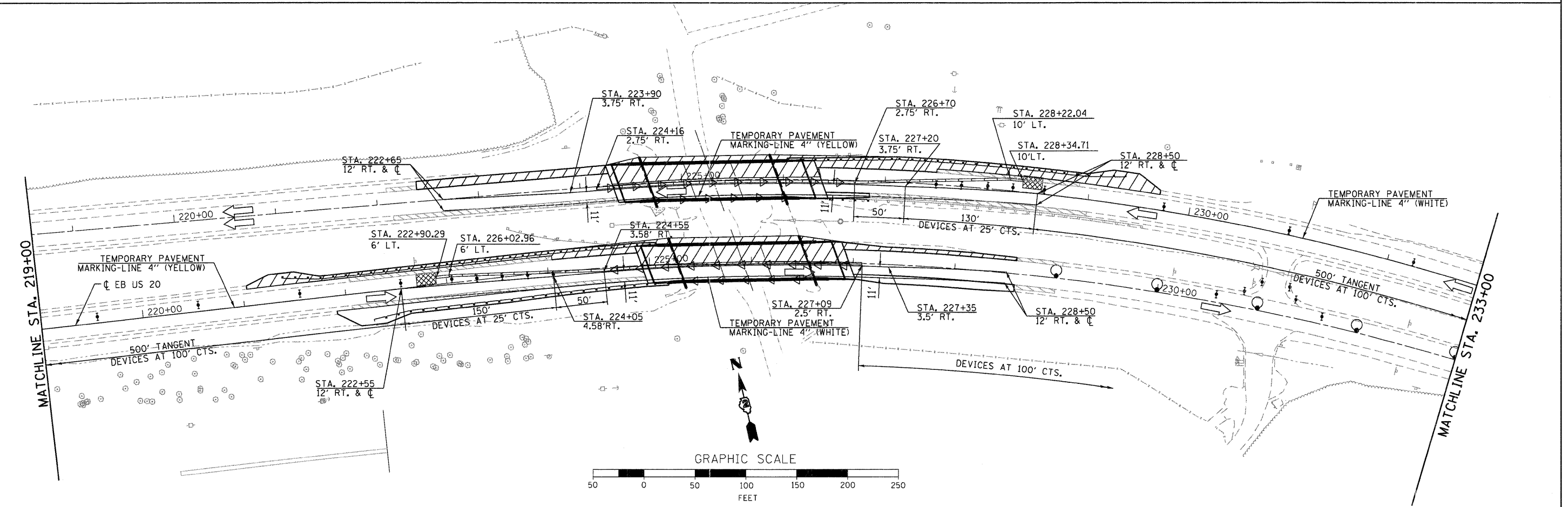
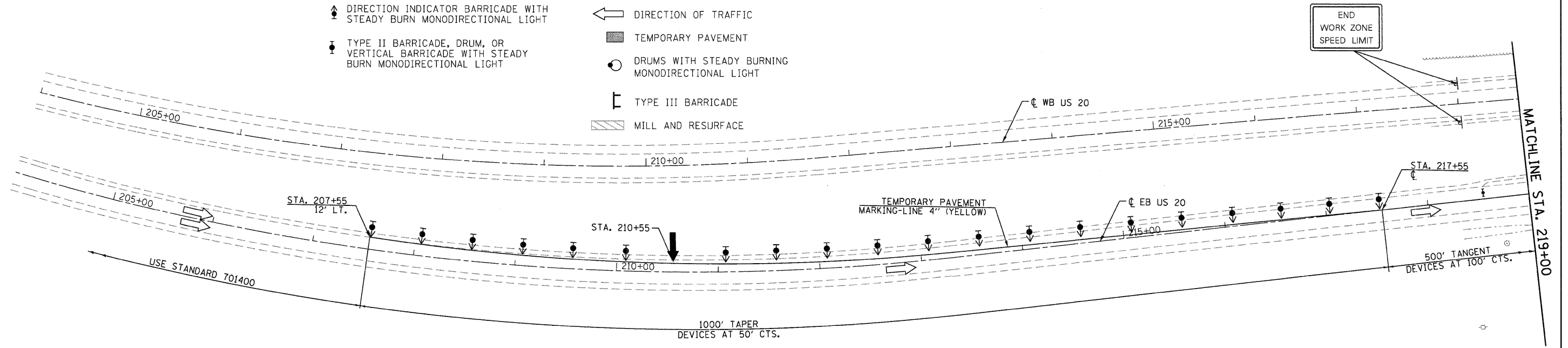


LEGEND

- ↑ ARROW BOARD
- ▨ WORK AREA
- ⊥ SIGN
- ↑ DIRECTION INDICATOR BARRICADE WITH STEADY BURN MONODIRECTIONAL LIGHT
- ⊥ TYPE II BARRICADE, DRUM, OR VERTICAL BARRICADE WITH STEADY BURN MONODIRECTIONAL LIGHT
- TEMPORARY CONCRETE BARRIER
- ◁ MONODIRECTIONAL BARRIER WALL/GUARDRAIL MARKER
- ▩ IMPACT ATTENUATOR
- ← DIRECTION OF TRAFFIC
- ▨ TEMPORARY PAVEMENT
- DRUMS WITH STEADY BURNING MONODIRECTIONAL LIGHT
- ⊥ TYPE III BARRICADE
- ▨ MILL AND RESURFACE

NOTES:
1. TEMPORARY CONCRETE BARRIER OFFSETS ARE MEASURED TO THE TRAFFIC SIDE OF THE WALL.



USER NAME = gjemerson	DESIGNED JAC	REVISED -		1701 ROUTE 35 NORTH EAST DUBUQUE, IL 61025 (815) 747-8833 DESIGN FIRM #184001036	STATE OF ILLINOIS DEPARTMENT OF TRANSPORTATION	US 20 TRAFFIC CONTROL PLANS (STAGE 2) SN 043-0002 & SN 043-0003	F.A.P. RTE. 301	SECTION 43B,44B,44HB,45B)D	COUNTY JO DAVIESS	TOTAL SHEETS 309	SHEET NO. 60		
FILE NAME = Z03207-shr-staging-GMBOXED3.dwg	DRAWN JAC	REVISED -			SCALE: 1"=50'			SHEET NO. 1 OF 2 SHEETS	STA. 204+00 TO STA. 233+00	CONTRACT NO. 64C94			
PLT DATE = 12/6/2011	CHECKED -	REVISED -			ILLINOIS FED. AID PROJECT								
PLT TIME = 10:16:41 AM													