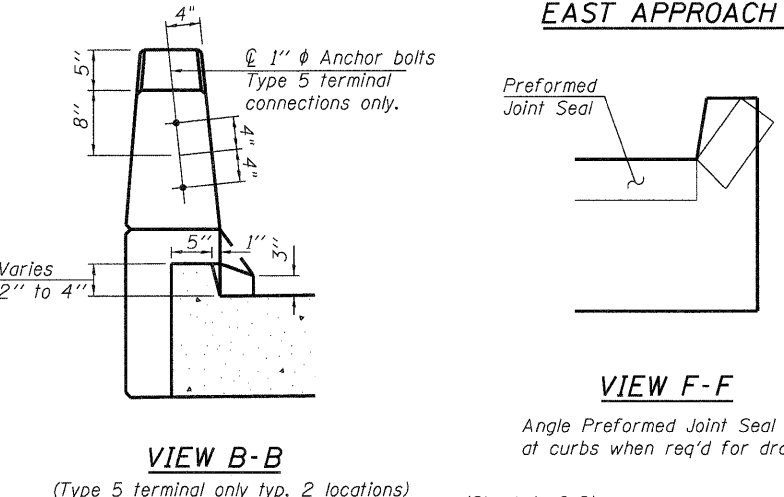
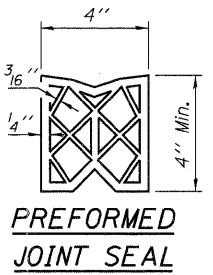
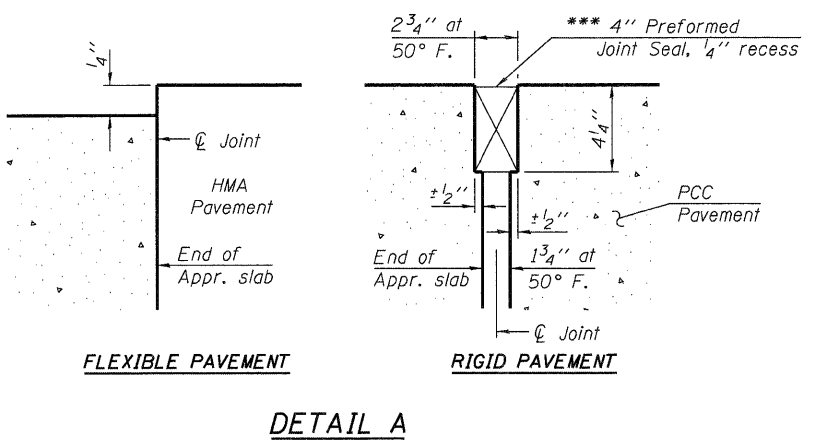
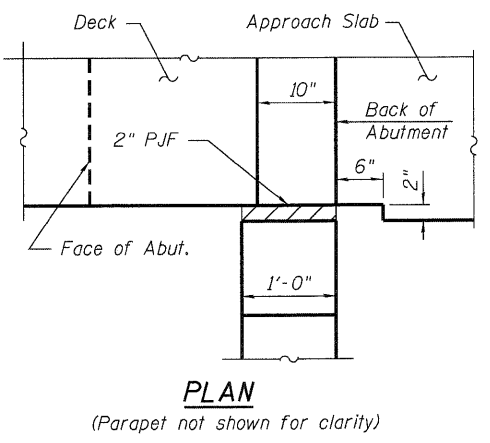


Note:  
 See sheet 17 of 27 for Sections C-C & D-D and View E-E.  
 $a_5(E)$ ,  $a_6(E)$ ,  $a_7(E)$  and  $a_8(E)$  bar spacings measured along  $\phi$  Structure.



\* Tilt #9  $b_4(E)$  bars as required to maintain clearance.  
 \*\* Space between  $a_5(E)$  and  $a_7(E)$  bars, typ. ea. parapet.  
 \*\*\* Cast included with Concrete Superstructure.  
 \*\*\*\* See sheet 2 of 27 for location of  $\phi$  structure relative to local Tangent

USER NAME = dheberling	DESIGNED - BRD	REVISED -		7018 KINGSMILL CT. SPRINGFIELD, IL (217) 483-9457 DESIGN FIRM #184001036	<b>STATE OF ILLINOIS</b> <b>DEPARTMENT OF TRANSPORTATION</b>	<b>BRIDGE APPROACH SLAB DETAILS</b> <b>STRUCTURE NO. 043-0004 &amp; 043-0005</b>	F.A.P. RTE.	SECTION	COUNTY	TOTAL SHEETS	SHEET NO.
FILE NAME = 0430004&5-64C94.dwg	CHECKED - SDS	REVISED -					301	(43B, 44B, 44HB, 45B/D)	JO DAVIESS	309	129
PLOT DATE = 12/6/2011	DRAWN - DLH	REVISED -					CONTRACT NO. 64C94				
PLOT TIME = 10:07:17 AM	CHECKED - BRD/SDS	REVISED -					ILLINOIS FED. AID PROJECT				

SHEET NO. 16 OF 27 SHEETS