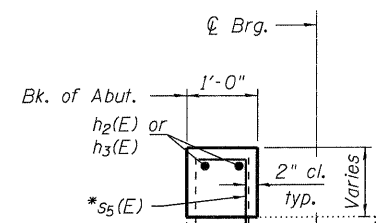
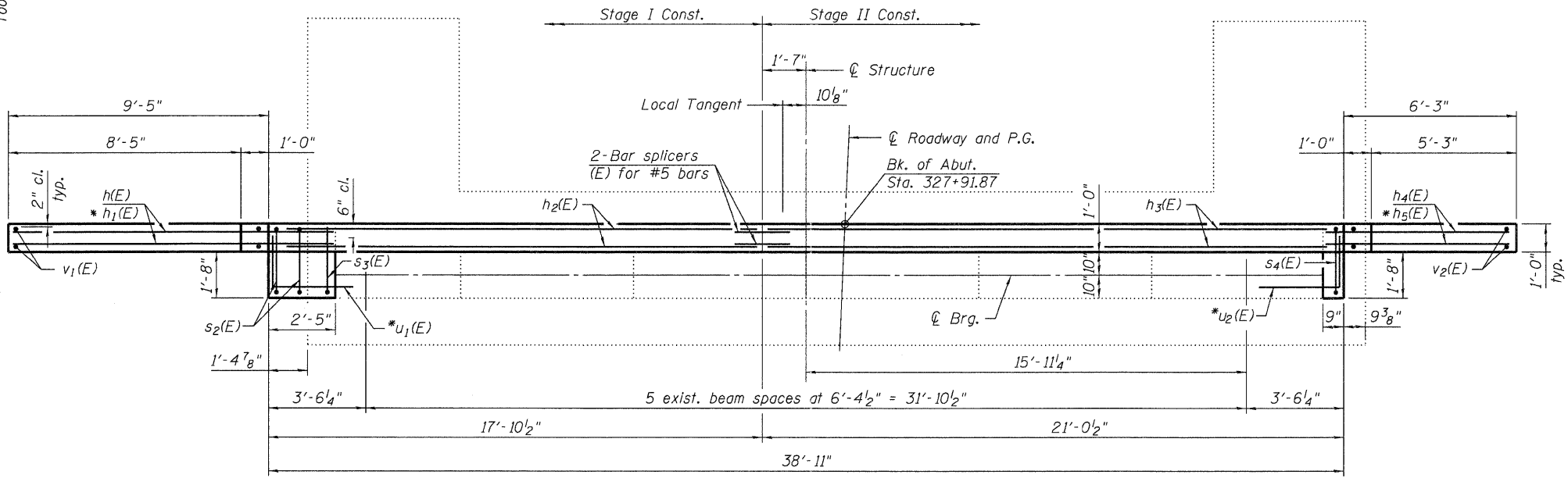


*14- #5 h₁(E) bars at 6" cts. Each Face Bars grouted into existing footing to be cut to fit.

*12- #5 h₅(E) bars at 6" cts. Each Face Bars grouted into existing footing to be cut to fit.



PLAN

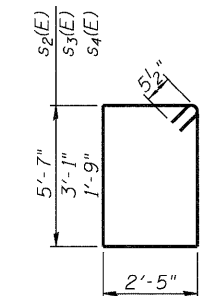
Note:
* Drill and grout bars according to Article 584 of The Standard Specifications, 9" min. embedment and 4" min. clear cover on grouted bars except where noted.

**WEST ABUTMENT
BILL OF MATERIAL**

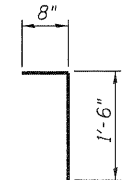
Bar	No.	Size	Length	Shape
h(E)	10	#5	9'-7"	—
h ₁ (E)	28	#5	11'-7"	—
h ₂ (E)	2	#5	17'-7"	—
h ₃ (E)	2	#5	20'-9"	—
h ₄ (E)	10	#5	6'-6"	—
h ₅ (E)	24	#5	7'-7"	—
s ₂ (E)	2	#5	16'-11"	□
s ₃ (E)	1	#5	11'-11"	□
s ₄ (E)	1	#5	9'-3"	□
s ₅ (E)	41	#5	2'-2"	┘
u ₁ (E)	7	#6	4'-9"	┘
u ₂ (E)	3	#6	3'-2"	┘
v ₁ (E)	10	#5	19'-5"	—
v ₂ (E)	7	#5	16'-6"	—
Structure Excavation			Cu. Yd.	103
Concrete Structures			Cu. Yd.	7.8
Reinforcement Bars, Epoxy Coated			Pound	1,330

SECTION A-A

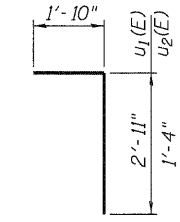
BAR s₂(E), s₃(E) & s₄(E)



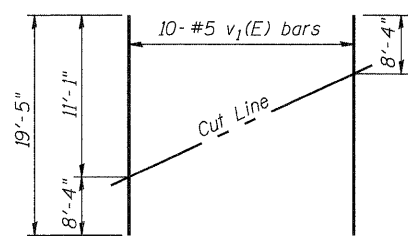
BAR s₅(E)



BAR u₁(E) & u₂(E)

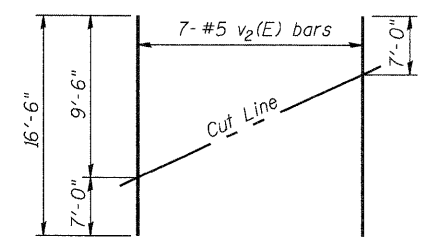


FIELD CUTTING DIAGRAM



Order v₁(E) full length. Cut as shown and use remainder of bars in opposite face.

FIELD CUTTING DIAGRAM



Order v₂(E) full length. Cut as shown and use remainder of bars in opposite face.

USER NAME = dheberling	DESIGNED - BRD	REVISED -
FILE NAME = 04300045-64C94.dwg	CHECKED - SDS	REVISED -
PLOT DATE = 12/6/2011	DRAWN - DLH	REVISED -
PLOT TIME = 10:07:39 AM	CHECKED - BRD/SDS	REVISED -

WHKS & co.
ENGINEERING
7018 KINGSMILL CT.,
SPRINGFIELD, IL
(217) 483-9457
DESIGN FIRM #184001036

**STATE OF ILLINOIS
DEPARTMENT OF TRANSPORTATION**

**WEST ABUTMENT
STRUCTURE NO. 043-0005**

SHEET NO. 23 OF 27 SHEETS

F.A.P. RTE.	SECTION	COUNTY	TOTAL SHEETS	SHEET NO.
301	(43B, 44B, 44HB, 45BID)	JO DAVIESS	309	136
CONTRACT NO. 64C94			ILLINOIS FED. AID PROJECT	