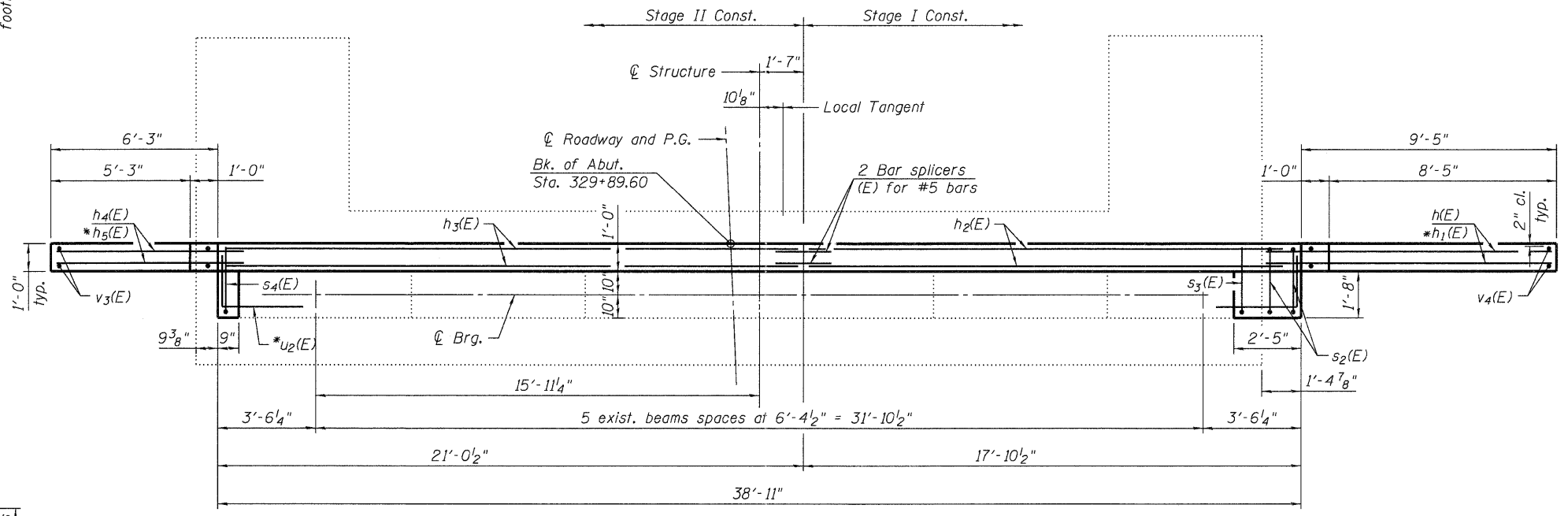


ELEVATION

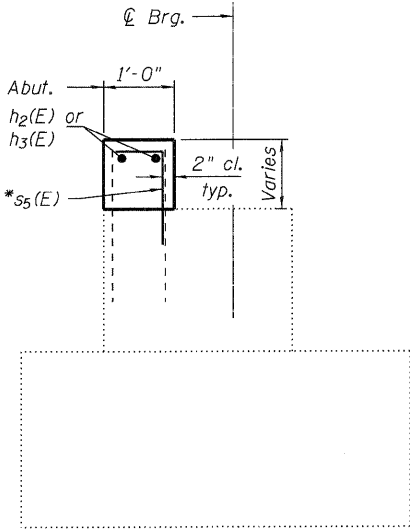


PLAN

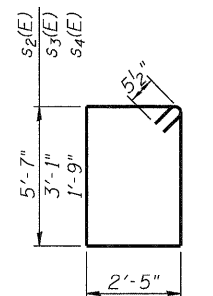
**EAST ABUTMENT
BILL OF MATERIAL**

Bar	No.	Size	Length	Shape
h(E)	10	#5	9'-7"	—
h1(E)	28	#5	11'-7"	—
h2(E)	2	#5	17'-7"	—
h3(E)	2	#5	20'-9"	—
h4(E)	10	#5	6'-6"	—
h5(E)	24	#5	7'-7"	—
s2(E)	2	#5	16'-11"	□
s3(E)	1	#5	11'-11"	□
s4(E)	1	#5	9'-3"	□
s5(E)	41	#5	2'-2"	┘
u1(E)	7	#6	4'-9"	┘
u2(E)	3	#6	3'-2"	┘
v3(E)	7	#5	15'-9"	—
v4(E)	10	#5	19'-0"	—
Structure Excavation			Cu. Yd.	100
Concrete Structures			Cu. Yd.	7.7
Reinforcement Bars, Epoxy Coated			Pound	1,320

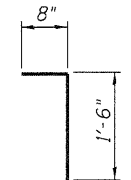
Note:
* Drill and grout bars according to Article 584 of The Standard Specifications, 9" min. embedment and 4" min. clear cover on grouted bars except where noted.



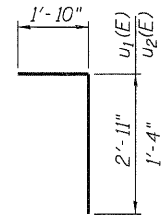
SECTION A-A



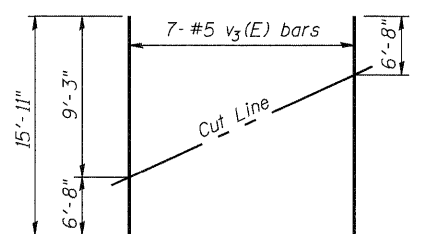
BAR s2(E), s3(E) & s4(E)



BAR s5(E)

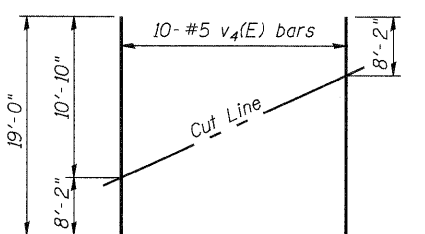


BAR u1(E) & u2(E)



FIELD CUTTING DIAGRAM

Order v3(E) full length. Cut as shown and use remainder of bars in opposite face.



FIELD CUTTING DIAGRAM

Order v4(E) full length. Cut as shown and use remainder of bars in opposite face.

USER NAME = dheberling	DESIGNED - BRD	REVISED -
FILE NAME = 04300485-64C94.dgn	CHECKED - SDS	REVISED -
PLOT DATE = 12/6/2011	DRAWN - DLH	REVISED -
PLOT TIME = 10:07:42 AM	CHECKED - BRD/SDS	REVISED -

WHKS & CO.
ENGINEERING
7018 KINGSMILL CT.,
SPRINGFIELD, IL
(217) 483-9457
DESIGN FIRM #184001036

**STATE OF ILLINOIS
DEPARTMENT OF TRANSPORTATION**

**EAST ABUTMENT
STRUCTURE NO. 043-0005**
SHEET NO. 24 OF 27 SHEETS

F.A.P. RTE.	SECTION	COUNTY	TOTAL SHEETS	SHEET NO.
301	(43B, 44B, 44HB, 45BID)	JO DAVIESS	309	137
CONTRACT NO. 64C94				
ILLINOIS FED. AID PROJECT				