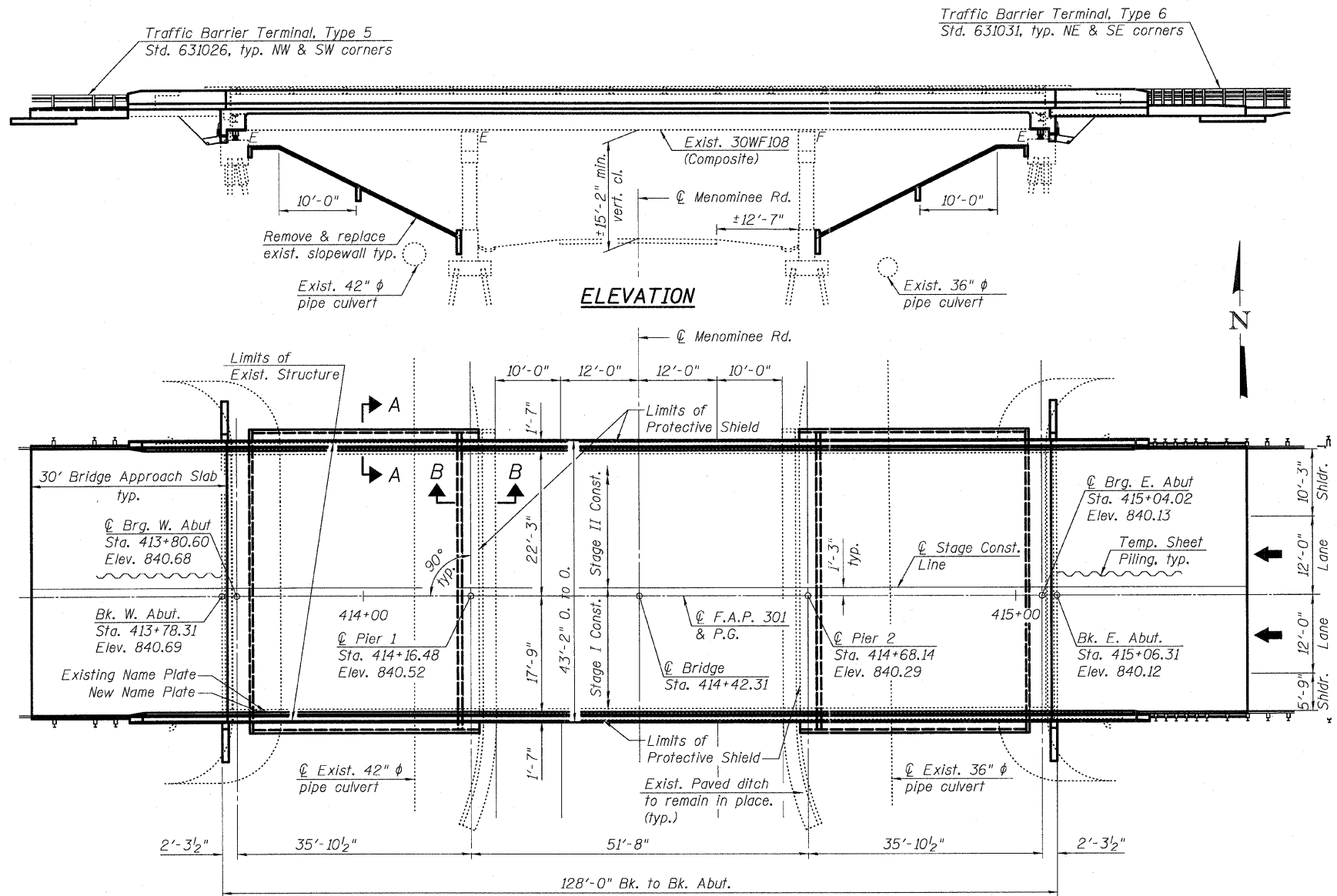


Bench Mark: Chiseled "□" on Concrete Headwall, Sta. 414+09.19, 72.10' Lt. - Elev. 821.86.

Existing Structure: S.N. 043-0006 built in 1968 as F.A. Route 6 (S.B.I. Route. 5), Section 45. The structure consists of a 3 span reinforced concrete deck on continuous steel WF beams supported on reinforced concrete stub abutments and reinforced concrete double hammerhead piers. Bridge deck was repaired in 1970/71 and 1993. Structural steel was cleaned and repainted in 1987. 128'-0" back-to-back abutments and 42'-6" out-to-out deck. Concrete deck to be removed and replaced using Stage Construction.

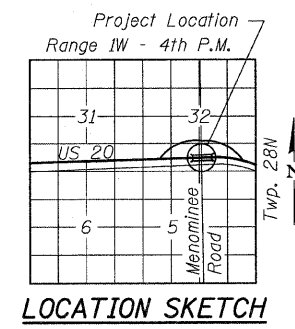
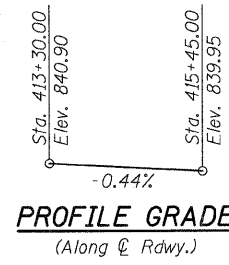
No salvage



ELEVATION

PLAN

- Notes:
1. Install Protective Shield throughout center span.
 2. Remove entire bridge deck.
 3. For Sections A-A and B-B see sheet S02.



LOADING HS20-44
Allow 25#/sq. ft. for future wearing surface.

DESIGN SPECIFICATIONS
2002 AASHTO

DESIGN STRESSES

FIELD UNITS (New Construction)
 $f'_c = 3,500$ psi
 $f_y = 60,000$ psi (reinforcement)
 $f_y = 36,000$ psi (structural steel)

FIELD UNITS (Existing Construction)
 $f'_c = 3,500$ psi
 $f_y = 40,000$ psi (reinforcement)
 $f_y = 36,000$ psi (structural steel)

SEISMIC DATA

Seismic Performance Category (SPC) = A
 Horizontal Bedrock Acceleration Coefficient (A) = 0.030g
 Site Coefficient (S) = 1.5

STATION 414+42.31
 RE-BUILT 2012 BY
 STATE OF ILLINOIS
 F.A.P. RT. 301 SEC. 44-HB
 LOADING HS20-44
 STR. NO. 043-0006

NAME PLATE
See Std. 515001

Existing Name Plate shall be cleaned and relocated next to new Name Plate. Cost included with Name Plates.



APPROVED
FOR STRUCTURAL ADEQUACY ONLY
 Dr. Carl Puzos (PE)
 ENGINEER OF BRIDGES AND STRUCTURES

GENERAL PLAN & ELEVATION
U.S. ROUTE 20 OVER
MENOMINEE ROAD
F.A.P. ROUTE 301 - SEC. 44-HB
JO DAVIESS COUNTY
STATION 414+42.31
STRUCTURE NO. 043-0006

 225 W. OHIO ST., FOURTH FL. CHICAGO, IL 60654 TEL: 312.467.8123 FAX: 312.467.8228 WWW.TERRAENGINEERING.COM	USER NAME = TERRA	DESIGNED - EA	REVISED -	STATE OF ILLINOIS DEPARTMENT OF TRANSPORTATION	GENERAL PLAN AND ELEVATION STRUCTURE NO. 043 - 0006 SHEET NO. S01 OF S21 SHEETS		F.A.P. RTE. 301	SECTION (43B, 44B, 44HB, 45BD)	COUNTY JO DAVIESS	TOTAL SHEETS 309	SHEET NO. 141
	FILE NAME = D430206-001-0P&E.dgn	CHECKED - OY	REVISED -				ILLINOIS FED. AID PROJECT				
	PLOT SCALE =	DRAWN - CM	REVISED -								
	PLOT DATE = 1/31/2012	CHECKED - JB	REVISED -								