

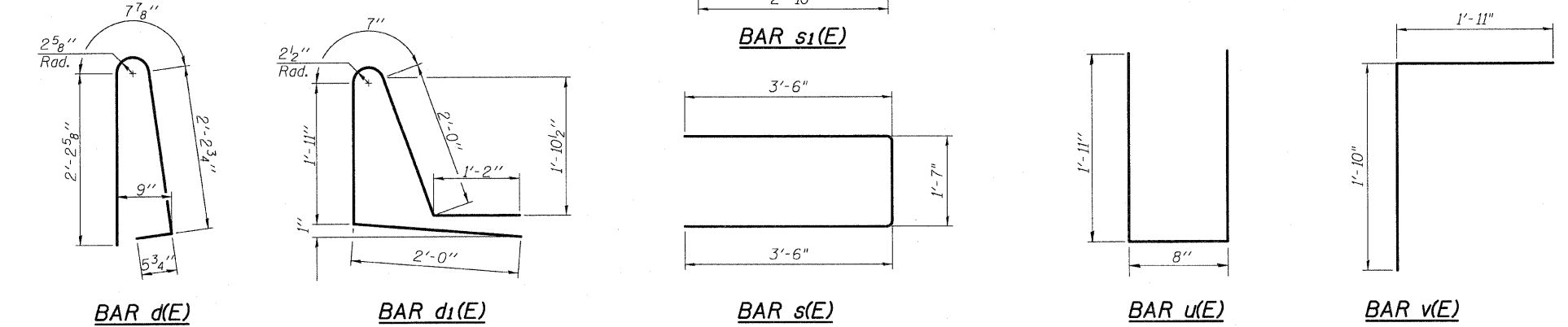
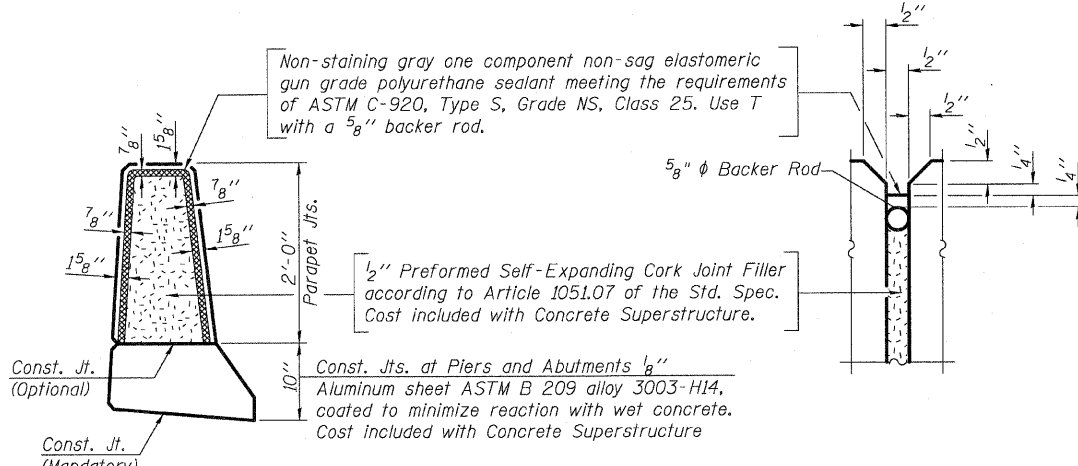
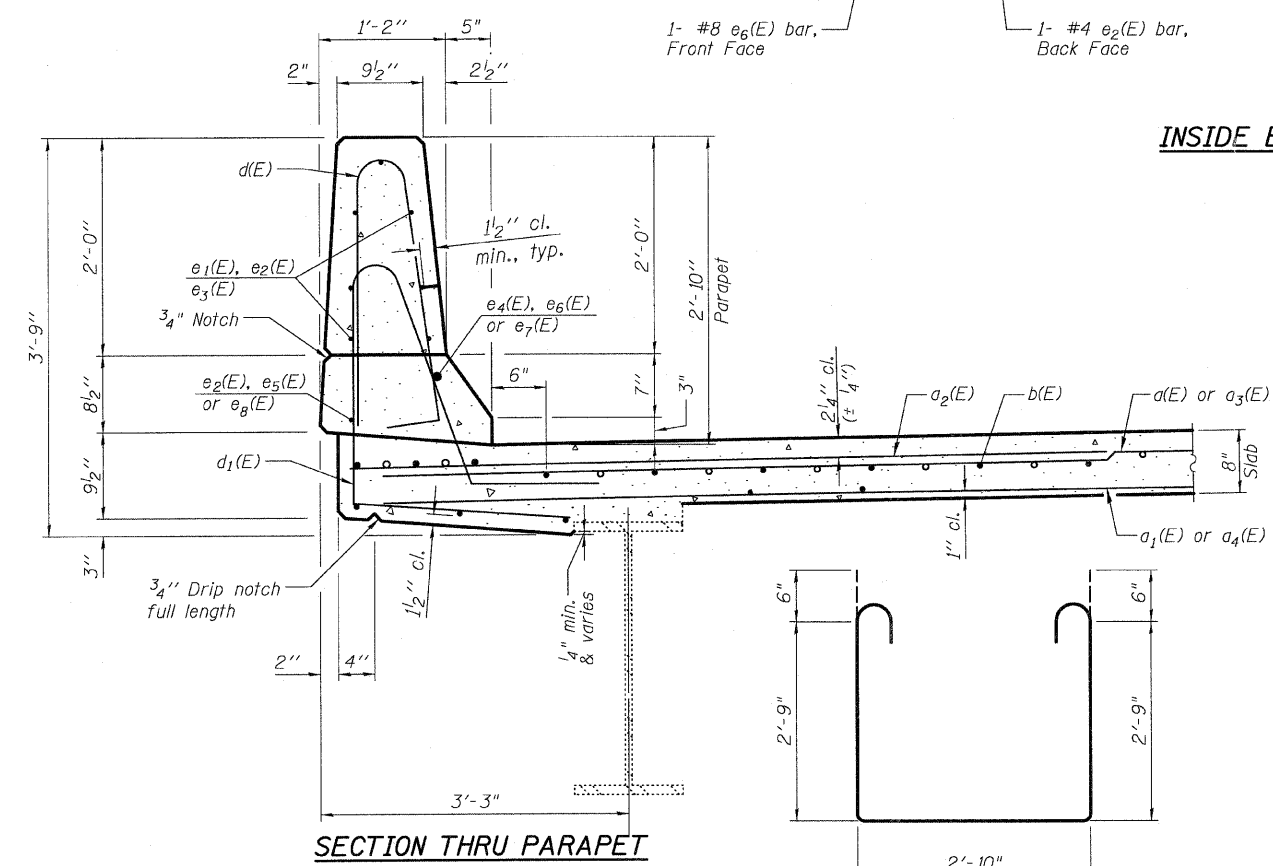
Note:
1. Bars indicated thus 1x3- #8 etc. indicates 1 line of bars with 3 lengths per line.

INSIDE ELEVATION OF NORTH PARAPET
(South Parapet Similar)

MINIMUM BAR LAP
(Parapet)
#4 bar = 2'-0"
#8 bar = 5'-2"

SUPERSTRUCTURE BILL OF MATERIAL

Bar	No.	Size	Length	Shape
d(E)	217	#5	20'-1"	—
a1(E)	169	#5	19'-9"	—
a2(E)	218	#6	6'-6"	—
a3(E)	217	#5	23'-4"	—
a4(E)	169	#5	23'-3"	—
b(E)	230	#5	27'-10"	—
b1(E)	86	#6	27'-5"	—
b2(E)	252	#5	23'-8"	—
d(E)	276	#5	5'-7"	⌋
d1(E)	276	#5	7'-8"	⌋
e1(E)	56	#4	15'-2"	—
e2(E)	64	#4	6'-0"	—
e3(E)	28	#4	19'-2"	—
e4(E)	4	#8	30'-8"	—
e5(E)	4	#4	30'-8"	—
e6(E)	8	#8	6'-0"	—
e7(E)	2	#8	38'-8"	—
e8(E)	4	#4	20'-5"	—
m(E)	16	#6	19'-0"	—
m1(E)	16	#6	23'-6"	—
m2(E)	12	#6	8'-3"	—
m3(E)	12	#6	10'-4"	—
m4(E)	8	#6	2'-11"	—
m5(E)	16	#6	7'-0"	—
m6(E)	4	#6	2'-4"	—
m7(E)	4	#6	4'-6"	—
s(E)	92	#5	8'-7"	—
s1(E)	82	#4	9'-4"	⌋
u(E)	88	#5	4'-6"	—
v(E)	92	#5	3'-9"	—
Reinforcement Bars, Epoxy Coated			Pound	45,380
Concrete Superstructure			Cu. Yd.	196.4



TERRA ENGINEERING LTD.
225 W. OHIO ST., FOURTH FL., CHICAGO, IL 60654
W (312) 487-8123 F (312) 487-8228 WWW.TERRAENGINEERING.COM

USER NAME = TERRA	DESIGNED - EA	REVISED -
FILE NAME = D430206-011-parapet_details.dgn	CHECKED - OY	REVISED -
PLOT SCALE =	DRAWN - CM	REVISED -
PLOT DATE = 1/31/2012	CHECKED - JB	REVISED -

STATE OF ILLINOIS DEPARTMENT OF TRANSPORTATION

PARAPET DETAILS STRUCTURE NO. 043 - 0006
SHEET NO. S11 OF S21 SHEETS

F.A.P. RTE.	SECTION	COUNTY	TOTAL SHEETS	SHEET NO.
301	(43B, 44B, 44HB, 45BD)	JO DAVIESS	309	151
CONTRACT NO. 64C94			ILLINOIS FED. AID PROJECT	