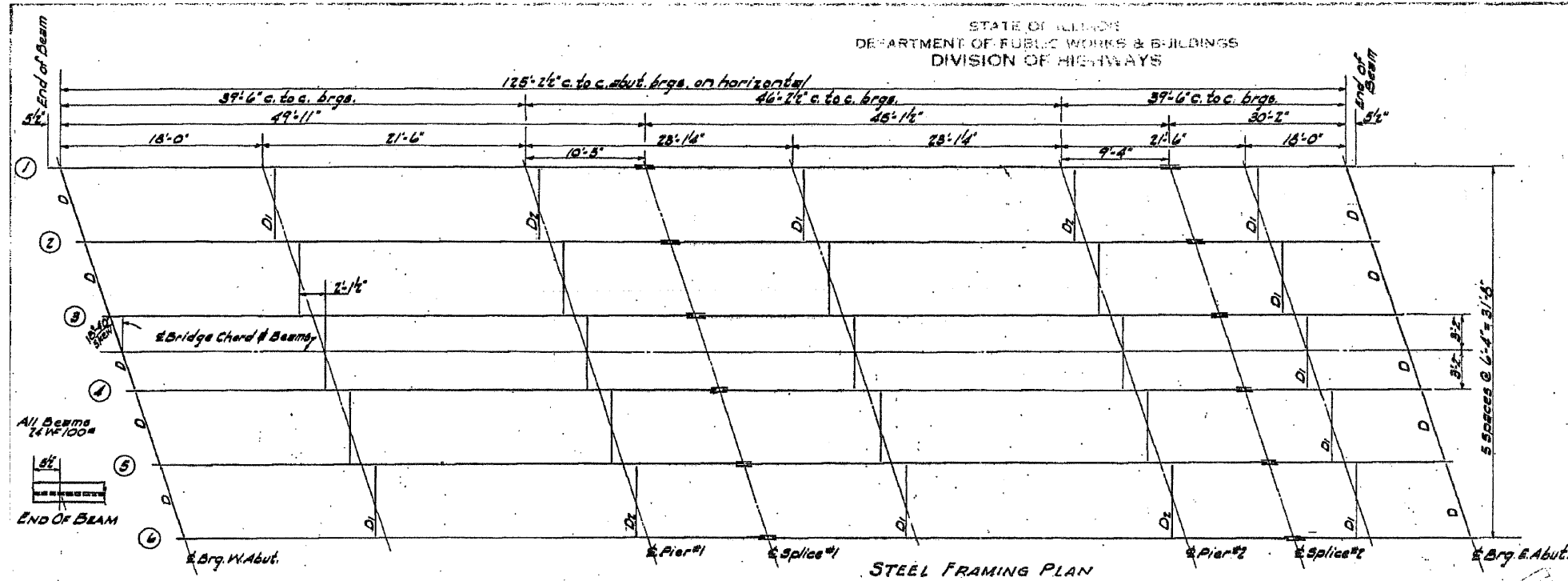


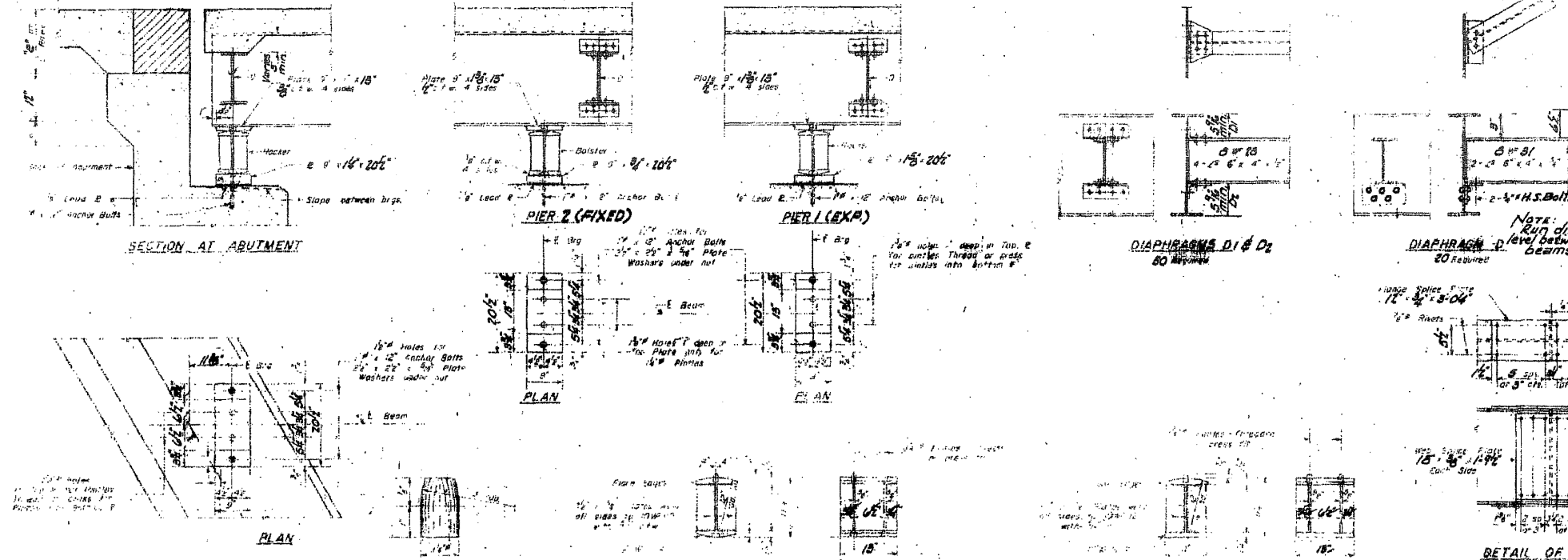
STATE OF ILLINOIS
DEPARTMENT OF PUBLIC WORKS & BUILDINGS
DIVISION OF HIGHWAYS

5 43B J.D. DAVIES 27 8 9



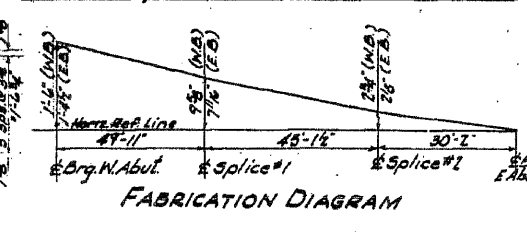
ELEVATION TOP OF SLAB ABOVE BEAMS

LOCATION	B.M. 1	B.M. 2	B.M. 3	B.M. 4	B.M. 5	B.M. 6
W. Abut. @ Brq.	613.30	613.10	614.94	614.70	614.78	614.74
10'-0" E. of Pier #1 Abut.	613.22	613.00	614.76	614.50	614.78	614.74
20'-0" E. of Pier #1 Abut.	613.07	614.84	614.59	614.37	614.09	613.74
30'-0" E. of Pier #1 Abut.	614.94	614.69	614.42	614.14	613.88	613.55
Pier #1	614.82	614.55	614.27	613.95	613.68	613.37
Splice #1	614.69	614.41	614.12	613.81	613.51	613.19
10'-5" E. of Pier #1	614.63	614.36	614.07	613.76	613.55	613.25
20'-5" E. of Pier #1	614.46	614.18	613.84	613.52	613.21	612.90
Pier #2	614.26	613.95	613.64	613.33	613.02	612.71
Splice #2	614.18	613.84	613.58	613.32	612.97	612.61
14'-4" E. of Pier #2	614.04	613.78	613.48	613.17	612.81	612.50
19'-4" E. of Pier #2	613.94	613.68	613.38	613.07	612.72	612.41
E. Abut. @ Brq.	613.85	613.54	613.24	612.94	612.68	612.38
W. Abut. @ Brq.	614.94	614.67	614.39	614.11	613.81	613.55
10'-0" E. of Pier #2 Abut.	614.78	614.46	614.14	613.83	613.51	613.20
20'-0" E. of Pier #2 Abut.	614.68	614.31	613.99	613.68	613.36	613.05
30'-0" E. of Pier #2 Abut.	614.48	614.17	613.85	613.54	613.22	612.91
Pier #1	614.35	614.04	613.72	613.41	613.10	612.79
Splice #1	614.21	613.90	613.59	613.28	612.97	612.66
10'-5" E. of Pier #1	614.09	613.78	613.47	613.16	612.85	612.54
20'-5" E. of Pier #1	613.98	613.67	613.36	613.05	612.74	612.43
Pier #2	613.81	613.50	613.20	612.89	612.59	612.28
Splice #2	613.72	613.41	613.11	612.81	612.50	612.20
14'-4" E. of Pier #2	613.64	613.33	613.03	612.72	612.41	612.10
19'-4" E. of Pier #2	613.54	613.23	612.93	612.62	612.31	612.00
E. Abut. @ Brq.	613.48	613.18	612.88	612.58	612.28	611.98



ELEVATION TOP OF BEAMS

LOCATION	B.M. 1	B.M. 2	B.M. 3	B.M. 4	B.M. 5	B.M. 6
W. Abut. @ Brq.	614.76	614.46	614.16	613.88	613.55	613.25
Pier #1	614.21	613.91	613.61	613.30	613.00	612.70
Splice #1	614.06	613.76	613.46	613.15	612.85	612.55
Pier #2	613.67	613.37	613.07	612.77	612.47	612.17
Splice #2	613.49	613.19	612.89	612.58	612.28	611.98
E. Abut. @ Brq.	613.26	612.96	612.66	612.35	612.05	611.75
W. Abut. @ Brq.	614.27	613.97	613.67	613.37	613.07	612.77
Pier #1	613.67	613.37	613.07	612.77	612.47	612.17
Splice #1	613.54	613.24	612.94	612.64	612.34	612.04
Pier #2	613.17	612.87	612.57	612.27	611.97	611.67
Splice #2	613.08	612.78	612.47	612.17	611.87	611.57
E. Abut. @ Brq.	612.90	612.60	612.30	612.00	611.70	611.40



DESIGNED BY V.A. Santilli
CHECKED BY C.H. Schick
DRAWN BY VRS
PLOT TIME = 10:44:17 AM

FEB 5 1963
REVISIONS
BY K.E. Beermann
BY E. Schick
BY V.A. Santilli

DETAIL OF BEARING AT PIER 1 & ABUTS.
BY V.A. Santilli

WHKS & CO.
ENGINEERING
7018 KINGSMILL CT.
SPRINGFIELD, IL
(217) 483-9457
DESIGN FIRM #184001036

STATE OF ILLINOIS
DEPARTMENT OF TRANSPORTATION

EXISTING PLANS
STRUCTURE NO. 043-0002 & 0003
SHEET NO. 5 OF 10 SHEETS

F.A.P. RTE.	SECTION	COUNTY	TOTAL SHEETS	SHEET NO.
301	143B, 44B, 44NB, 45B1D	JO DAVIESS	309	193

CONTRACT NO. 64C94
ILLINOIS FED. AID PROJECT