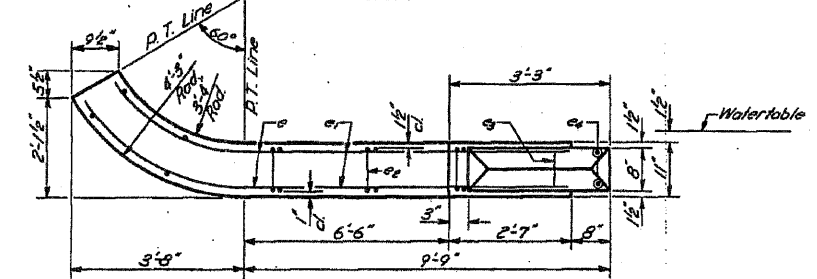
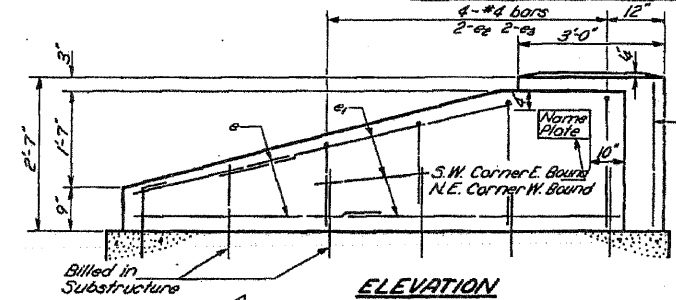
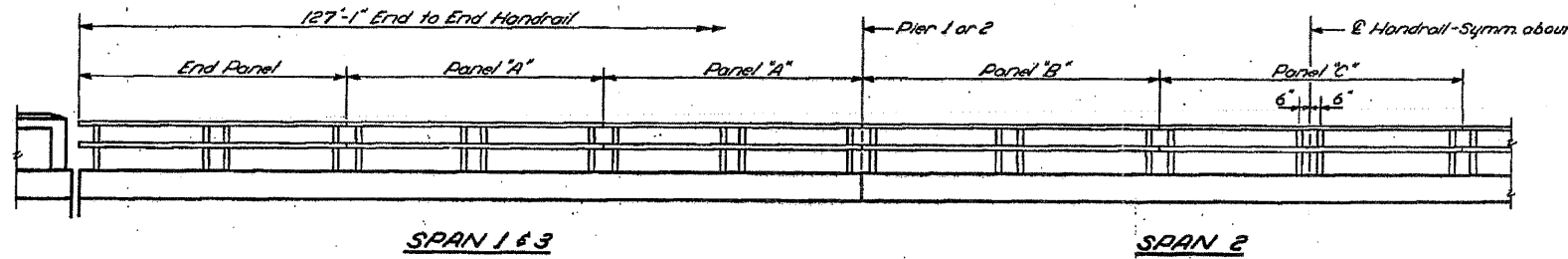


STATE OF ILLINOIS  
DEPARTMENT OF PUBLIC WORKS & BUILDINGS  
DIVISION OF HIGHWAYS

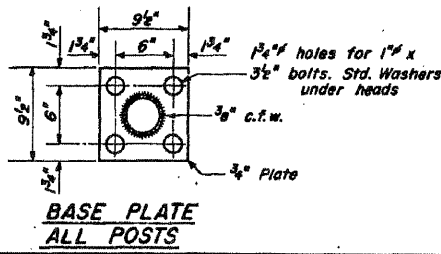
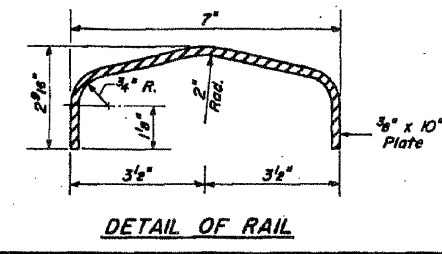
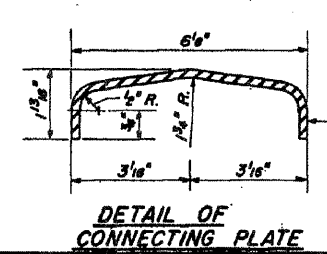
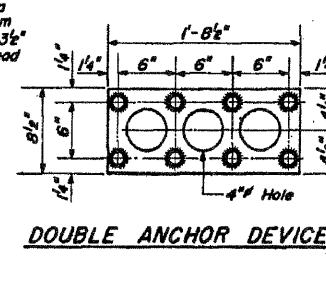
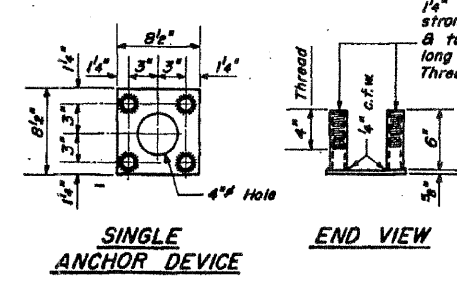
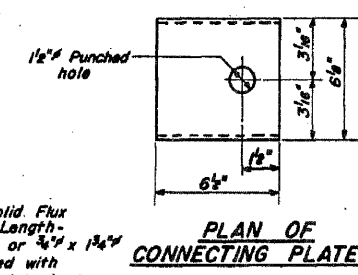
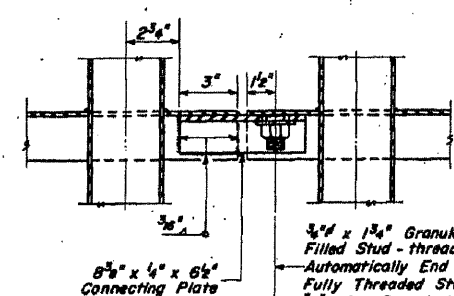
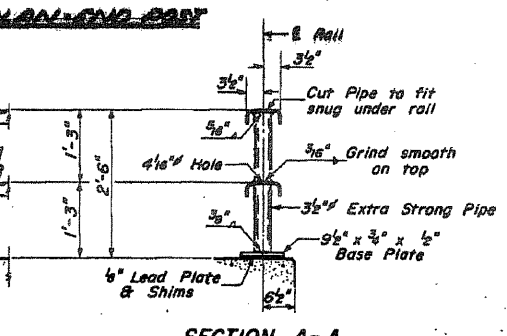
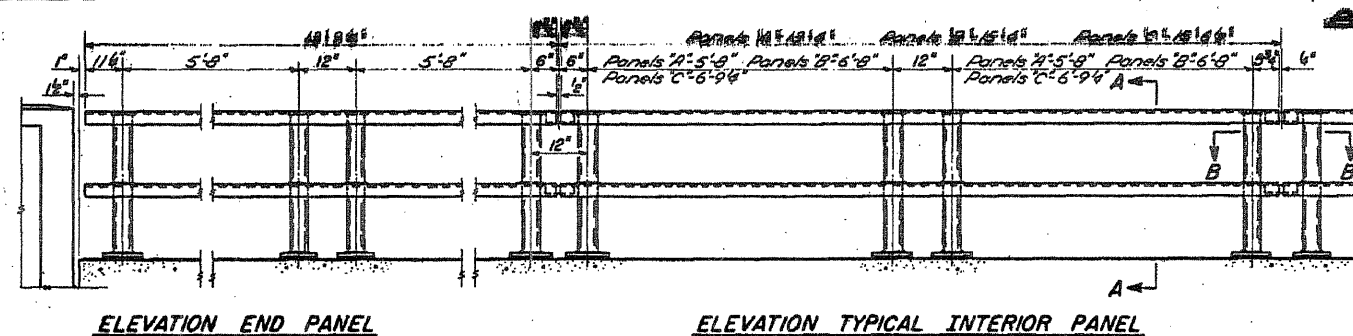
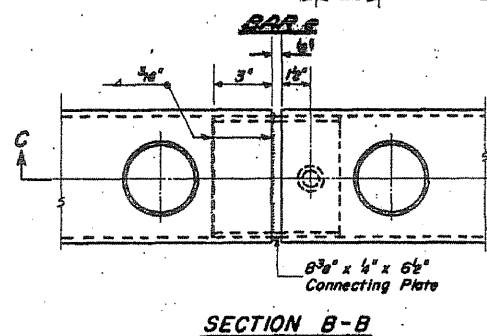
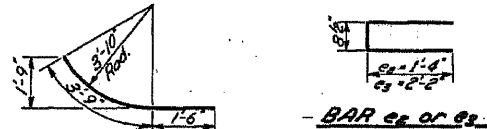
|        |     |            |       |           |
|--------|-----|------------|-------|-----------|
| DATE   | BY  | CHECKED    | SCALE | SHEET NO. |
| 5/2/62 | 43B | Jo Daviess | 27    | 9         |

SHEET NO. 5  
9 SHEETS



BILL OF REINFORCEMENT

| Bar | No. | Size | Length | Shape |
|-----|-----|------|--------|-------|
| e1  | 32  | #4   | 5'-3"  | —     |
| e1  | 48  | #4   | 9'-3"  | —     |
| e2  | 16  | #4   | 3'-4"  | —     |
| e3  | 16  | #4   | 5'-0"  | —     |
| e4  | 16  | #4   | 2'-3"  | —     |



NOTES  
After erection, all Bolts and Washers shall be spot painted with one coat of red lead paint. The entire rail shall then receive two coats of aluminum paint.  
Provide 1-1/2" and 2-1/2" Shims for 50% of the Posts.

TWO STRUCTURES  
BILL OF MATERIAL

| Item               | Unit     | Quantity |
|--------------------|----------|----------|
| Metal Handrail     | Lin. Ft. | 508      |
| Class X Concrete   | Cu. Yds. | 6.5      |
| Reinforcement Bars | Lbs.     | 520      |

HANDRAIL  
S.B.I. RT. 5 - SEC. 43-B  
JO DAVIESS COUNTY  
STA. 214+35 (W.B.)  
STA. 215+00 (E.B.)

|          |         |
|----------|---------|
| DESIGNED | BRD     |
| CHECKED  | CWC/SDS |
| DRAWN    | DLH     |
| CHECKED  | BRD     |

SECTION C-C  
FEB 8 1962  
EXAMINED  
PASSED  
APPROVED

7-12 2-26-62