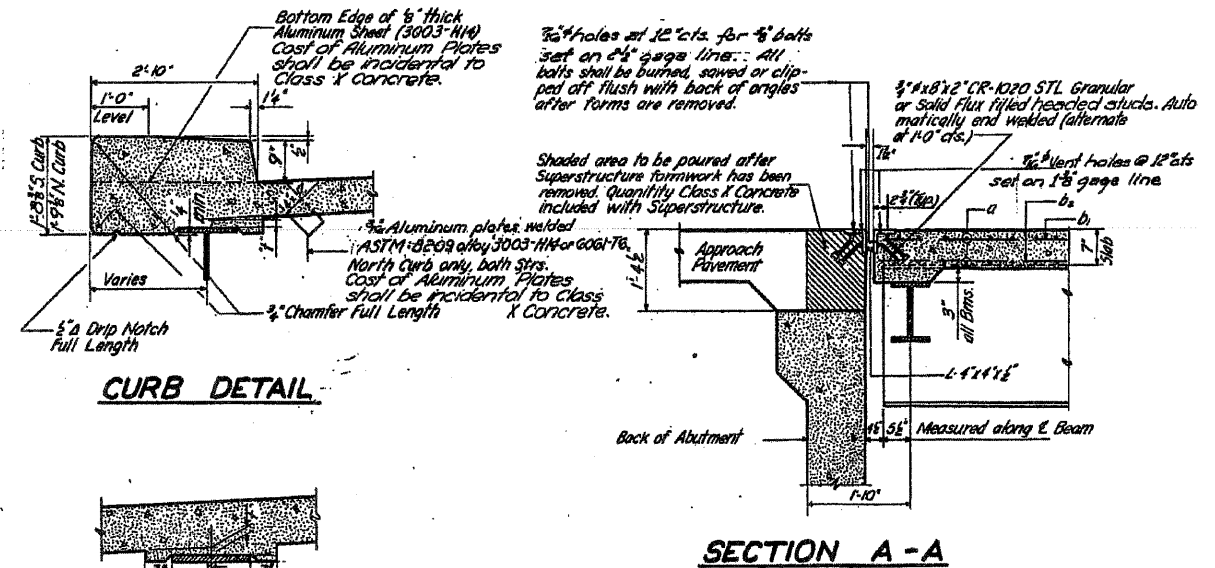


SITE PLAN

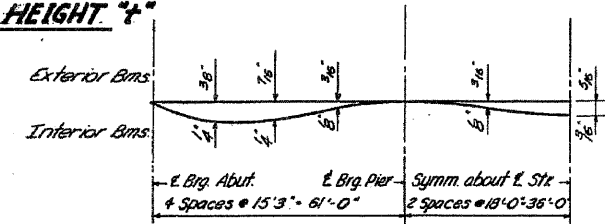


CURB DETAIL

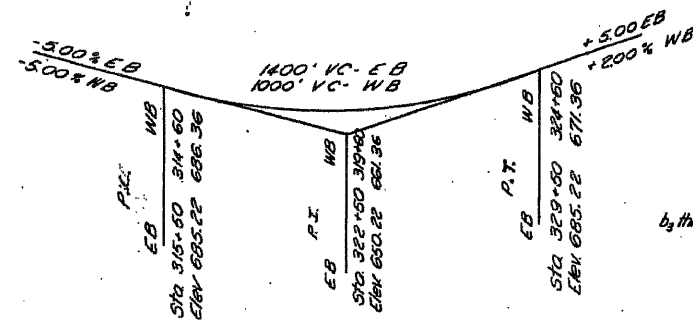
SECTION A-A

METHOD OF DETERMINING FILLET HEIGHT "f"

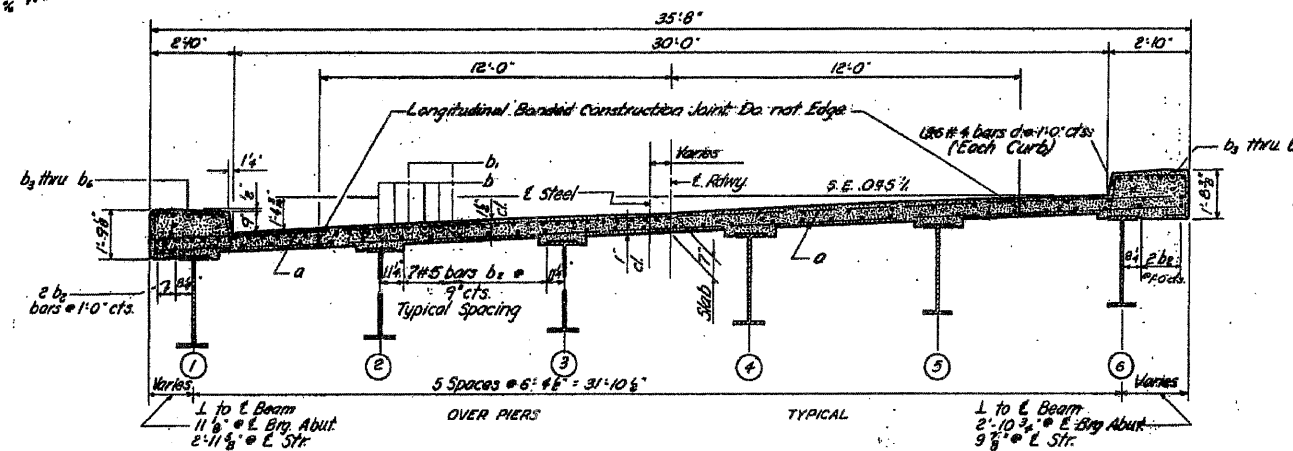
After all Structural Steel has been erected elevations of the top flanges of the beams shall be taken at intervals not to exceed 10 Ft. From these elevations subtract the increment of deflections for these points, determined from the D.L. Deflection Diagram. The elevations so obtained subtracted from the theoretical grade elevations minus floor thickness, equals the fillet heights above top of beam.



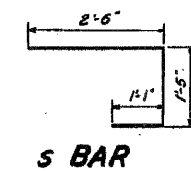
DEAD LOAD DEFLECTION DIAGRAM



V.C. DATA



CROSS SECTION
North and South Structures



S BAR

Note: See Sheet #3 for Slab Reinforcement Layout

SLAB DETAILS AND SITE PLAN
NORTH AND SOUTH STRUCTURES
LITTLE MENOMINEE RIVER
S.B.I. RT. 5 SEC. 44 (B-1)
JO DAVIESS COUNTY
STA. 318 + 30

DESIGNED	Am. R. Loeffl
CHECKED	T. Tanaka
DRAWN	Am. R. Loeffl
CHECKED	T. Tanaka

EXAMINED	DEC. 4 1959
PASSED	[Signature]
APPROVED	[Signature]