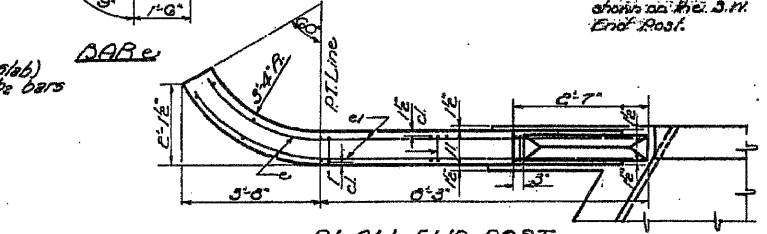
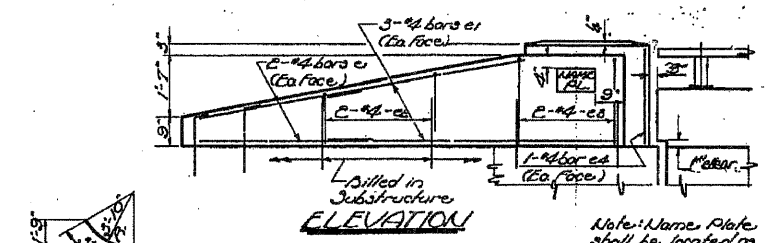
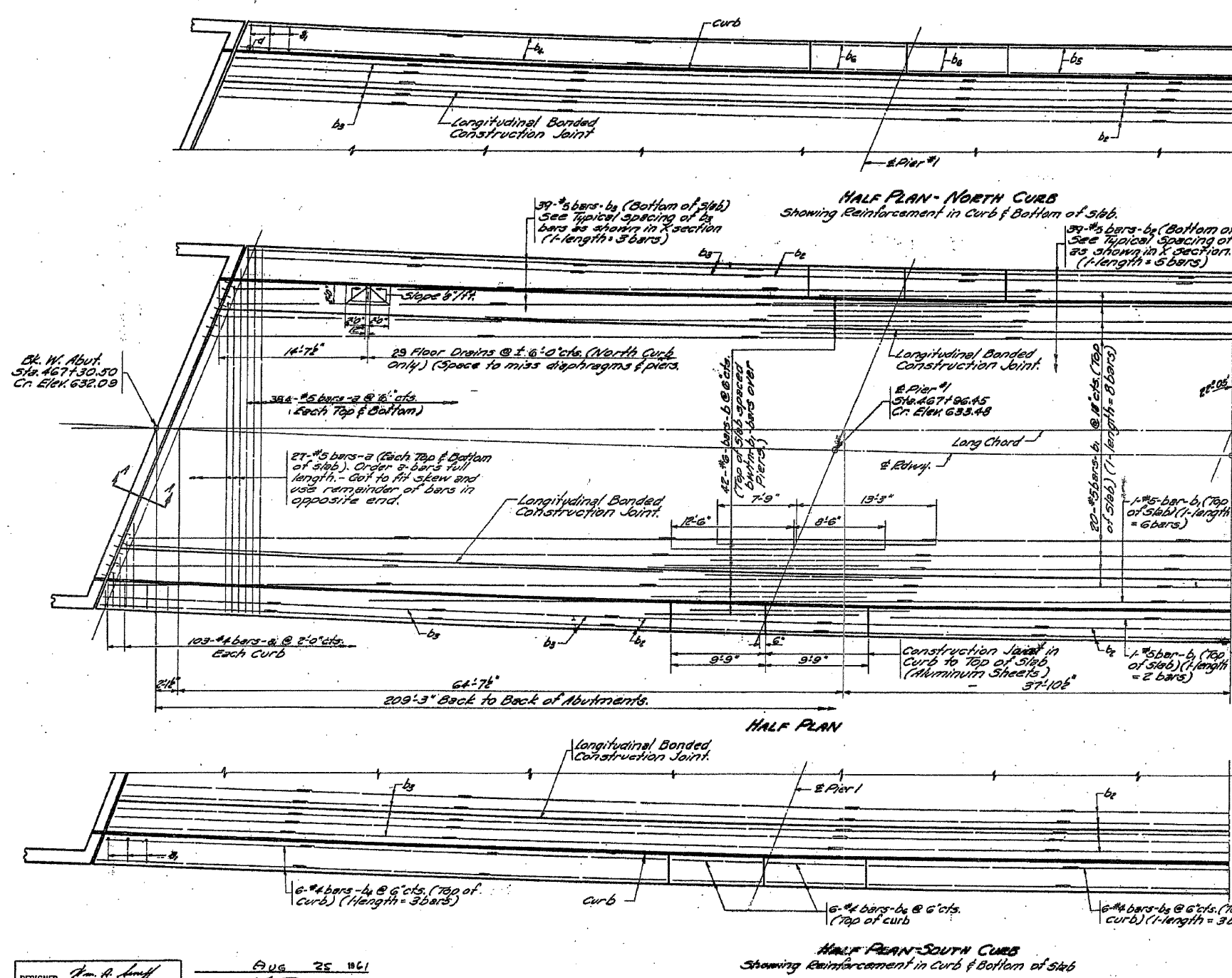


STATE OF ILLINOIS  
DEPARTMENT OF PUBLIC WORKS & BUILDINGS  
DIVISION OF HIGHWAYS

ROUTE NO.	SECTION	COUNTY	POST MILE	SHEET NO.
45A+8	JO DAVIESS	166	23	17 SHEETS

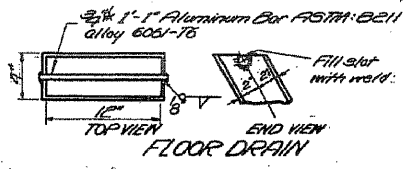


4 END POSTS  
BAR LIST

Bar No.	Size	Length	Shape
e	#6	5'-5"	U
e1	#4	7'-3"	U
e2	#4	3'-4"	U
e3	#4	5'-0"	U
e4	#4	2'-3"	U

BILL OF MATERIAL

Bar No.	Size	Length	Shape
a	#22	#5	35'-3"
b	#206	#4	5'-3"
c	#4	#6	2'-0"
d	#8	#5	27'-0"
e	#195	#5	22'-3"
f	#234	#5	17'-6"
g	#72	#4	19'-9"
h	#36	#4	10'-3"
i	#8	#4	9'-6"
j	#12	#4	1'-3"



NOTES:  
Min. lap shall be 20 diameters noted.  
See sheet No. 2 for Cross section, Curb Detail, Section A-A, Method of Determining Fillet Height, Dead Load Deflection Diagram and clearance between & outside beams and edge of superstructure.  
Band bars in field to miss longitudinal bonded construction joint.

\* Weight of Bolsters, Packers, Bearing Plates, Lead Plates and Anchor Bolts included as Structural Steel. Est. Wt. = 6,940  
\*\* Includes parapet quantities - see sheet 9

DESIGNED: *Tom A. Smith*  
CHECKED: *Coakley*  
DRAWN: *McA. S. Jacobs*  
CHECKED: *Coakley*

EXAMINED: *H.G. Bannerman*  
FACED: *Collins*  
APPROVED: *Ch. B. Williams*

AUG 25 1961

SLAB REINFORCEMENT LAYOUT  
SINKINAWA RIVER  
S.B.I. RT. 5 SEC. 45-B  
JO DAVIESS COUNTY  
STA. 468+35