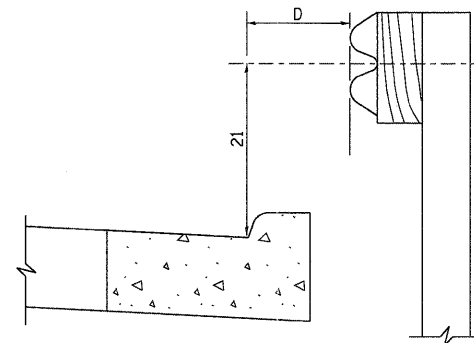
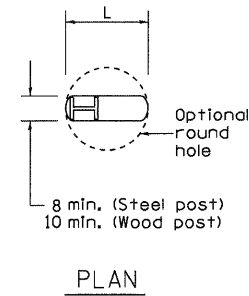


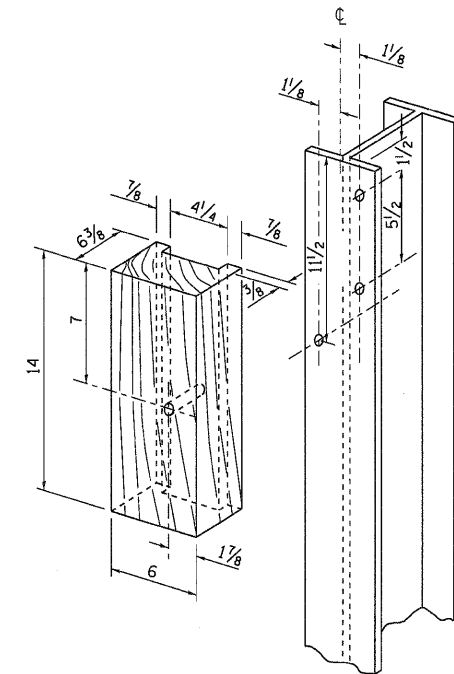
REMOVE AND REERECT STEEL PLATE BEAM GUARDRAIL



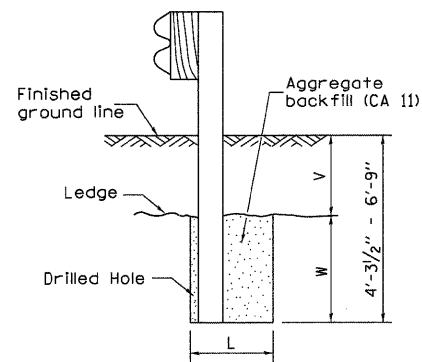
Note:
If it is necessary for D to be more than 12 and less than 10'-0" type M-2 curb and gutter (Std. 606001) shall be used in front of and in advance of the guardrail.

GUARDRAIL PLACED BEHIND CURB

(D = 0 desirable to 12 maximum)



WOOD BLOCK-OUT AND STEEL POST DETAILS

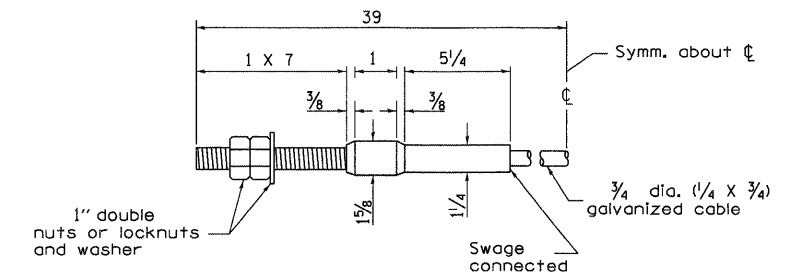


Note:
Ledge line is top of rock ledge or hard slag fill.

ELEVATION

FOOTING FOR POST WHEN IMPERVIOUS MATERIAL IS ENCOUNTERED

V	W	L	
		Steel Post	Wood Post
0 - 18	24	21	23
>18 - 41.5	12	8	10
>41.5 - 53.5	12 - 0	8	10



CABLE ASSEMBLY

(40,000 lbs. min. breaking strength)
Tighten to taut tension.

FILE NAME =	USER NAME = g.jameson	DESIGNED -	REVISED - 10-18-11	STATE OF ILLINOIS DEPARTMENT OF TRANSPORTATION	REGION 2 / DISTRICT 2 STANDARD	F.A.P. RTE. 301	SECTION (43B,44B,44HB,45B)D	COUNTY JO DAVIESS	TOTAL SHEETS 309	SHEET NO. 307	
1:\jobs\tdot.d-2\7307 us 20 ph 11\cadd\cadd sheets\083207dis.2.stds.dgn	DRAWN -	CHECKED -	REVISED -			SCALE:	SHEET NO. 12 OF 14 SHEETS	STA. TO STA.	FED. ROAD DIST. NO. ILLINOIS FED. AID PROJECT	CONTRACT NO. 64C94	
PLOT SCALE = 51.1818 "/ IN.	DATE -	REVISED -									
PLOT DATE = 12/6/2011											