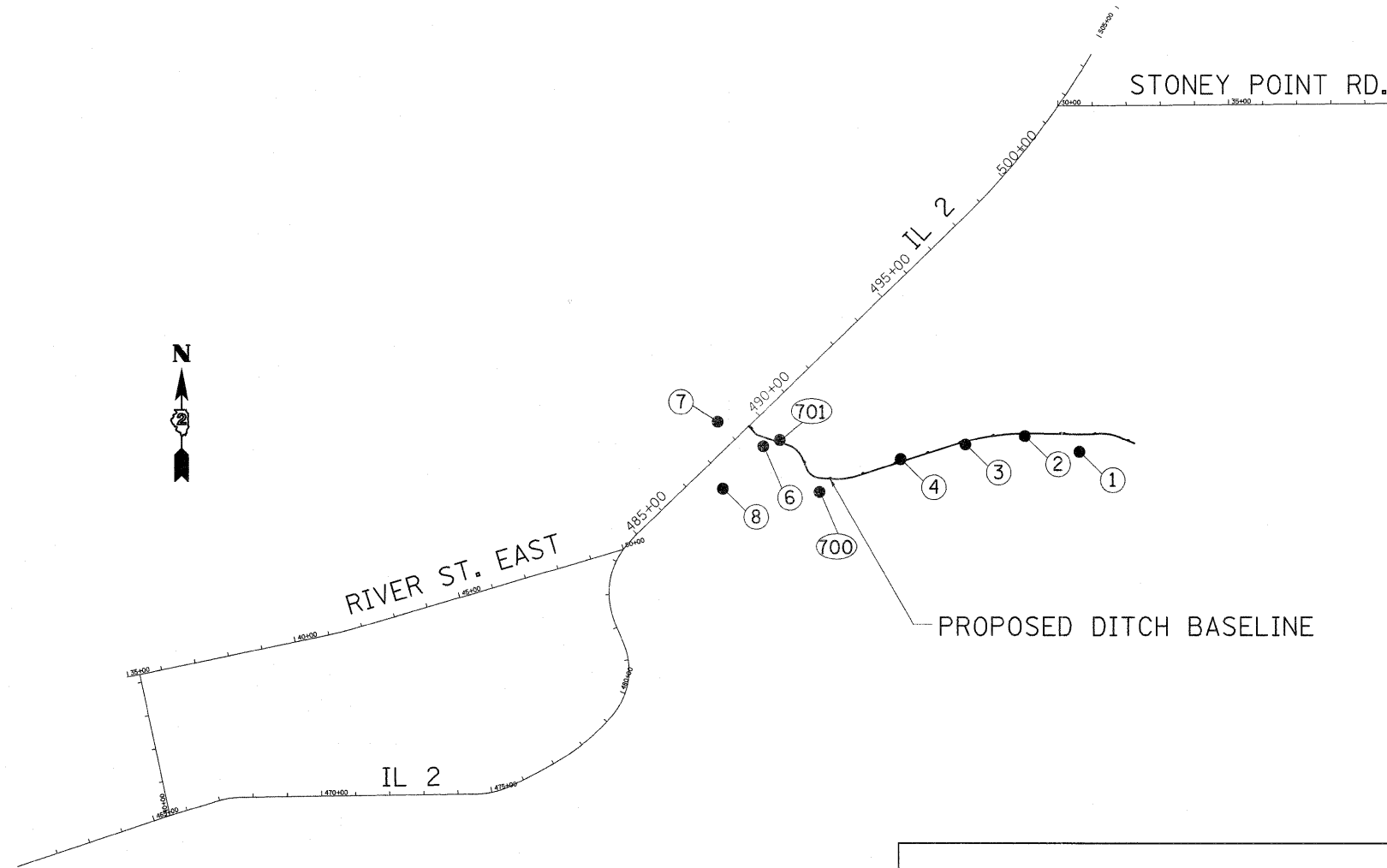


HORIZONTAL & VERTICAL CONTROL



CURVE POINT NUMBERS					
CHAIN	CURVE	PI	CC	PC	PT
FA561-742	250	250	251	252	253
FA561-742	260	260	261	262	263
FA561-742	270	270	271	272	273
FA561-742	280	280	281	282	283
FA561-742	290	290	291	292	293
FA561-742	300	300	301	302	303
FA561-742	310	310	311	312	313
FA561-742	320	320	321	322	323
FA561-742	330	330	331	332	333
FA561-742	340	340	341	342	343
FA561-742	350	350	351	352	353
FA561-742	360	360	361	362	363
FA561-742	370	370	371	372	373
FA561-742	380	380	381	382	383
FA561-742	390	390	391	392	393
FA561-742	1200	1200	1201	1202	1203
FA561-742	1210	1210	1211	1212	1213
FA561-742	1220	1220	1221	1222	1223
FA561-742	1230	1230	1231	1232	1233
FA561-742	1240	1240	1241	1242	1243
FA561-742	1250	1250	1251	1252	1253
FA561-742	1260	1260	1261	1262	1263

APPARENT PROPERTY CORNERS							
POINT	NORTH	EAST	ELEVATION	CHAIN	STATION	OFFSET	DESCRIPTION
700	1887571.0592	2487025.4326	663.0199	FA561-742	489+73.7952	280.9281' RT	PROPERTY CORNER, PROPERTY CORNER
701	1887681.4541	2486967.1953	656.6700	FA561-742	490+08.9444	161.1652' RT	PROPERTY CORNER, PROPERTY CORNER

HORIZONTAL CONTROL POINTS							
POINT	NORTH	EAST	ELEVATION	CHAIN	STATION	OFFSET	DESCRIPTION
1	1887691.5460	2487793.9347	667.1374	PSTREAM	20+60.6774	45.0341' RT	TOPO SURVEY POINT, NAIL
2	1887730.7270	2487627.6141	665.3077	PSTREAM	18+93.4206	8.3427' RT	TOPO SURVEY POINT, TOPO SURVEY POINT
3	1887699.9989	2487459.3367	664.1575	PSTREAM	17+19.2168	16.2498' RT	TOPO SURVEY POINT, TOPO SURVEY POINT
4	1887669.5519	2487269.9768	658.6703	PSTREAM	15+28.6512	11.9658' LT	TOPO SURVEY POINT, TOPO SURVEY POINT
6	1887655.7654	2486938.5336	656.2323	FA561-742	489+70.4864	159.6201' RT	TOPO SURVEY POINT, NAIL
7	1887768.6982	2486756.1420	654.0910	FA561-742	489+18.3508	48.4721' LT	TOPO SURVEY POINT, NAIL
8	1887598.6991	2486741.9328	655.3499	FA561-742	487+90.3457	63.7749' RT	TOPO SURVEY POINT, TOPO SURVEY POINT