

F.A.P. RTE.	SECTION	COUNTY	TOTAL SHEETS	SHEET NO.
742	39M-2	LEE	25	1

INDEX OF SHEETS 03-09-12 LETTING ITEM 016

STATE OF ILLINOIS

DEPARTMENT OF TRANSPORTATION

DIVISION OF HIGHWAYS

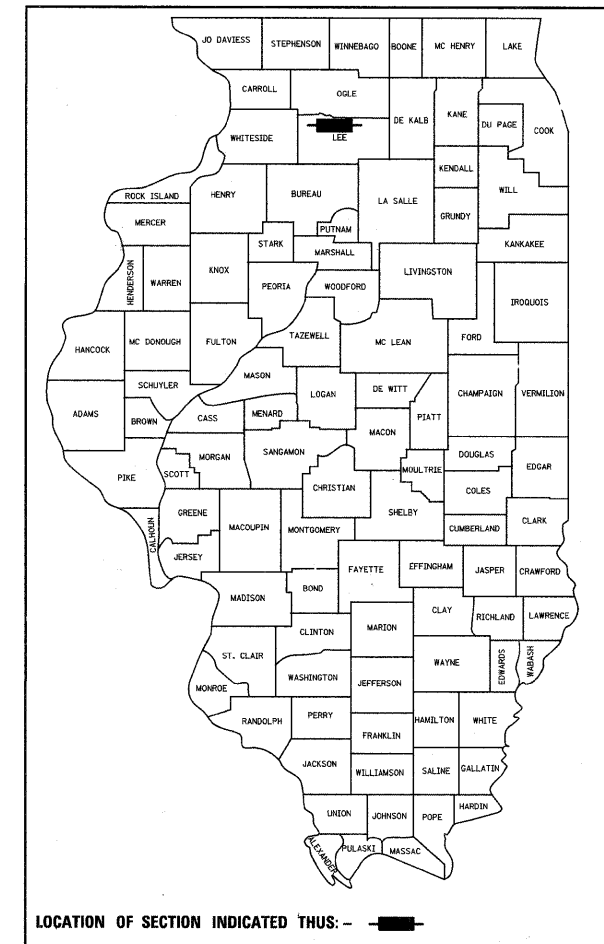
PROPOSED HIGHWAY PLANS

FAP ROUTE 742 (IL 2) SECTION 39M-2

LEE COUNTY

C-92-151-10

D-92-128-07

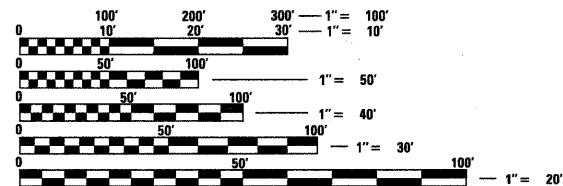
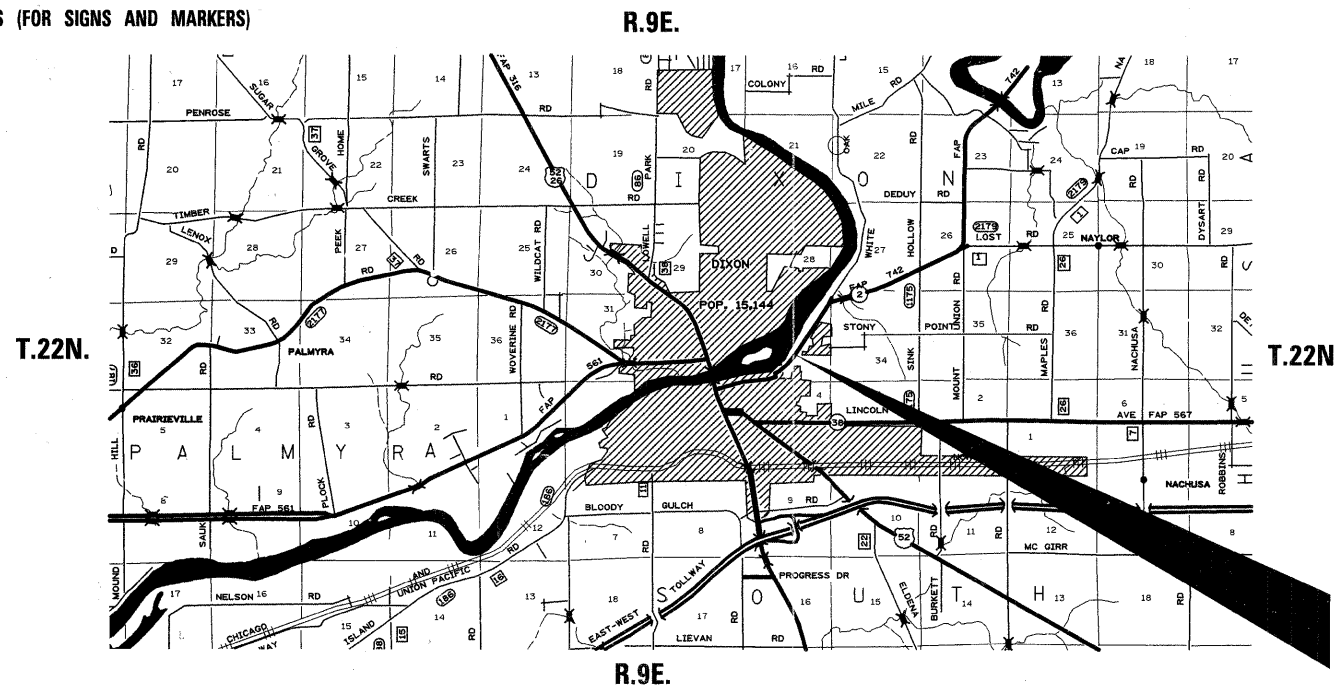


LOCATION OF SECTION INDICATED THUS: - [shaded box] -

- 1 COVER SHEET, INDEX AND STANDARDS
- 2 SUMMARY OF QUANTITIES
- 3 GENERAL NOTES
- 4 - 5 TYPICAL SECTIONS
- 6 SCHEDULE OF QUANTITIES
- 7 EARTHWORK SCHEDULE
- 8 - 11 HORIZONTAL AND VERTICAL CONTROL
- 12 - 13 PLAN AND PROFILE SHEETS
- 14 - 15 EROSION CONTROL SHEETS
- 16 LANE CLOSURE DETAIL
STAY IN YOUR LANE SIGN DETAILS (40.2)
- 17 WITNESS MARKER & PERMANENT SURVEY MARKERS, TYPE II (66.2)
- 18 DETAILS OF PLANTING AND BRACING TREES (92.1)
- 19 - 25 CROSS-SECTIONS

STANDARDS

- 000001-06 STANDARD SYMBOLS, ABBREVIATIONS AND PATTERNS
- 001006 DECIMAL OF AN INCH AND OF A FOOT
- 280001-06 TEMPORARY EROSION CONTROL SYSTEMS
- 667001-01 DRAINAGE MARKERS
- 701001-02 OFF-ROAD OPERATIONS, 2L, 2W, MORE THAN 4.5 M (15') AWAY
- 701006-03 OFF-ROAD OPERATIONS, 2L, 2W, 4.5 M (15') TO 600 MM (24") FROM PAVEMENT EDGE
- 701606-08 URBAN LANE CLOSURE, MULTILANE, 2W WITH MOUNTABLE MEDIAN
- 701901-02 TRAFFIC CONTROL DEVICES
- 720011-01 METAL POSTS FOR SIGNS, MARKERS AND DELINEATORS
- 728001-01 TELESCOPING STEEL SIGN SUPPORT
- 729001-01 APPLICATIONS OF TYPES A AND B METAL POSTS (FOR SIGNS AND MARKERS)



FULL SIZE PLANS HAVE BEEN PREPARED USING STANDARD ENGINEERING SCALES. REDUCED SIZED PLANS WILL NOT CONFORM TO STANDARD SCALES. IN MAKING MEASUREMENTS ON REDUCED PLANS, THE ABOVE SCALES MAY BE USED.

J.U.L.I.E.
JOINT UTILITY LOCATION INFORMATION FOR EXCAVATION
1-800-892-0123

DIXON TOWNSHIP, SECTION 33

GROSS LENGTH OF PROJECT = 1,088 LIN. FT. = 0.20 MILES
NET LENGTH OF PROJECT = 1,088 LIN. FT. = 0.20 MILES

IMPROVEMENT / SECTION BEGINS
STA. 10 + 32.00

RE-ESTABLISHMENT OF A DRAINAGE DITCH ALONG IL 2 ON THE EAST SIDE OF DIXON

IMPROVEMENT / SECTION ENDS
STA. 21 + 20.00

STATE OF ILLINOIS
DEPARTMENT OF TRANSPORTATION
DIVISION OF HIGHWAYS

SUBMITTED December 8, 2011
Eric S. [Signature]
DEPUTY DIRECTOR OF HIGHWAYS, REGION ENGINEER

February 3, 2012
John B. [Signature]
ENGINEER OF DESIGN AND ENVIRONMENT

February 3, 2012
William R. [Signature]
DIRECTOR OF HIGHWAYS, CHIEF ENGINEER

PRINTED BY THE AUTHORITY OF THE STATE OF ILLINOIS

PROJECT ENGINEER: REBECCA MARRUFFO

SENIOR SQUAD LEADER: KEVIN HENSON (815)-284-5971

				ROADWAY 0044
CODE NUMBER	ITEM	UNIT	TOTAL QUANTITY	% STATE
20100110	TREE REMOVAL (6 TO 15 UNITS DIAMETER)	UNIT	423	423
20100210	TREE REMOVAL (OVER 15 UNITS DIAMETER)	UNIT	124	124
20101100	TREE TRUNK PROTECTION	EACH	8	8
20200100	EARTH EXCAVATION	CU YD	1682	1682
* 25000310	SEEDING, CLASS 4	ACRE	1	1
* 25100630	EROSION CONTROL BLANKET	SQ YD	1706	1706
25100900	TURF REINFORCEMENT MAT	SQ YD	2224	2224
28000250	TEMPORARY EROSION CONTROL SEEDING	POUND	100	100
28000305	TEMPORARY DITCH CHECKS	FOOT	366	366
28000400	PERIMETER EROSION BARRIER	FOOT	100	100
28000500	INLET AND PIPE PROTECTION	EACH	1	1
60100905	PIPE DRAINS 4"	FOOT	6	6
66700305	PERMANENT SURVEY MARKERS, TYPE II	EACH	1	1
66700705	FURNISHING AND ERECTING DRAINAGE MARKERS	EACH	31	31
67100100	MOBILIZATION	L SUM	1	1
70102625	TRAFFIC CONTROL AND PROTECTION, STANDARD 701606	L SUM	1	1
* A2006514	TREE, QUERCUS BICOLOR (SWAMP WHITE OAK), 1-3/4" CALIPER, BALLED AND BURLAPPED	EACH	34	34
* C2001748	SHRUB, CORNUS SERICEA CARDINAL (CARDINAL REDOSIER DOGWOOD), 4' HEIGHT, BALLED AND BURLAPPED	EACH	40	40
Z0013798	CONSTRUCTION LAYOUT	L SUM	1	1
Z0025500	FURNISHING AND INSTALLING PROPERTY MARKERS	EACH	3	3

* SPECIALTY ITEM

GENERAL NOTES

See cross sections for special ditches and backslopes.

The final top 100 mm (four inches) of soil in any right-of-way area disturbed by the Contractor must be capable of supporting vegetation. The soil must be from the A horizon (zero to 2' deep) of soil profiles of local soils.

All Borrow/Waste/Use sites must be approved by the Department prior to removing any material from the project or initiating any earthmoving activities, including temporary stockpiling outside the limits of construction.

The Contractor shall seed all disturbed areas within the project limits. Seeding Class 4 or 2A shall be used, except in front of properties where the grass will be mowed, then use Seeding, Class 1. Class 2A shall be used on front slopes and ditch bottoms. Class 4 shall be used behind Type A gutter, on all backslopes and areas behind the backslope, and beyond the toe of front slope on fill sections without ditches.

Fertilizer Nutrients shall be applied at the rate specified in Sections 250 and 252 of the Standard Specifications. This shall be included in the cost of the SEEDING or SODDING.

Tree planting layout shall be performed by the District Landscape Architect. Mulch shall be placed 4" thick and to the diameter around the tree as shown on District Standard 92.1. The mulch shall be hardwood wood chips placed on weed barrier fabric. This work shall be included in the cost of the tree.

PERMANENT SURVEY MARKERS, TYPE II, shall be set at intervals of 1 mile or as directed by the Engineer. Bridge or culvert projects shall have one survey marker placed near the structure. Estimated: 1 Each.

Permanent Survey Markers, Type II shall be cast-in-place as shown on District Standard 66.2. Option 2 would be to install a vaulted style, monumented as described by NGS as a 3D monument (Top Security Sleeve Rod Monument), with installation instructions provided by the District Chief of Surveys. If poured in place, the bottom of the marker shall be 5'-0" below the ground surface.

The Contractor shall submit to the Engineer a description of location, elevation, and coordinates for each permanent survey marker. The horizontal coordinates must be derived by GPS and the elevation derived using an electronic level. The meta data, such as the Geoid used, (NGS adjustment i.e.: 97 HARN, 03, 07), and the base point(s) name or number shall be submitted along with a complete collection log. If collected using RTK method, it will require either 3 collections (averaged) from 2 different bases, or a minimum of 3 collections (averaged), at least 2 hours apart, from the same base. If using a CORS type network, the collection procedure shall include localizing with check shots on at least 2 different HARN monuments both before and after collection. The level circuit shall be run from furnished mark to furnished mark and then adjusted. The error of closure shall be submitted with the electronic level notes in a recognized format approved by the Engineer and/or the Chief of Surveys. The Engineer shall submit this information to the District Chief of Surveys.

The Contractor shall be responsible for collecting and maintaining an electronic log of all stakeout survey that is performed on the job, either by him/her or any sub-contractor performing the stakeout. Upon request, all logs shall be submitted to the Department. No additional compensation will be allowed for this work, but shall be considered included in the cost for CONSTRUCTION LAYOUT.

The Permanent Survey Markers, if possible, shall be installed at the beginning of the job and protected throughout.

The Contractor shall be responsible for protecting utility property during construction operations as outlined in Article 107.31 of the Standard Specifications. A minimum of 48 hours advance notice is required for non-emergency work. The JULIE number is 800-892-0123. The following listed utilities located within the project limits or immediately adjacent to the project construction limits are members of JULIE:

CenturyTel	Ms. Cindy Olson	(309) 345-5240
Commonwealth Edison Company	Mr. Michael Lenox	(815) 490-2869
Nicor gas Co.	Ms. Constance Lane	(630) 983-8676
Comcast Cable	Mr. Michael Owens	(815) 395-8977
Dixon Water Dept.	Mr. Shawn Ortgiesen	(815) 288-3381

CADD data will be available to Contractors and Consultants working on this project. This information will be provided upon request as MicroStation CADD files and Geopak coordinate geometry files ONLY. If data is required in other formats it will be your responsibility to make these conversions. If any discrepancy or inconsistency arises between the electronic data and the information on the hard copy, the information on the hard copy should be used. Contact the District's Project Engineer to request these files.

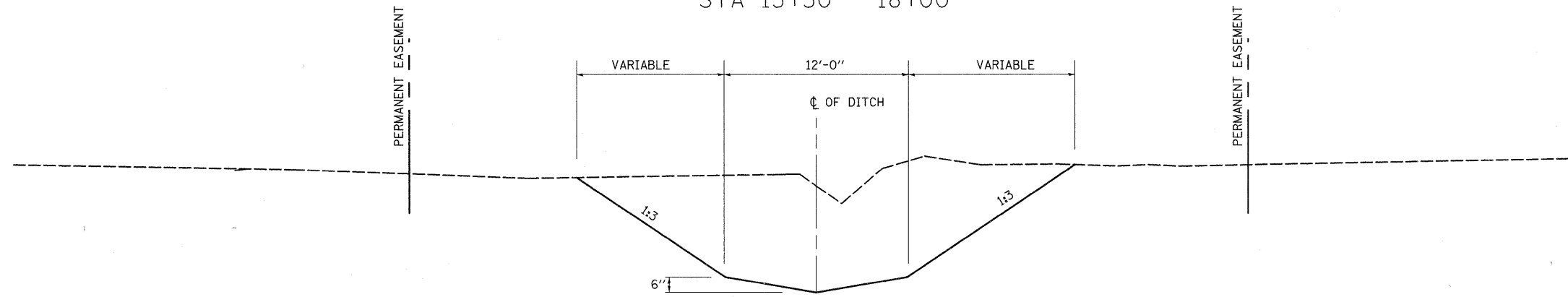
Commitments:

1. A commitment has been made to Richard Rockwood to save some tree's on his property. See plan and profile sheets or memo for further information.
2. A commitment has been made to Richard Rockwood that the contractor will not be allowed to park construction equipment on his easement due to the presence of sewer lines.

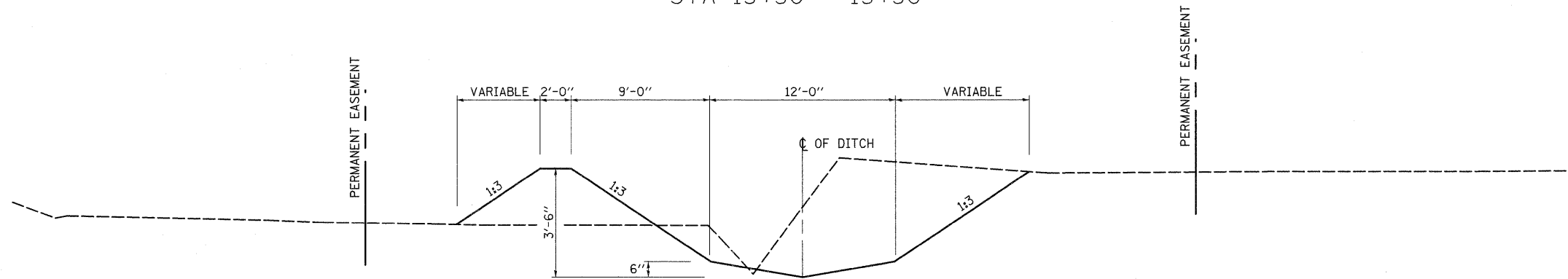
FILE NAME = 64D77.GN.DOCX	USER NAME =	DESIGNED - Engineering Systems	REVISED -	STATE OF ILLINOIS DEPARTMENT OF TRANSPORTATION	GENERAL NOTES	ROUTE	SECTION	COUNTY	TOTAL SHEETS	SHEET NO.
		DRAWN -	REVISED -			FAP 742	39M-2	Lee	25	3
	PLOT SCALE =	CHECKED -	REVISED -			(IL 2)	CONTRACT NO. 64077			
	PLOT DATE = 12/6/2011 11:33 AM	DATE - 10/28/2010 2:17 PM	REVISED -			SCALE:	SHEET NO.	OF	SHEETS	STA.

TYPICAL SECTIONS

STA 10+32 - 13+50
STA 15+50 - 18+00



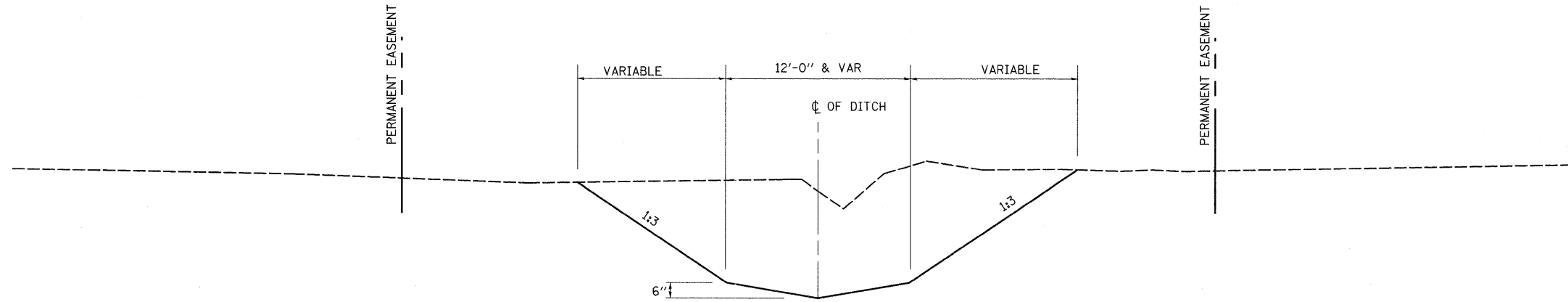
STA 13+50 - 15+50



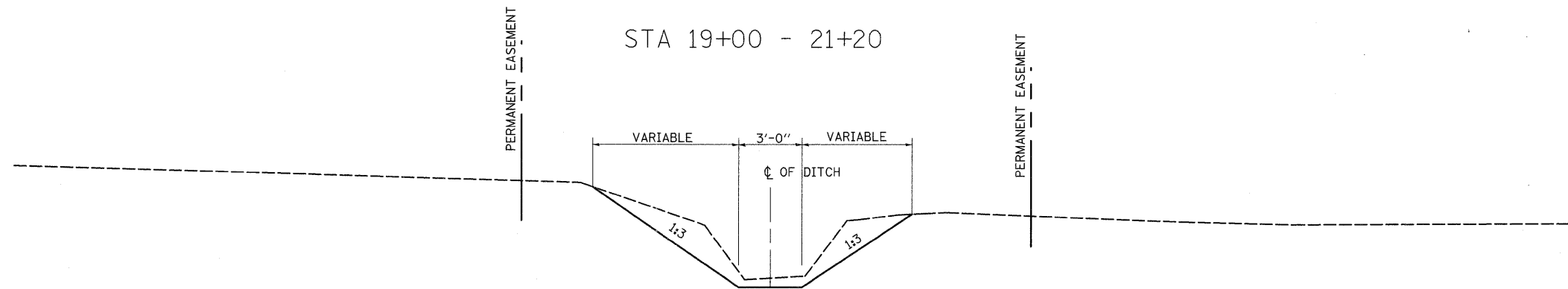
FILE NAME =	USER NAME = ankneyde	DESIGNED -	REVISED -	STATE OF ILLINOIS DEPARTMENT OF TRANSPORTATION	TYPICAL SECTIONS				F.A.P. RTE.	SECTION	COUNTY	TOTAL SHEETS	SHEET NO.
ca\pw_work\pwidot\ankneyde\d0130575\0212007-shr-typical.dgn		DRAWN -	REVISED -						742	39M-2	LEE	25	4
PLOT SCALE = 18.0000' / 1in.		CHECKED -	REVISED -		CONTRACT NO. 64D77								
PLOT DATE = Wed Dec 07 13:36:59 2011		DATE -	REVISED -		SCALE:	SHEET NO.	OF	SHEETS	STA.	TO STA.	FED. ROAD DIST. NO.	ILLINOIS	FED. AID PROJECT

TYPICAL SECTIONS

STA 18+00 - 19+00



STA 19+00 - 21+20



FILE NAME =	USER NAME = ankneyde	DESIGNED -	REVISED -	STATE OF ILLINOIS DEPARTMENT OF TRANSPORTATION	TYPICAL SECTIONS				F.A.P. RTE.	SECTION	COUNTY	TOTAL SHEETS	SHEET NO.
c:\pw_work\pwidot\ankneyde\d0130575\0212007-shr-typical.dgn		DRAWN -	REVISED -		742	39M-2	LEE	25	5				
PLOT SCALE = 10.0000' / in.		CHECKED -	REVISED -		SCALE: SHEET NO. OF SHEETS STA. TO STA.				CONTRACT NO. 64D77				
PLOT DATE = Wed Dec 07 13:36:59 2011		DATE -	REVISED -		FED. ROAD DIST. NO. ILLINOIS FED. AID PROJECT								

20100110 TREE REMOVAL (6 TO 15 UNITS DIAMETER)

UNIT	LOCATION	OFFSET
6	10 + 80	15.8' Rt
6	11 + 13	2.1' Rt
6	11 + 23	1.3' Lt
6	11 + 25	3.1' Lt
6	11 + 28	2.3' Rt
14	11 + 34	3.6' Lt
6	11 + 77	14.2' Rt
6	11 + 86	13.7' Rt
6	12 + 2	22.6' Rt
6	12 + 55	16.0' Rt
6	12 + 55	14.8' Rt
12	12 + 63	3.6' Rt
6	12 + 76	3.3' Rt
12	12 + 78	11.5' Rt
8	12 + 83	18.6' Rt
12	13 + 6	21.0' Rt
8	13 + 19	15.8' Rt
6	13 + 20	15.7' Rt
6	13 + 78	7.2' Rt
12	13 + 84	11.2' Rt
14	13 + 98	16.3' Rt
6	14 + 25	26.5' Lt
10	14 + 51	16.9' Lt
6	14 + 80	17.4' Lt
6	14 + 86	9.8' Lt
10	14 + 93	1.7' Rt
6	15 + 0	1.4' Lt
10	15 + 12	15.4' Lt
8	15 + 12	16.7' Lt
6	15 + 21	1.8' Rt
8	15 + 24	3.8' Rt
10	15 + 63	4.9' Rt
8	15 + 79	5.2' Rt
8	15 + 83	5.1' Rt
6	15 + 87	12.3' Rt
10	15 + 89	20.8' Rt
6	16 + 0	4.1' Lt
6	16 + 11	11.9' Lt
6	17 + 55	19.1' Lt
7	17 + 67	2.4' Lt
6	17 + 87	5.7' Lt
6	17 + 87	8.9' Lt
8	18 + 21	8.5' Lt
6	18 + 32	2.6' Lt
6	18 + 48	22.0' Lt
8	18 + 49	21.1' Lt
8	18 + 55	1.2' Rt
6	18 + 55	0.5' Rt
6	18 + 62	6.9' Lt
8	18 + 67	17.4' Lt
6	18 + 69	15.7' Lt
6	18 + 71	16.3' Lt
8	18 + 72	19.9' Lt
8	19 + 46	14.7' Lt
14	19 + 51	0.4' Rt
423	TOTAL	

20100210 TREE REMOVAL (OVER 15 UNITS DIAMETER)

UNIT	LOCATION	OFFSET
16	12 + 63	17.3' Rt
20	12 + 86	0.4' Rt
20	13 + 9	8.1' Rt
22	13 + 58	6.1' Rt
30	13 + 62	12.3' Rt
16	14 + 20	21.2' Rt
124	TOTAL	

20101100 TREE TRUNK PROTECTION

EACH	LOCATION	OFFSET
1	19 + 14	8.75' Rt
1	19 + 28	9' Rt
1	19 + 40	8' Rt
1	20 + 15	12.1' Rt
1	20 + 35	12.3' Rt
1	20 + 56	13' Rt
1	20 75	14.7' Rt
1	20 92	15.9' Rt
8	TOTAL	

25100630 EROSION CONTROL BLANKET

SQ YD	LOCATION
1359	LT. STA. 10+ 40 TO 16 + 0
347	LT. STA. 16 + 0 TO 2+ 0
1706	TOTAL

25100900 TURF REINFORCEMENT MAT

SQ YD	LOCATION
1278	LT. STA. 10 + 40 TO 16+ 0
946	LT. STA. 16 + 0 TO 2+ 0
2224	TOTAL

28000305 TEMPORARY DITCH CHECKS

FOOT	LOCATION
20	11 + 0
20	11 + 50
20	12 + 0
20	12 + 50
20	13 + 0
20	13 + 50
20	14 + 0
20	14 + 50
20	15 + 0
20	15 + 50
20	16 + 0
20	16 + 50
20	17 + 0
20	17 + 50
20	18 + 0
16	18 + 50
10	19 + 0
10	19 + 50
10	20 + 0
10	20 + 50
10	21 + 0
366	TOTAL

28000400 PERIMETER EROSION BARRIER

FOOT	LOCATION
100	To be used at the RE's discretion
100	TOTAL

28000500 INLET AND PIPE PROTECTION

EACH	LOCATION
1	10 + 40
1	TOTAL

60100905 PIPE DRAINS 4"

FOOT	LOCATION	REMARKS
6	LT/RT 20 + 75	Drain pipe coming out of Sauk Valley Machine building
6	TOTAL	

66700305 PERMANENT SURVEY MARKERS, TYPE II

EACH	LOCATION
1	Location to be determined by the RE
1	TOTAL

66700705 FURNISHING AND ERECTING DRAINAGE MARKERS

EACH	LOCATION	OFFSET	REMARKS
1	10 + 39	30' Rt	
1	10 + 64	28.41' Rt	
1	10 + 67	26.26' Lt	
1	10 + 82	19.88' Lt	
1	10 + 84	23.86' Lt	
1	11 + 25	25' Lt	
1	11 41	26.80' Rt	
1	11 75	25' Lt	
1	11 + 85	30' Rt	
1	12 + 25	30' Rt	
1	12 + 40	30' Rt	
1	12 + 50	30' Lt	
1	12 + 65	30' Rt	
1	13 + 0	30' Rt	
1	13 0	30' Lt	
1	13 50	30' Rt	
1	13 + 50	30' Lt	
1	14 + 0	30' Rt	
1	14 + 0	30' Lt	
1	17 + 0	30' Rt	
1	17 + 0	30' Lt	
1	18 + 0	30' Lt	
1	18 50	30' Rt	
1	18 91	30.24' Rt	
1	18 + 91	4' Rt	
1	18 + 92	20.23' Lt	
1	18 + 92	29.47' Lt	
1	19 + 75	19.97' Lt	
1	19 + 85	10' Lt	
1	21 + 18	9.91' Rt	
1	21 20	10' Lt	
31	TOTAL		

A2008514 TREE, QUERCUS BICOLOR (SWAMP WHITE OAK), 1-3/4" CALIPER, BALLED AND BURLAPPED

EACH	LOCATION	REMARKS
34	Location to be determined by the District 2 Landscape Architect	
34	TOTAL	

C2001748 SHRUB, CORNUS SERICEA CARDINAL (CARDINAL REDOSIER DOGWOOD), 4' HEIGHT, BALLED AND BURLAPPED

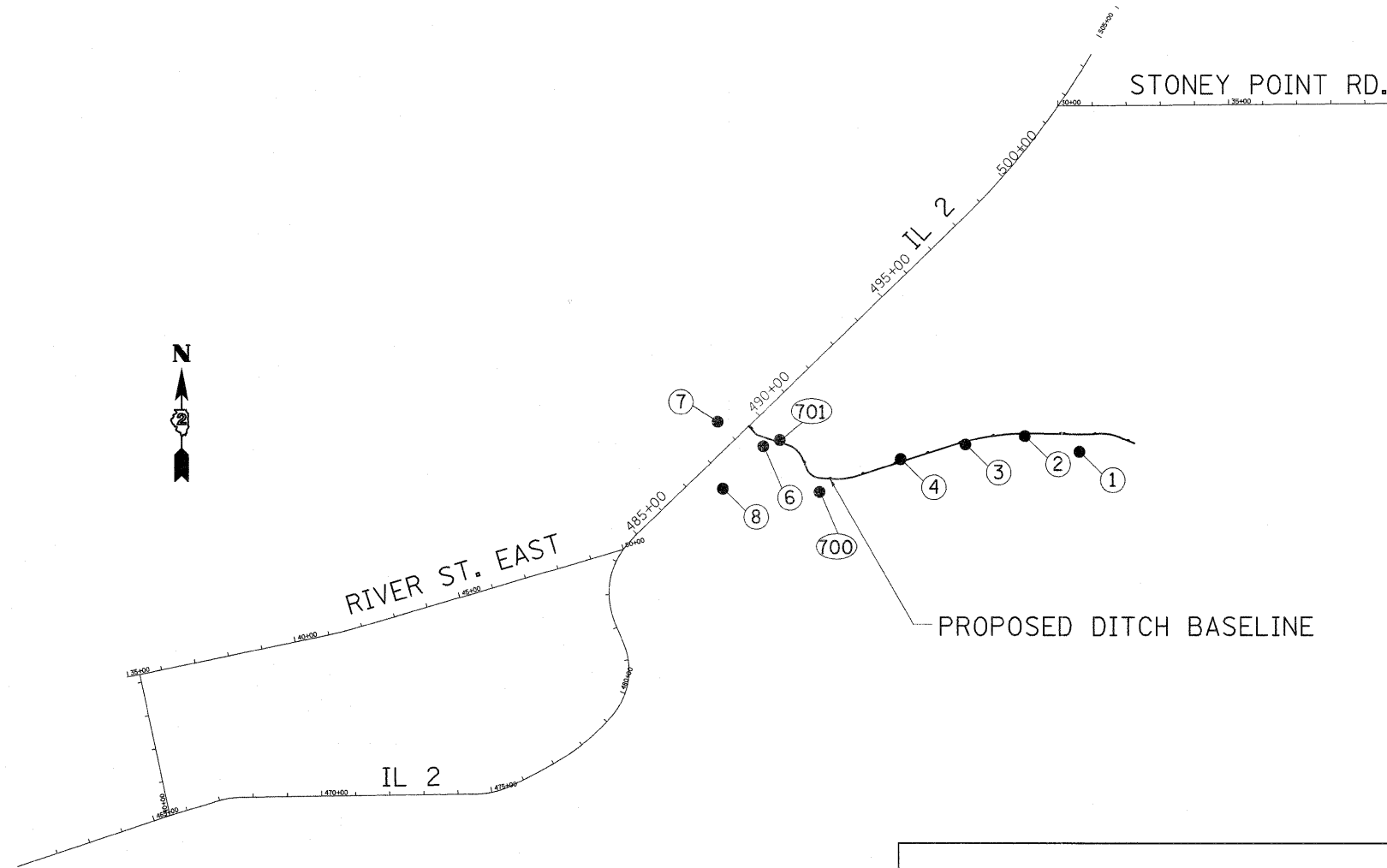
EACH	LOCATION	REMARKS
40	Location to be determined by the District 2 Landscape Architect	
40	TOTAL	

Z0025500 FURNISHING AND INSTALLING PROPERTY MARKERS

EACH	LOCATION	REMARKS
3	To be used if any existing markers get damaged	
3	TOTAL	

		20200100				25000310	28000250
	LOCATION	EARTH EXCAVATION (CU YD)	EARTH EXCAVATION ADJUSTED FOR SHRINKAGE (CU YD)	EMBANKMENT (FILL) (CU YD)	EARTHWORK BALANCE WASTE (+) SHORTAGE (-) (CU YD)	SEEDING CLASS 4 (ACRE)	TEMPORARY EROSION CONTROL SEEDING (POUND)
Drainage Ditch							
	10+40 TO 16+00	1170.1	877.6	148.7	728.9	0.42	42.1
	16+00 TO 21+20	512.2	384.2	4.4	379.8	0.54	54.0
	TOTALS	1682.3	1261.7	153.1	1108.6	0.96	96.1

HORIZONTAL & VERTICAL CONTROL

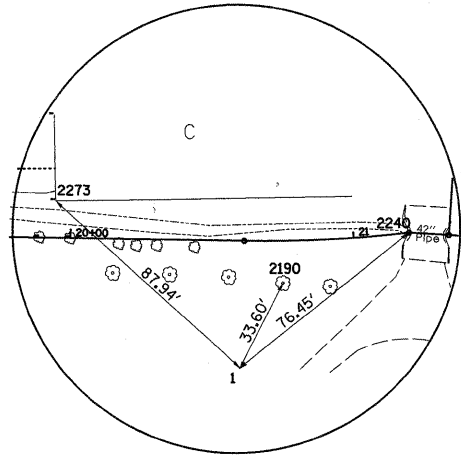


CURVE POINT NUMBERS					
CHAIN	CURVE	PI	CC	PC	PT
FA561-742	250	250	251	252	253
FA561-742	260	260	261	262	263
FA561-742	270	270	271	272	273
FA561-742	280	280	281	282	283
FA561-742	290	290	291	292	293
FA561-742	300	300	301	302	303
FA561-742	310	310	311	312	313
FA561-742	320	320	321	322	323
FA561-742	330	330	331	332	333
FA561-742	340	340	341	342	343
FA561-742	350	350	351	352	353
FA561-742	360	360	361	362	363
FA561-742	370	370	371	372	373
FA561-742	380	380	381	382	383
FA561-742	390	390	391	392	393
FA561-742	1200	1200	1201	1202	1203
FA561-742	1210	1210	1211	1212	1213
FA561-742	1220	1220	1221	1222	1223
FA561-742	1230	1230	1231	1232	1233
FA561-742	1240	1240	1241	1242	1243
FA561-742	1250	1250	1251	1252	1253
FA561-742	1260	1260	1261	1262	1263

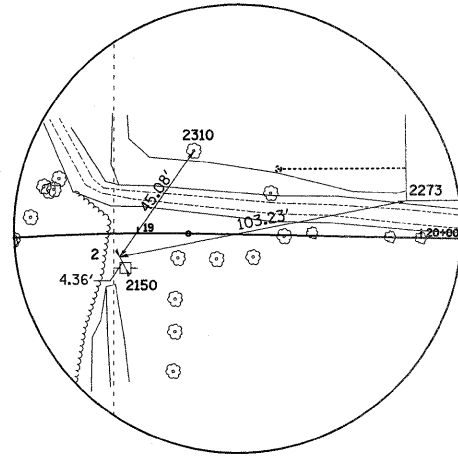
APPARENT PROPERTY CORNERS							
POINT	NORTH	EAST	ELEVATION	CHAIN	STATION	OFFSET	DESCRIPTION
700	1887571.0592	2487025.4326	663.0199	FA561-742	489+73.7952	280.9281' RT	PROPERTY CORNER, PROPERTY CORNER
701	1887681.4541	2486967.1953	656.6700	FA561-742	490+08.9444	161.1652' RT	PROPERTY CORNER, PROPERTY CORNER

HORIZONTAL CONTROL POINTS							
POINT	NORTH	EAST	ELEVATION	CHAIN	STATION	OFFSET	DESCRIPTION
1	1887691.5460	2487793.9347	667.1374	PSTREAM	20+60.6774	45.0341' RT	TOPO SURVEY POINT, NAIL
2	1887730.7270	2487627.6141	665.3077	PSTREAM	18+93.4206	8.3427' RT	TOPO SURVEY POINT, TOPO SURVEY POINT
3	1887699.9989	2487459.3367	664.1575	PSTREAM	17+19.2168	16.2498' RT	TOPO SURVEY POINT, TOPO SURVEY POINT
4	1887669.5519	2487269.9768	658.6703	PSTREAM	15+28.6512	11.9658' LT	TOPO SURVEY POINT, TOPO SURVEY POINT
6	1887655.7654	2486938.5336	656.2323	FA561-742	489+70.4864	159.6201' RT	TOPO SURVEY POINT, NAIL
7	1887768.6982	2486756.1420	654.0910	FA561-742	489+18.3508	48.4721' LT	TOPO SURVEY POINT, NAIL
8	1887598.6991	2486741.9328	655.3499	FA561-742	487+90.3457	63.7749' RT	TOPO SURVEY POINT, TOPO SURVEY POINT

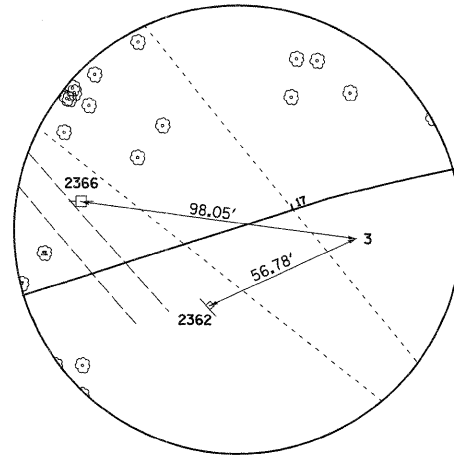
HORIZONTAL & VERTICAL CONTROL



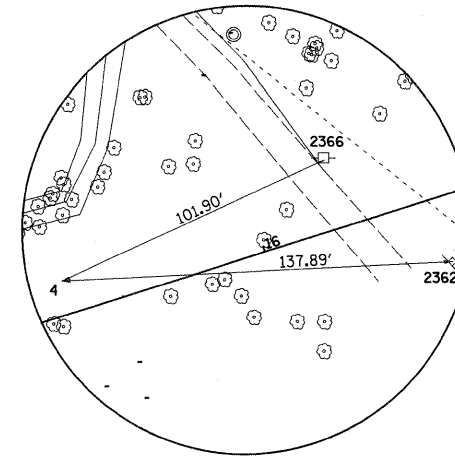
HORIZONTAL CONTROL POINT NO. 1



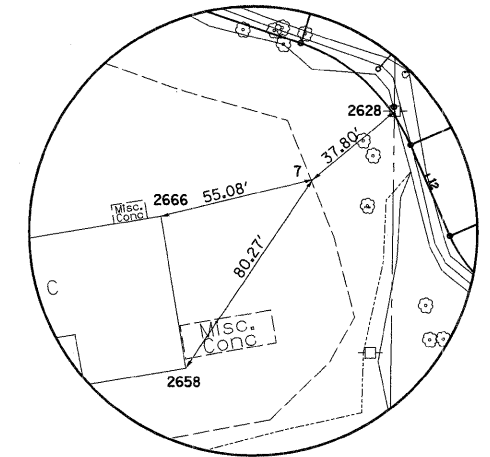
HORIZONTAL CONTROL POINT NO. 2



HORIZONTAL CONTROL POINT NO. 3

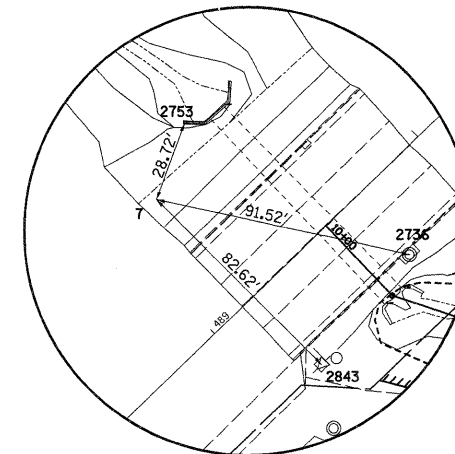


HORIZONTAL CONTROL POINT NO. 4

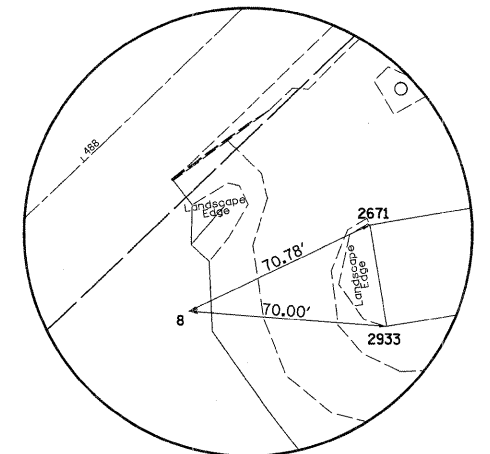


HORIZONTAL CONTROL POINT NO. 6

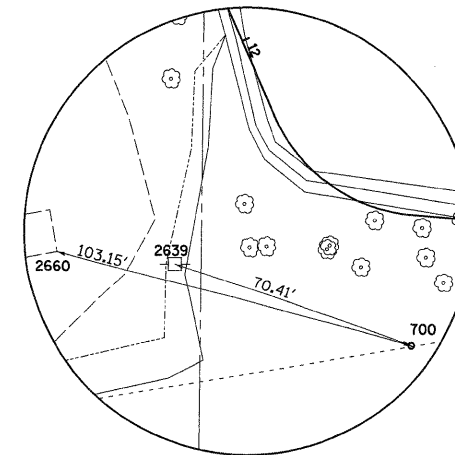
REFERENCE TIES						
POINT	NORTH	EAST	CHAIN	STATION	OFFSET	DESCRIPTION
2150	1887726.8609	2487629.6398	PSTREAM	18+95.4179	12.2378' RT	POWER POLE
2190	1887723.7689	2487789.8714	PSTREAM	20+56.0560	12.8865' RT	TREE DECIDUOUS
2240	1887739.3715	2487853.5768	PSTREAM	21+19.6484	0.0000'	PIPE CULVERT
2273	1887750.7313	2487728.8878	PSTREAM	19+94.6140	13.0143' LT	COMMERCIAL BUILDING
2310	1887768.2774	2487653.7068	PSTREAM	19+19.1400	29.2541' LT	TREE DECIDUOUS
2362	1887676.3903	2487407.6970	PSTREAM	16+61.9455	23.3366' RT	WARNING SIGN
2366	1887712.9928	2487362.1544	PSTREAM	16+29.6673	25.3665' LT	POWER POLE
2596	1887710.5238	2486986.6154	PSTREAM	11+65.7722	35.1452' LT	TREE DECIDUOUS
2598	1887687.9189	2486998.0767	PSTREAM	11+82.3348	31.18' LT	COMMERCIAL BUILDING
2626	1887663.1960	2487019.1201	PSTREAM	12+10.7392	40.2584' LT	COMMERCIAL BUILDING, END
2628	1887679.9157	2486967.6089	FA561_742	490+08.1691	162.5569' RT	POWER POLE
2658	1887589.0067	2486893.9620	FA561_742	488+91.9996	176.4479' RT	COMMERCIAL BUILDING, BEGINNING
2660	1887597.9432	2486925.8429	PSTREAM	12+26.9987	71.7747' RT	MISC. CONCRETE SLAB
2666	1887642.7662	2486885.0110	FA561_742	489+23.0381	131.6504' RT	COMMERCIAL BUILDING
2671	1887629.3080	2486805.7511	FA561_742	488+56.8092	86.0764' RT	COMMERCIAL BUILDING, END
2639	1887594.4617	2486959.0209	PSTREAM	12+36.5740	46.2616' RT	POWER POLE
2736	1887749.2295	2486845.5711	FA561_742	489+68.9309	27.8053' RT	MANHOLE LID
2753	1887795.6463	2486766.0921	FA561_742	489+44.2649	60.8684' LT	HEADWALL, CONCRETE
2933	1887593.3507	2486811.7405	FA561_742	488+36.0507	116.0412' RT	COMMERCIAL BUILDING, BEGINNING



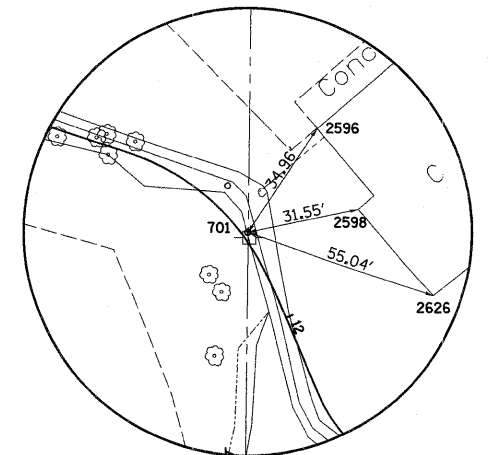
HORIZONTAL CONTROL POINT NO. 7



HORIZONTAL CONTROL POINT NO. 8



HORIZONTAL CONTROL POINT NO. 700



HORIZONTAL CONTROL POINT NO. 701

HORIZONTAL & VERTICAL CONTROL

EXISTING IL 2 CHAIN INFORMATION

Chain FA561_742 contains:
 5 CUR 250 CUR 260 CUR 270 CUR 280 CUR 290 CUR 300 CUR 310 CUR 320 20 21 22 24 C-
 UR 330 CUR 340 CUR 350 CUR 360 CUR 370 CUR 380 CUR 390 CUR 1200 25 23 CUR 1210 -
 CUR 1220 CUR 1230 CUR 1240 26 80 CUR 1250 CUR 1260 39

Beginning chain FA561_742 description

Point 5 N 1,878,334.6825 E 2,442,702.8242 Sta 0+00.0000

Course from 5 to PC 250 86° 59' 37.2256" Dist 2,946.1273'

Curve Data

Curve 370

Feature: 111
 P.I. Station 480+52.2307 N 1,887,011.4558 E 2,486,498.6575
 Delta = 63° 34' 06.9683" (LT)
 Degree = 28° 18' 26.5993"
 Tangent = 125.4201'
 Length = 224.5654'
 Radius = 202.4057'
 External = 35.7083'
 Long Chord = 213.2235'
 Mid. Ord. = 30.3534'
 P.C. Station 479+26.8106 N 1,886,915.5550 E 2,486,417.8290
 P.T. Station 481+51.3760 N 1,887,126.5230 E 2,486,448.7603
 C.C. N 1,887,045.9978 E 2,486,263.0622

Course from PT 370 to PC 380 336° 33' 24.3387" Dist 48.7404'

Curve Data

Curve 380

Feature: 111
 P.I. Station 482+41.5523 N 1,887,209.2557 E 2,486,412.8845
 Delta = 17° 08' 14.2374" (RT)
 Degree = 20° 50' 05.3889"
 Tangent = 41.4359'
 Length = 82.2531'
 Radius = 275.0000'
 External = 3.1042'
 Long Chord = 81.9468'
 Mid. Ord. = 3.0695'
 P.C. Station 482+00.1164 N 1,887,171.2402 E 2,486,429.3694
 P.T. Station 482+82.3695 N 1,887,250.4409 E 2,486,408.3333
 C.C. N 1,887,280.6463 E 2,486,681.6694

Curve Data

Curve 390

Feature: 111
 P.I. Station 483+67.8415 N 1,887,335.3958 E 2,486,398.9453
 Delta = 44° 17' 36.9819" (RT)
 Degree = 27° 17' 01.3335"
 Tangent = 85.4721'
 Length = 162.3445'
 Radius = 210.0000'
 External = 16.7277'
 Long Chord = 158.3320'
 Mid. Ord. = 15.4936'
 P.C. Station 482+82.3695 N 1,887,250.4409 E 2,486,408.3333
 P.T. Station 484+44.7140 N 1,887,402.7601 E 2,486,451.5526
 C.C. N 1,887,273.5068 E 2,486,617.0627

Course from PT 390 to PC 1200 217° 59' 28.9027" Dist 0.0000'

Curve Data

Curve 1200

Feature: 111
 P.I. Station 484+72.1179 N 1,887,424.3583 E 2,486,468.4195
 Delta = 7° 50' 33.4420" (RT)
 Degree = 14° 19' 54.1784"
 Tangent = 27.4039'
 Length = 54.7221'
 Radius = 399.7831'
 External = 0.9381'
 Long Chord = 54.6794'
 Mid. Ord. = 0.9359'
 P.C. Station 484+44.7140 N 1,887,402.7601 E 2,486,451.5526
 P.T. Station 484+99.4362 N 1,887,443.4529 E 2,486,488.0757
 C.C. N 1,887,156.6969 E 2,486,766.6390

Course from PT 1200 to 25 45° 49' 49.0000" Dist 116.0226'

Point 25 N 1,887,524.2959 E 2,486,571.2963 Sta 486+15.4588

Course from 25 to 23 46° 24' 21.9397" Dist 195.5707'

Point 23 N 1,887,659.1502 E 2,486,712.9374 Sta 488+11.0295

Course from 23 to PC 1210 45° 49' 49.0000" Dist 1,014.4900'

Curve Data

Curve 1210

Feature: 111
 P.I. Station 501+35.1775 N 1,888,581.7982 E 2,487,662.7209
 Delta = 15° 23' 05.0000" (LT)
 Degree = 2° 29' 57.0528"
 Tangent = 309.6580'
 Length = 615.5905'
 Radius = 2,292.5819'
 External = 20.8182'
 Long Chord = 613.7428'
 Mid. Ord. = 20.6308'
 P.C. Station 498+25.5195 N 1,888,366.0327 E 2,487,440.6097
 P.T. Station 504+41.1100 N 1,888,848.7577 E 2,487,819.6306
 C.C. N 1,890,010.4534 E 2,485,843.1704

Course from PT 1210 to PC 1220 30° 26' 44.0000" Dist 283.6510'

Curve Data

Curve 1220

Feature: 111
 P.I. Station 512+44.4610 N 1,889,541.3355 E 2,488,226.7041
 Delta = 5° 19' 29.0000" (RT)
 Degree = 0° 30' 45.5656"
 Tangent = 519.7000'
 Length = 1,038.6518'
 Radius = 11,176.2384'
 External = 12.0766'
 Long Chord = 1,038.2781'
 Mid. Ord. = 12.0636'
 P.C. Station 507+24.7610 N 1,889,093.2964 E 2,487,963.3620
 P.T. Station 517+63.4128 N 1,889,963.0030 E 2,488,530.4879
 C.C. N 1,883,430.0798 E 2,497,598.5207

Course from PT 1220 to PC 1230 35° 46' 13.0000" Dist 1,211.7443'

Curve Data

Curve 1230

Feature: 111
 P.I. Station 534+76.1773 N 1,891,352.6839 E 2,489,531.6619
 Delta = 38° 41' 01.5944" (RT)
 Degree = 4° 00' 50.9618"
 Tangent = 501.0202'
 Length = 963.6839'
 Radius = 1,427.3431'
 External = 85.3795'
 Long Chord = 945.4844'
 Mid. Ord. = 80.5606'
 P.C. Station 529+75.1571 N 1,890,946.1726 E 2,489,238.7971
 P.T. Station 539+38.8410 N 1,891,486.9629 E 2,490,014.3527
 C.C. N 1,890,111.8379 E 2,490,396.8964

Course from PT 1230 to PC 1240 74° 27' 14.5944" Dist 1,546.1877'

Curve Data

Curve 1240

Feature: 111
 P.I. Station 561+87.4242 N 1,892,089.6080 E 2,492,180.6734
 Delta = 10° 30' 23.0000" (LT)
 Degree = 0° 44' 59.9990"
 Tangent = 702.3954'
 Length = 1,400.8524'
 Radius = 7,639.4400'
 External = 32.2223'
 Long Chord = 1,398.8905'
 Mid. Ord. = 32.0870'
 P.C. Station 554+85.0288 N 1,891,901.3582 E 2,491,503.9745
 P.T. Station 568+85.8811 N 1,892,398.0944 E 2,492,811.7007
 C.C. N 1,899,261.3158 E 2,489,456.5203

Course from PT 1240 to 26 63° 56' 51.5944" Dist 1,001.0138'

Point 26 N 1,892,837.7316 E 2,493,711.0048 Sta 578+86.8949

Course from 26 to 80 153° 56' 56.9747" Dist 10.9778'

Equation: Sta 578+97.8728 (BK) = Sta 578+86.8949 (AH) -----
 End Region 1
 Begin Region 2

Point 80 N 1,892,827.8691 E 2,493,715.8259 Sta 578+86.8949

Course from 80 to PC 1250 63° 56' 51.5944" Dist 3,511.4492'

FILE NAME =	USER NAME = enkneyde	DESIGNED -	REVISED -	STATE OF ILLINOIS DEPARTMENT OF TRANSPORTATION	HORIZONTAL & VERTICAL CONTROL SHEETS				F.A.P. RTE.	SECTION	COUNTY	TOTAL SHEETS	SHEET NO.
cd:\pw\work\pwidot\enkneyde\d0130575\0212007-sh-t-ATB.dgn		DRAWN -	REVISED -		SCALE:	SHEET NO.	OF	SHEETS	STA.	TO STA.	LEE	25	10
		CHECKED -	REVISED -		CONTRACT NO. 64D77								
		DATE	REVISED -		ILLINOIS FED. AID PROJECT								
PLOT SCALE = 50.0000' / in.		PLOT DATE = Tue Dec 06 14:59:57 2011											

HORIZONTAL & VERTICAL CONTROL

PROPOSED STREAM BASELINE

Chain PSTREAM contains:
60001 60002 CUR 60200 CUR 60210 CUR 60220 CUR 60230 CUR 60240 CUR 60250 60003

Beginning chain PSTREAM description

Point 60001 N 1,887,759.28 E 2,486,816.01 Sta 10+00.0000

Course from 60001 to 60002 136° 14' 18.3605" Dist 33.97'

Point 60002 N 1,887,734.75 E 2,486,839.51 Sta 10+33.9705

Course from 60002 to PC 60200 108° 14' 31.1825" Dist 99.75'

Curve Data

Curve 60200
P.I. Station 11+62.5058 N 1,887,694.51 E 2,486,961.59
Delta = 48° 14' 22.4514" (RT)
Degree = 89° 07' 50.2299"
Tangent = 28.78'
Length = 54.12'
Radius = 64.28'
External = 6.15'
Long Chord = 52.54'
Mid. Ord. = 5.61'
P.C. Station 11+33.7240 N 1,887,703.52 E 2,486,934.25
P.T. Station 11+87.8463 N 1,887,668.12 E 2,486,973.07
C.C. N 1,887,642.47 E 2,486,914.13

Course from PT 60200 to PC 60210 156° 28' 47.1619" Dist 35.02'

Curve Data

Curve 60210
P.I. Station 12+50.8009 N 1,887,610.40 E 2,486,998.19
Delta = 61° 50' 07.1582" (LT)
Degree = 122° 49' 42.3848"
Tangent = 27.94'
Length = 50.34'
Radius = 46.65'
External = 7.73'
Long Chord = 47.93'
Mid. Ord. = 6.63'
P.C. Station 12+22.8637 N 1,887,636.01 E 2,486,987.04
P.T. Station 12+73.2065 N 1,887,608.13 E 2,487,026.04
C.C. N 1,887,654.63 E 2,487,029.82

Course from PT 60210 to PC 60220 94° 38' 42.9249" Dist 30.09'

Curve Data

Curve 60220
P.I. Station 13+50.1145 N 1,887,601.91 E 2,487,102.69
Delta = 24° 23' 37.1796" (LT)
Degree = 26° 27' 10.4616"
Tangent = 46.82'
Length = 92.22'
Radius = 216.60'
External = 5.00'
Long Chord = 91.52'
Mid. Ord. = 4.89'
P.C. Station 13+03.2975 N 1,887,605.70 E 2,487,056.03
P.T. Station 13+95.5129 N 1,887,617.72 E 2,487,146.76
C.C. N 1,887,821.58 E 2,487,073.57

Course from PT 60220 to PC 60230 72° 19' 24.2591" Dist 317.87'

Curve Data

Curve 60230
P.I. Station 18+16.2570 N 1,887,740.83 E 2,487,549.00
Delta = 15° 58' 25.2534" (RT)
Degree = 7° 48' 52.3115"
Tangent = 102.87'
Length = 204.41'
Radius = 733.20'
External = 7.18'
Long Chord = 203.75'
Mid. Ord. = 7.11'
P.C. Station 17+13.3848 N 1,887,714.24 E 2,487,449.62
P.T. Station 19+17.7948 N 1,887,739.05 E 2,487,651.85
C.C. N 1,887,005.97 E 2,487,639.14

Course from PT 60230 to PC 60240 90° 59' 37.0744" Dist 143.60'

Curve Data

Curve 60240
P.I. Station 20+90.5628 N 1,887,736.06 E 2,487,824.60
Delta = 7° 31' 19.4621" (LT)
Degree = 12° 54' 44.3247"
Tangent = 29.17'
Length = 58.26'
Radius = 443.73'
External = 0.96'
Long Chord = 58.21'
Mid. Ord. = 0.96'
P.C. Station 20+61.3934 N 1,887,736.56 E 2,487,795.43
P.T. Station 21+19.6484 N 1,887,739.37 E 2,487,853.58
C.C. N 1,888,180.22 E 2,487,803.13

Course from PT 60240 to PC 60250 93° 33' 20.7598" Dist 14.11'

Curve Data

Curve 60250
P.I. Station 21+53.7552 N 1,887,737.26 E 2,487,887.62
Delta = 18° 59' 04.5067" (RT)
Degree = 47° 54' 07.7939"
Tangent = 20.00'
Length = 39.63'
Radius = 119.61'
External = 1.66'
Long Chord = 39.45'
Mid. Ord. = 1.64'
P.C. Station 21+33.7559 N 1,887,738.50 E 2,487,867.66
P.T. Station 21+73.3879 N 1,887,729.59 E 2,487,906.09
C.C. N 1,887,619.12 E 2,487,860.24

Course from PT 60250 to 60003 112° 32' 26.6592" Dist 50.07'

Point 60003 N 1,887,710.39 E 2,487,952.34 Sta 22+23.4623

Ending chain PSTREAM description

STONEY POINT RD

Chain STONEY_PT contains:
30 29

Beginning chain STONEY_PT description

Point 30 N 1,888,697.9927 E 2,487,722.8987 Sta 30+00.0000

Course from 30 to 29 89° 32' 58.0000" Dist 1,873.5682'

Point 29 N 1,888,712.7257 E 2,489,596.4090 Sta 48+73.5682

Ending chain STONEY_PT description

RIVER ST. EAST

Chain RIVER_ST_E contains:
16 17 19 CUR 1340 28

Beginning chain RIVER_ST_E description

Point 16 N 1,887,027.6020 E 2,484,993.4375 Sta 34+96.5499

Course from 16 to 17 78° 39' 41.4802" Dist 38.1092'

Point 17 N 1,887,035.0944 E 2,485,030.8029 Sta 35+34.6591

Course from 17 to 19 78° 22' 27.2481" Dist 536.6233'

Point 19 N 1,887,143.2339 E 2,485,556.4172 Sta 40+71.2824

Course from 19 to PC 1340 77° 41' 11.7477" Dist 48.4786'

Curve Data

Curve 1340
Feature: 111
P.I. Station 41+46.1781 N 1,887,159.2061 E 2,485,629.5900
Delta = 3° 33' 36.7718" (LT)
Degree = 6° 44' 26.2936"
Tangent = 26.4171'
Length = 52.8172'
Radius = 850.0054'
External = 0.4104'
Long Chord = 52.8087'
Mid. Ord. = 0.4102'
P.C. Station 41+19.7610 N 1,887,153.5724 E 2,485,603.7806
P.T. Station 41+72.5782 N 1,887,166.4316 E 2,485,654.9997
C.C. N 1,887,984.0240 E 2,485,422.5094

Course from PT 1340 to 28 73° 38' 56.9600" Dist 827.4219'

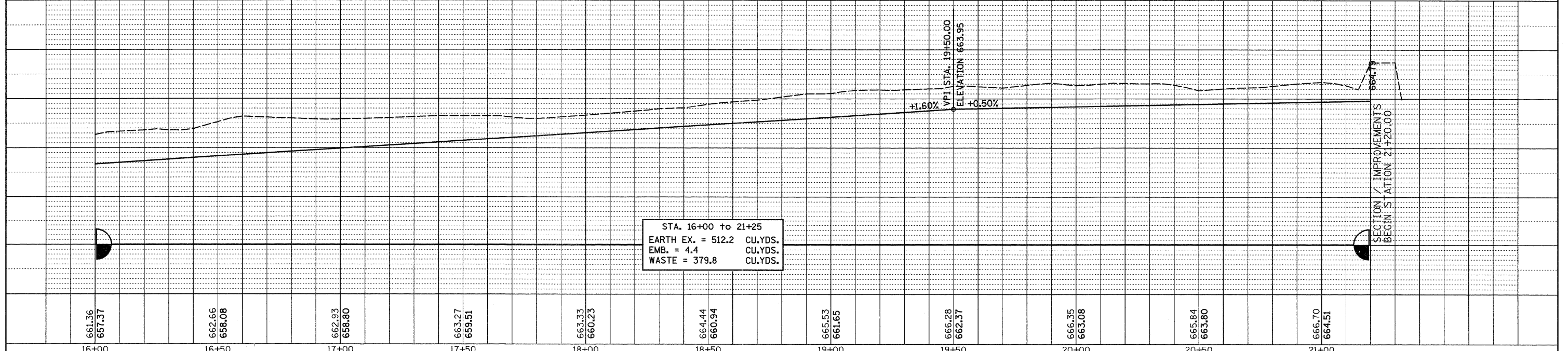
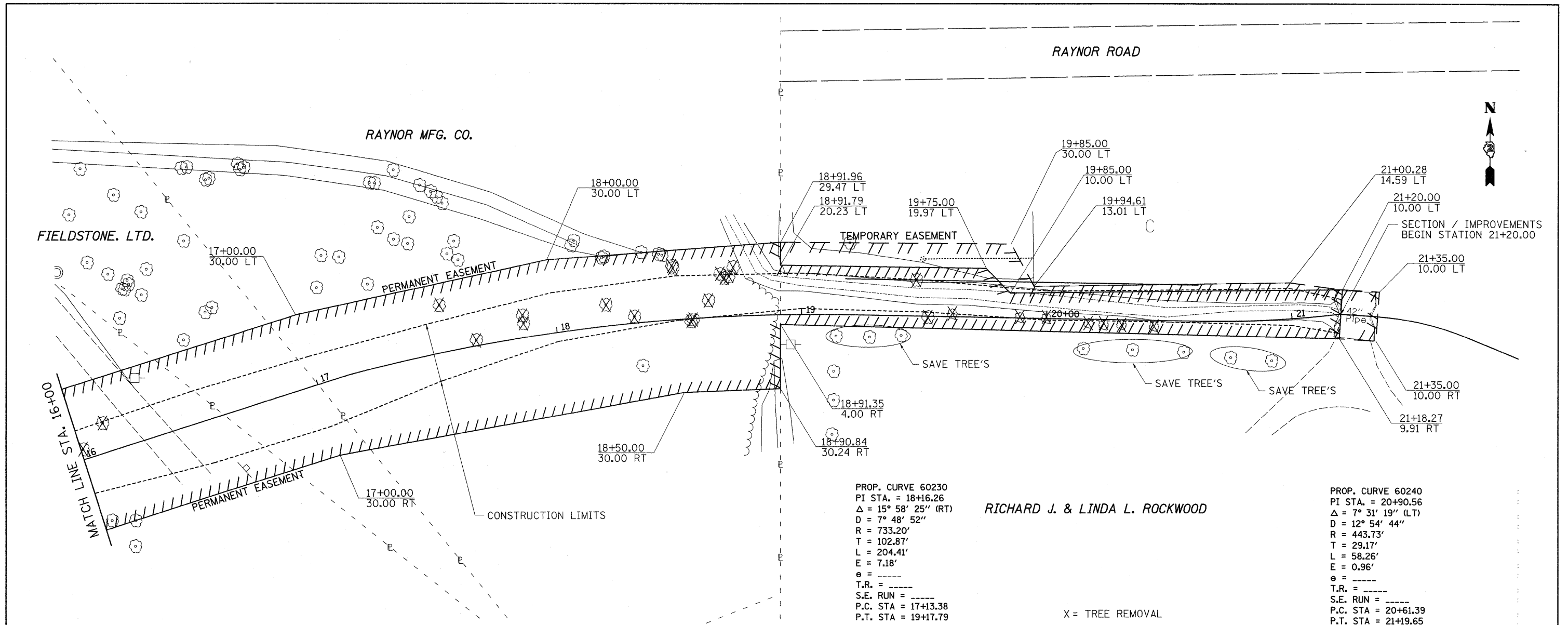
Point 28 N 1,887,399.3660 E 2,486,448.9572 Sta 50+00.0000

Ending chain RIVER_ST_E description

FILE NAME =	USER NAME = ankneyde	DESIGNED -	REVISED -	STATE OF ILLINOIS DEPARTMENT OF TRANSPORTATION	HORIZONTAL & VERTICAL CONTROL SHEETS				F.A.P. RTE.	SECTION	COUNTY	TOTAL SHEETS	SHEET NO.
ct:\pw_work\p\dot\ankneyde\d0130575\0212807-shr-ATB.dgn		DRAWN -	REVISED -		742	39M-2	LEE	25	11				
PLOT SCALE = 50.0000' / in.		CHECKED -	REVISED -		CONTRACT NO. 64D77								
PLOT DATE = Tue Dec 06 14:59:59 2011		DATE -	REVISED -		SCALE:	SHEET NO.	OF	SHEETS	STA.	TO	STA.	ILLINOIS FED. AID PROJECT	

DATE	BY	SURVEYED	PLANNED
		NO.	NO.
		NOTE BOOK NO.	FILE NAME

DATE	BY	PROFILE	NOTATIONS
		NO.	NO.
		NOTE BOOK NO.	FILE NAME



661.36 657.37	662.66 658.08	662.93 658.80	663.27 659.51	663.33 660.23	664.44 660.94	665.53 661.65	666.28 662.37	666.35 663.08	665.84 663.80	666.70 664.51
16+00	16+50	17+00	17+50	18+00	18+50	19+00	19+50	20+00	20+50	21+00

FILE NAME =	USER NAME = ankneyde	DESIGNED =	REVISED =
ci:\pw_work\pwwidot\ankneyde\d0138575\0212897-sh-t-p1npr.f.dgn		DRAWN =	REVISED =
		CHECKED = 28.0000 / / sn	REVISED =
		PLOT DATE = Wed Dec 07 13:31:57 2011	REVISED =

**STATE OF ILLINOIS
DEPARTMENT OF TRANSPORTATION**

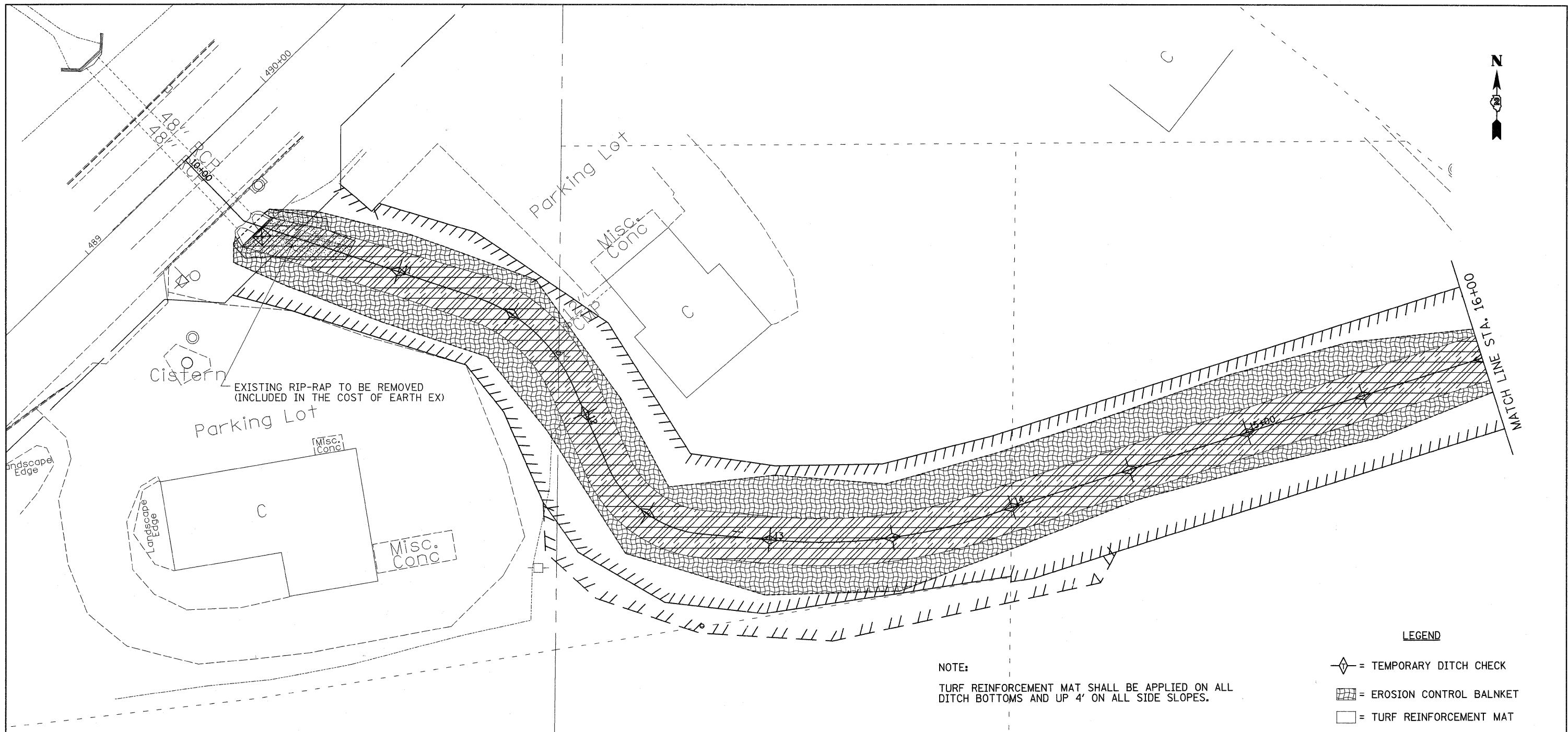
PLAN & PROFILE SHEETS

SCALE: SHEET NO. OF SHEETS STA. TO STA.

F.A.P. RTE. 742	SECTION 39M-2	COUNTY LEE	TOTAL SHEETS 25	SHEET NO. 13
CONTRACT NO. 64D77				
ILLINOIS FED. AID PROJECT				

PLAN SURVEYED _____ BY _____ DATE _____
 PLOTTED _____ CHECKED _____
 NOTE BOOK _____ NO. _____
 STRUCTURE NOTATION CHKD _____
 PADD FILE NAME _____

PROFILE SURVEYED _____ BY _____ DATE _____
 PLOTTED _____ CHECKED _____
 NOTE BOOK _____ NO. _____
 STRUCTURE NOTATION CHKD _____



EXISTING RIP-RAP TO BE REMOVED
 (INCLUDED IN THE COST OF EARTH EX)

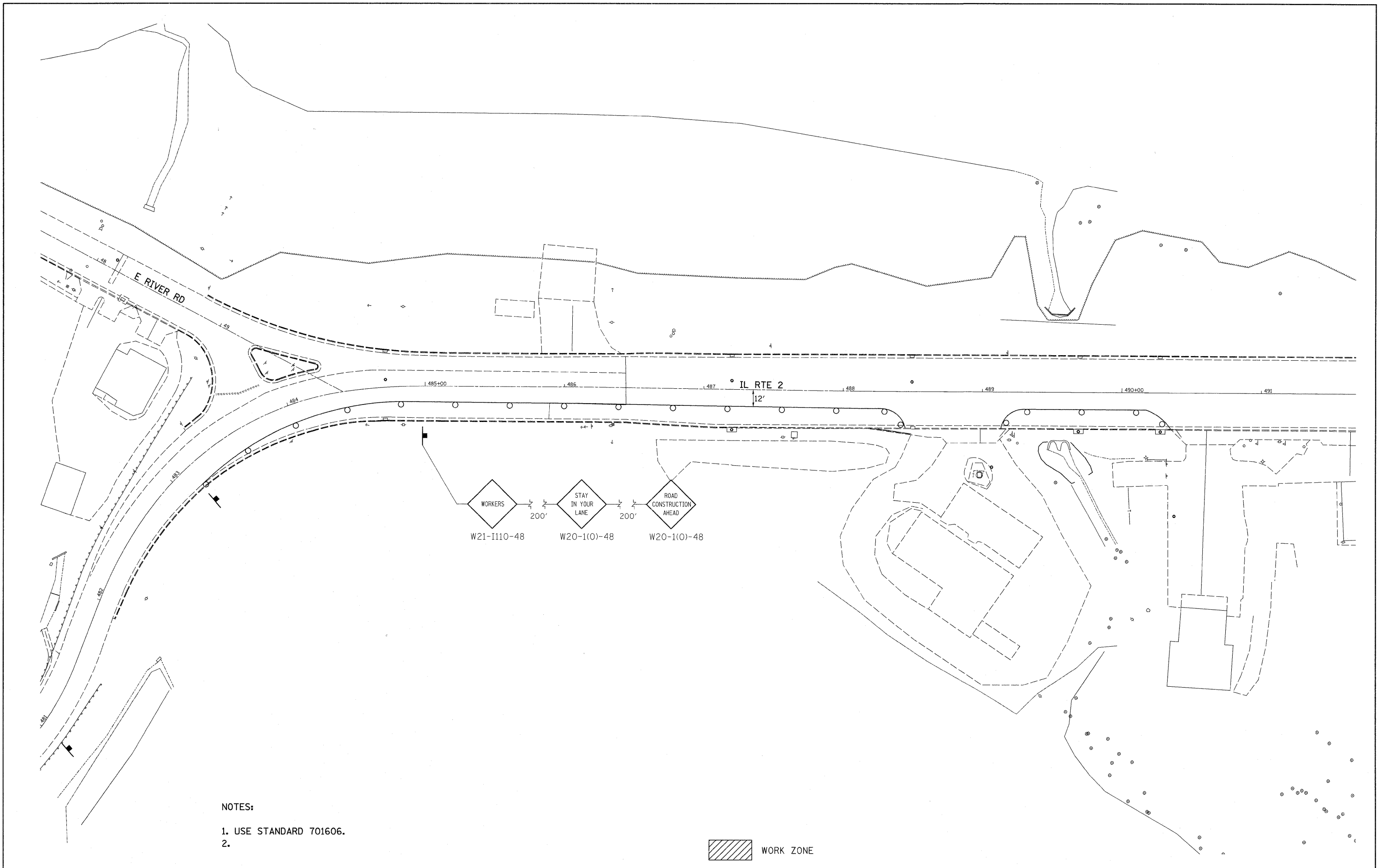
NOTE:

TURF REINFORCEMENT MAT SHALL BE APPLIED ON ALL
 DITCH BOTTOMS AND UP 4' ON ALL SIDE SLOPES.

LEGEND

- ◊ = TEMPORARY DITCH CHECK
- [Grid Pattern] = EROSION CONTROL BALNKET
- [Hatched] = TURF REINFORCEMENT MAT

660		660
655		655
650		650
645		645



NOTES:

1. USE STANDARD 701606.
- 2.



FILE NAME =	USER NAME = anikneyde	DESIGNED -	REVISED -
c:\pw_work\pw\dot\ankneyde\d0130575\0212807-sht-plnprf.dgn		DRAWN -	REVISED -
		CHECKED -	REVISED -
		DATE -	REVISED -

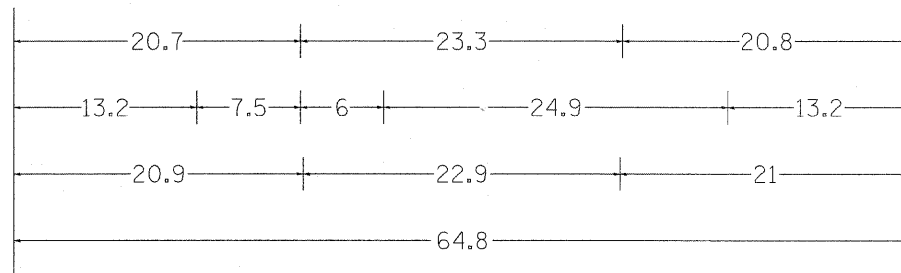
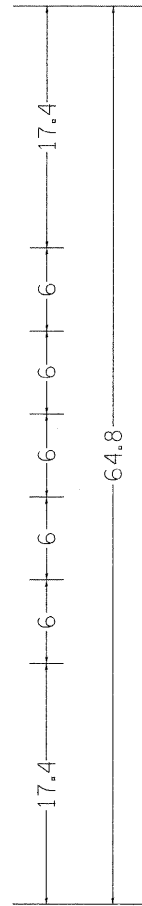
**STATE OF ILLINOIS
DEPARTMENT OF TRANSPORTATION**

LANE CLOSURE DETAIL

SCALE: SHEET OF SHEETS STA. TO STA.

F.A. RTE.	SECTION	COUNTY	TOTAL SHEETS	SHEET NO.
742	39M-2	LEE	25	16
CONTRACT NO. 64D77				
ILLINOIS FED. AID PROJECT				

STAY IN YOUR LANE SIGN DETAIL



48.0" across sides 3.8" Radius, 1.0" Border, 0.6" Indent, Black on Orange
 "STAY" E Mod; "IN YOUR" E Mod; "LANE" E Mod;
 Table of letter and object lefts.

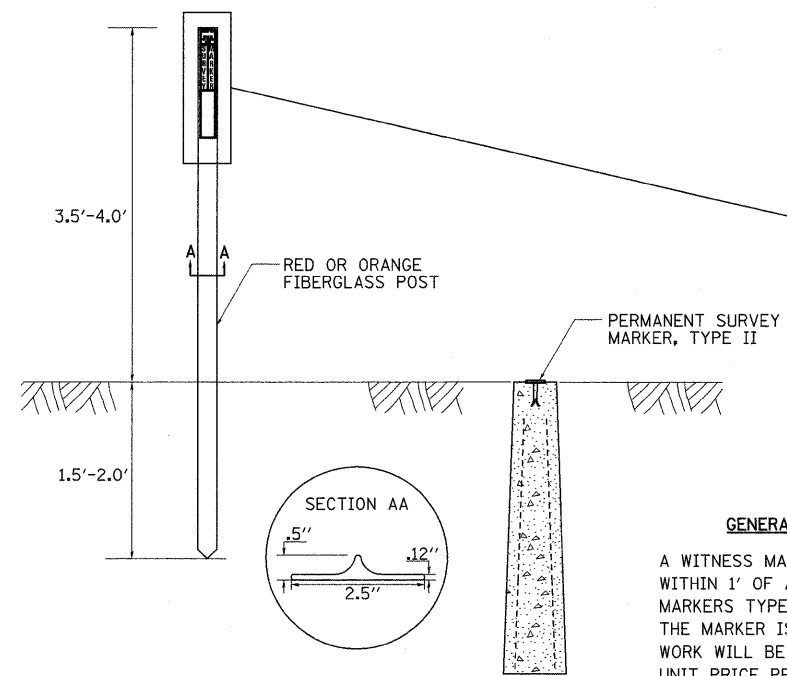
S	T	A	Y
20.7	26.8	31.6	38.0

I	N	Y	O	U	R
13.2	15.9	26.7	33.9	40.5	46.8

L	A	N	E
20.9	25.8	33.1	39.4

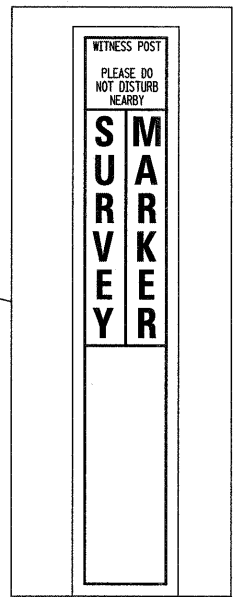
REVISED - 4-4-11

WITNESS MARKER FOR PERMANENT SURVEY MARKERS, TYPE II

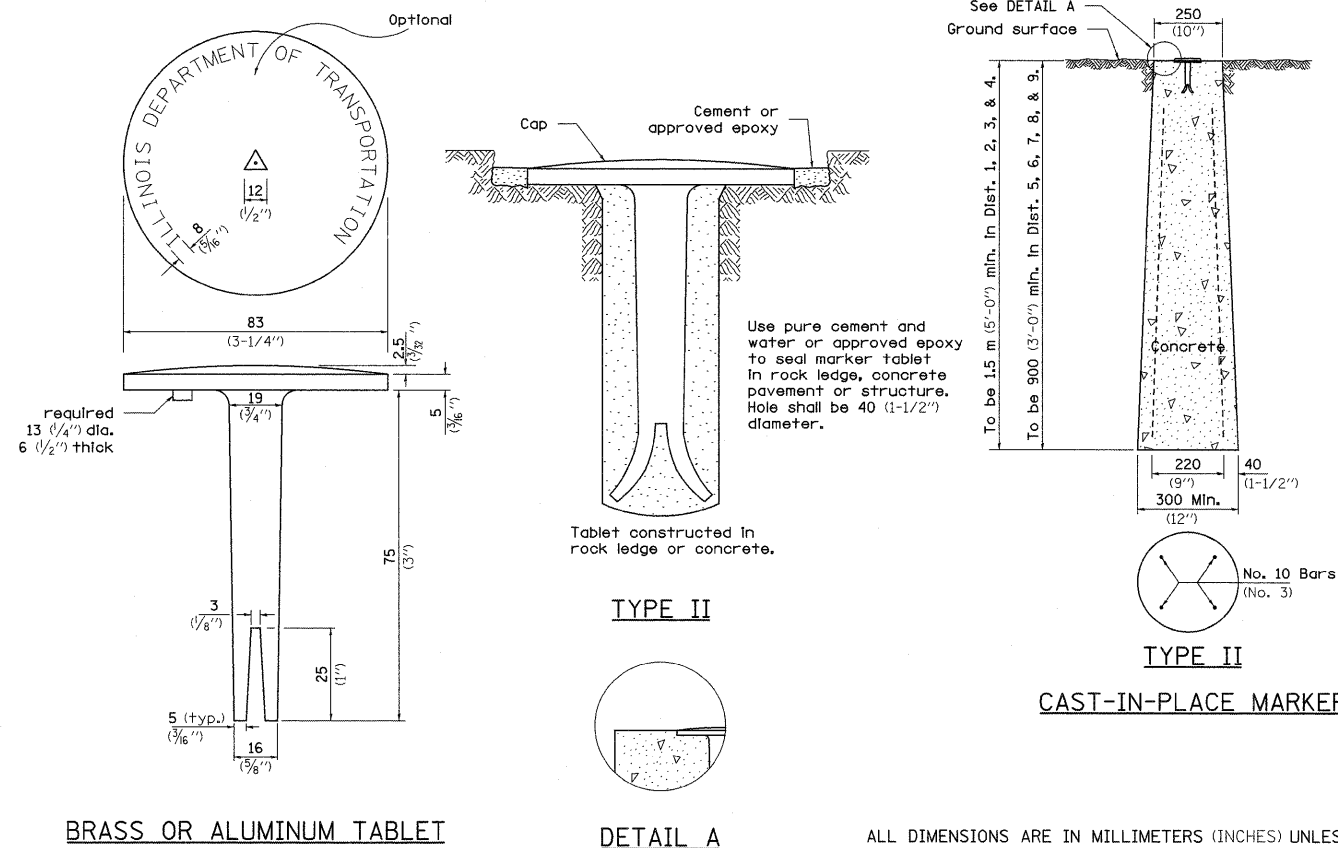


GENERAL NOTES

A WITNESS MARKER SHALL BE INSTALLED WITHIN 1' OF ALL PERMANENT SURVEY MARKERS TYPE II EXCEPT IN AREAS WHERE THE MARKER IS IN THE SIDEWALK. THIS WORK WILL BE INCLUDED TO THE CONTRACT UNIT PRICE PER EACH FOR PERMANENT SURVEY MARKERS, TYPE II.



PERMANENT SURVEY MARKERS, TYPE II



BRASS OR ALUMINUM TABLET

DETAIL A

CAST-IN-PLACE MARKER

Use pure cement and water or approved epoxy to seal marker tablet in rock ledge, concrete pavement or structure. Hole shall be 40 (1-1/2") diameter.

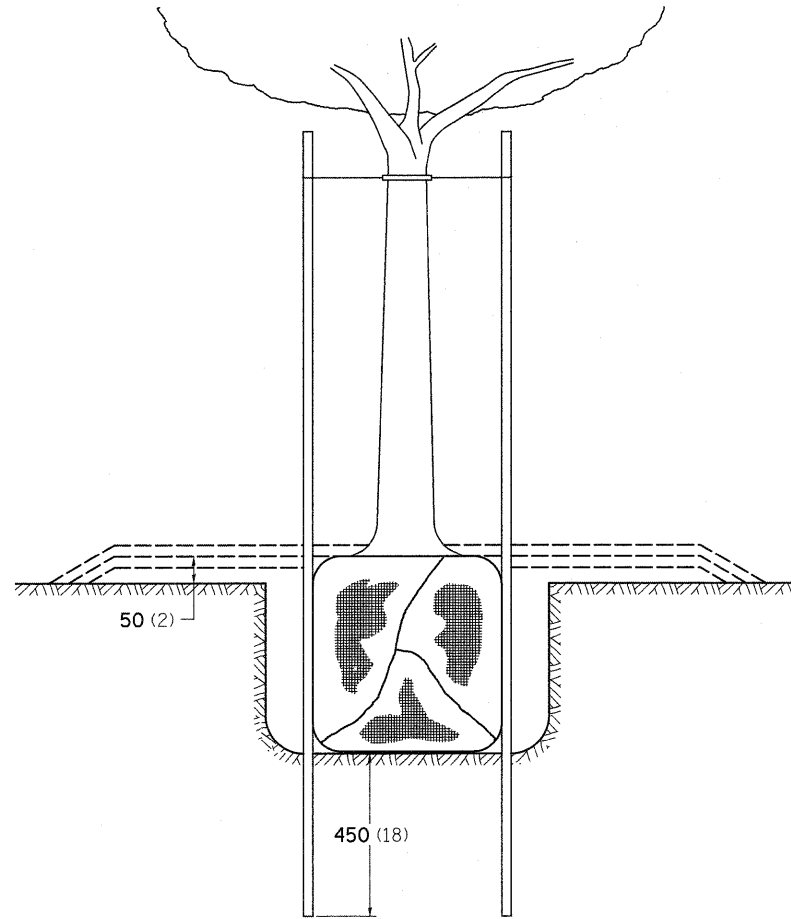
To be 1.5 m (5'-0") min. in Dist. 1, 2, 3, & 4.
 To be 900 (3'-0") min. in Dist. 5, 6, 7, 8, & 9.

No. 10 (No. 3) bars to be 150 (30") for 900 (36") min. & 11.1 m (3'-6") for 1.2 m (4'-0") min.

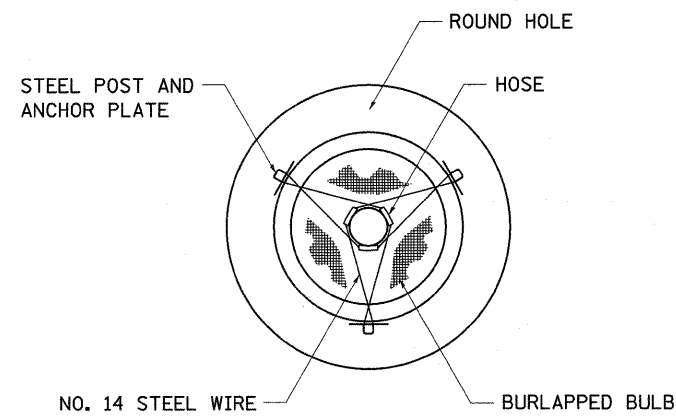
ALL DIMENSIONS ARE IN MILLIMETERS (INCHES) UNLESS OTHERWISE NOTED.

REVISED - 10-21-08	REGION 2 / DISTRICT 2 STANDARD			F.A.P. RTE. 742	SECTION 39M-2	COUNTY LEE	TOTAL SHEETS 25	SHEET NO. 17
REVISED -	SCALE: 20,000 / 1" SHEET NO. OF SHEETS STA. TO STA.			CONTRACT NO. 64D77		FED. ROAD DIST. NO. ILLINOIS FED. AID PROJECT		

DETAILS OF PLANTING AND BRACING TREES

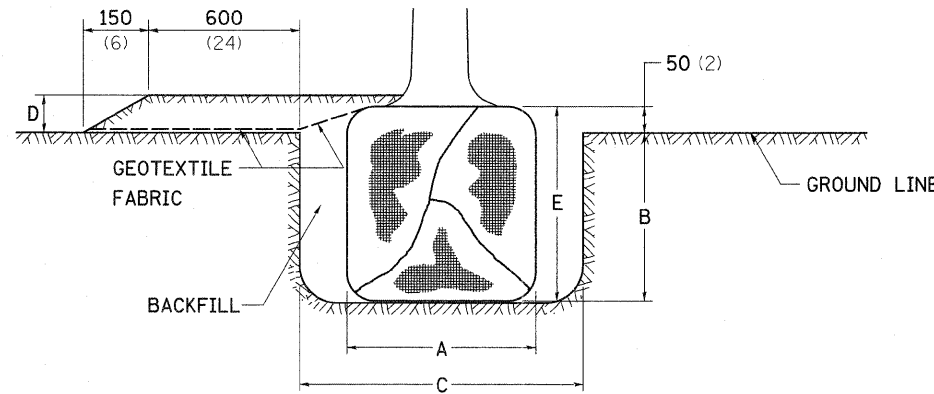


TREES SMALLER THAN 115 (4 1/2) IN DIAMETER

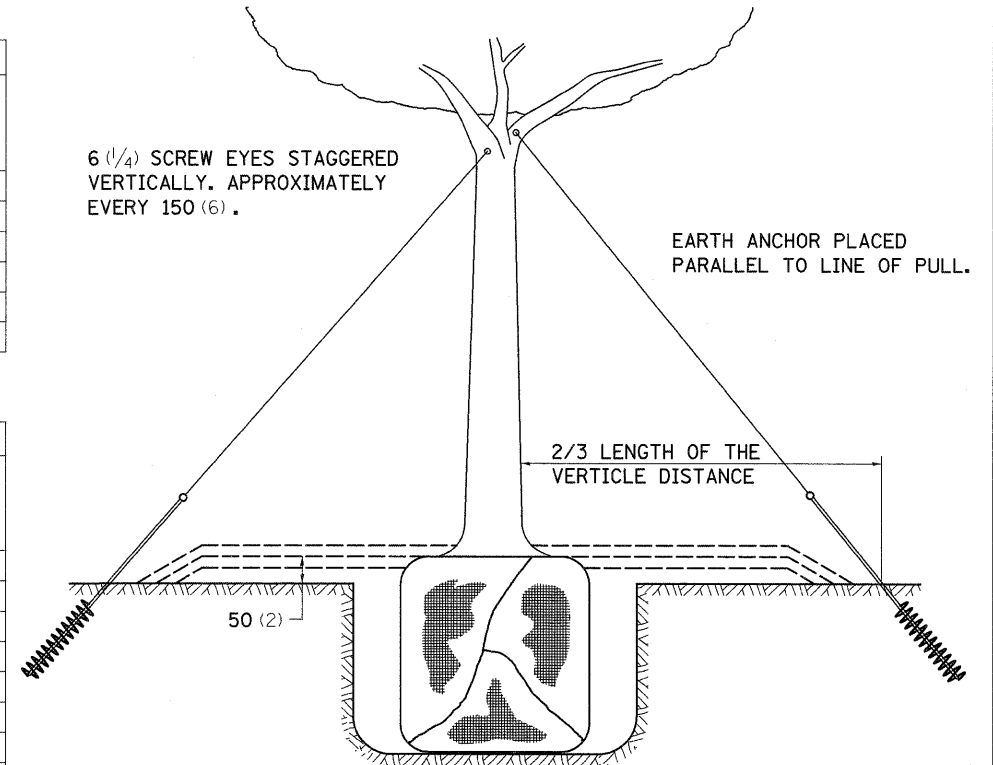


SMALL	A	B	C	D	E	F
TREE SIZE	DIAMETER OF BALL OR ROOT SYS.	DEPTH OF HOLE EXCAVATION	WIDTH OF HOLE EXCAVATION	THICKNESS OF MULCH COVER	DEPTH OF BALL OR ROOT SYS.	VOLUME OF MULCH COVER m ³ (CU. YDS.)
1.5-1.8m (5'-6')	400 (16)	250 (10)	750 (30)	100 (4)	300 (12)	0.41 (0.54)
1.5-1.8m (5'-6') BB	400 (16)	250 (10)	750 (30)	100 (4)	300 (12)	0.41 (0.54)
1.8-2.0m (6'-7') BB	450 (18)	300 (12)	750 (30)	100 (4)	350 (14)	0.41 (0.54)
2.0-2.4m (7'-8') BB	500 (20)	275 (11)	750 (30)	100 (4)	325 (13)	0.41 (0.54)
2.4-3.0m (8'-10') BB	600 (24)	350 (14)	900 (36)	100 (4)	400 (16)	0.47 (0.61)
3.0-3.6m (10'-12') BB	650 (26)	375 (15)	900 (36)	100 (4)	425 (17)	0.47 (0.61)

LARGE	A	B	C	D	E	F
TREE SIZE	DIAMETER OF BALL OR ROOT SYS.	DEPTH OF HOLE EXCAVATION	WIDTH OF HOLE EXCAVATION	THICKNESS OF MULCH COVER	DEPTH OF BALL OR ROOT SYS.	VOLUME OF MULCH COVER m ³ (CU. YDS.)
0-50 (0-2)	500 (20)	275 (11)	900 (36)	100 (4)	325 (13)	0.47 (0.61)
50-65 (2-2 1/2) BB	600 (24)	350 (14)	1200 (48)	100 (4)	400 (16)	0.60 (0.78)
65-75 (2 1/2-3) BB	700 (28)	425 (17)	1200 (48)	100 (4)	475 (19)	0.60 (0.78)
75-90 (3-3 1/2) BB	800 (32)	425 (17)	1500 (60)	100 (4)	475 (19)	0.73 (0.96)
90-100 (3 1/2-4) BB	900 (36)	500 (20)	1500 (60)	100 (4)	550 (22)	0.73 (0.96)
100-115 (4-4 1/2) BB	1000 (40)	550 (22)	1800 (72)	100 (4)	600 (24)	0.89 (1.16)
115-125 (4 1/2-5) BB	1100 (44)	600 (24)	1800 (72)	100 (4)	650 (26)	0.89 (1.16)
125-140 (5-5 1/2) BB	1200 (48)	675 (27)	2100 (84)	100 (4)	725 (29)	1.06 (1.38)



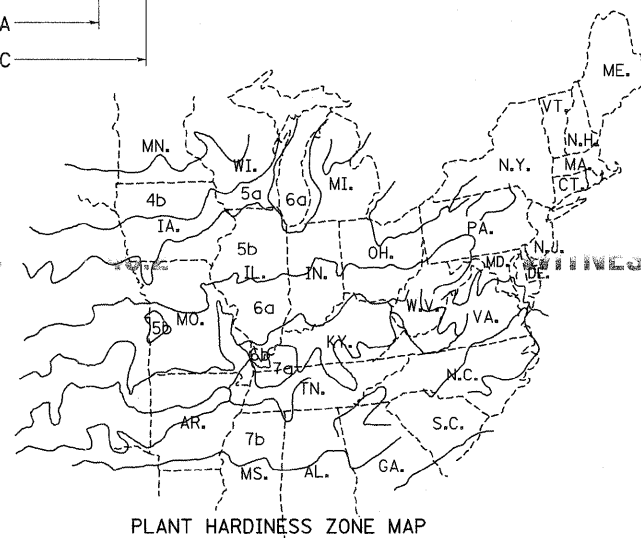
TREES OVER 115 (4 1/2) IN DIAMETER



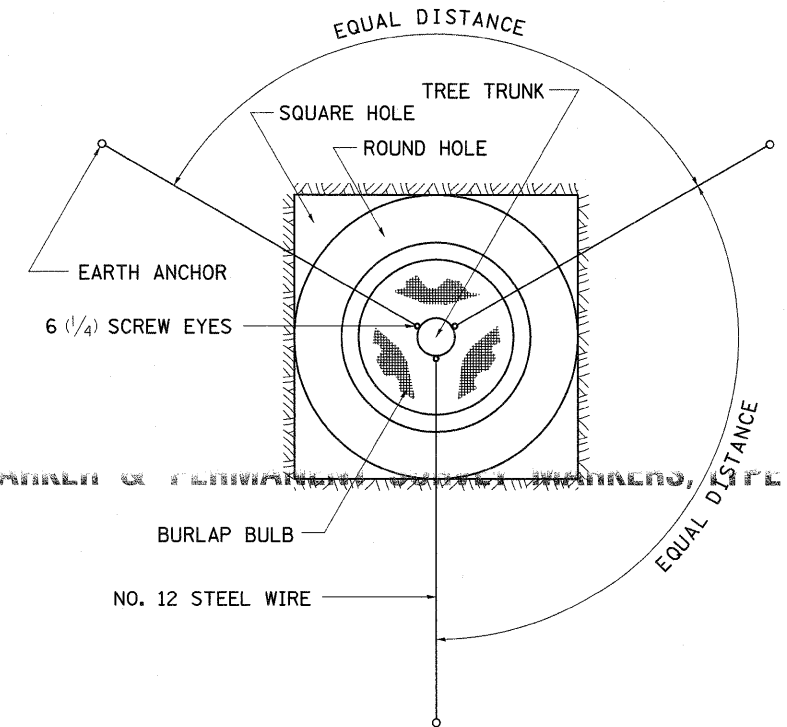
6 (1/4) SCREW EYES STAGGERED VERTICALLY. APPROXIMATELY EVERY 150 (6).

EARTH ANCHOR PLACED PARALLEL TO LINE OF PULL.

2/3 LENGTH OF THE VERTICLE DISTANCE



PLANT HARDINESS ZONE MAP
U.S. DEPARTMENT OF AGRICULTURE
AGRICULTURAL RESEARCH SERVICE
PUBLICATION NO. 814

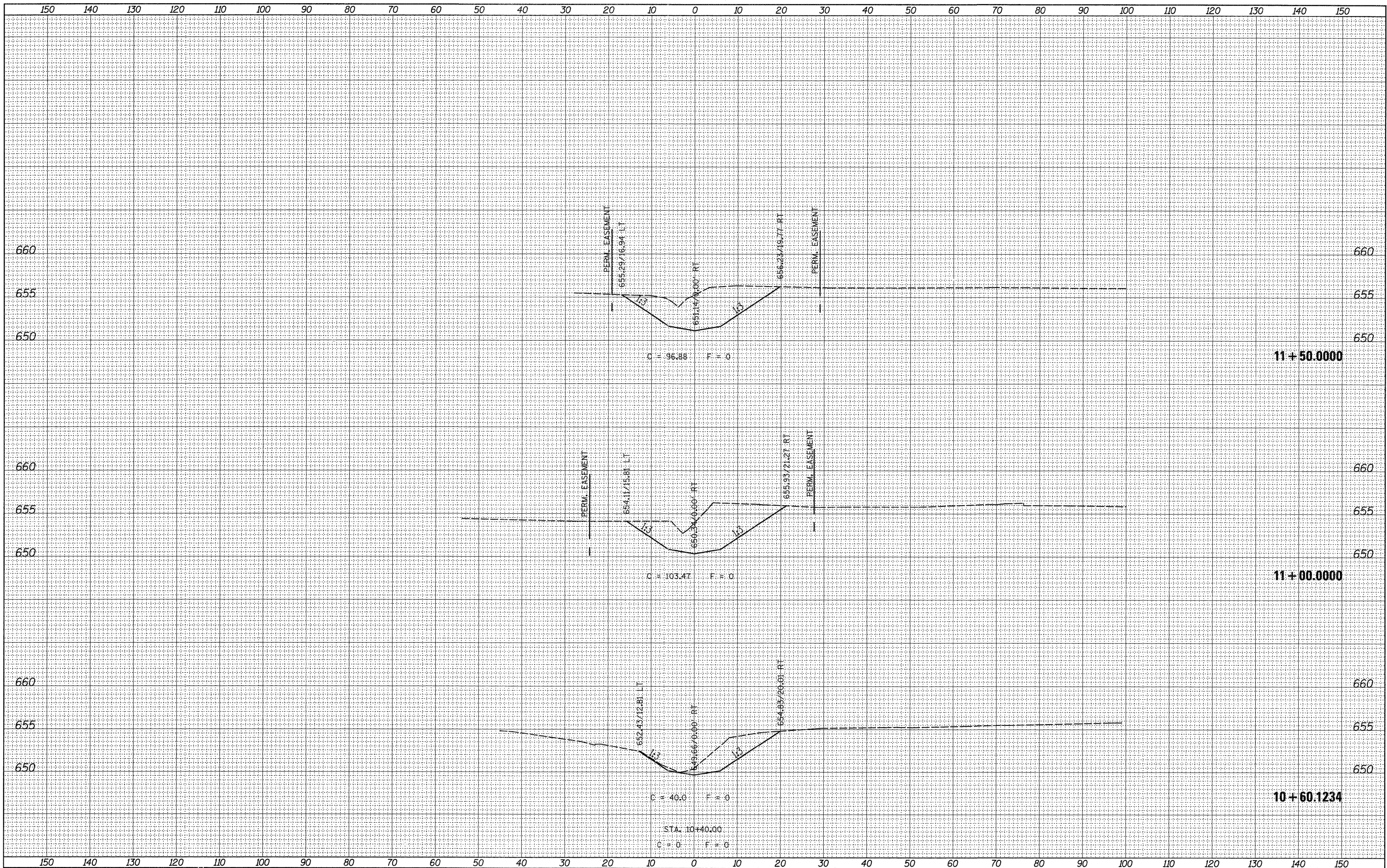


ALL DIMENSIONS ARE IN MILLIMETERS (INCHES) UNLESS OTHERWISE NOTED.

FILE NAME =	USER NAME = ankneyde	DESIGNED -	REVISED - 10-15-04	STATE OF ILLINOIS DEPARTMENT OF TRANSPORTATION	REGION 2 / DISTRICT 2 STANDARD	F.A.P. RTE. 742	SECTION 39M-2	COUNTY LEE	TOTAL SHEETS 25	SHEET NO. 18
cs:\pw_work\pw\dot\ankneyde\d0130575\0212807-shit-plnprf.dgn	PLLOT SCALE = 28.0000' / 1in.	DRAWN -	REVISED -			SCALE:	SHEET NO. OF SHEETS STA. TO STA.	CONTRACT NO.		FED. ROAD DIST. NO. ILLINOIS FED. AID PROJECT
	PLLOT DATE = Wed Dec 07 13:32:03 2011	CHECKED -	REVISED -							

FINAL SURVEY	SURVEYED	BY	DATE
NOTE BOOK NO.	PLOTTED		
	TEMPLATE		
	AREAS CHECKED		

ORIGINAL SURVEY	SURVEYED	BY	DATE
NOTE BOOK NO.	PLOTTED		
	TEMPLATE		
	AREAS CHECKED		



FILE NAME =
 c:\pwwork\pwwork\ankneyde\d0130551\012807-xsc.mxd

USER NAME = ankneyde
 DESIGNED -
 DRAWN -
 CHECKED -
 DATE -

REVISIONS:
 REVISED -
 REVISED -
 REVISED -
 REVISED -

**STATE OF ILLINOIS
 DEPARTMENT OF TRANSPORTATION**

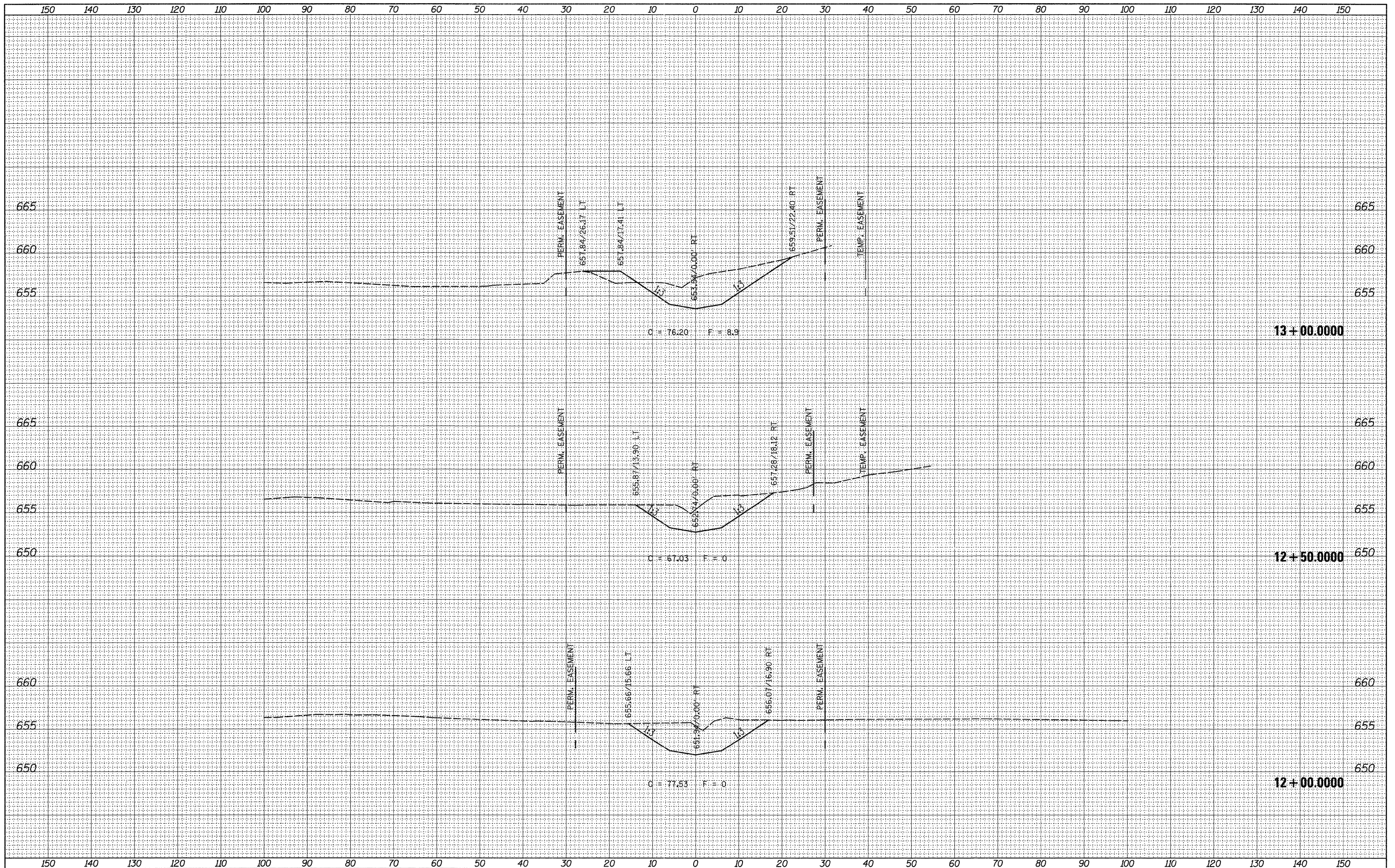
CROSS SECTIONS

SCALE: SHEET NO. OF SHEETS STA. 10+60.1234 TO STA. 11+50.0000

F.A.P. RTE. 742	SECTION 39M-2	COUNTY LEE	TOTAL SHEETS 25	SHEET NO. 19
CONTRACT NO. 64D77				
ILLINOIS FED. AID PROJECT				

FINAL SURVEY	SURVEYED	BY	DATE
NOTE BOOK	TEMPLATE		
NO.	AREAS CHECKED		

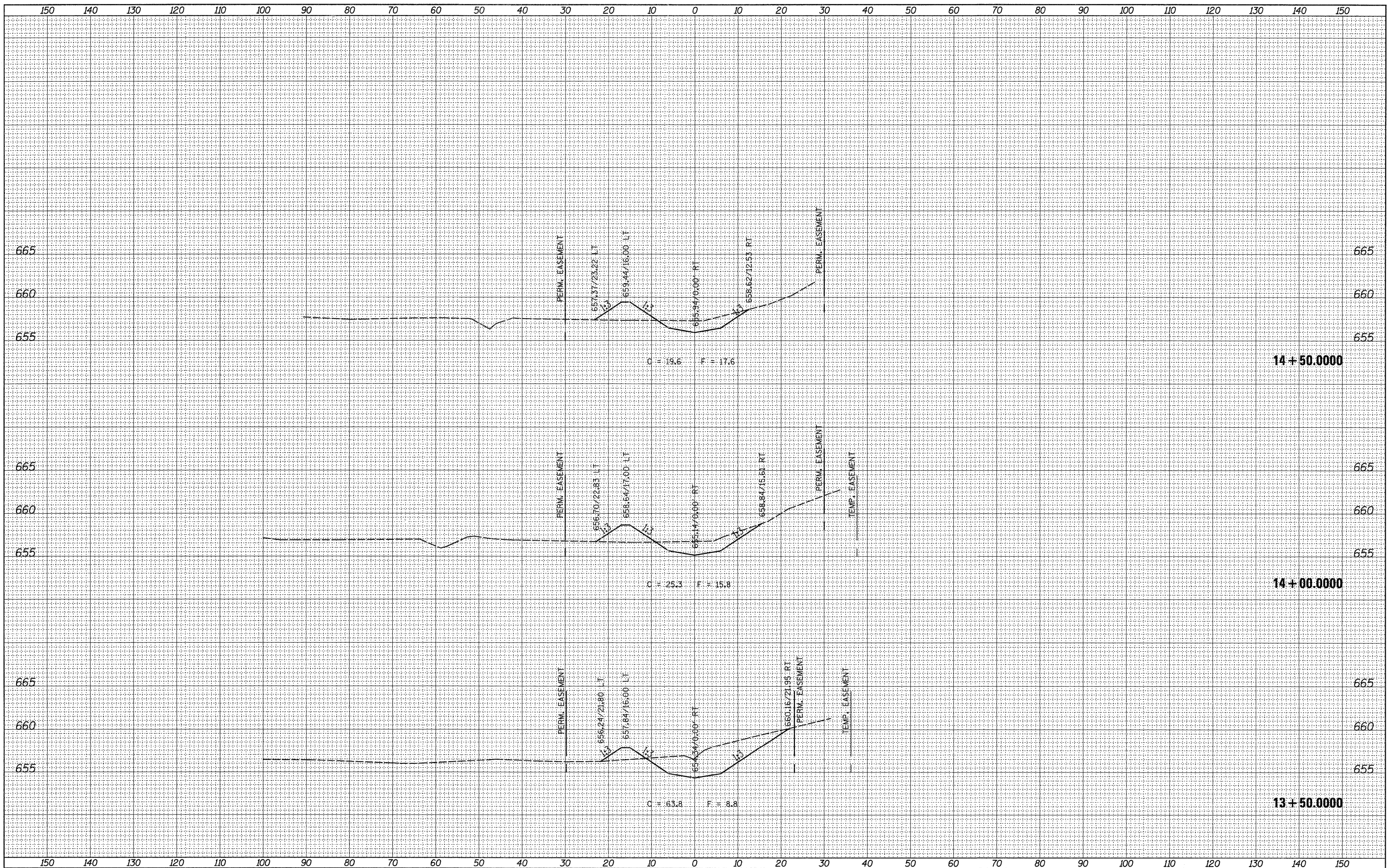
ORIGINAL SURVEY	SURVEYED	BY	DATE
NOTE BOOK	TEMPLATE		
NO.	AREAS CHECKED		



FILE NAME =	USER NAME = ankneyde	DESIGNED -	REVISED -	STATE OF ILLINOIS DEPARTMENT OF TRANSPORTATION	CROSS SECTIONS	F.A.P. RTE.	SECTION	COUNTY	TOTAL SHEETS	SHEET NO.
c:\pw_work\pw\dot\ankneyde\d013055\1\12887-xsc.mxd	DRAWN -	REVISED -	742			39M-2	LEE	25	20	
PLOT SCALE = 18,00000' / 1"	CHECKED -	REVISED -	CONTRACT NO. 64D77							
PLOT DATE = Wed Dec 07 13:40:28 2011	DATE -	REVISED -	ILLINOIS FED. AID PROJECT							
SCALE: SHEET NO. OF SHEETS STA. 12+00.0000 TO STA. 13+00.0000										

BY	DATE
SURVEYED	
PLOTTED	
NOTE BOOK	
AREAS CHECKED	

BY	DATE
SURVEYED	
PLOTTED	
NOTE BOOK	
AREAS CHECKED	



FILE NAME =
 c:\pw_work\pwidot\ankneyde\d0130551\012807-xsc.mxd

USER NAME = ankneyde
 DESIGNED -
 DRAWN -
 CHECKED -
 PLOT SCALE = 10.0000' / 1" /
 PLOT DATE = Wed Dec 07 13:40:29 2011

DESIGNED -
 DRAWN -
 CHECKED -
 DATE -

REVISED -
 REVISED -
 REVISED -
 REVISED -

**STATE OF ILLINOIS
 DEPARTMENT OF TRANSPORTATION**

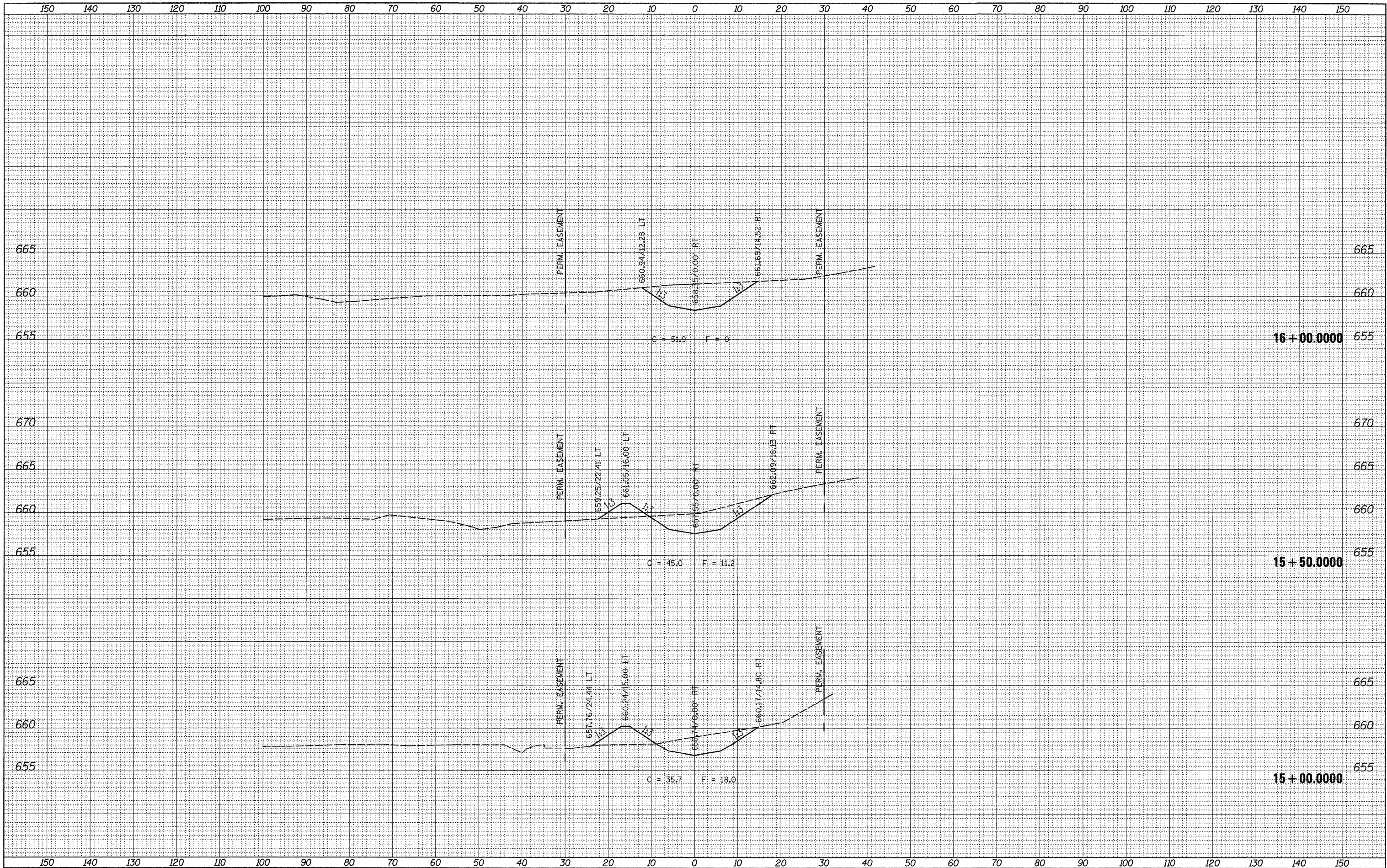
CROSS SECTIONS

SCALE: SHEET NO. OF SHEETS STA. 13+50.0000 TO STA. 14+50.0000

F.A.P. RTE. 742	SECTION 39M-2	COUNTY LEE	TOTAL SHEETS 25	SHEET NO. 21
CONTRACT NO. 64D77				
ILLINOIS FED. AID PROJECT				

DATE	
BY	
FINAL SURVEY	
SURVEYED	
PLOTTED	
NOTE BOOK	
TEMPLATE	
AREAS CHECKED	
NO.	

DATE	
BY	
ORIGINAL SURVEY	
SURVEYED	
PLOTTED	
NOTE BOOK	
TEMPLATE	
AREAS CHECKED	
NO.	



FILE NAME =
 c:\p\work\p\p\dot\ankneyde\0130551\012807-xac.mxd

USER NAME = ankneyde
 DESIGNED -
 DRAWN -
 CHECKED -
 DATE -

DESIGNED -
 DRAWN -
 CHECKED -
 DATE -

REVISED -
 REVISED -
 REVISED -
 REVISED -

**STATE OF ILLINOIS
 DEPARTMENT OF TRANSPORTATION**

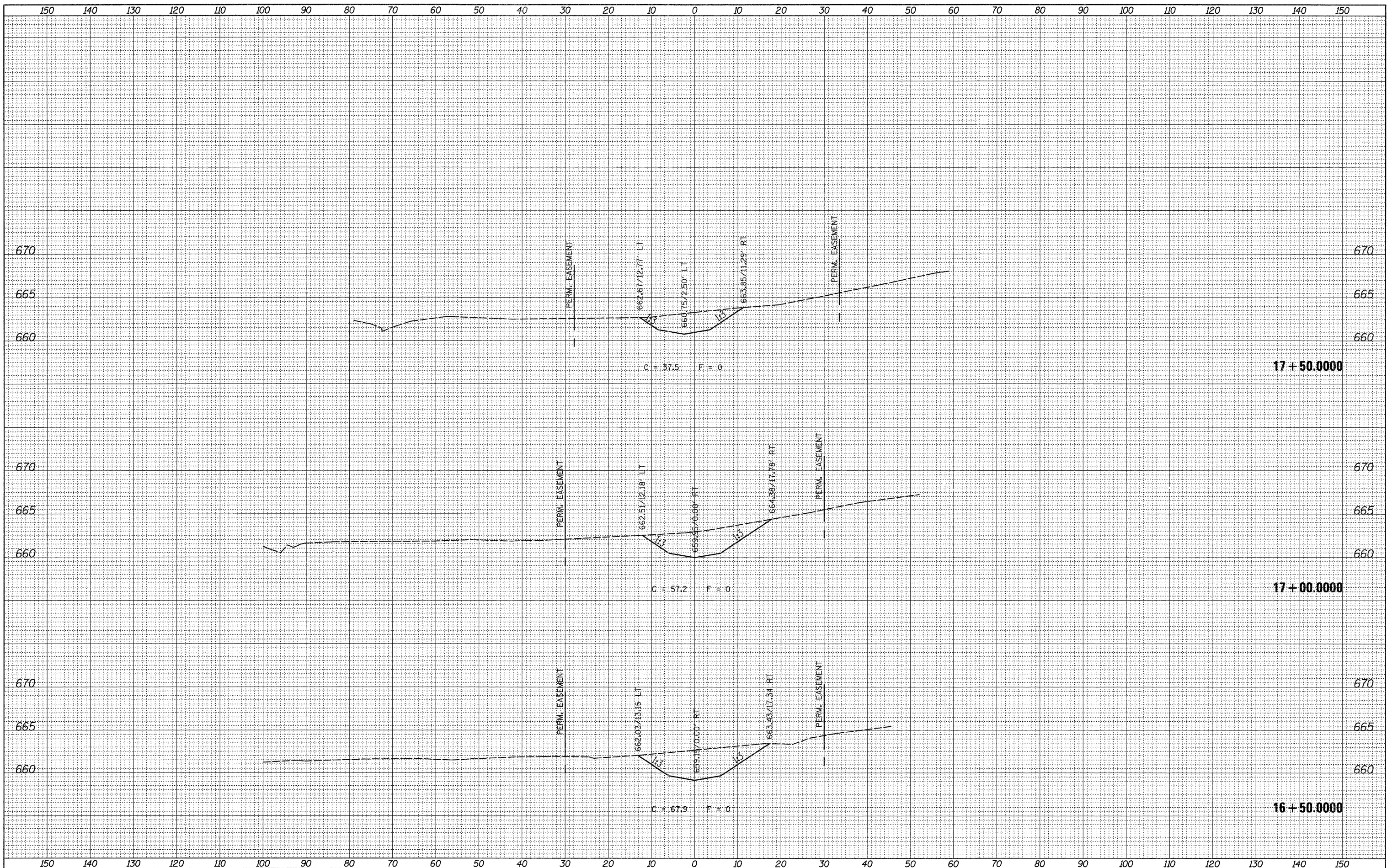
CROSS SECTIONS

SCALE: SHEET NO. OF SHEETS STA. 15+00.0000 TO STA. 16+00.0000

F.A.P. RTE.	SECTION	COUNTY	TOTAL SHEETS	SHEET NO.
742	39M-2	LEE	25	22
CONTRACT NO. 64D77				
ILLINOIS FED. AID PROJECT				

FINAL SURVEY	SURVEYED	BY	DATE
NOTE BOOK	PLOTTED		
NO.	TEMPLATE		
	AREAS CHECKED		

ORIGINAL SURVEY	SURVEYED	BY	DATE
NOTE BOOK	PLOTTED		
NO.	TEMPLATE		
	AREAS CHECKED		



FILE NAME =
 c:\pw_work\p\ridot\ankneyde\d0130551\012807-xso.mldgn

USER NAME = ankneyde
 DESIGNED -
 DRAWN -
 CHECKED -
 DATE -

REVISED -
 REVISED -
 REVISED -
 REVISED -

**STATE OF ILLINOIS
 DEPARTMENT OF TRANSPORTATION**

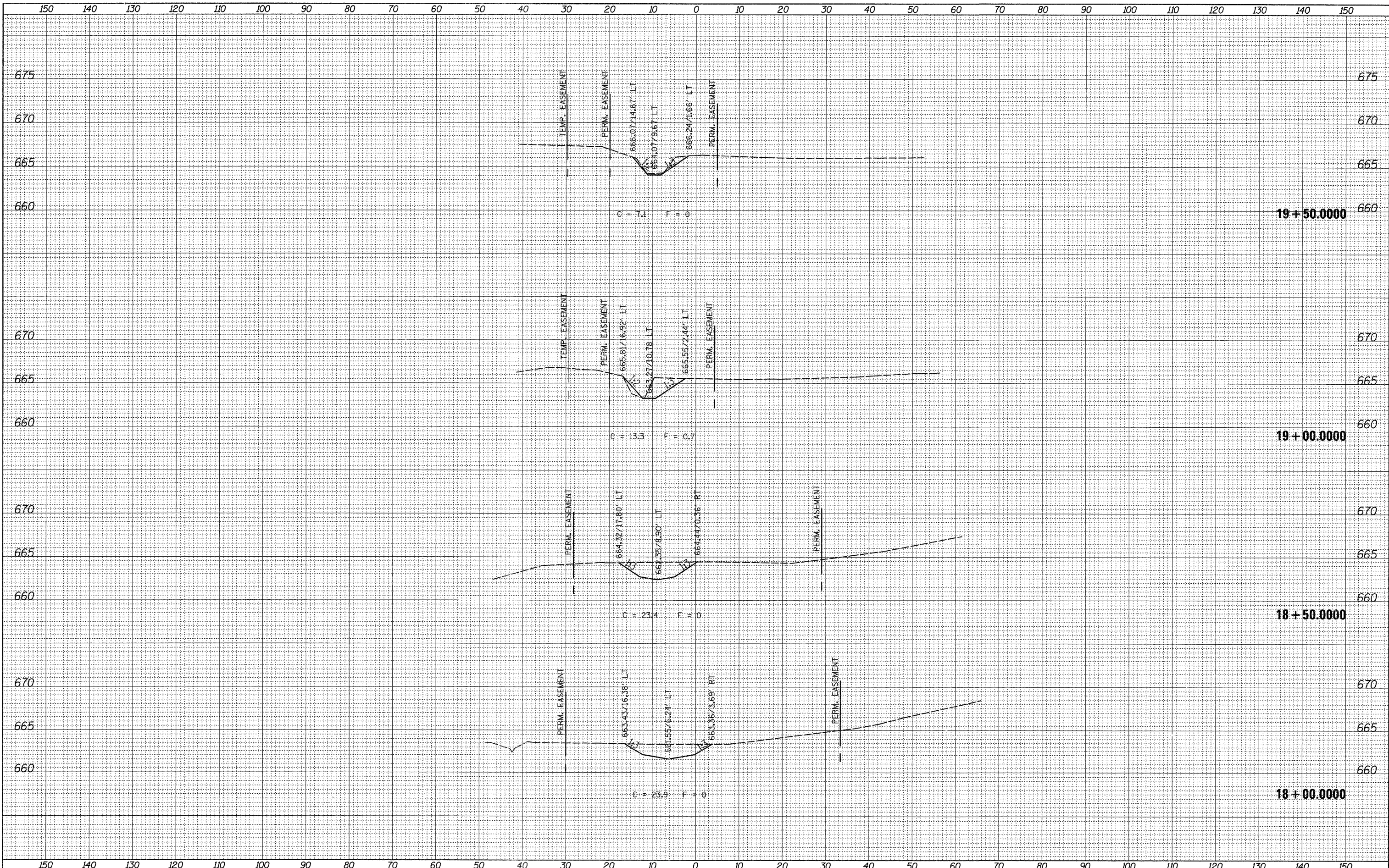
CROSS SECTIONS

SCALE: SHEET NO. OF SHEETS STA. 16+50.0000 TO STA. 17+50.0000

F.A.P. RTE. 742	SECTION 39M-2	COUNTY LEE	TOTAL SHEETS 25	SHEET NO. 23
CONTRACT NO. 64D77				
ILLINOIS FED. AID PROJECT				

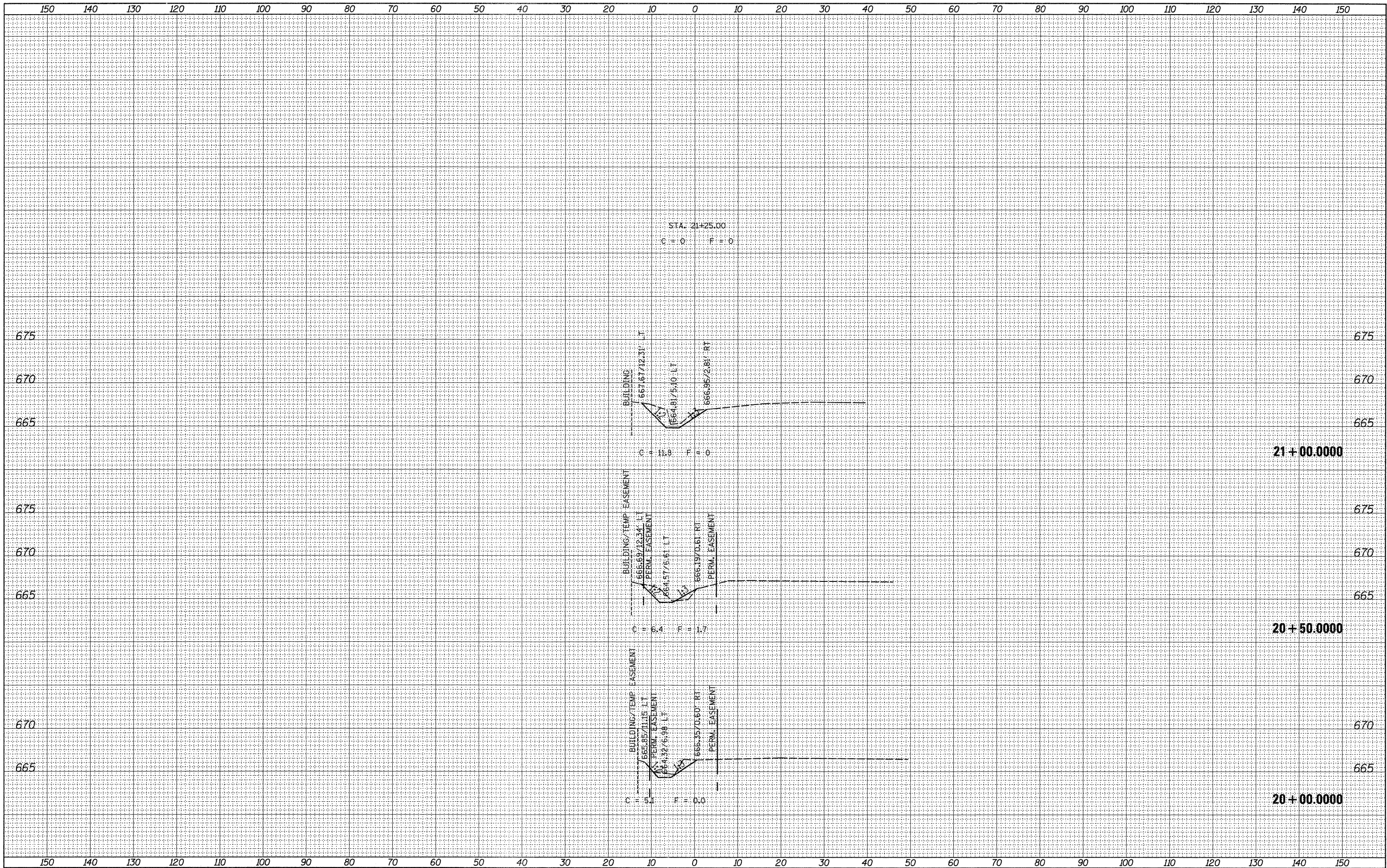
DATE	BY
SURVEYED	PLOTTED
NOTE BOOK	TEMPLATE
NO.	AREAS CHECKED

DATE	BY
SURVEYED	PLOTTED
NOTE BOOK	TEMPLATE
NO.	AREAS CHECKED



FINAL SURVEY	SURVEYED	BY	DATE
NO.	PLOTTED		
	TEMPLATE		
	AREAS CHECKED		

ORIGINAL SURVEY	SURVEYED	BY	DATE
NO.	PLOTTED		
	TEMPLATE		
	AREAS CHECKED		



FILE NAME =
 c:\pw_work\prj\ankneyde\0130551\012807-xac.mxd

USER NAME = ankneyde
 DESIGNED -
 DRAWN -
 PLOT SCALE = 10.0000' / 1" =
 PLOT DATE = Wed Dec 07 13:48:33 2011

DESIGNED -
 DRAWN -
 CHECKED -
 DATE -

REVISED -
 REVISED -
 REVISED -
 REVISED -

**STATE OF ILLINOIS
 DEPARTMENT OF TRANSPORTATION**

CROSS SECTIONS

SCALE: SHEET NO. OF SHEETS STA. 20+00.0000 TO STA. 21+00.0000

F.A.P. RTE.	SECTION	COUNTY	TOTAL SHEETS	SHEET NO.
742	39M-2	LEE	25	25
CONTRACT NO. 64D77				
ILLINOIS FED. AID PROJECT				