

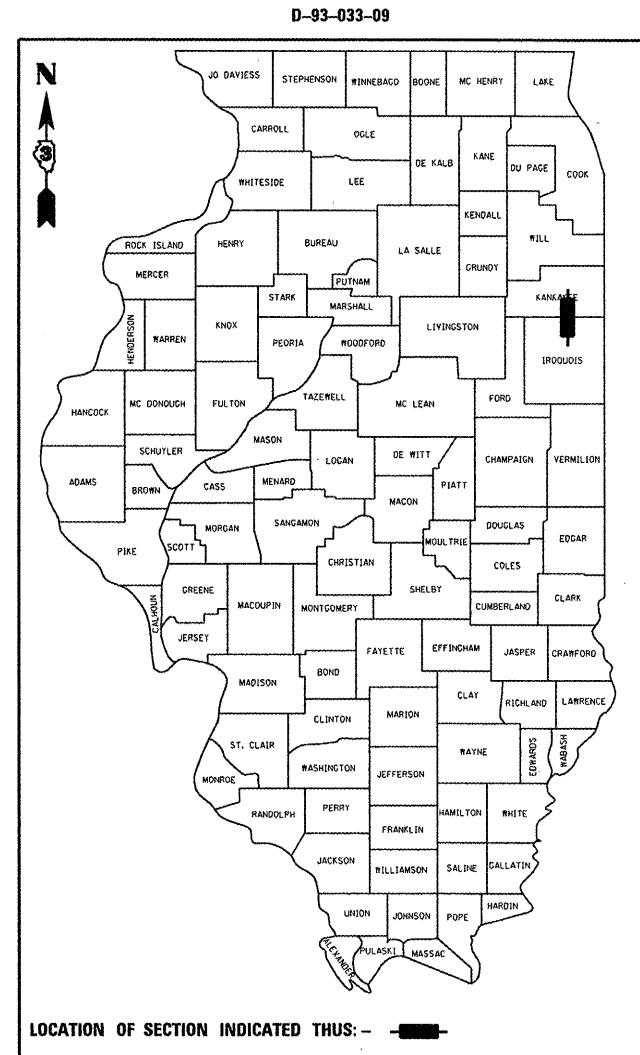
F.A.P. RTE.	SECTION	COUNTY	TOTAL SHEETS	SHEET NO.
332	(4,5,H,K,C-1)RS-4		20	1
KANKAKEE & IROQUOIS ILLINOIS			CONTRACT NO. 66921	

STATE OF ILLINOIS
DEPARTMENT OF TRANSPORTATION
DIVISION OF HIGHWAYS

PROPOSED
HIGHWAY PLANS

FAP 332 (IL 1)
SECTION (4,5,H,K,C-1)RS-4
PROJECT: ACNHF-0332(10B)
3P RESURFACING
KANKAKEE & IROQUOIS COUNTIES

C-93-056-09
MILLING & RESURFACING FROM
NCL OF ST ANNE TO JUST NORTH OF US 52



LOCATION OF SECTION INDICATED THUS: - [black bar] -

OTHER PRINCIPAL ARTERIAL
2009 ADT = 3,000
P.V. = 85%
S.U. = 7%
M.U. = 8%

STATE OF ILLINOIS
DEPARTMENT OF TRANSPORTATION
DIVISION OF HIGHWAYS

SUBMITTED 12-12 20 11
Eric S. Therkelsen
DEPUTY DIRECTOR OF HIGHWAYS, REGION ENGINEER

Feb 3 20 12
John D. Baranzelli, P.E.
acting ENGINEER OF DESIGN AND ENVIRONMENT

Feb 3 20 12
William R. Fleury
acting DIRECTOR OF HIGHWAYS, CHIEF ENGINEER

PRINTED BY THE AUTHORITY
OF THE STATE OF ILLINOIS

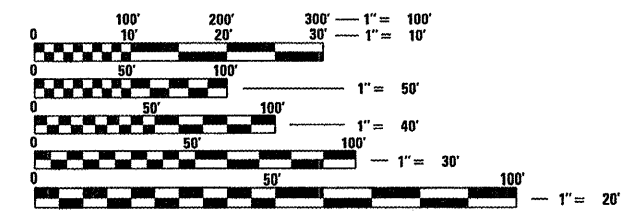
INDEX OF SHEETS

- 1 COVER SHEET
- 2 GENERAL NOTES
- 3-6 SUMMARY OF QUANTITIES
- 7 TYPICAL SECTIONS
- 8-11 SCHEDULES
- 12 TIE POINTS
- 13-14 PROJECT LAYOUT
- 15-18 PAVEMENT MARKING DETAILS
- 19-20 MISCELLANEOUS DETAILS

STANDARDS

- 000001-06 STANDARD SYMBOLS, ABBREVIATIONS AND PATTERNS
- 001006 DECIMAL OF AN INCH AND OF A FOOT
- 406201-01 MAILBOX TURNOUT
- 424001-06 PERPENDICULAR CURB RAMPS FOR SIDEWALKS
- 424006 DIAGONAL CURB RAMPS FOR SIDEWALKS
- 424011 CORNER PARALLEL CURB RAMPS FOR SIDEWALKS
- 424016 MID-BLOCK CURB RAMPS FOR SIDEWALKS
- 424021 DEPRESSED CORNER FOR SIDEWALKS
- 424026 ENTRANCE / ALLEY PEDESTRIAN CROSSINGS
- 442201-03 CLASS C AND D PATCHES
- 606001-04 CONCRETE CURB TYPE B AND COMBINATION CONCRETE CURB AND GUTTER
- 667101-01 PERMANENT SURVEY MARKERS
- 701001-02 OFF-ROAD OPERATIONS 2L, 2W, MORE THAN 15' (4.5 m) AWAY
- 701006-03 OFF-ROAD OPERATIONS 2L, 2W, 15' (4.5 m) TO 24" (600 mm) FROM PAVEMENT EDGE
- 701201-04 LANE CLOSURE, 2L, 2W, DAY ONLY, FOR SPEEDS ≥ 45 MPH
- 701301-04 LANE CLOSURE, 2L, 2W, SHORT TIME OPERATIONS
- 701306-03 LANE CLOSURE, 2L, 2W, SLOW MOVING OPERATIONS DAY ONLY, FOR SPEEDS ≥ 45 MPH
- 701311-03 LANE CLOSURE, 2L, 2W, MOVING OPERATIONS - DAY ONLY
- 701501-06 URBAN LANE CLOSURE, 2L, 2W, UNDIVIDED
- 701901-02 TRAFFIC CONTROL DEVICES
- 780001-03 TYPICAL PAVEMENT MARKINGS
- 781001-03 TYPICAL APPLICATIONS RAISED REFLECTIVE PAVEMENT MARKERS
- 782001 PRISMATIC CURB REFLECTORS

701801-05



FULL SIZE PLANS HAVE BEEN PREPARED USING STANDARD ENGINEERING SCALES. REDUCED SIZED PLANS WILL NOT CONFORM TO STANDARD SCALES. IN MAKING MEASUREMENTS ON REDUCED PLANS, THE ABOVE SCALES MAY BE USED.

J.U.L.I.E.
JOINT UTILITY LOCATION INFORMATION FOR EXCAVATION
1-800-892-0123
OR 811

DISTRICT 3 NO. (815) 434-6131
PROJECT ENGINEER: JOE KANNEL, P.E.
UNIT CHIEF: GREGG PRAIRIE /MICHELE LINDEMANN, P.E.

CONTRACT NO. 66921

STATION EQUATION
STA 393 + 25 BK =
STA 387 + 42 AH

BEGIN PROJECT
STA 352 + 33

SN 038-2004
STA 483 + 27

SN 038-0017
STA 518 + 58

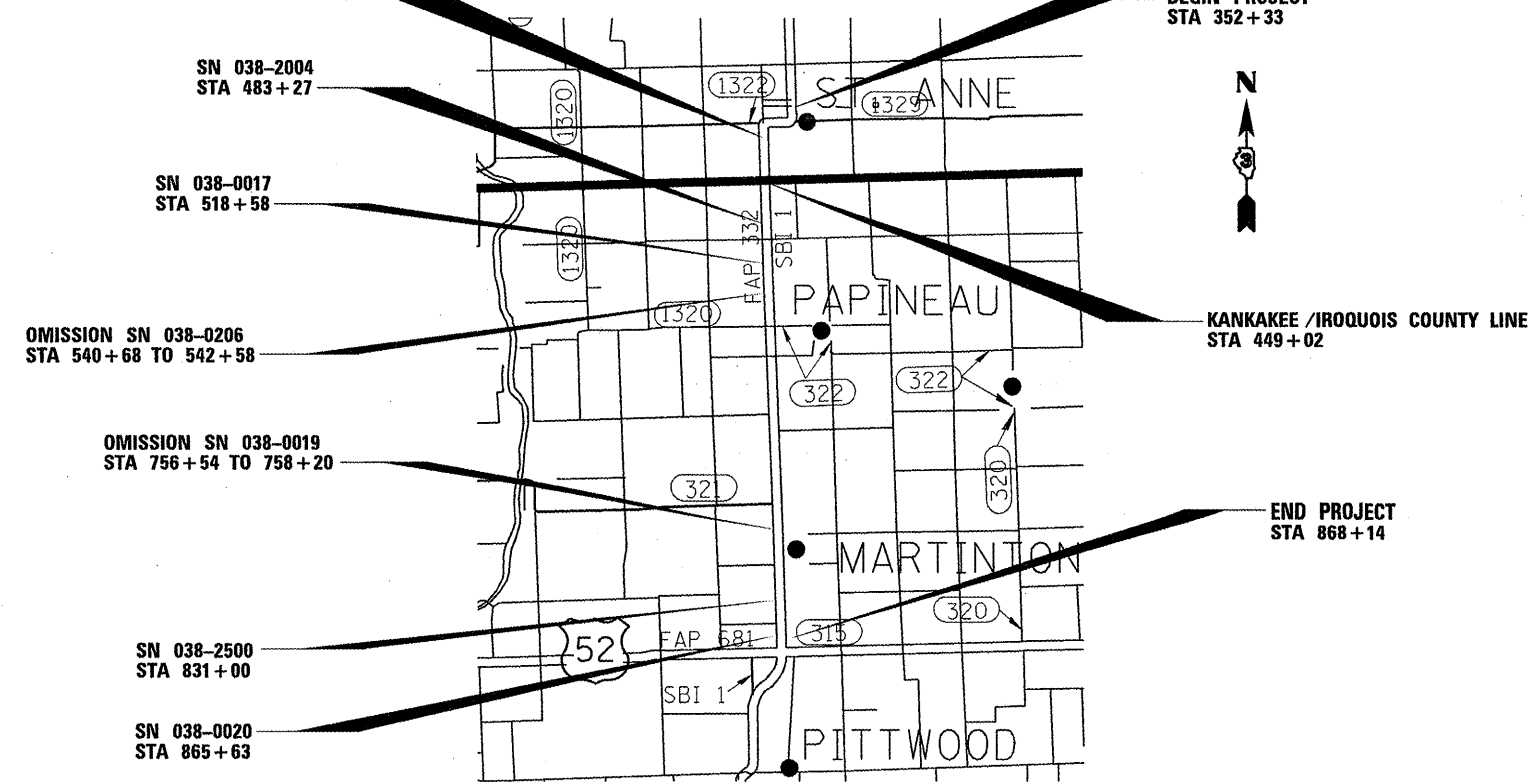
OMISSION SN 038-0206
STA 540 + 68 TO 542 + 58

OMISSION SN 038-0019
STA 756 + 54 TO 758 + 20

SN 038-2500
STA 831 + 00

SN 038-0020
STA 865 + 63

END PROJECT
STA 868 + 14



GROSS LENGTH = 52164 FT. = 9.880 MILE
NET LENGTH = 51808 FT. = 9.812 MILE